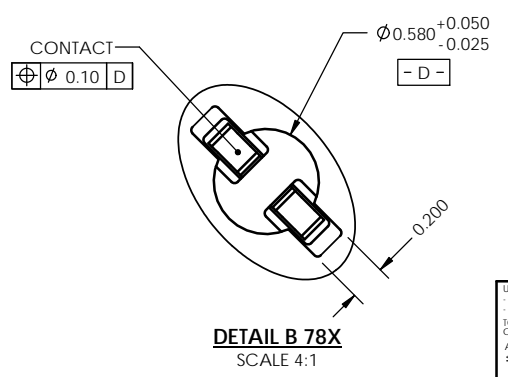
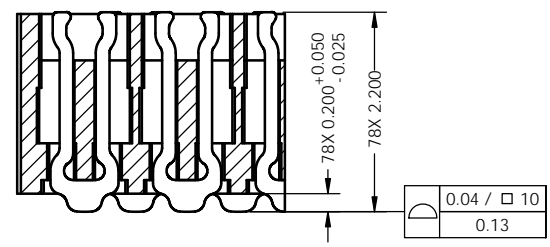
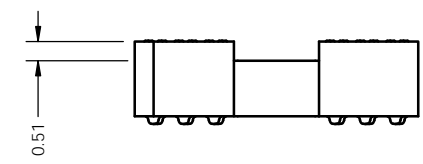
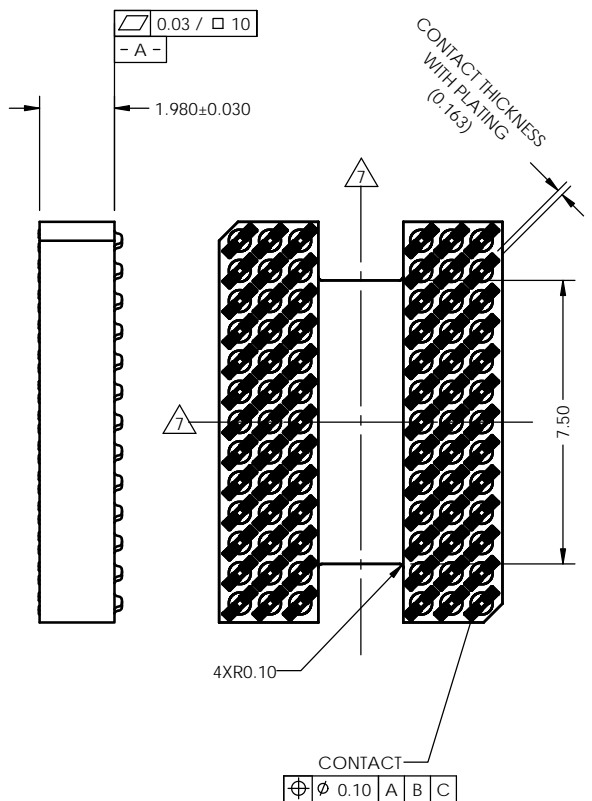
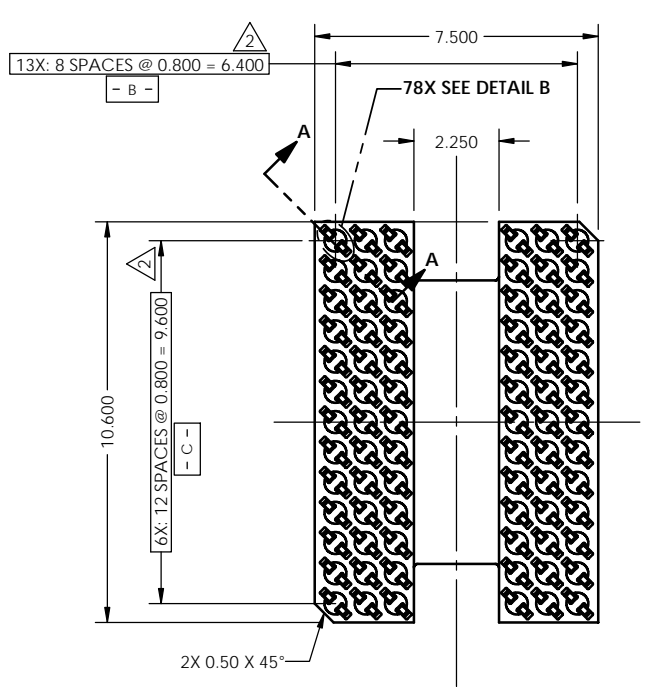


REV	ECO	BY	DESCRIPTION	APV	DATE
A	30406	EJT	Initial Design	MP	06/10/10
B	31156	WB	Updated to current standard	KW	08/13/12



Notes:

- Footprint part number is 104311-0233.
- Dimension locates center of contact.
- Press size is 7.50 X 10.60.
- Unless otherwise noted, all features located $\oplus 0.10$ A B C
- Reference R&D Interconnect Solutions specification 103862-0001 for Application notes.
- Datums -B- and -C- are determined by $\phi 0.580$ opening in corner slots.
- E- center of contact pattern.

PARTS LIST			
Item	Qty	Part Number	Description
-	-	107022-0038	SCKT, 78GRY7.5X10.6-0.80
1	1	105528-0073	CS, 78GRY7.5X10.6-0.80
-	-	103864-0119	PRESS, DEV INS, 7.5X10.6 (SOLD SEP.)
-	-	107030-0038	STEN,FLEX, 78GRY7.5X10.6-0.80 (SOLD SEP.)
-	-	105900-0004	EXTRACTION TOOL, 4 X 53 (SOLD SEP.)

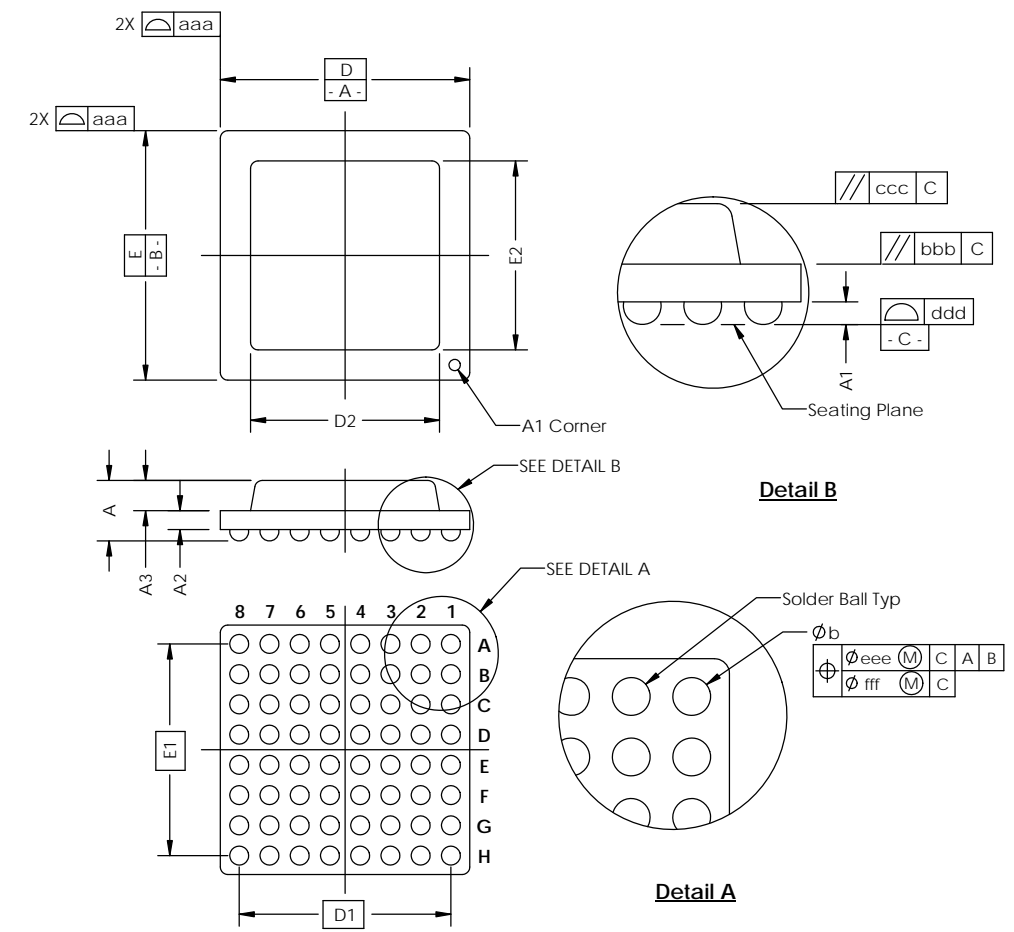
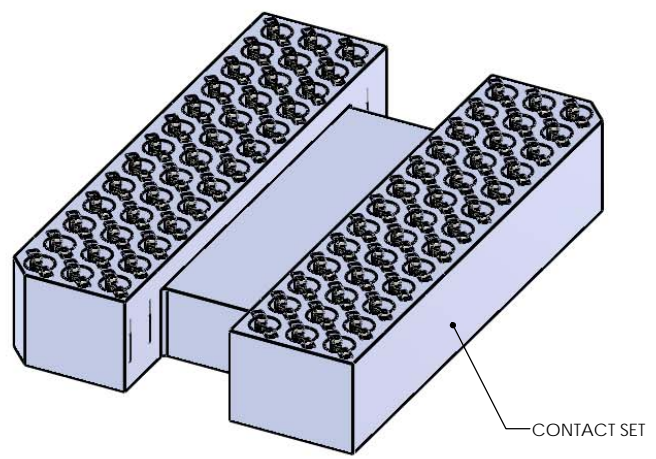
UNLESS OTHERWISE SPECIFIED DIMENSIONS ARE IN MILLIMETERS DIMS APPLY AFTER PLATING TOLERANCES UNLESS OTHERWISE NOTED:		THE INFORMATION CONTAINED IN THIS DRAWING IS THE SOLE PROPERTY OF R&D INTERCONNECT SOLUTIONS. ANY REPRODUCTION IN PART OR WHOLE WITHOUT THE WRITTEN PERMISSION OF R&D INTERCONNECT SOLUTIONS IS PROHIBITED.	
CAD GENERATED DRAWING DO NOT MANUALLY UPDATE		7115 NORTHLAND TERRACE SUITE 400 BROOKLYN PARK, MN 55428 (763) 509-0066	
DRAWING APPROVALS		R&D Interconnect Solutions	
NAME	DATE	SCKT, 78GRY7.5X10.6-0.80, DS	
E.Turin	06/08/10		
APPROV	DATE	C CUSTOMER SOLIDWORKS DRAWING NO. 107022-0038 REV. B	
M. Peery	06/10/10		
THIRD ANGLE PROJECTION		SCALE	NATURAL
SEE BOM		SHEET 1 of 2	

LEGEND:

- NOTE CALLOUT
- REVISION CHANGE
- ITEM NUMBER

SOCKET FOR DEVICES THAT ARE WITHIN THESE SPECIFICATIONS					
Lead Count	N	78	Package Size	D	7.50
Columns	ND	6		E	10.60
Rows	NE	13	Ball Spacing	D1	6.40
Pitch	e	0.80		E1	9.60
Ball Size	b	0.45±0.05	Encapsulant/ Top Size	D2	n/a
Total Thickness	A	N/A		E2	n/a
Ball Height	A1	0.275 Min	Pattern Style	Irregular*	
Substrate Thickness	A2	N/A	Perimeter Rows	n/a	
Top Thickness	A3	N/A	Center Array	n/a	
Form Tolerances					
Edge	aaa	0.20	Bottom	ddd	0.15
Substrate	bbb	0.20	Position	eee	0.20
Top	ccc	0.20	Position	fff	0.08

All dimensions are in millimeters.
*See footprint specification for pattern details.



Generic Representation with Full Grid Array

THE INFORMATION CONTAINED IN THIS DRAWING IS THE SOLE PROPERTY OF R&D INTERCONNECT SOLUTIONS. ANY REPRODUCTION IN PART OR WHOLE WITHOUT THE WRITTEN PERMISSION OF R&D INTERCONNECT SOLUTIONS IS PROHIBITED.

UNLESS OTHERWISE SPECIFIED
- DIMENSIONS ARE IN MILLIMETERS
- DIMES APPLY AFTER PLAYING
TOLERANCES UNLESS OTHERWISE NOTED: DECIMALS
ANGLES X.X ±0.25
X.XX ±0.10
X.XXX ±0.050

LEGEND:
 NOTE CALLOUT
 REVISION CHANGE
 ITEM NUMBER

7115 NORTHLAND TERRACE, SUITE 400
BROOKLYN PARK, MN 55428
(763) 509-0066

SCKT, 78GRY7.5X10.6-0.80, DS

REV	CAD FORMAT	DRAWING NO.	REV
C	SOLIDWORKS	107022-0038	B
SCALE	MATERIAL	See Page 1	
		SHEET 2 of 2	