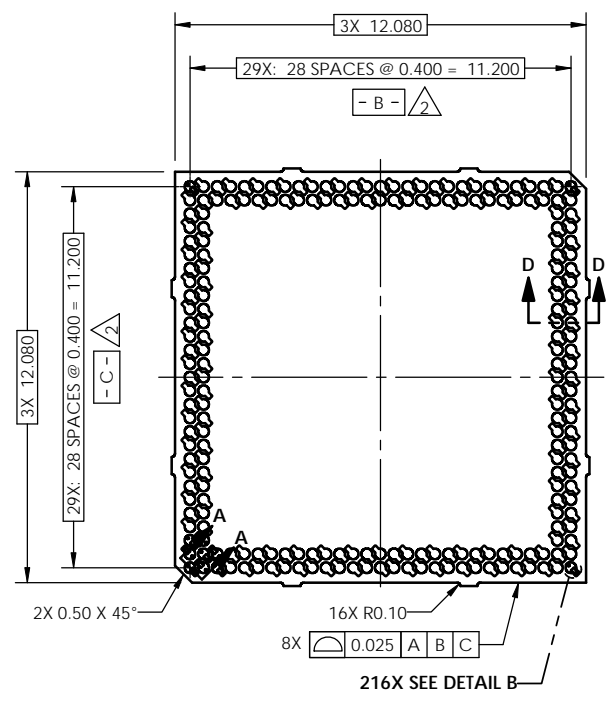


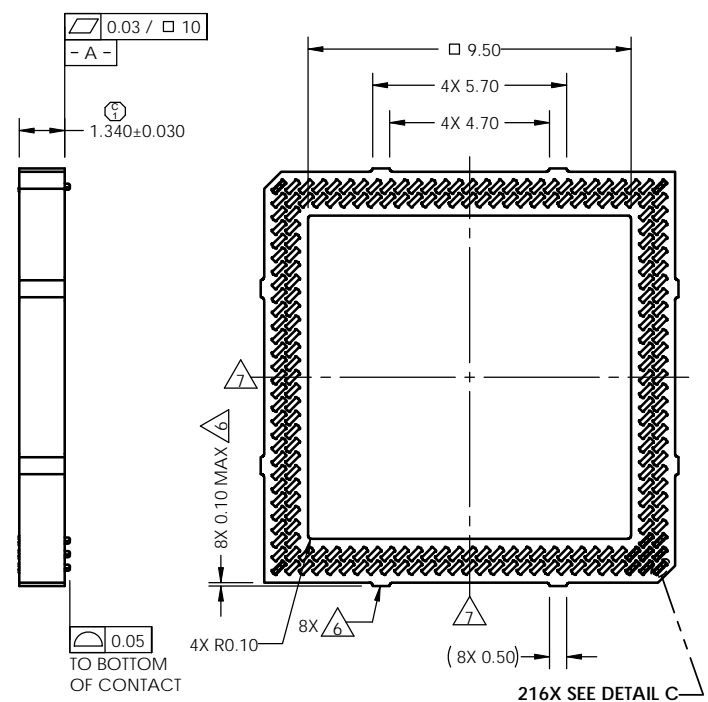
REV	ECO	BY	DESCRIPTION	APV	DATE
A	30525	AS	Initial Design	KW	08/19/10
B	30536	AS	Corrected typo in table, removed note 8 callouts, 1) Added geom. tolerance	KW	08/26/10
C	30594	AS	1) Was 1.315	KW	10/20/10
D	30649	MP	Added "MIN" to pocket depth	MP	12/09/10

Notes:

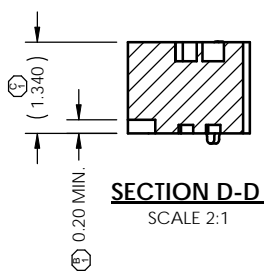
- Footprint part number is 104311-0244.
- Locates center of slot/contact.
- Press size 12 x 12.
- Reference Cascade Microtech specification 103862-0004 for solder attachment.
- Reference Cascade Microtech specification 103863-0001 for application notes.
- Tooling marks permitted. Maximum 0.10 protrusion (shown).
- E - Center of contact pattern.
- Datums - B - and - C - are determined by  $\phi 0.315$  openings at corner slots.
- Most contacts not shown to reduce file size.



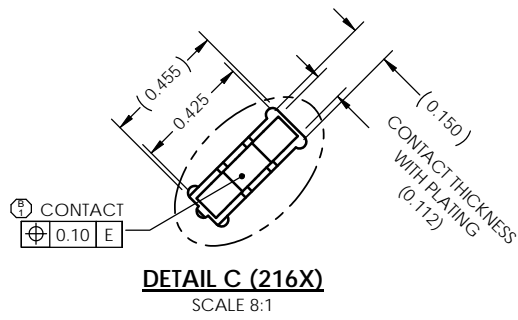
**SOCKET TOP (DUT) VIEW**



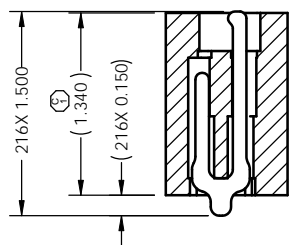
**SOCKET BOTTOM (PWB) VIEW**



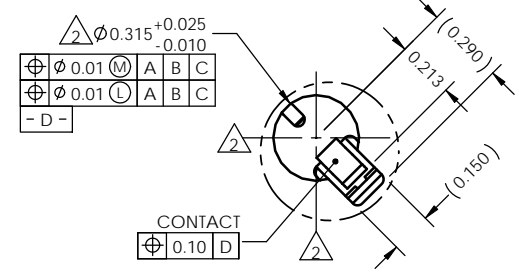
**SECTION D-D**  
SCALE 2:1



**DETAIL C (216X)**  
SCALE 8:1



**SECTION A-A**  
SCALE 4:1



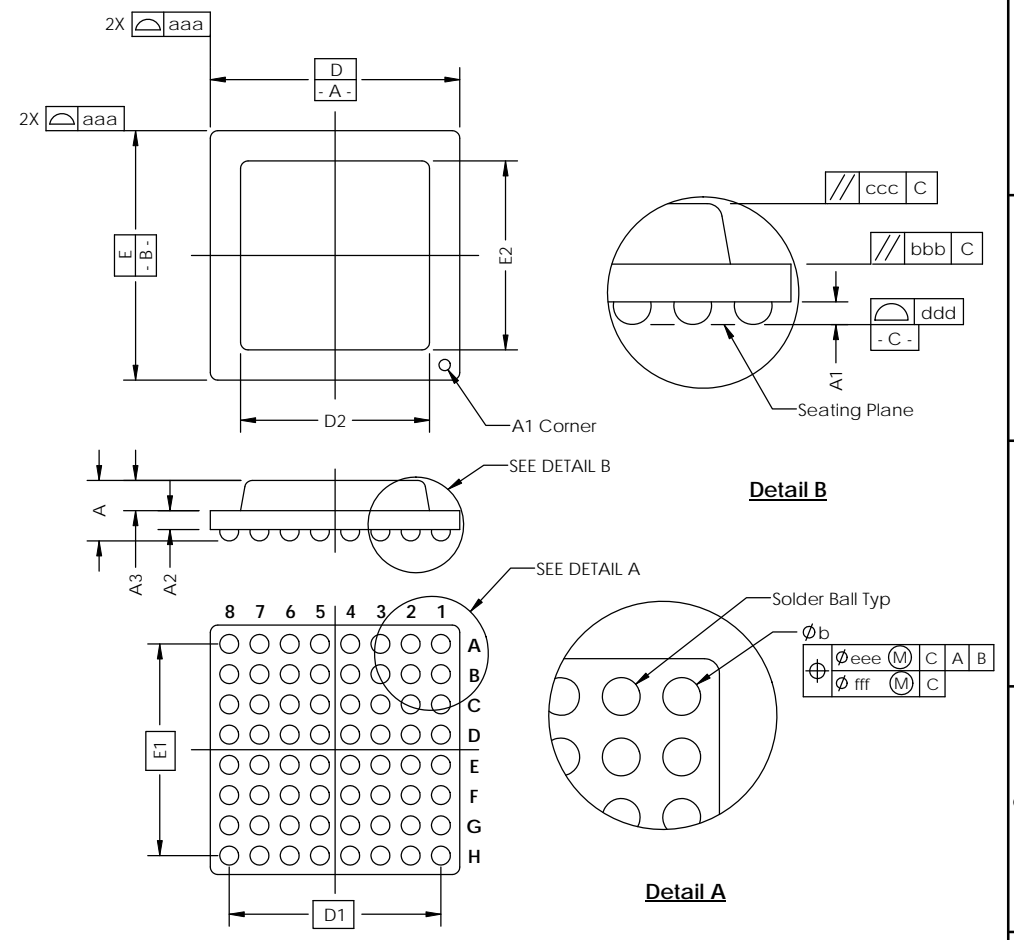
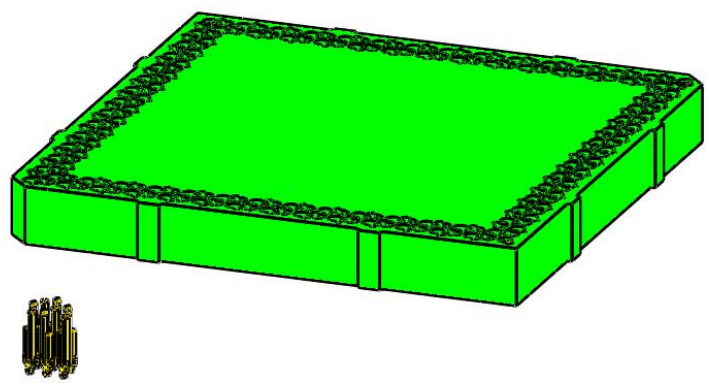
**DETAIL B (216X)**  
SCALE 8:1

Parts List	
Part Number	Description
107610-0043	SCKT, 216G4012-0.40, CUSTOM
103684-0002	PRESS, DEVICE INSERT (SOLD SEPARATELY)
105900-0004	EXTRACTION TOOL, 4X53 (SOLD SEPARATELY)
106083-0020	FRAME, ALIGN, G4012

UNLESS OTHERWISE SPECIFIED DIMENSIONS ARE IN MILLIMETERS DIM'S APPLY AFTER PLATING TOLERANCES UNLESS OTHERWISE NOTED: ANGLES ±1°		THE INFORMATION CONTAINED IN THIS DRAWING IS THE SOLE PROPERTY OF CASCADE MICROTECH, INC. ANY REPRODUCTION IN PART OR WHOLE WITHOUT THE WRITTEN PERMISSION OF CASCADE MICROTECH, INC. IS PROHIBITED.	
CAD GENERATED DRAWING DO NOT MANUALLY UPDATE		7115 NORTHLAND TERRACE SUITE 400 BROOKLYN PARK, MN 55428 (763) 509-0066	
DRAWING APPROVALS			
NAME A. Selberlich	DATE 08/19/10	<b>SCKT, 216G4012-0.40, CUSTOM</b>	
NAME K. Wilson	DATE 08/19/10		
THIRD ANGLE PROJECTION		SCALE C	SHEET D
LEGEND:		SEE BOM	
NOTE CALLOUT	REVISION CHANGE	1 of 2	
ITEM NUMBER			

SOCKET FOR DEVICES THAT ARE WITHIN THESE SPECIFICATIONS					
Lead Count	<b>N</b>	216	Package Size	<b>D</b>	12.00
Columns	<b>ND</b>	29		<b>E</b>	12.00
Rows	<b>NE</b>	29	Ball Spacing	<b>D1</b>	11.200
Pitch	<b>e</b>	0.40		<b>E1</b>	11.200
Ball Size	<b>b</b>	0.25±0.05	Encapsulant/ Top Size	<b>D2</b>	n/a
Total Thickness	<b>A</b>	n/a		<b>E2</b>	n/a
Ball Height	<b>A1</b>	0.175 MIN	Pattern Style	Full OR Irregular *	
Substrate Thickness	<b>A2</b>	n/a	Perimeter Rows	2	
Top Thickness	<b>A3</b>		Center Array	n/a	
Form Tolerances					
Edge	<b>aaa</b>	0.10	Bottom	<b>ddd</b>	0.08
Substrate	<b>bbb</b>	0.10	Position	<b>eee</b>	0.10
top	<b>ccc</b>	0.10	Position	<b>fff</b>	0.05

All dimensions are in millimeters.  
\* See footprint for pattern details.



**Generic Representation with Full Grid Array**

THE INFORMATION CONTAINED IN THIS DRAWING IS THE SOLE PROPERTY OF CASCADE MICROTECH, INC.  
ANY REPRODUCTION IN PART OR WHOLE WITHOUT THE WRITTEN PERMISSION OF CASCADE MICROTECH, INC. IS PROHIBITED.

UNLESS OTHERWISE SPECIFIED  
- DIMENSIONS ARE IN MILLIMETERS  
- DIMS APPLY AFTER PLATING  
TOLERANCES UNLESS OTHERWISE NOTED: DECIMALS  
ANGLES                   X.X     ±0.25  
                              X.XX    ±0.10  
                              X.XXX ±0.050

LEGEND:  
 NOTE CALLOUT  
 REVISION CHANGE  
 ITEM NUMBER

7115 NORTHLAND TERRACE SUITE 400  
BROOKLYN PARK, MN 55428  
(763) 509-0066

**SCKT, 216G4012-0.40, CUSTOM**

DESIGNER	CAD FORUM	DRAWING NO.	107022-0043	REV.	D
SCALE	SOLIDWORKS	MATERIAL	See Page 1	SHEET	2 of 2