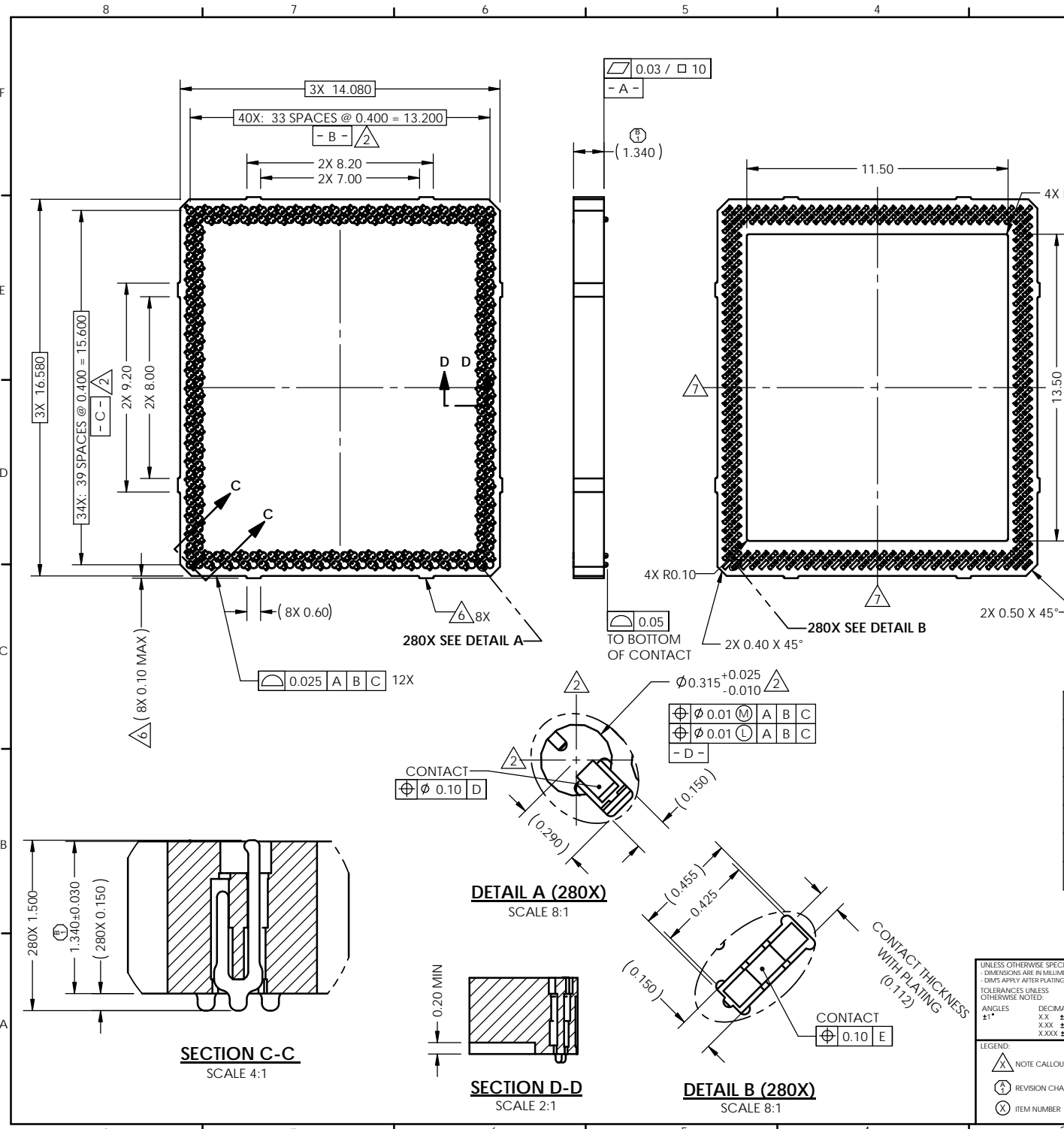


REV	ECO	BY	DESCRIPTION	APV	DATE
A	30582	MP	Initial Design	MP	10/07/10
B	30594	AS	1) Was 1.315	KW	10/20/10
C	31156	WB	Updated to current standard	KW	08/13/12



- Notes:
- Reference R&D Interconnect Solutions specification 103862-0004 for solder attachment.
 - Dimension locates center of contact/ slot.
 - Reference R&D Interconnect Solutions specification 103863-0001 for application notes.
 - Footprint part number is 104311-0234.
 - Datums B and C are determined by $\phi 0.315$ features on corner slots.
 - Tooling marks permitted. Maximum 0.10 protrusion (shown).
 - E - Center of Ball Pattern.
 - Unless otherwise noted, all features located $\phi 0.10$ A B C
 - Press size 14.00X16.50.
 - Not all contacts shown to reduce file size.

Parts List			
Item	Qty	Part Number	Description
-	-	107022-0045	SCKT, 280G4014X16.5-0.40
1	1	107622-0002	CS, 280G4014X16.5-0.40
-	-	103864-0120	PRESS, DEVICE INSERT, GRYP, 14X16.5 (SOLD SEPERATELY)
-	-	105900-0004	EXTRACTION TOOL, 4 X 53 (SOLD SEPERATELY)
-	-	107030-0033	STEN FLEX 280G4014X16.5-0.40 (SOLD SEPERATELY)

UNLESS OTHERWISE SPECIFIED DIMENSIONS ARE IN MILLIMETERS
 : DIMS APPLY AFTER PLATING
 TOLERANCES UNLESS OTHERWISE NOTED:
 ANGLES DECIMALS
 ±1° XX ±0.25
 XXX ±0.10
 XXXX ±0.050

THE INFORMATION CONTAINED IN THIS DRAWING IS THE SOLE PROPERTY OF R&D INTERCONNECT SOLUTIONS. ANY REPRODUCTION IN PART OR WHOLE WITHOUT THE WRITTEN PERMISSION OF R&D INTERCONNECT SOLUTIONS IS PROHIBITED.

CAD GENERATED DRAWING
 DO NOT MANUALLY UPDATE

7115 NORTHLAND TERRACE SUITE 400
 BROOKLYN PARK, MN 55428
 (763) 509-0066

SCKT, 280G4014X16.5-0.40

DRAWING APPROVALS

DESIGN	M. Peery	DATE	10/07/10
APPROV	M. Peery	DATE	10/07/10

THIRD ANGLE PROJECTION

LEGEND:

- NOTE CALLOUT
- REVISION CHANGE
- ITEM NUMBER

SCALE: C

MATERIAL: SOLIDWORKS

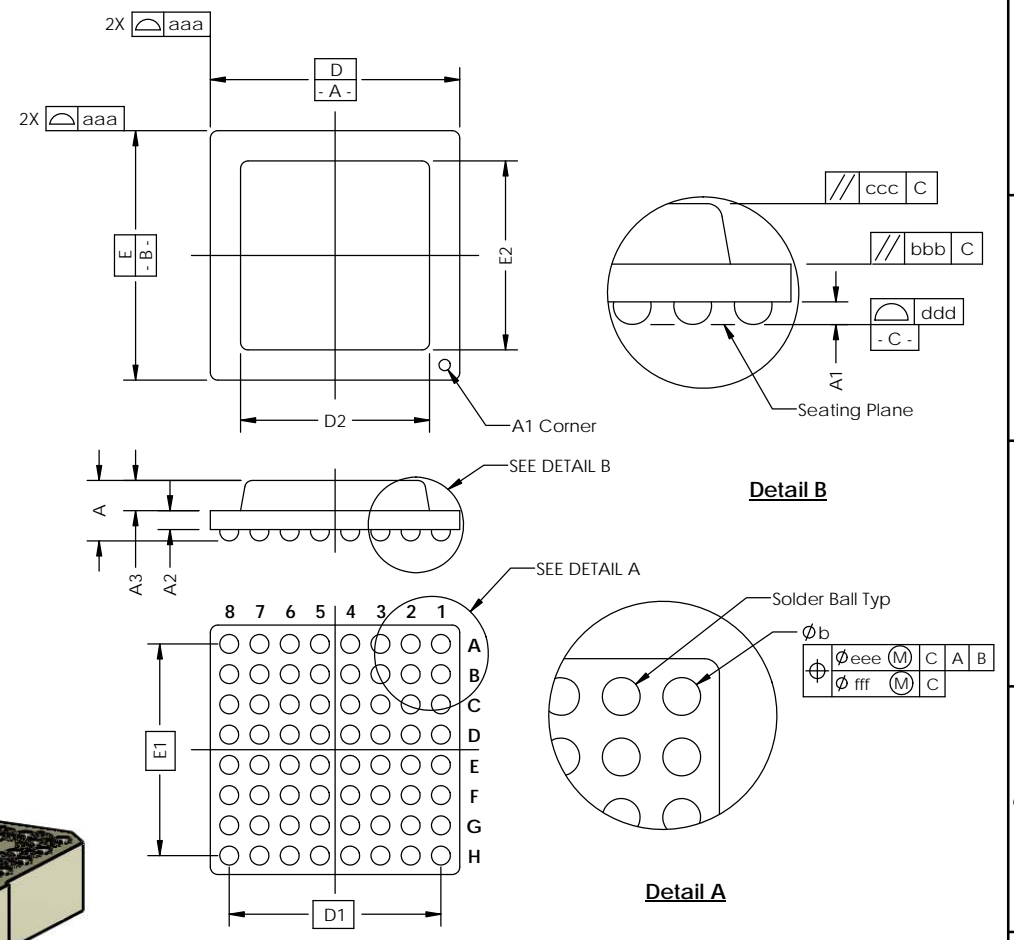
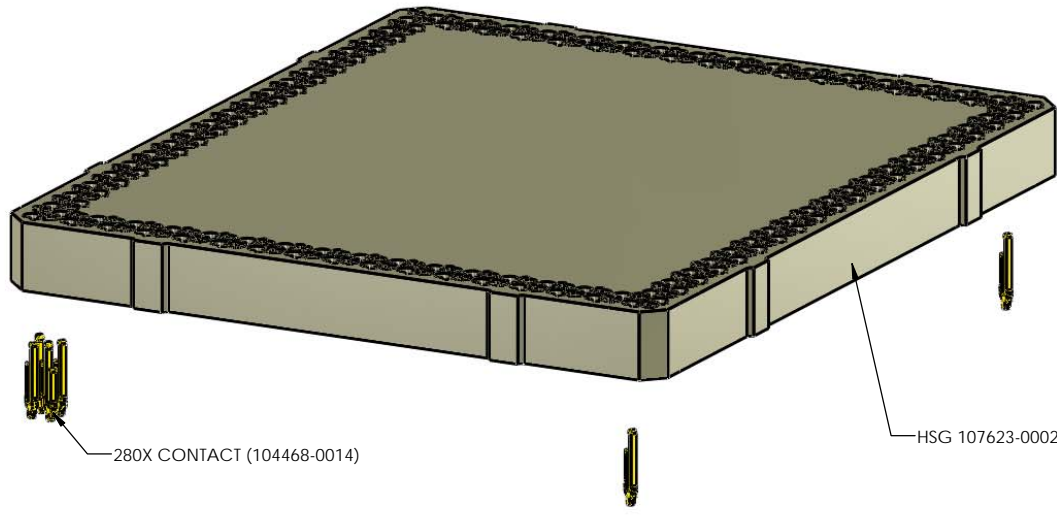
DESCRIPTION: 107022-0045

SHEET: C

1 of 2

SOCKET FOR DEVICES THAT ARE WITHIN THESE SPECIFICATIONS					
Lead Count	N	280	Package Size	D	14.00
Columns	ND	34	Ball Spacing	E	16.50
Rows	NE	40		D1	13.200
Pitch	e	0.40	Encapsulant/ Top Size	E1	15.600
Ball Size	b	0.25±0.05		D2	n/a
Total Thickness	A	n/a	Pattern Style	E2	n/a
Ball Height	A1	0.175 MIN		Perimeter*	
Substrate Thickness	A2	n/a	Perimeter Rows		2
Top Thickness	A3		Center Array		N/A
Form Tolerances					
Edge	aaa	0.10	Bottom	ddd	0.08
Substrate	bbb	0.10	Position	eee	0.15
top	ccc	0.10	Position	fff	0.05

All dimensions are in millimeters.
* See footprint for pattern details.



Generic Representation with Full Grid Array

<small>THE INFORMATION CONTAINED IN THIS DRAWING IS THE SOLE PROPERTY OF R&D INTERCONNECT SOLUTIONS. ANY REPRODUCTION IN PART OR WHOLE WITHOUT THE WRITTEN PERMISSION OF R&D INTERCONNECT SOLUTIONS IS PROHIBITED.</small>			
<small>UNLESS OTHERWISE SPECIFIED - DIMENSIONS ARE IN MILLIMETERS - DIMES APPLY AFTER PLATING</small> <small>TOLERANCES UNLESS OTHERWISE NOTED:</small>		7115 NORTHLAND TERRACE, SUITE 400 BROOKLYN PARK, MN 55428 (763) 509-0066	
<small>DECIMALS</small> <small>ANGLES</small>	<small>XX ±0.25</small> <small>XXX ±0.10</small> <small>X.XXX ±0.050</small>	SCKT, 280G4014X16.5-0.40	
LEGEND: NOTE CALLOUT REVISION CHANGE ITEM NUMBER	<small>SCALE</small> C	<small>DESIGNED BY</small> SOLIDWORKS	<small>DRAWING NO.</small> 107022-0045
	<small>MATERIAL</small> See Page 1	<small>REV.</small> C	<small>SHEET</small> 2 of 2