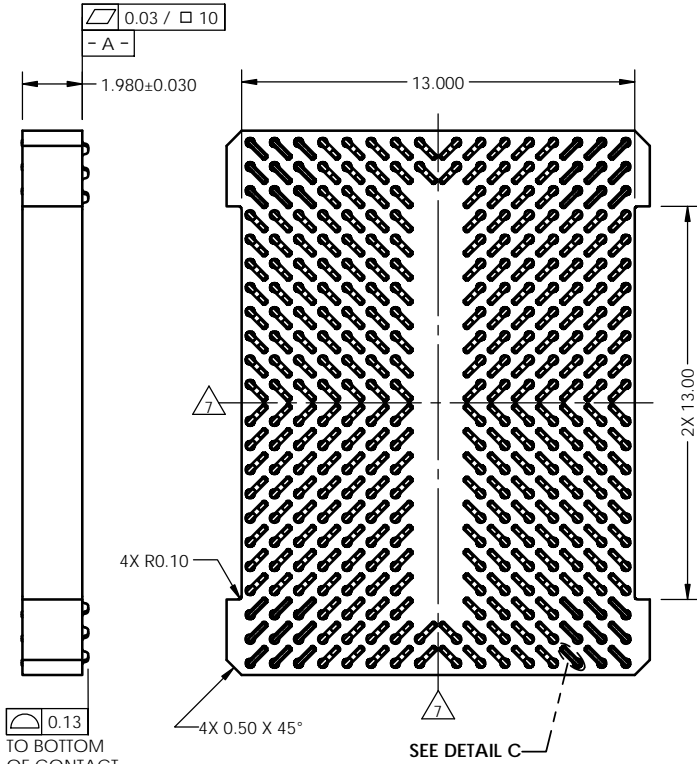
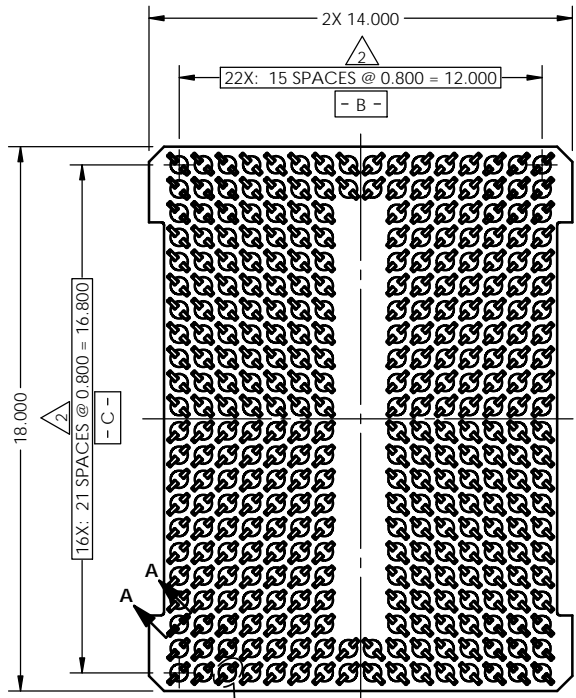
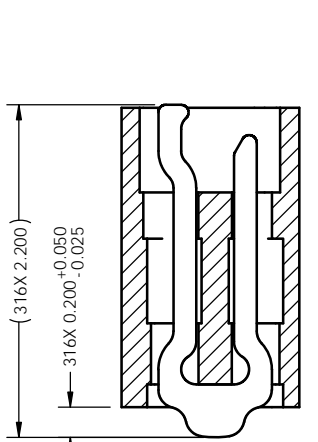


REV	ECO	BY	DESCRIPTION	APV	DATE
A	31312	AS	Initial Design	MP	6/20/13

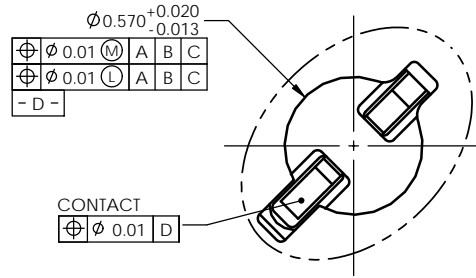


- Notes:
- Footprint part number is 104311-0372.
  - Dimension locates center of slot/contact.
  - Unless otherwise noted, all features located  $\oplus 0.10$  A B C
  - Reference HSI0 Technologies specification 103862-0001 for application notes.
  - Press size is 14.00 x 18.00
  - Datum - B - and - C - are determined by  $\varnothing 0.570$  opening in corner slots.
  - E - center of contact pattern.
  - Not all contacts are shown.

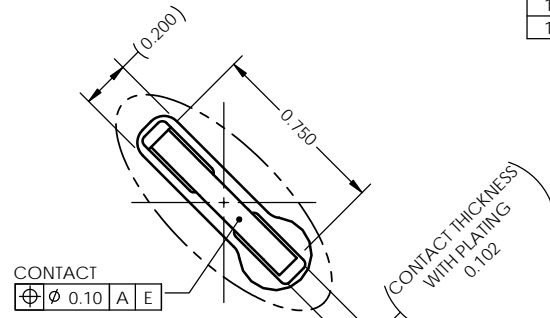
PARTS LIST		
Part Number	Qty.	Description
107088-0010	-	SCKT, 316G80 14X18-0.80
107080-0010	1	CS, 316G80 14X18-0.80
103864-0116	0	PRESS, DEV INS, 14.0 X 18.0 (SOLD SEP.)
104553-0289	0	STEN, FLEX, 316G80 14X18-0.80 (SOLD SEP.)



**SECTION A-A**  
SCALE 5:1  
(VIEW ROTATED 45° CW)



**DETAIL B (316X)**  
SCALE 8:1



**DETAIL C (316X)**  
SCALE 8:1

UNLESS OTHERWISE SPECIFIED:		NAME	DATE
DIMENSIONS ARE IN MILLIMETERS		AS	06/20/13
TOLERANCES:		CHECKED	MP
ANGULAR ± 1°			
X.X ± 0.25			
X.XX ± 0.10			
X.XXX ± 0.050			

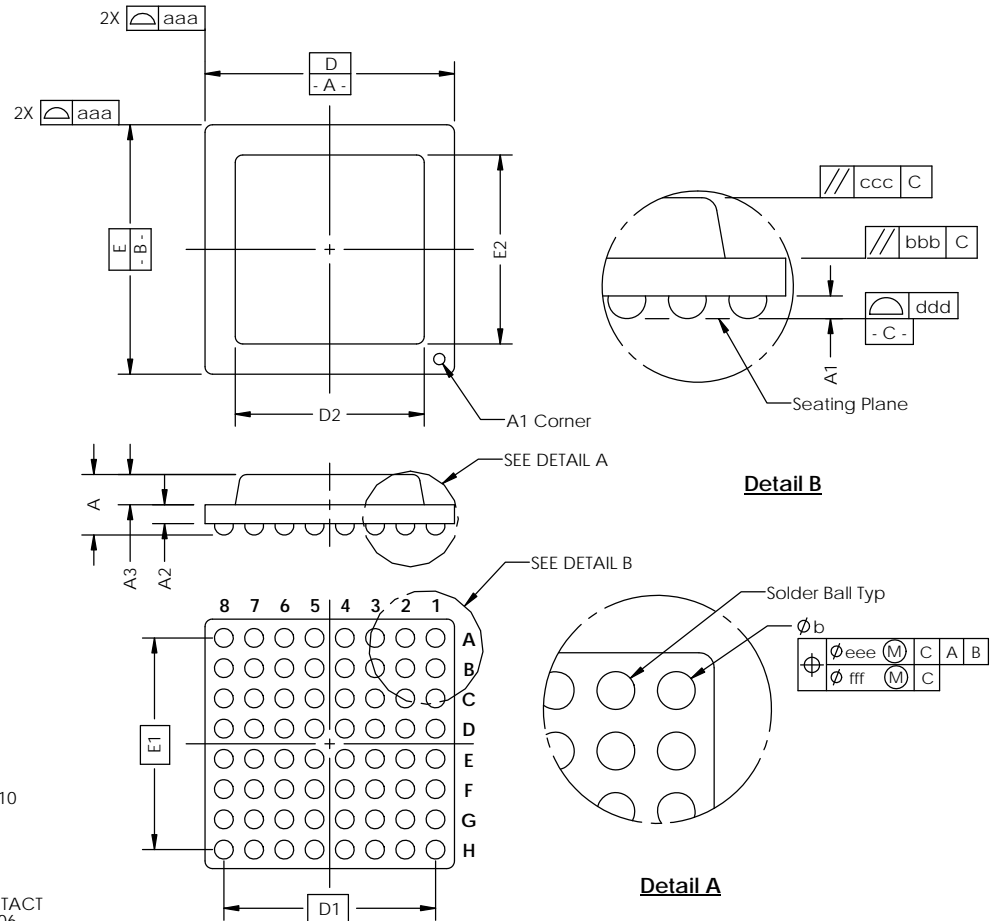
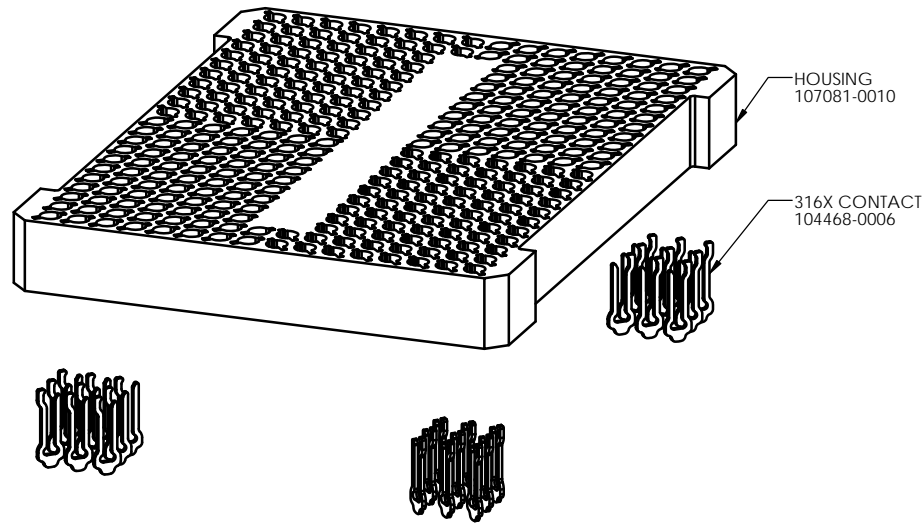
DRAWN		AS	06/20/13
CHECKED		MP	06/20/13
LEGEND:			
$\triangle$	NOTE CALLOUT		
$\square$	REVISION CHANGE		
$\circ$	ITEM NUMBER		

<b>HSIO TECHNOLOGIES, LLC.</b>	
13300 67th AVENUE NORTH	
MAPLE GROVE, MINNESOTA 55311	
763-447-6260	
TITLE:	
SCKT, 316G80 14X18-0.80	
DWG. NO.	REV
<b>107088-0010</b>	<b>A</b>
SCALE: 10:1	SIZE: C
SHEET 1 OF 2	

THE INFORMATION CONTAINED IN THIS DRAWING IS THE SOLE PROPERTY OF HSI0 TECHNOLOGIES, LLC. ANY REPRODUCTION IN PART OR AS A WHOLE WITHOUT THE WRITTEN PERMISSION OF HSI0 TECHNOLOGIES, LLC IS PROHIBITED.

SOCKET FOR DEVICES THAT ARE WITHIN THESE SPECIFICATIONS					
Lead Count	<b>N</b>	316	Package Size	<b>D</b>	14.00
Columns	<b>ND</b>	16		<b>E</b>	18.00
Rows	<b>NE</b>	22	Ball Spacing	<b>D1</b>	12.000
Pitch	<b>e</b>	0.80		<b>E1</b>	16.800
Ball Size	<b>b</b>	0.50±0.05	Encapsulant/ Top Size	<b>D2</b>	n/a
Total Thickness	<b>A</b>	n/a		<b>E2</b>	n/a
Ball Height	<b>A1</b>	0.325 Min.	Pattern Style	CUSTOM*	
Substrate Thickness	<b>A2</b>	n/a	Perimeter Rows	n/a	
Top Thickness	<b>A3</b>		Center Array	n/a	
Form Tolerances					
Edge	<b>aaa</b>	0.20	Bottom	<b>ddd</b>	0.15
Substrate	<b>bbb</b>	0.20	Position	<b>eee</b>	0.20
top	<b>ccc</b>	0.20	Position	<b>fff</b>	0.08

All dimensions are in millimeters.  
\* See footprint for pattern details.



**Generic Representation with Full Grid Array**

<b>PROPRIETARY AND CONFIDENTIAL</b>			
THE INFORMATION CONTAINED IN THIS DRAWING IS THE SOLE PROPERTY OF HSIO TECHNOLOGIES, LLC. ANY REPRODUCTION IN PART OR AS A WHOLE WITHOUT THE WRITTEN PERMISSION OF HSIO TECHNOLOGIES, LLC IS PROHIBITED.			
UNLESS OTHERWISE SPECIFIED:	NAME	DATE	<b>HSIO TECHNOLOGIES, LLC.</b> 13300 67th AVENUE NORTH MAPLE GROVE, MINNESOTA 55311 763-447-6260
DIMENSIONS ARE IN MILLIMETERS	DRAWN	AS 06/20/13	
TOLERANCES: ANGULAR: ± 1° X.X ±0.25 X.XX ±0.10 X.XXX ±0.050	CHECKED	MP 06/20/13	
LEGEND:			TITLE:
△ NOTE CALLOUT ○ REVISION CHANGE ○ ITEM NUMBER			DWG. NO. <b>107088-0010</b>
			SCALE: 10:1 SIZE: C SHEET 2 OF 2