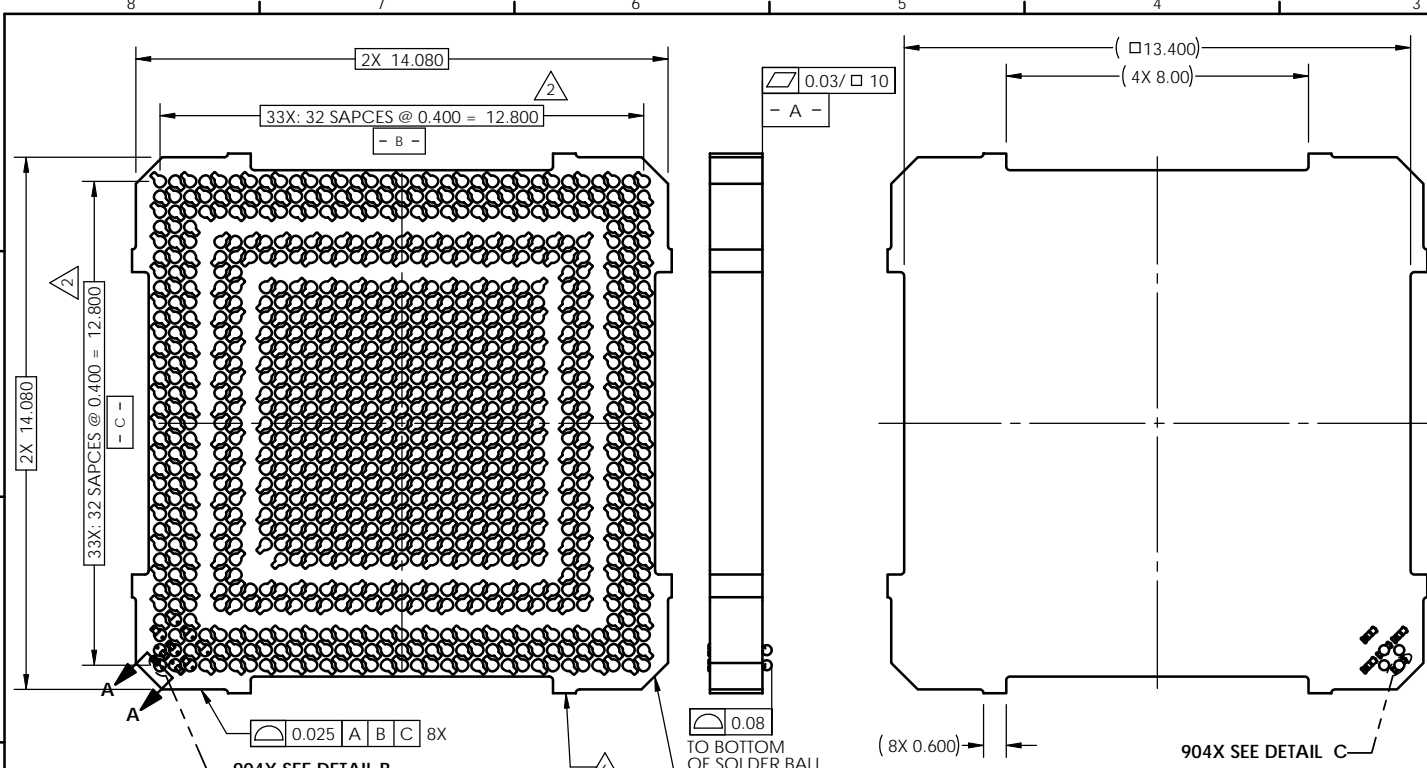
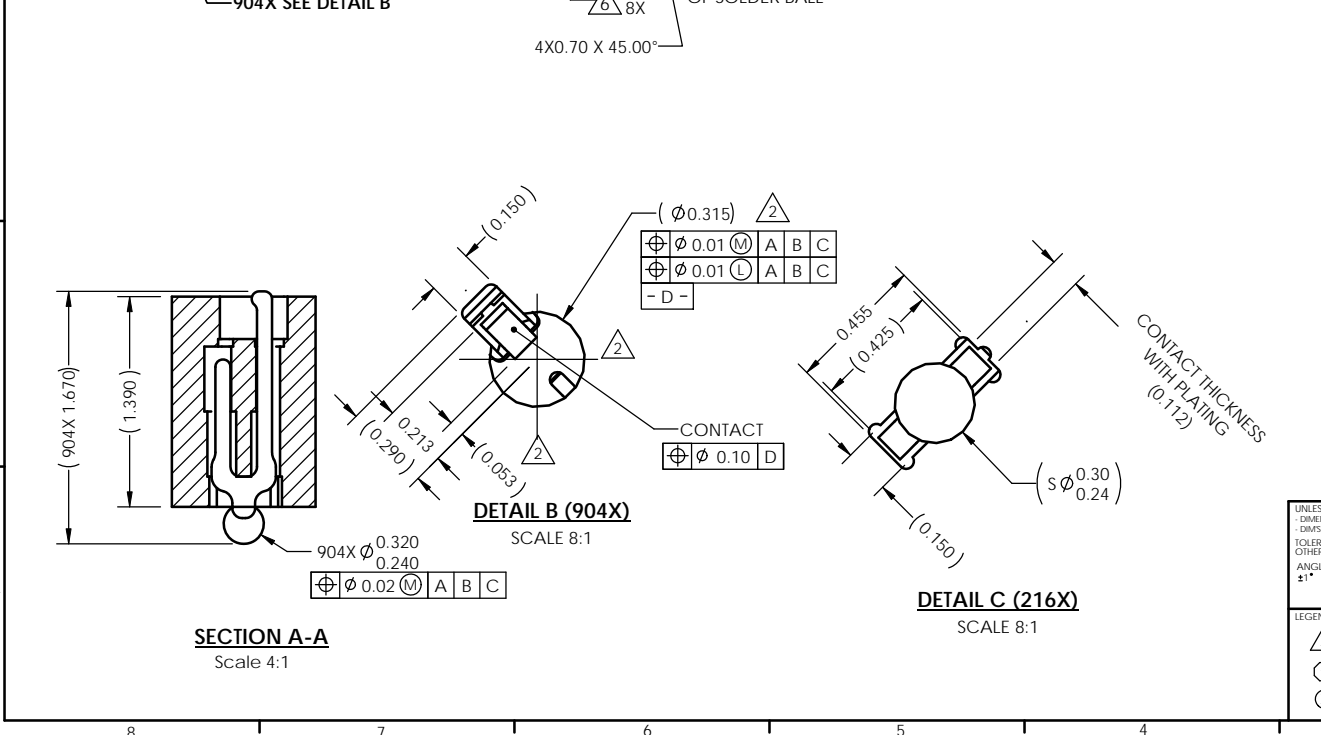


REV	ECO	BY	DESCRIPTION	APV	DATE
A	30018	EJT	Initial Design	MP	11/07/09



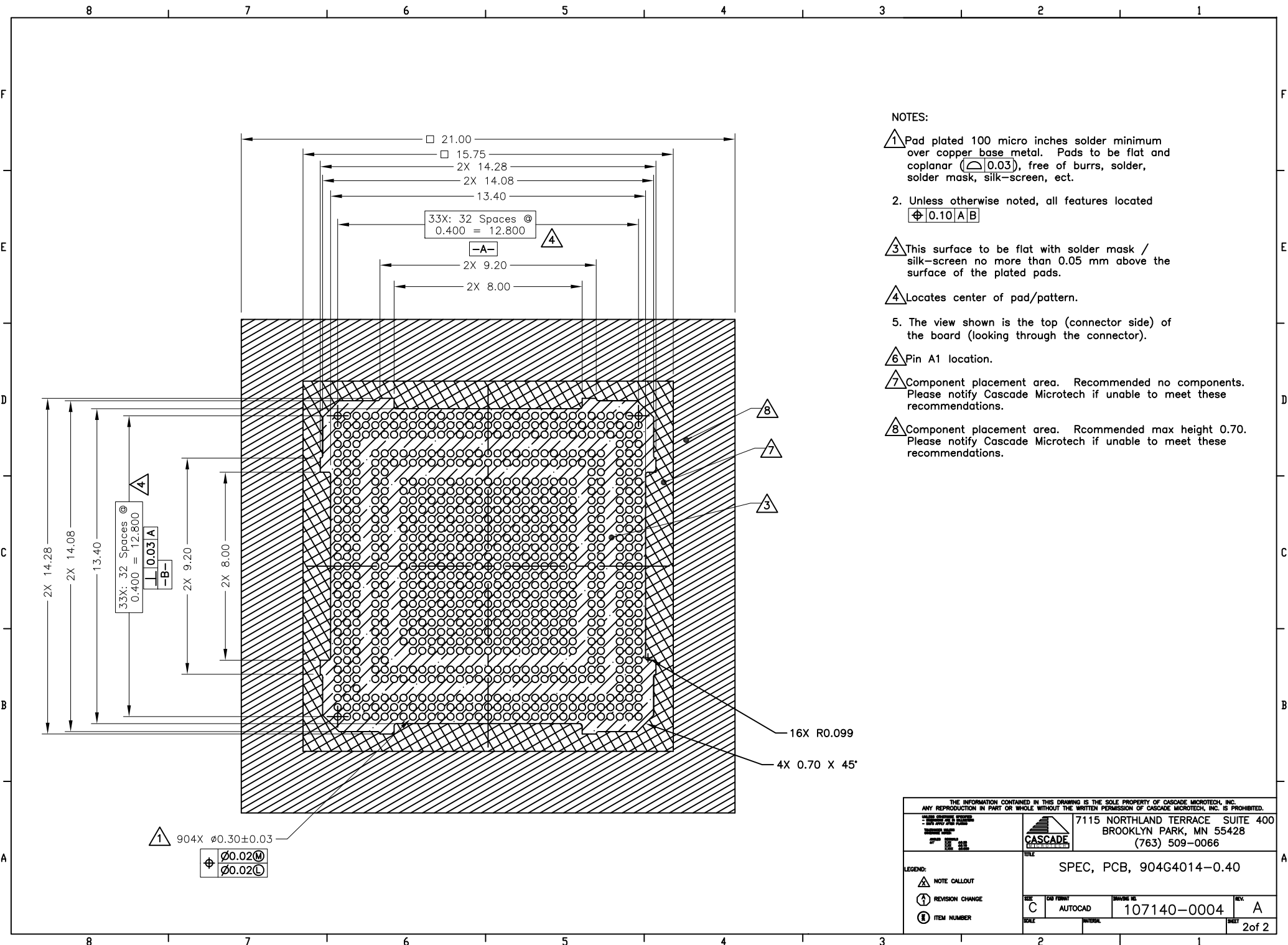
- Notes:
- Reference Cascade Microtech specification 103862-0001 for solder attachment.
 - Dimension locates center of contact/ slot.
 - Reference Cascade Microtech specification 103863-0001 for application notes.
 - Socket designed for Qualcomm package as defined on outline drawing (POD) NT90-VN944-1 Rev A..
 - Datums B and C are determined by $\phi 0.315$ openings on corner slots.
 - Tooling marks permitted. Maximum 0.10 protrusion (shown).

Parts List			
Item	Qty	Part Number	Description
-	-	107140-0004	SCKT, 904G4014-0.40
-	-	103864-0004	PRESS, DEVICE INSERT, GRYP 14X14 (SOLD SEPARATELY)
-	-	105900-0004	EXTRACTION TOOL, 4 X 53 (SOLD SEPARATELY)
1	1	107141-0004	CS, 904G4014-0.40 W/SOLDER BALLS
1.1	1	107143-0004	HSG, 904G4014-0.40
1.2	216	104468-0014	CONTACT, G40, HALF, $\phi 0.25$, TIN, 0.1016



UNLESS OTHERWISE SPECIFIED DIMENSIONS ARE IN MILLIMETERS DIMS APPLY AFTER PLATING TOLERANCES UNLESS OTHERWISE NOTED

ANGLES $\pm 1^\circ$	DECIMALS XX ± 0.25 XXX ± 0.10 XXXX ± 0.050	THE INFORMATION CONTAINED IN THIS DRAWING IS THE SOLE PROPERTY OF CASCADE MICROTECH, INC. ANY REPRODUCTION IN PART OR WHOLE WITHOUT THE WRITTEN PERMISSION OF CASCADE MICROTECH, INC. IS PROHIBITED.	CASCADE 7115 NORTHLAND TERRACE SUITE 400 BROOKLYN PARK, MN 55428 (763) 509-0066
DRAWING APPROVALS		NAME DATE E.Turin 12/02/09 M.Peery 12/07/09	
LEGEND:		THIRD ANGLE PROJECTION 	
NOTE CALLOUT REVISION CHANGE ITEM NUMBER	SCALE: 2 MATERIAL: C SOLIDWORKS: C DRAWING NO: 107140-0004 SHEET: A	SCKT, 904G40142-0.40 W/ SOLDER BALLS SEE BOM 1 of 2	



NOTES:

- 1. Pad plated 100 micro inches solder minimum over copper base metal. Pads to be flat and coplanar ($\Delta 0.03$), free of burrs, solder, solder mask, silk-screen, ect.
- 2. Unless otherwise noted, all features located $\Phi 0.10 | A | B$
- 3. This surface to be flat with solder mask / silk-screen no more than 0.05 mm above the surface of the plated pads.
- 4. Locates center of pad/pattern.
- 5. The view shown is the top (connector side) of the board (looking through the connector).
- 6. Pin A1 location.
- 7. Component placement area. Recommended no components. Please notify Cascade Microtech if unable to meet these recommendations.
- 8. Component placement area. Recommended max height 0.70. Please notify Cascade Microtech if unable to meet these recommendations.

<small>THE INFORMATION CONTAINED IN THIS DRAWING IS THE SOLE PROPERTY OF CASCADE MICROTECH, INC. ANY REPRODUCTION IN PART OR WHOLE WITHOUT THE WRITTEN PERMISSION OF CASCADE MICROTECH, INC. IS PROHIBITED.</small>			
		7115 NORTHLAND TERRACE SUITE 400 BROOKLYN PARK, MN 55428 (763) 509-0066	
LEGEND: ⚠ NOTE CALLOUT ↻ REVISION CHANGE ① ITEM NUMBER		TITLE SPEC, PCB, 904G4014-0.40	
SIZE C	CAD FORMAT AUTOCAD	DRAWING NO. 107140-0004	REV. A
SCALE NATURAL		SHEET 2 of 2	