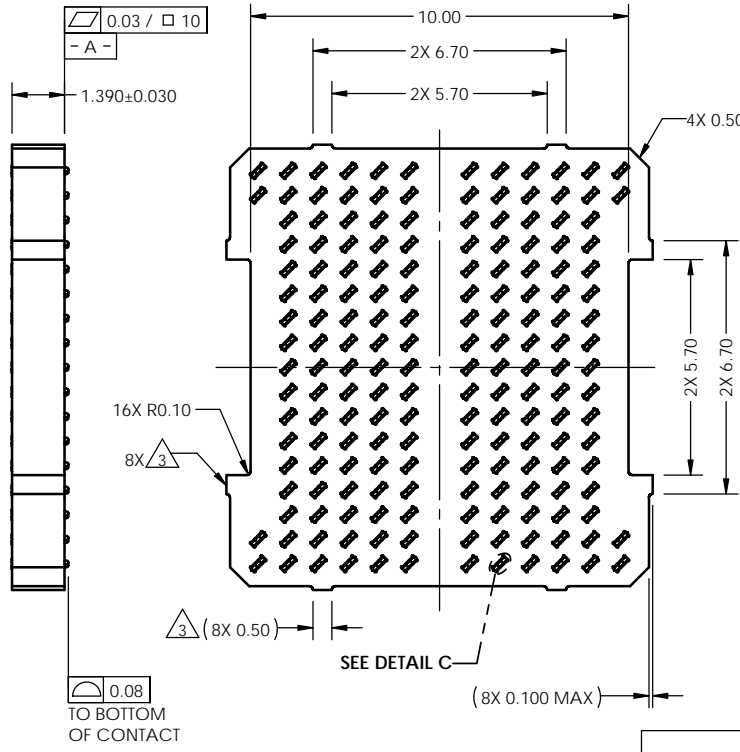
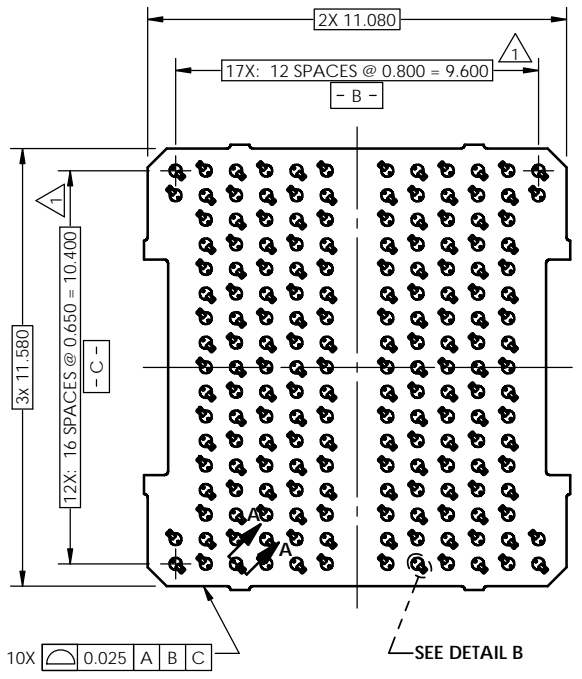


REV	ECO	BY	DESCRIPTION	APV	DATE
A	31082	SK	Initial Design	KW	05/12/12

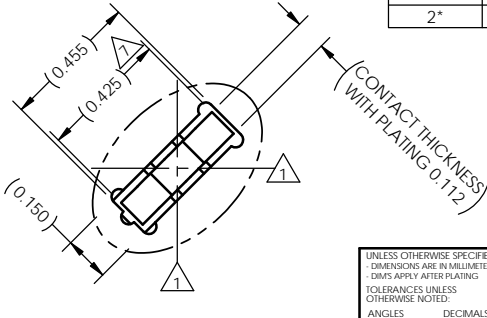
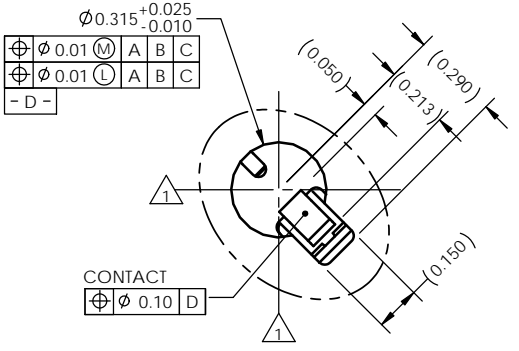
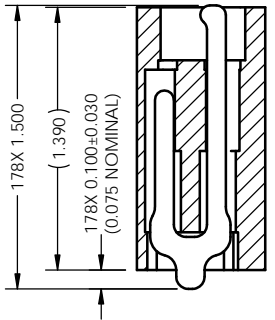


- Notes:
- Dimension locates center of contact/slot.
  - Datums **- B -** and **- C -** are determined by  $\phi 0.315$  opening on corner slot.
  - Tooling marks permitted. Maximum 0.10 protrusion (shown).
  - Reference R&D Interconnect Solutions specification 103863-0001 for application notes.
  - Footprint part number 104311-0320.
  - Datums B and C are determined by  $\phi 0.315$  openings on corner slots.
  - F -** Center of Contact.

10X  $\frac{0.025}{A B C}$

$\frac{0.08}{TO BOTTOM OF CONTACT}$

Parts List			
Item No.	Qty.	Part Number	Description
-	-	107140-0037	SCKT, 178G4011X11.5-0.80X0.65
-	-	103864-0061	PRESS, DEVICE INSERT, GRYP 11X11.5 (SOLD SEPARATELY)
-	-	105900-0004	EXTRACTION TOOL, 4 X 53 (SOLD SEPARATELY)
1	1	107142-0035	CS, 178G4011X11.5-0.80X0.65 W/O SOLDER BALLS
2*	1	106083-0058	FRAME, ALIGN, G40 11X11.5



**SECTION A-A**  
SCALE 5:1

**DETAIL B**  
SCALE 8:1

**DETAIL C**  
SCALE 8:1

UNLESS OTHERWISE SPECIFIED DIMENSIONS ARE IN MILLIMETERS  
DIM'S APPLY AFTER PLATING  
TOLERANCES UNLESS OTHERWISE NOTED:  
ANGLES ±1°  
DECIMALS .XX ±0.25  
XXX ±0.10  
XXXX ±0.50

THE INFORMATION CONTAINED IN THIS DRAWING IS THE SOLE PROPERTY OF CASCADE MICROTECH, INC. ANY REPRODUCTION IN PART OR WHOLE WITHOUT THE WRITTEN PERMISSION OF CASCADE MICROTECH, INC. IS PROHIBITED.

CAD GENERATED DRAWING DO NOT MANUALLY UPDATE

**DRAWING APPROVALS**

DESIGN: S. Klanderud	DATE: 05/12/12
APPROV: K. Wilson	DATE: 05/12/12

THIRD ANGLE PROJECTION

LEGEND:  
 NOTE CALLOUT  
 REVISION CHANGE  
 ITEM NUMBER

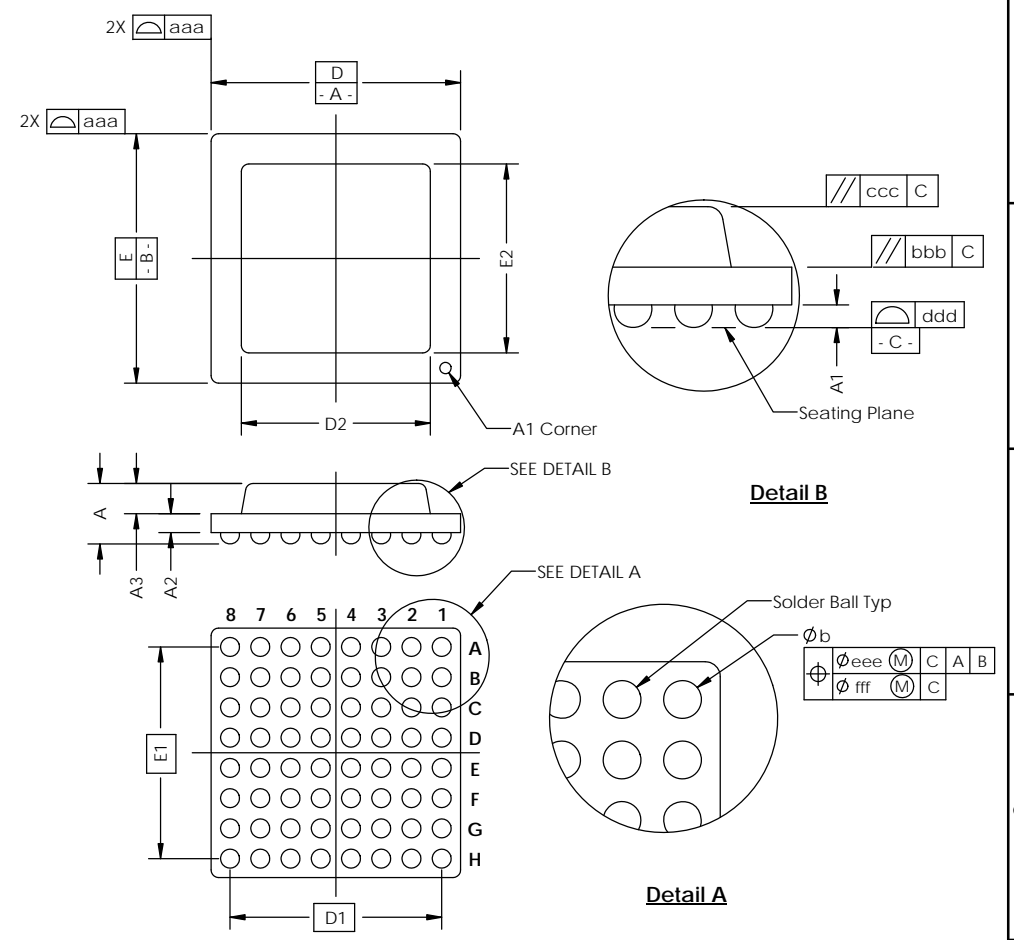
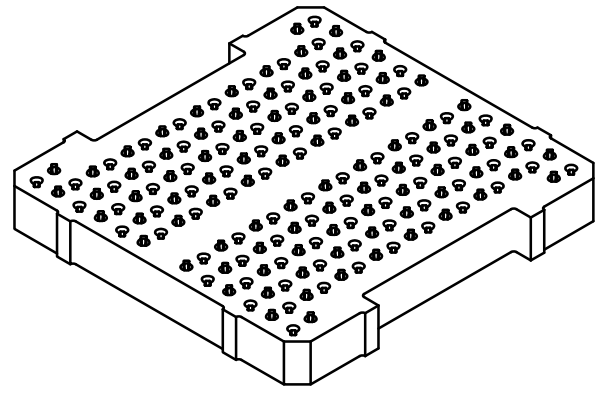
7115 NORTHLAND TERRACE SUITE 400  
BROOKLYN PARK, MN 55428  
(763) 509-0066

**SCKT, 178G4011X11.5-0.80X0.65**

SCALE: C	MATERIAL: CUSTOMER SOLIDWORKS	DRAWING NO: 107140-0037	SHEET: A
SEE BOM		1 of 2	

SOCKET FOR DEVICES THAT ARE WITHIN THESE SPECIFICATIONS					
Lead Count	<b>N</b>	178	Package Size	<b>D</b>	11.00
Columns	<b>ND</b>	13		<b>E</b>	11.50
Rows	<b>NE</b>	17	Ball Spacing	<b>D1</b>	9.60
Pitch	<b>e</b>	0.80x0.65		<b>E1</b>	10.40
Ball Size	<b>b</b>	0.25±0.05	Encapsulant/ Top Size	<b>D2</b>	n/a
Total Thickness	<b>A</b>	n/a		<b>E2</b>	n/a
Ball Height	<b>A1</b>	0.175 MIN	Pattern Style	Irregular*	
Substrate Thickness	<b>A2</b>	n/a	Perimeter Rows	n/a	
Top Thickness	<b>A3</b>		Center Array	n/a	
Form Tolerances					
Edge	<b>aaa</b>	0.10	Bottom	<b>ddd</b>	0.08
Substrate	<b>bbb</b>	0.10	Position	<b>eee</b>	0.10
top	<b>ccc</b>	0.10	Position	<b>fff</b>	0.05

All dimensions are in millimeters.  
\* See footprint for pattern details.



**Generic Representation with Full Grid Array**

THE INFORMATION CONTAINED IN THIS DRAWING IS THE SOLE PROPERTY OF R&D INTERCONNECT SOLUTIONS. ANY REPRODUCTION IN PART OR WHOLE WITHOUT THE WRITTEN PERMISSION OF R&D INTERCONNECT SOLUTIONS IS PROHIBITED.			
UNLESS OTHERWISE SPECIFIED - DIMENSIONS ARE IN MILLIMETERS - DIMES APPLY AFTER PLATING TOLERANCES UNLESS OTHERWISE NOTED:	DECIMALS X.X     ±0.25 X.XX   ±0.10 X.XXX   ±0.050	7115 NORTHLAND TERRACE SUITE 400 BROOKLYN PARK, MN 55428 (763) 509-0066	
<b>SCKT, 178G4011X11.5-0.80X0.65</b>			
LEGEND:	NOTE CALLOUT	REVISION CHANGE	ITEM NUMBER
SCALE	CAD FORMAT	SOLIDWORKS	DRAWING NO. 107140-0037
			REV. <b>A</b>
		See Page 1	SHEET 2 of 2