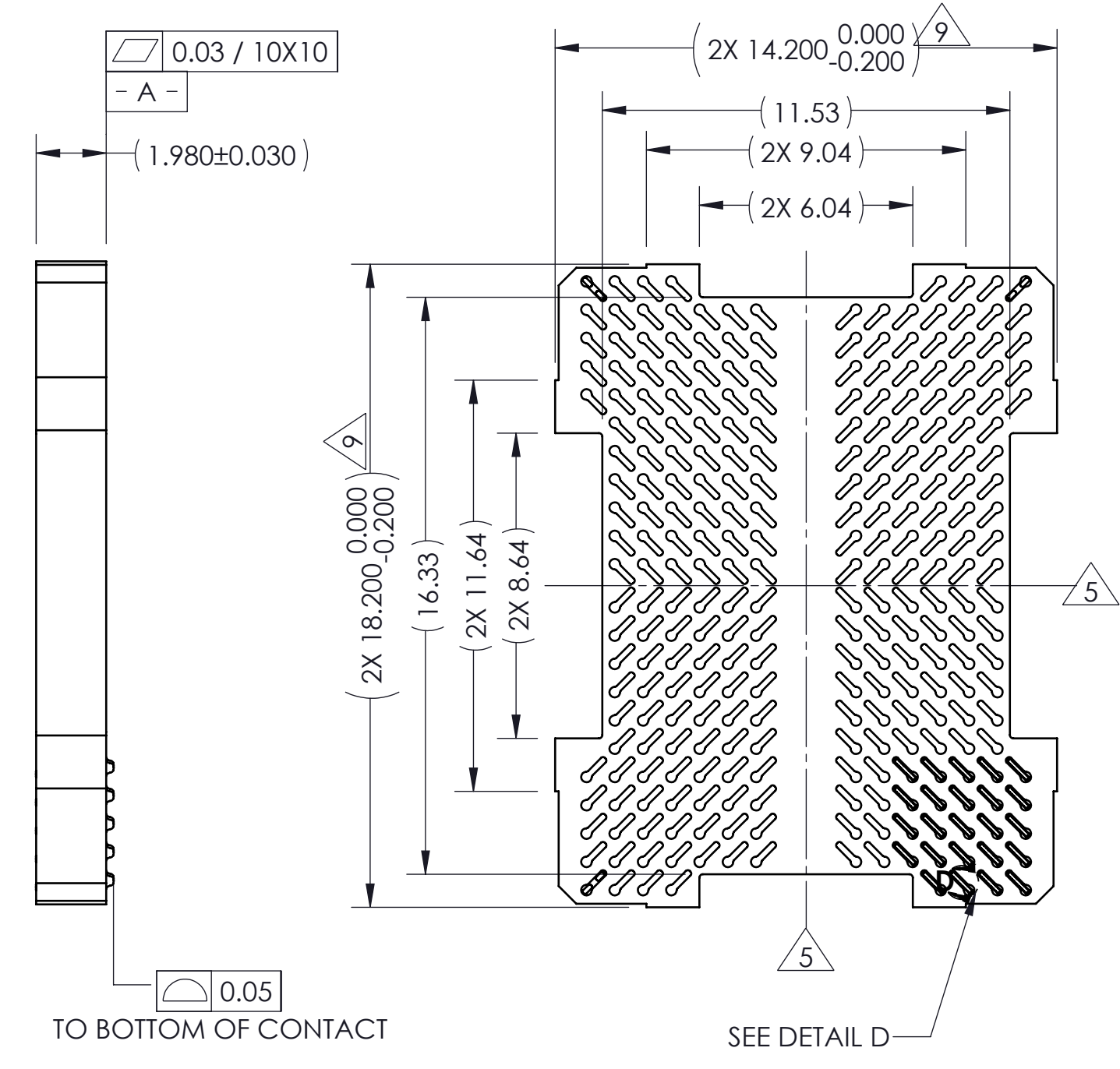
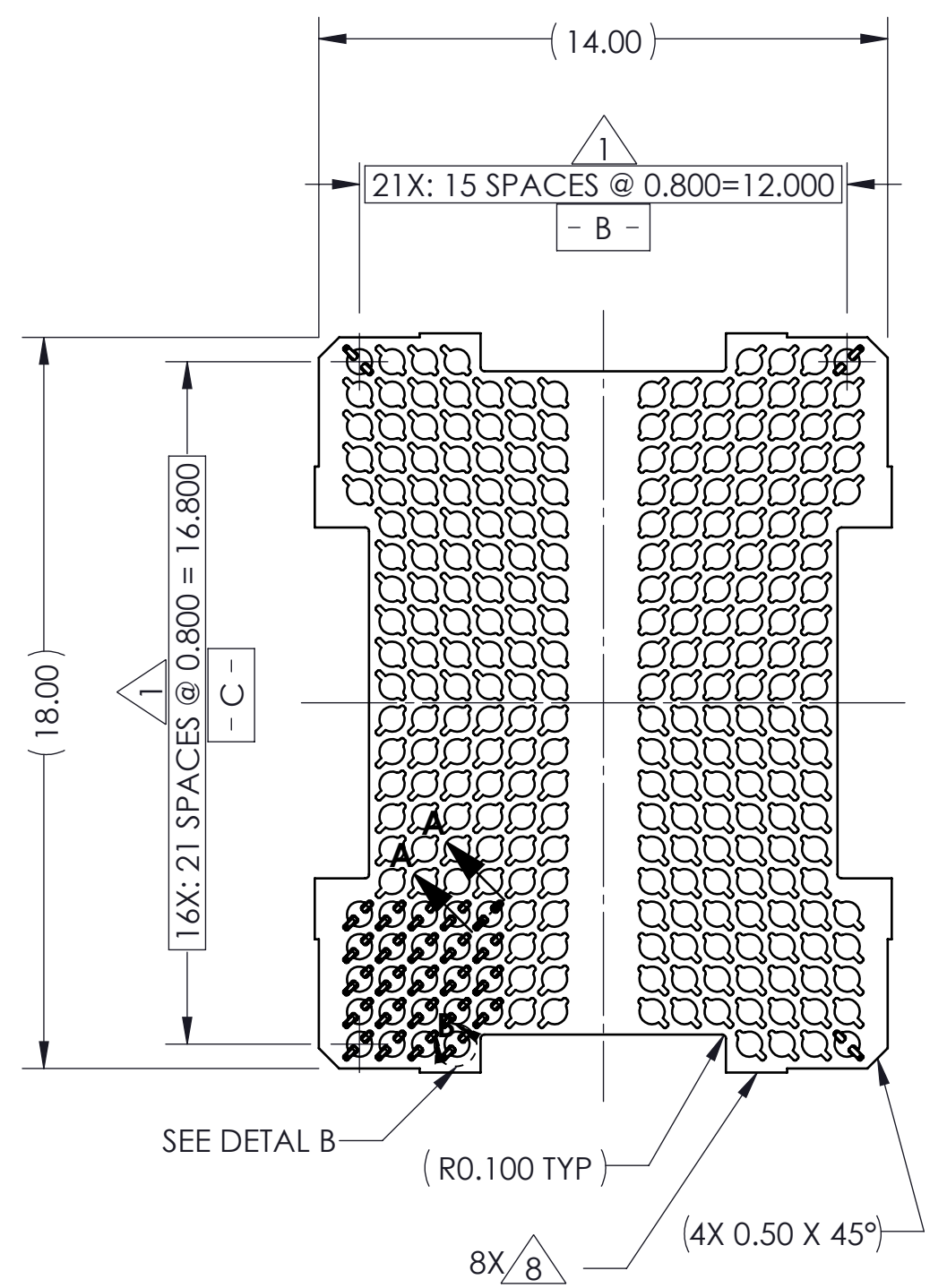
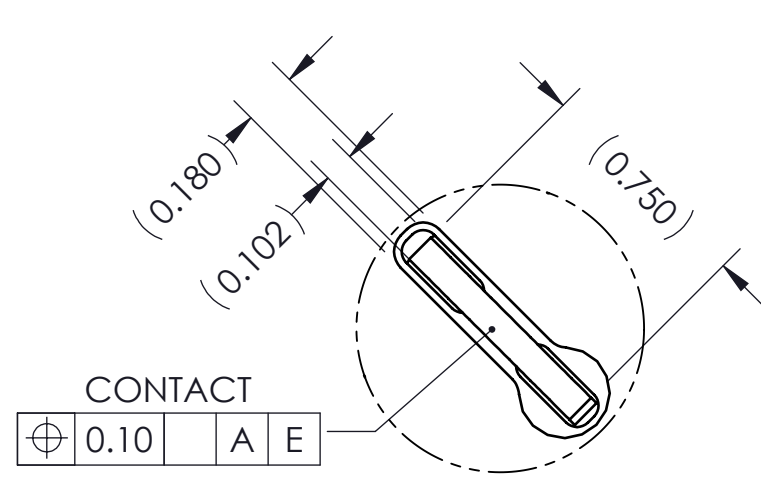


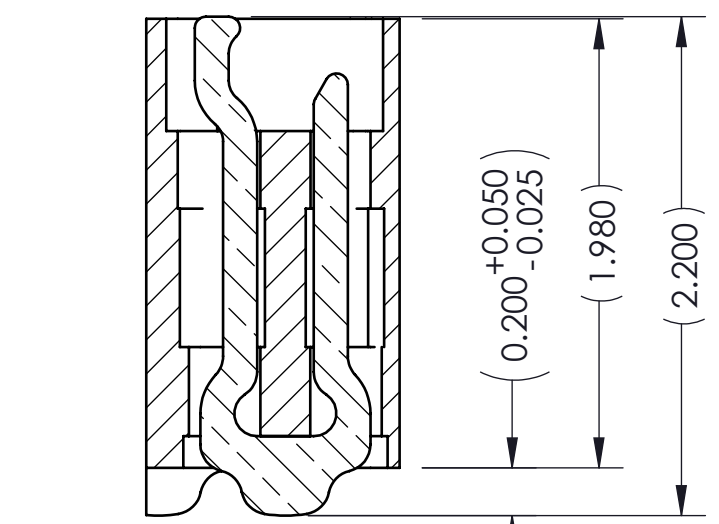
REV	ECO	BY	DESCRIPTION	APV	DATE
A	31546	RS	Initial Design	NSJ	09/15/14



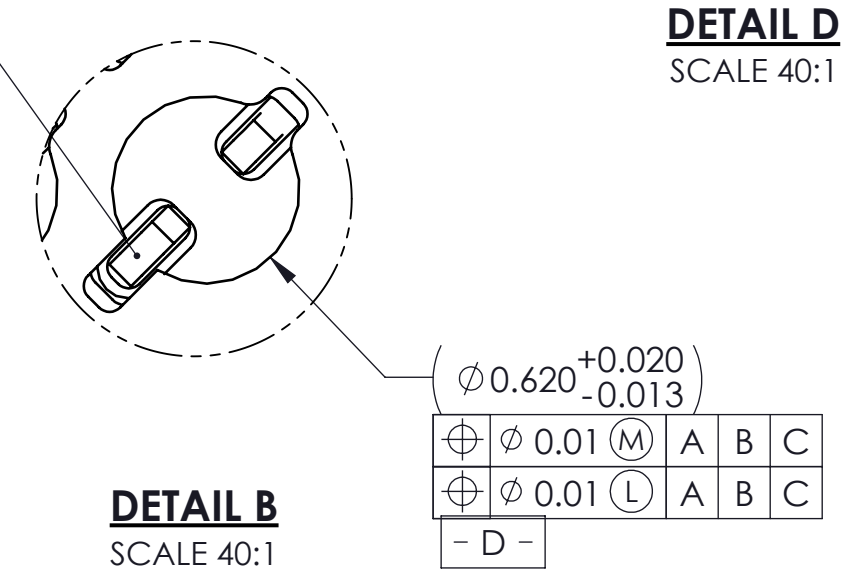
- Notes:
1. Dimension locates center of slot/contact.
  2. Unless otherwise noted, all features located  $\oplus 0.10$  A B C
  3. Reference HSI0 Technologies, LLC. specification 700001-0001 for solder attachment.
  4. Reference HSI0 Technologies specification 700001-0002 for application notes.
  5. - E - Center of contact pattern.
  6. All contact/slot not shown to minimize file size.
  8. Tooling marks permitted. Maximum 0.10 protrusion (shown).
  9. Dimension includes 0.10 protrusion.
  10. Datums - B - and - C - are determined by  $\phi 0.620$  opening in corner slots.



**DETAIL D**  
SCALE 40:1



**SECTION A-A**  
SCALE 30:1  
VIEW ROTATED 45° CCW



**DETAIL B**  
SCALE 40:1

PART NUMBER	DESCRIPTION
107206-0013	SCKT, 272G80 14.0X18.0-0.80
107207-0013	CS, 272G80 14.0X18.0-0.80
103864-0116	PRESS, DEVICE INSERTION 14.00X18.00 (SOLD SEPARATELY)
104553-0354	STENCIL FLEX, 272G80 14.0X18.0-0.80 (SOLD SEPARATELY)
105900-0004	EXTRACTION TOOL, 4X53 (SOLD SEPARATELY)

**HSIO technologies**  
PROPRIETARY AND CONFIDENTIAL

THE INFORMATION CONTAINED IN THIS DRAWING IS THE SOLE PROPERTY OF HSI0 TECHNOLOGIES, LLC. ANY REPRODUCTION IN PART OR AS A WHOLE WITHOUT THE WRITTEN PERMISSION OF HSI0 TECHNOLOGIES, LLC IS PROHIBITED.

UNLESS OTHERWISE SPECIFIED:

DIMENSIONS ARE IN MILLIMETERS

TOLERANCES:

ANGULAR: ± 1°

X.X ± 0.25

X.XX ± 0.10

X.XXX ± 0.050

INTERPRET GEOMETRIC TOLERANCING PER:

MATERIAL: SEE B.O.M

FINISH:

DO NOT SCALE DRAWING

NAME	DATE
DRAWN: RS	09/15/14
CHECKED: NSJ	09/15/14

LEGEND:

- △ NOTE CALLOUT
- ◻ REVISION CHANGE
- ITEM NUMBER

**HSIO TECHNOLOGIES, LLC.**  
13300 67th AVENUE NORTH  
MAPLE GROVE, MINNESOTA 55311  
763-447-6260

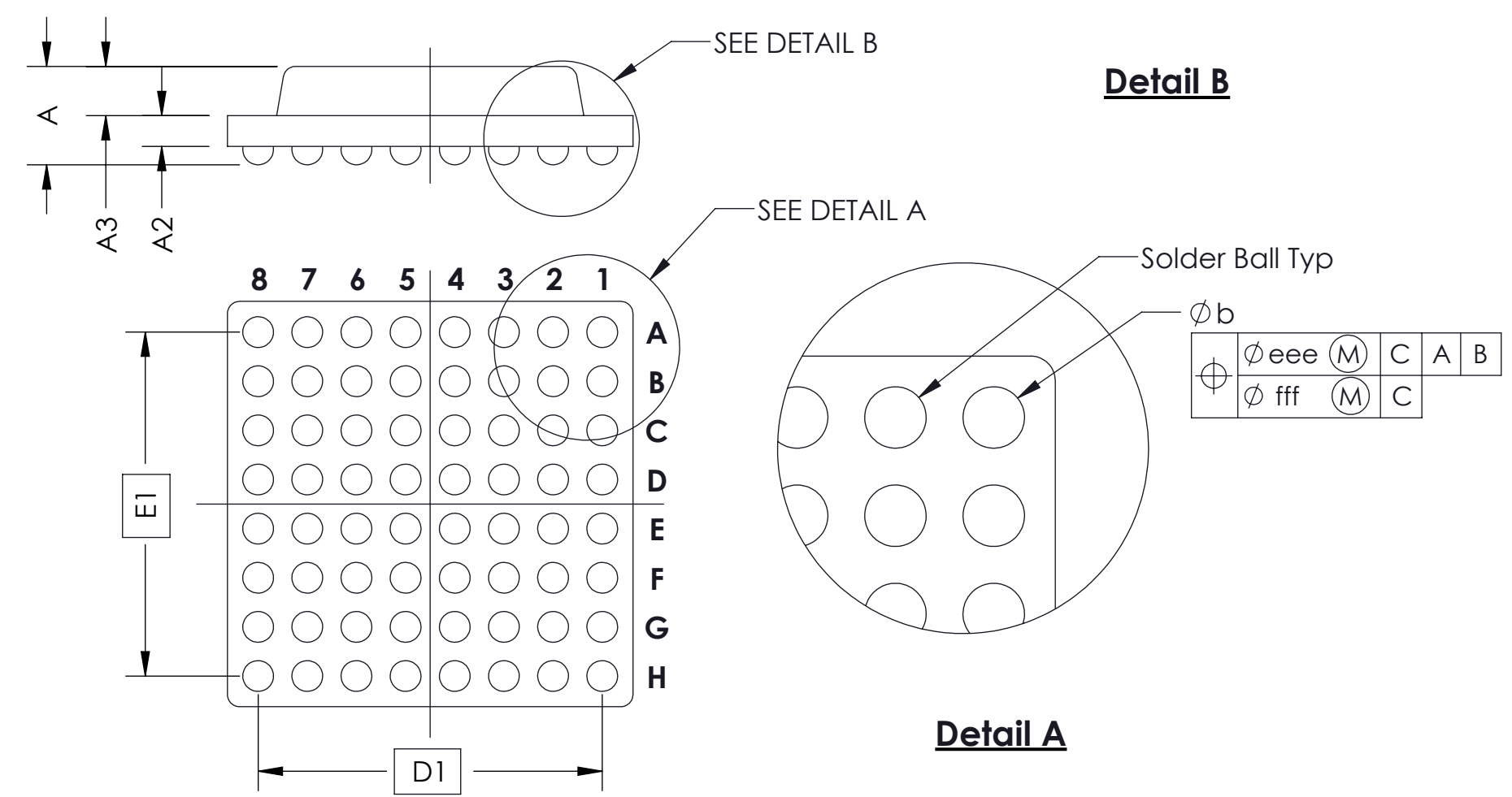
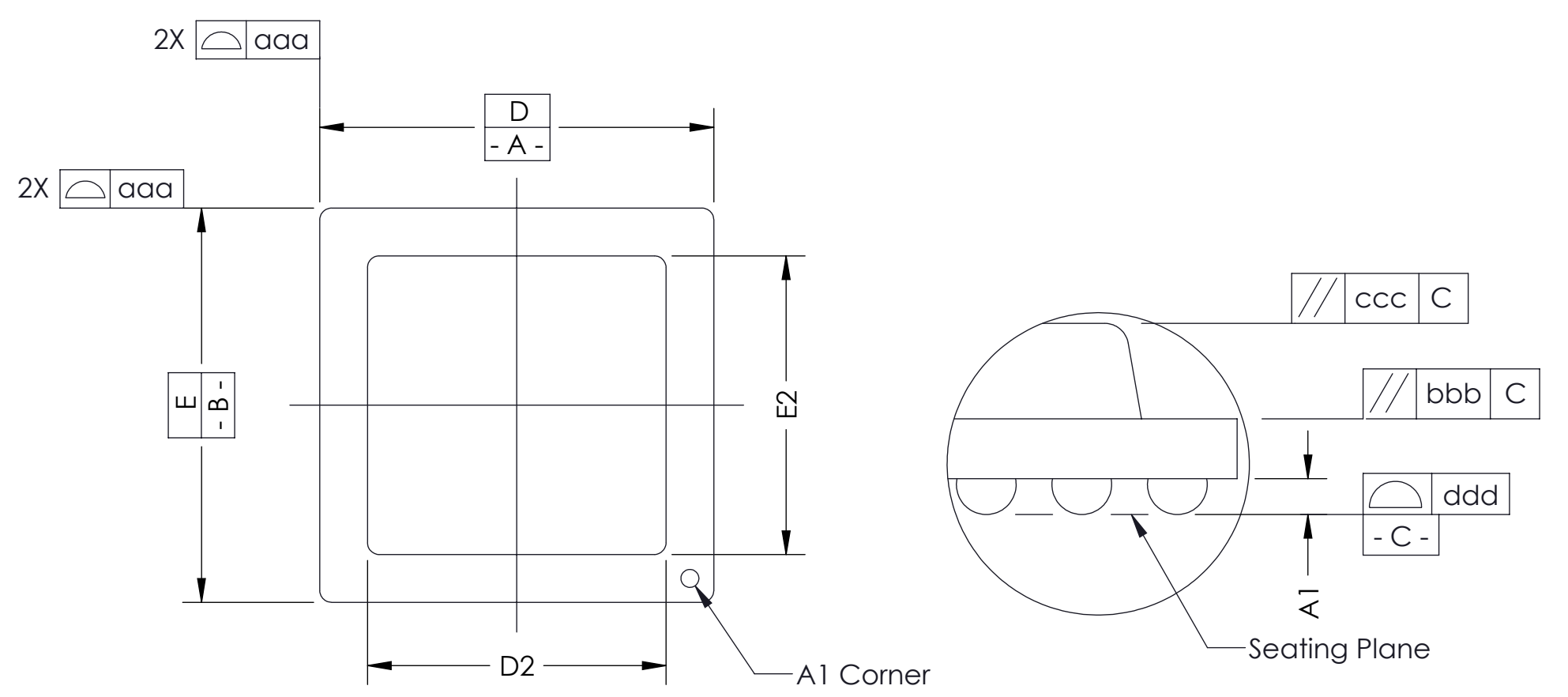
TITLE:  
SCKT, 272G80  
14.0X18.0-0.80

DWG. NO. 107206-0013

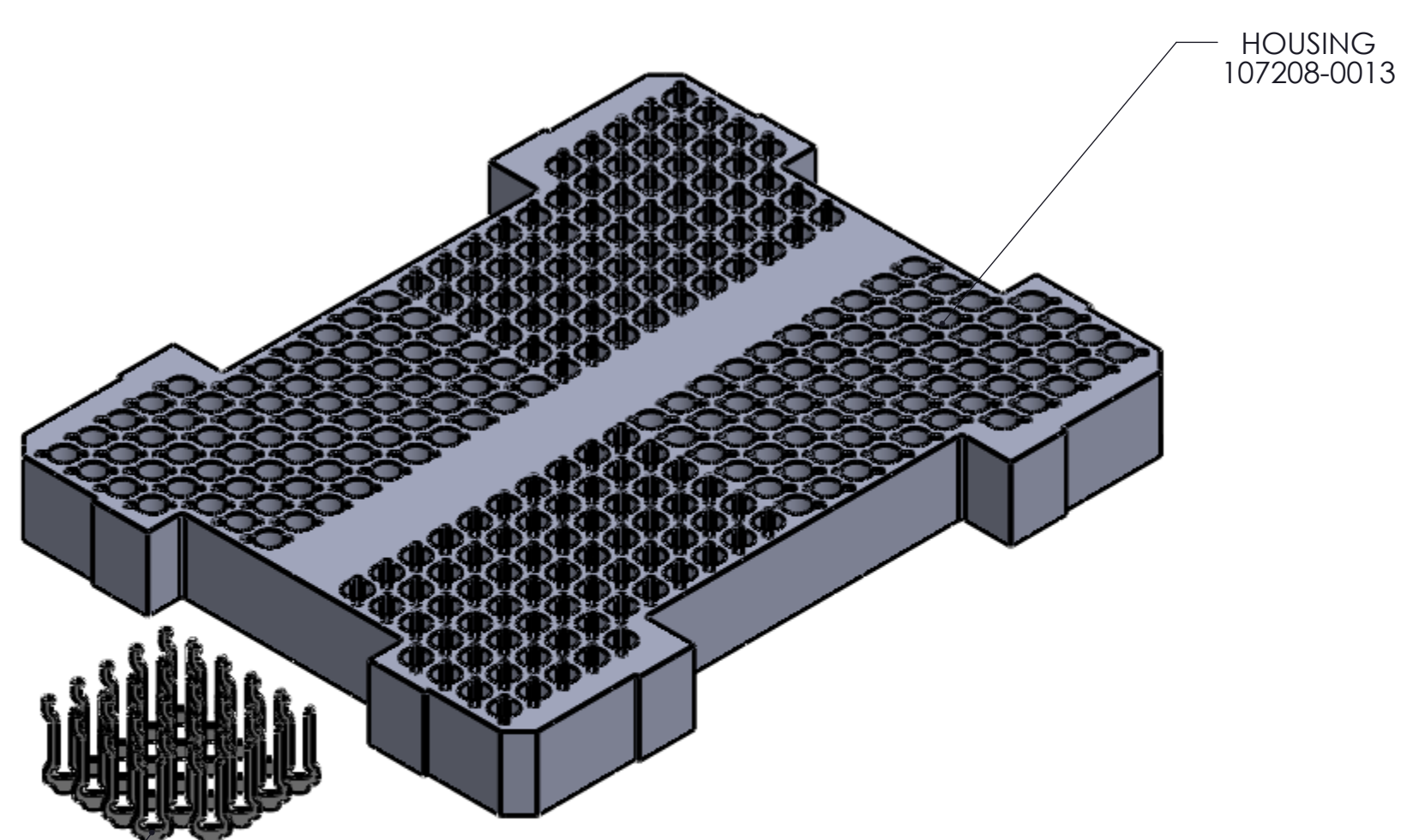
REV A

SCALE: 5:1 SIZE: C SHEET 1 OF 2

SOCKET FOR DEVICES THAT ARE WITHIN THESE SPECIFICATIONS				
Lead Count	<b>N</b>	272	Package Size	<b>D</b> 14.00
Columns	<b>ND</b>	14		<b>E</b> 18.00
Rows	<b>NE</b>	22	Ball Spacing	<b>D1</b> 12.000
Pitch	<b>e</b>	0.80		<b>E1</b> 16.800
Ball Size	<b>b</b>	0.55±0.05	Encapsulant/ Top Size	<b>D2</b> N/A
Total Thickness	<b>A</b>	1.13±0.10		<b>E2</b> N/A
Ball Height	<b>A1</b>	0.23 MIN	Pattern Style	IRREGULAR
Substrate Thickness	<b>A2</b>	0.90±0.10	Perimeter Rows	N/A
Top Thickness	<b>A3</b>		Center Array	N/A
Form Tolerances				
Edge	<b>aaa</b>	0.20	Bottom	<b>ddd</b> 0.15
Substrate	<b>bbb</b>	0.20	Position	<b>eee</b> 0.20
Top	<b>ccc</b>	0.20	Position	<b>fff</b> 0.10
* See footprint for pattern details. All dimensions are in millimeters.				



**Generic Representation with Full Grid Array**



CONTACT  
104468-0017

<p><b>HSIO technologies</b> PROPRIETARY AND CONFIDENTIAL</p> <p>THE INFORMATION CONTAINED IN THIS DRAWING IS THE SOLE PROPERTY OF HSIO TECHNOLOGIES, LLC. ANY REPRODUCTION IN PART OR AS A WHOLE WITHOUT THE WRITTEN PERMISSION OF HSIO TECHNOLOGIES, LLC IS PROHIBITED.</p>	UNLESS OTHERWISE SPECIFIED:	NAME	DATE	<b>HSIO TECHNOLOGIES, LLC.</b> 13300 67th AVENUE NORTH MAPLE GROVE, MINNESOTA 55311 763-447-6260	
	DIMENSIONS ARE IN MILLIMETERS	DRAWN	RS		09/15/14
	TOLERANCES:	CHECKED	NSJ	09/15/14	TITLE: SCKT, 272 G80 14.0X18.0-0.80
	ANGULAR: ± 1°	LEGEND:		DWG. NO. <b>107206-0013</b>	
X.X ±0.25	△ NOTE CALLOUT	REV			
X.XX ±0.10	◇ REVISION CHANGE	A			
X.XXX ±0.050	○ ITEM NUMBER	SCALE: 5:1			
INTERPRET GEOMETRIC TOLERANCING PER:	DO NOT SCALE DRAWING		SIZE: C	SHEET 2 OF 2	