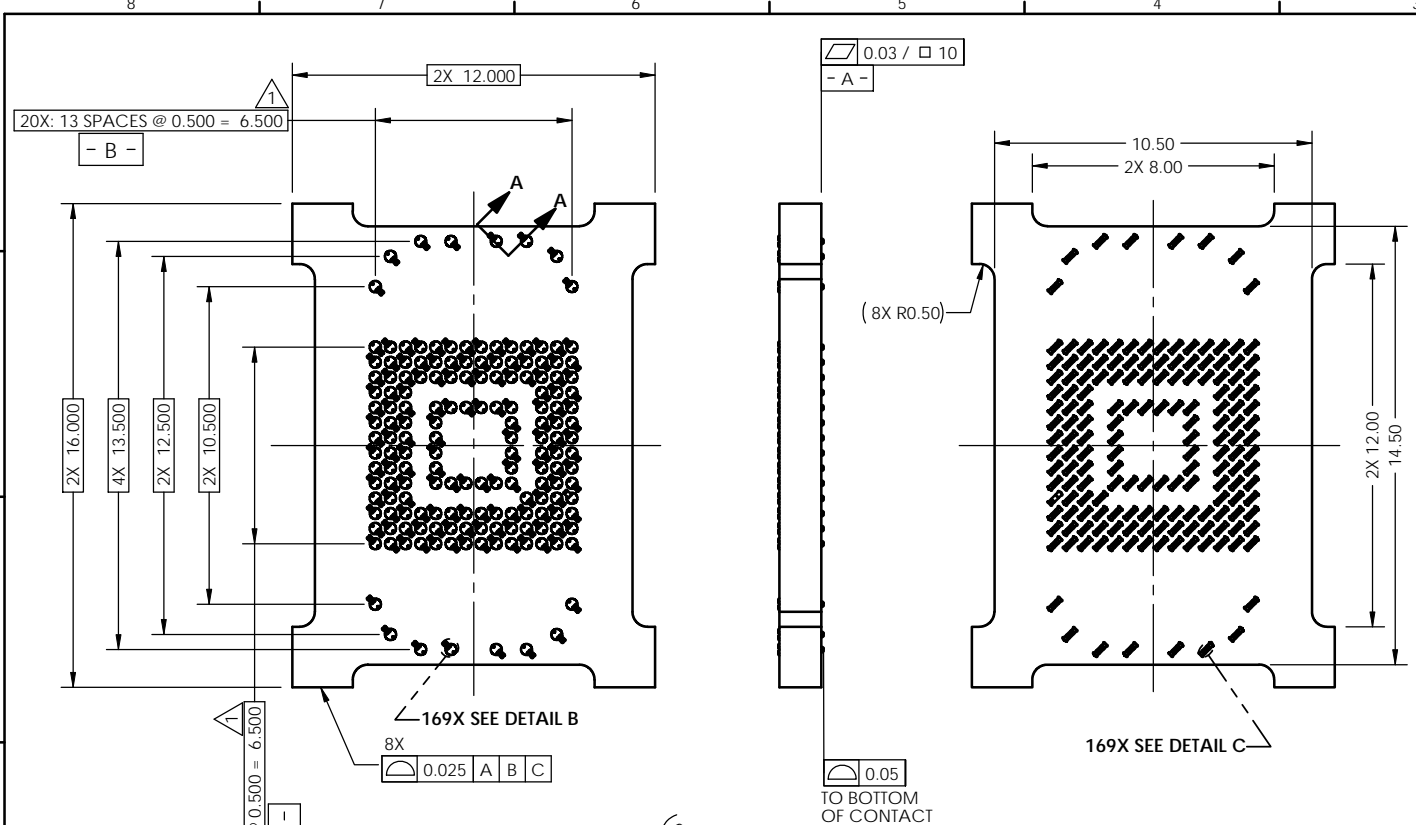
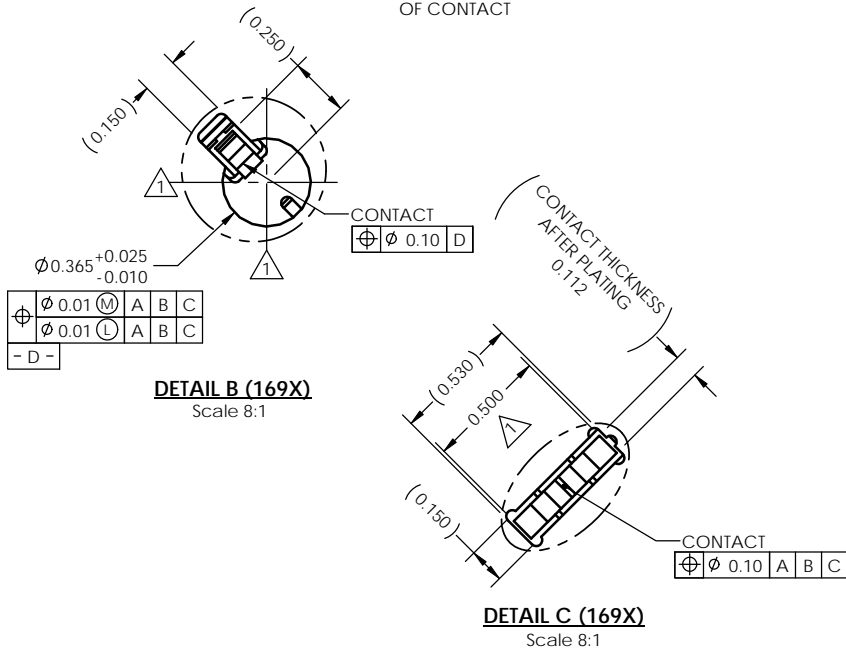
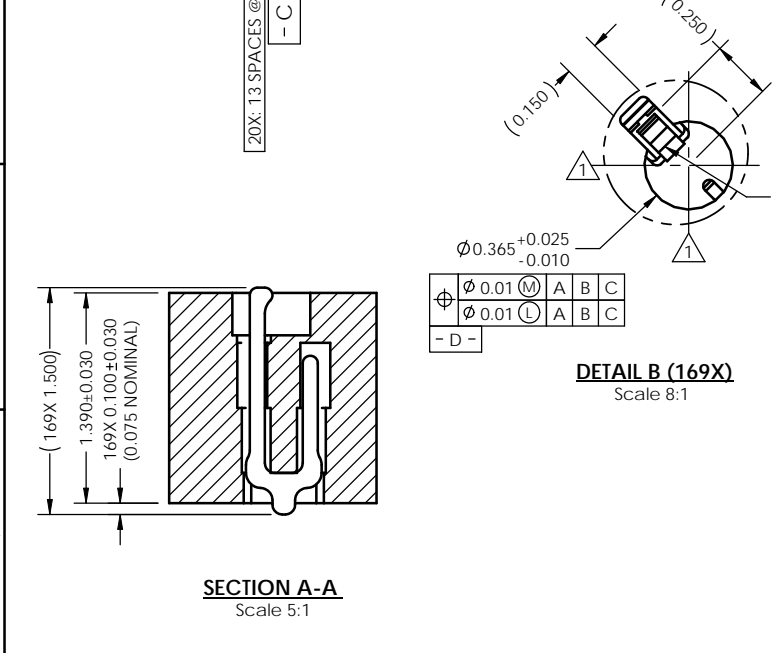


REV	ECO	BY	DESCRIPTION	APV	DATE
A	30557	MP	Initial Design	MP	09/10/10



- Notes:
- Dimension locates center of contact/slot.
 - Datums B and C are determined by $\varnothing 0.365$ openings on corner slots.



UNLESS OTHERWISE SPECIFIED DIMENSIONS ARE IN MILLIMETERS DIMS APPLY AFTER PLATING TOLERANCES UNLESS OTHERWISE NOTED:

ANGLES	DECIMALS	
±1°	XX	±0.25
	XXX	±0.10
	XXXX	±0.050

DRAWING APPROVALS		DATE	
DESIGN	C. Wymier	03/11/10	
APPROV	E. Turin	03/16/10	

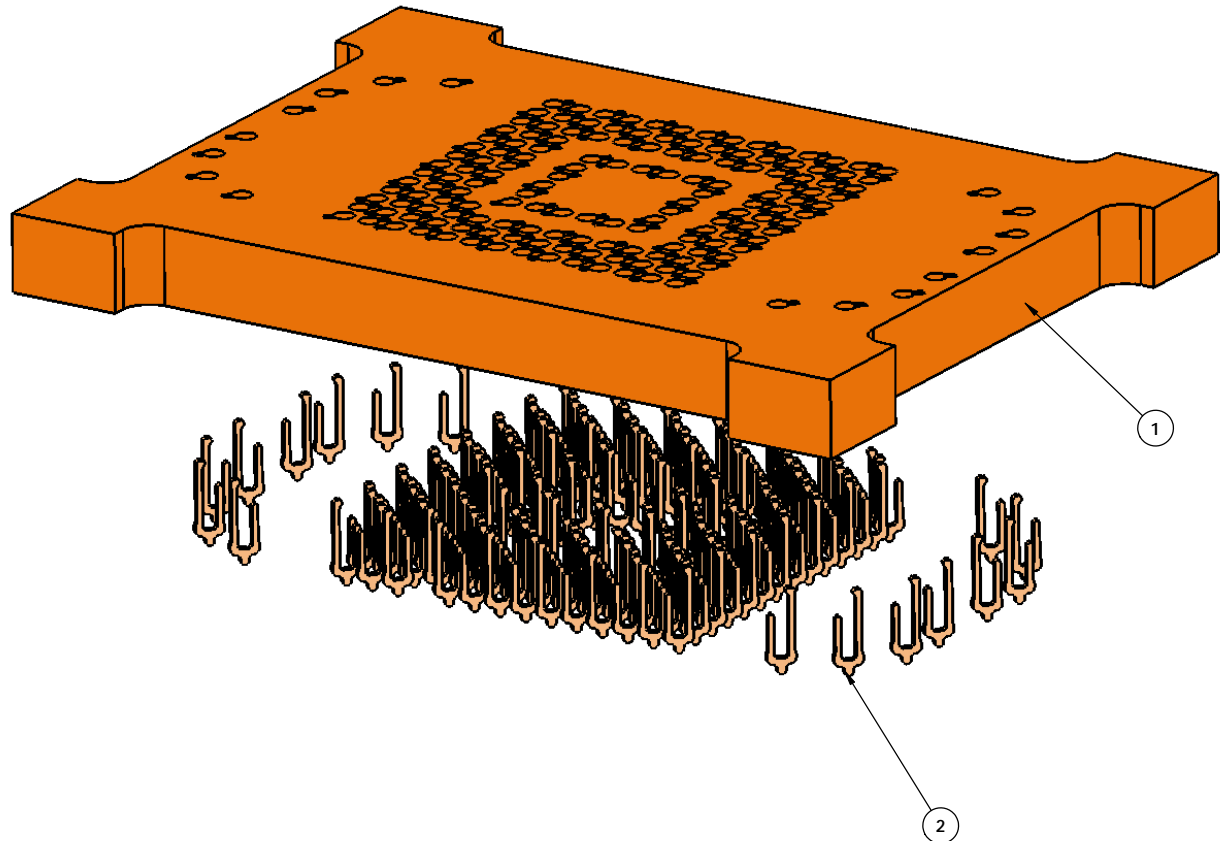
THIRD ANGLE PROJECTION

SCALE	CAD STANDARD	DESCRIPTION	REV
	SOLIDWORKS	107248-0009	A

SEE BOM

1 of 2

8 7 6 5 4 3 2 1



ITEM NUMBER	QTY.	PART NUMBER	DESCRIPTION
1	1	107247-0009	HSG, 169G40 12X16-0.50
2	169	104468-0015	CONTACT, GRY, HALF

THE INFORMATION CONTAINED IN THIS DRAWING IS THE SOLE PROPERTY OF CASCADE MICROTECH, INC.
 ANY REPRODUCTION IN PART OR WHOLE WITHOUT THE WRITTEN PERMISSION OF CASCADE MICROTECH, INC. IS PROHIBITED.

UNLESS OTHERWISE SPECIFIED
 - DIMENSIONS ARE IN MILLIMETERS
 - DIMS APPLY AFTER PLATING
 TOLERANCES UNLESS OTHERWISE NOTED: DECIMALS
 ANGLES X.X ±0.25
 X.XX ±0.10
 X.XXX ±0.050

7115 NORTHLAND TERRACE SUITE 400
 BROOKLYN PARK, MN 55428
 (763) 509-0066

CASCADE
 MICROTECH

**CS, 169G40 12X16-0.50
 W/O SOLDER BALLS**

LEGEND:
 (X) NOTE CALLOUT
 (A) REVISION CHANGE
 (X) ITEM NUMBER

DATE: C CAD FORMAT: SOLIDWORKS DRAWING: **107248-0009** REV: **A**

SCALE: MATERIAL: See Page 1 SHEET: 2 of 2

8 7 6 5 4 3 2 1