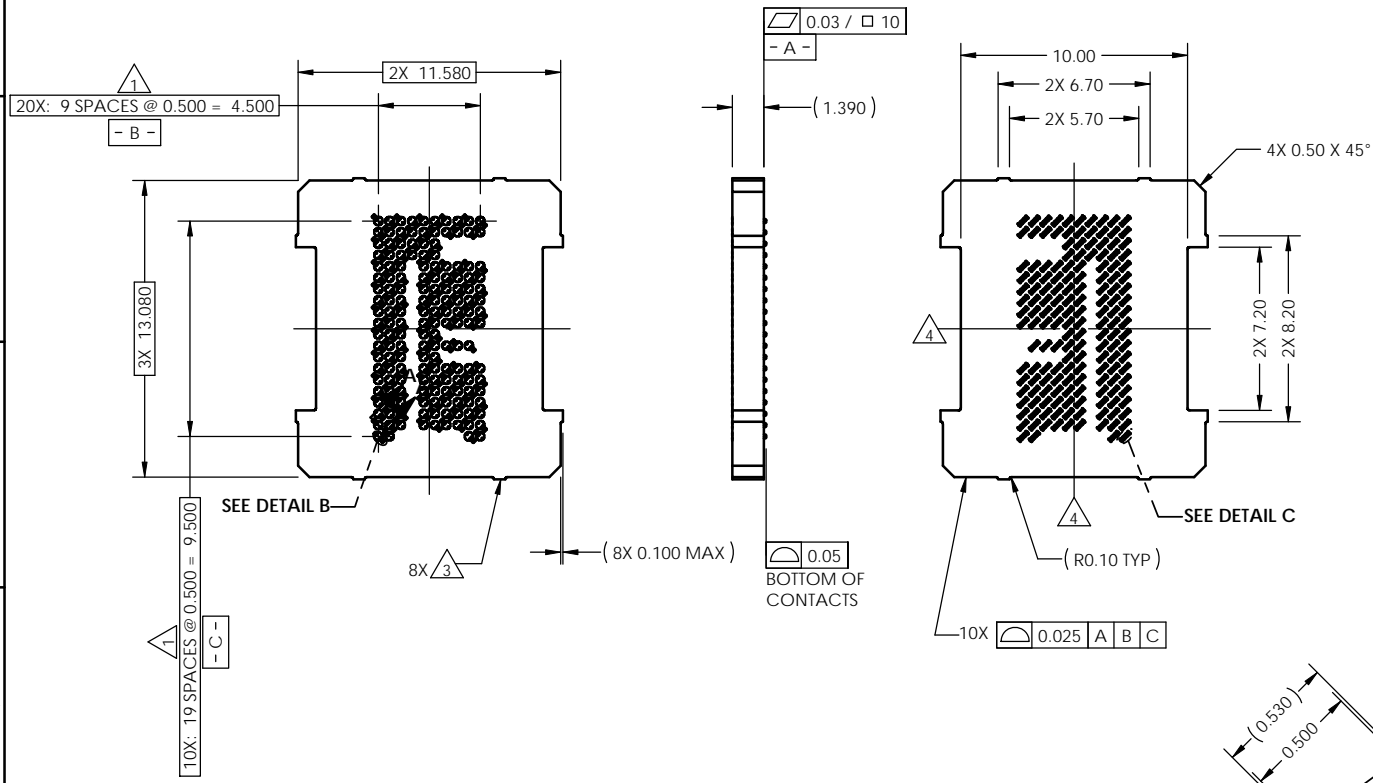
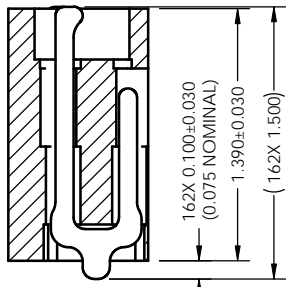


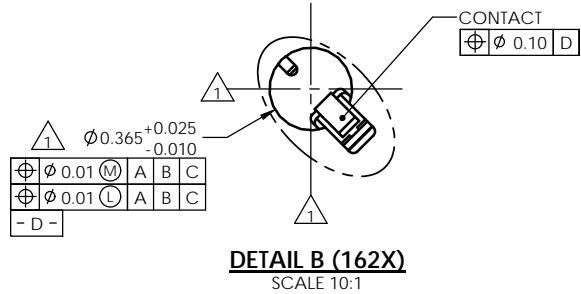
REV	ECO	BY	DESCRIPTION	APV	DATE
A	30742	SK	Initial Design	MP	03/22/11



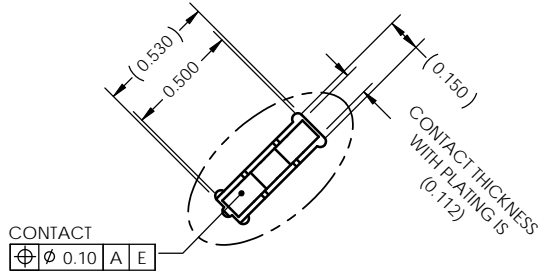
- Notes:
- 1 Dimension locates center of contact/slot.
 - 2. Datums **- B -** and **- C -** are determined by $\phi 0.365$ openings in corner slots.
 - 3 Tooling marks permitted. Maximum 0.10 protrusion (shown).
 - 4 **- E -** Center of contact pattern.



SECTION A-A
SCALE 8:1

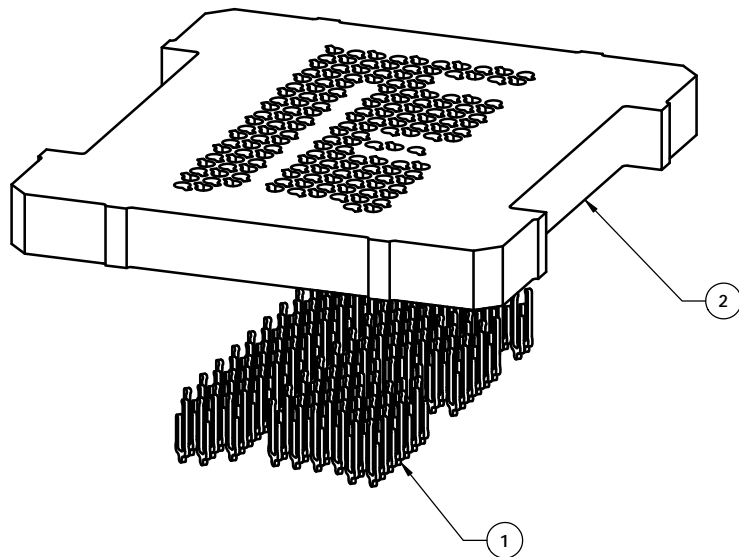


DETAIL B (162X)
SCALE 10:1



DETAIL C (162X)
SCALE 10:1

UNLESS OTHERWISE SPECIFIED DIMENSIONS ARE IN MILLIMETERS DIMS APPLY AFTER PLATING TOLERANCES UNLESS OTHERWISE NOTED		THE INFORMATION CONTAINED IN THIS DRAWING IS THE SOLE PROPERTY OF CASCADE MICROTECH, INC. ANY REPRODUCTION IN PART OR WHOLE WITHOUT THE WRITTEN PERMISSION OF CASCADE MICROTECH, INC. IS PROHIBITED.	
CAD GENERATED DRAWING DO NOT MANUALLY UPDATE		7115 NORTHLAND TERRACE SUITE 400 BROOKLYN PARK, MN 55428 (763) 509-0066	
DRAWING APPROVALS		CASCADIA MICROTECH	
DESIGN: S. Klanderud	DATE: 03/22/11	CS, 162G4011.5X13-0.50, W/O SOLDER BALLS	
APPROV: M. Peery	03/22/11		
LEGEND:	THIRD ANGLE PROJECTION	SCALE: C	SHEET: 1 of 2
NOTE CALLOUT		MATERIAL: SEE BOM	
REVISION CHANGE			
ITEM NUMBER			



ITEM NO.	QTY.	PART NUMBER	DESCRIPTION
1	162	104468-0015	CONTACT, GRYH, HALF
2	1	107247-0023	HSG, 162G4011.5X13-0.50

THE INFORMATION CONTAINED IN THIS DRAWING IS THE SOLE PROPERTY OF CASCADE MICROTECH, INC.
 ANY REPRODUCTION IN PART OR WHOLE WITHOUT THE WRITTEN PERMISSION OF CASCADE MICROTECH, INC. IS PROHIBITED.

UNLESS OTHERWISE SPECIFIED
 - DIMENSIONS ARE IN MILLIMETERS
 - DIMS APPLY AFTER PLATING
 TOLERANCES UNLESS OTHERWISE NOTED: DECIMALS
 ANGLES X.X ±0.25
 X.XX ±0.10
 X.XXX ±0.050

7115 NORTHLAND TERRACE SUITE 400
 BROOKLYN PARK, MN 55428
 (763) 509-0066

CASCADE
 MICROTECH, INC.

**CS, 162G4011.5X13-0.50,
 W/O SOLDER BALLS**

LEGEND:
 (X) NOTE CALLOUT
 (A) REVISION CHANGE
 (X) ITEM NUMBER

REV	CAD FORMAT	DRAWING NO.	REV
C	SOLIDWORKS	107248-0023	A
SCALE	MATERIAL	See Page 1	
2		2 of 2	