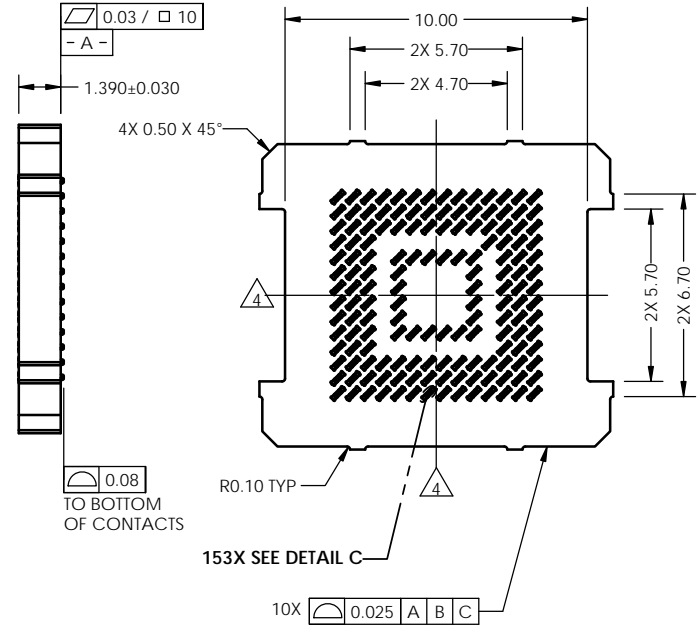
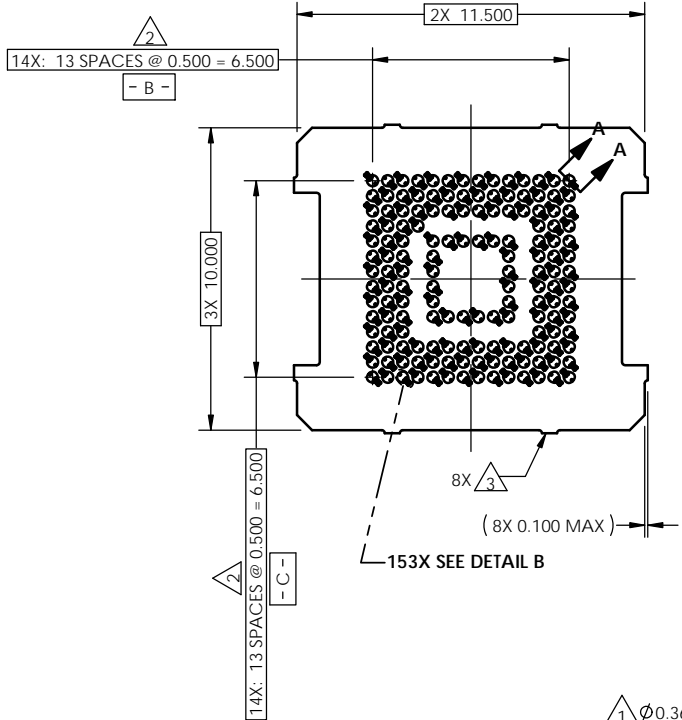
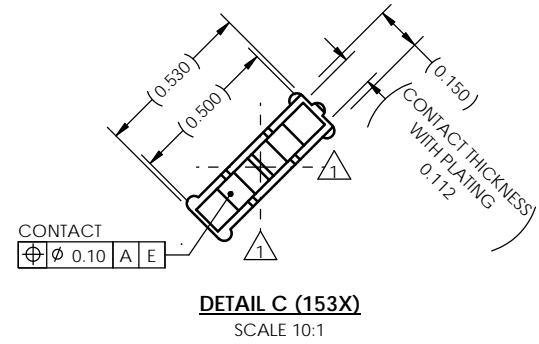
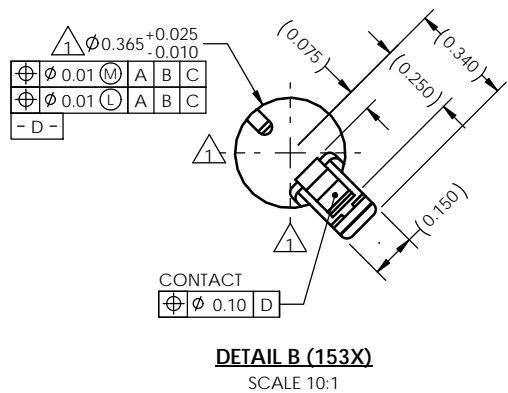
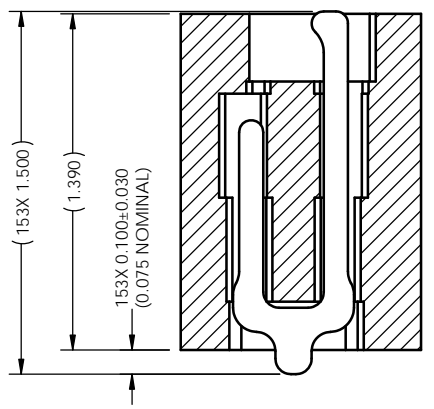


REV	ECO	BY	DESCRIPTION	APV	DATE
A	31287	AS	Initial Design	MP	05/02/13



- Notes:
- 1 Locates center of contact/ slot.
 - 2. Datums **- B -** and **- C -** are determined by $\phi 0.365$ features on corner slots.
 - 3 Tooling marks permitted. Maximum 0.10 protrusion (shown).
 - 4 **- E -** Center of contact pattern.



HSIO technologies
 PROPRIETARY AND CONFIDENTIAL
 THE INFORMATION CONTAINED IN THIS DRAWING IS THE SOLE PROPERTY OF HSIO TECHNOLOGIES, LLC. ANY REPRODUCTION IN PART OR AS A WHOLE WITHOUT THE WRITTEN PERMISSION OF HSIO TECHNOLOGIES, LLC IS PROHIBITED.

UNLESS OTHERWISE SPECIFIED:
 DIMENSIONS ARE IN MILLIMETERS
 TOLERANCES:
 ANGULAR ± 1°
 XX ± 0.25
 XXX ± 0.10
 XXXX ± 0.050

DRAWN	AS	05/02/13
CHECKED	MP	05/02/13

LEGEND:
 △ NOTE CALLOUT
 ○ REVISION CHANGE
 ○ ITEM NUMBER

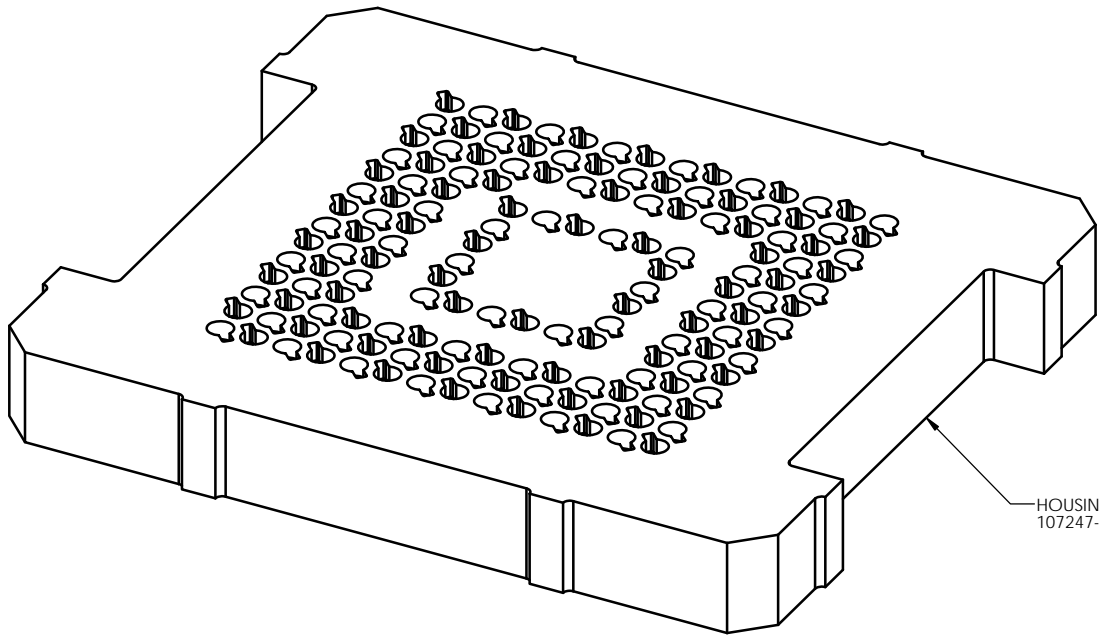
NAME	DATE
AS	05/02/13
MP	05/02/13

HSIO TECHNOLOGIES, LLC.
 13300 67th AVENUE NORTH
 MAPLE GROVE, MINNESOTA 55311
 763-447-6260

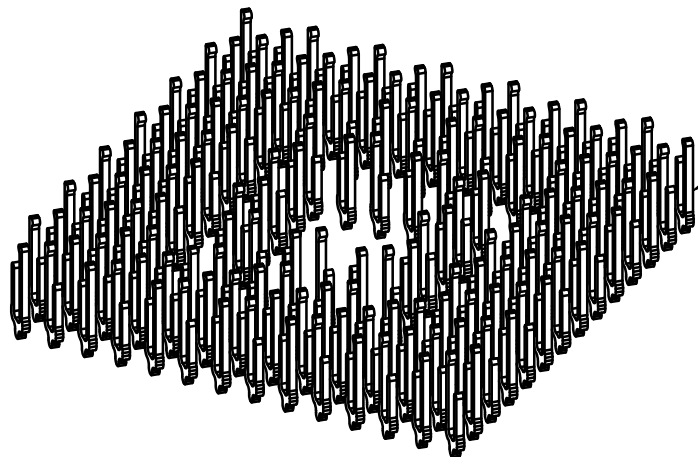
TITLE:
 CS, 153G4011.5X10-0.50, W/O
 SOLDER BALLS

DWG. NO.	REV
107248-0050	A

SCALE: 10:1 SIZE: C SHEET 1 OF 2



HOUSING
107247-0050



153X CONTACT
104468-0015

PROPRIETARY AND CONFIDENTIAL
THE INFORMATION CONTAINED IN THIS DRAWING IS THE SOLE PROPERTY OF HSIQ TECHNOLOGIES, LLC. ANY REPRODUCTION IN PART OR AS A WHOLE WITHOUT THE WRITTEN PERMISSION OF HSIQ TECHNOLOGIES, LLC IS PROHIBITED.


UNLESS OTHERWISE SPECIFIED:	NAME	DATE	HSIQ TECHNOLOGIES, LLC. 13300 67th AVENUE NORTH MAPLE GROVE, MINNESOTA 55311 763-447-6260
DIMENSIONS ARE IN MILLIMETERS	DRAWN	AS 05/02/13	
TOLERANCES: ANGULAR: ± 1° XX ±0.25 XXX ±0.10 X:XXX ±0.050	CHECKED	MP 05/02/13	

LEGEND:

△ NOTE CALLOUT

○ REVISION CHANGE

○ ITEM NUMBER



HSIQtechnologies

TITLE:

CS, 153G4011.5X10-0.50,
W/O SOLDER BALLS

DWG. NO.	REV
107248-0050	A

SCALE: 5:1 SIZE: C SHEET 2 OF 2