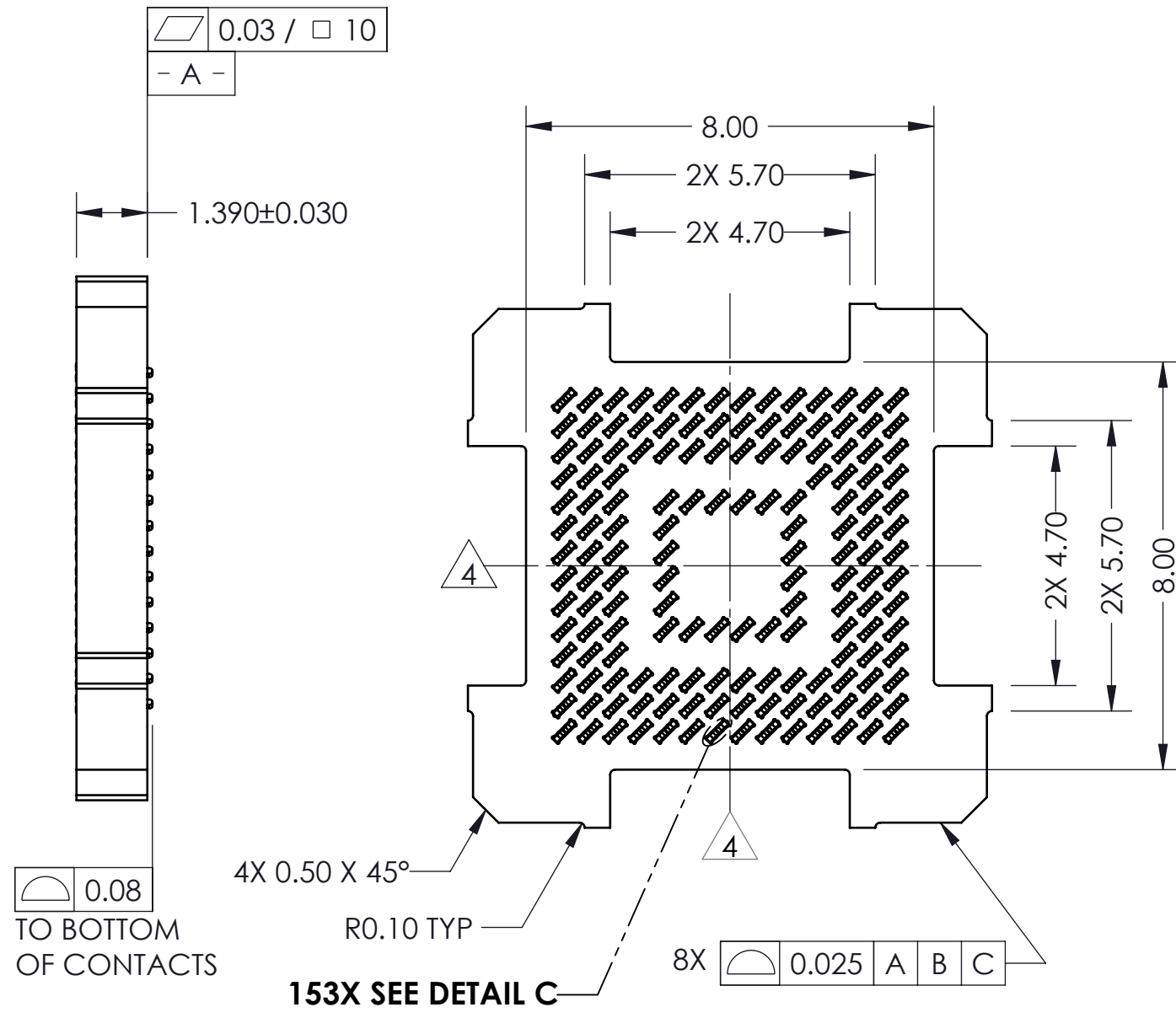
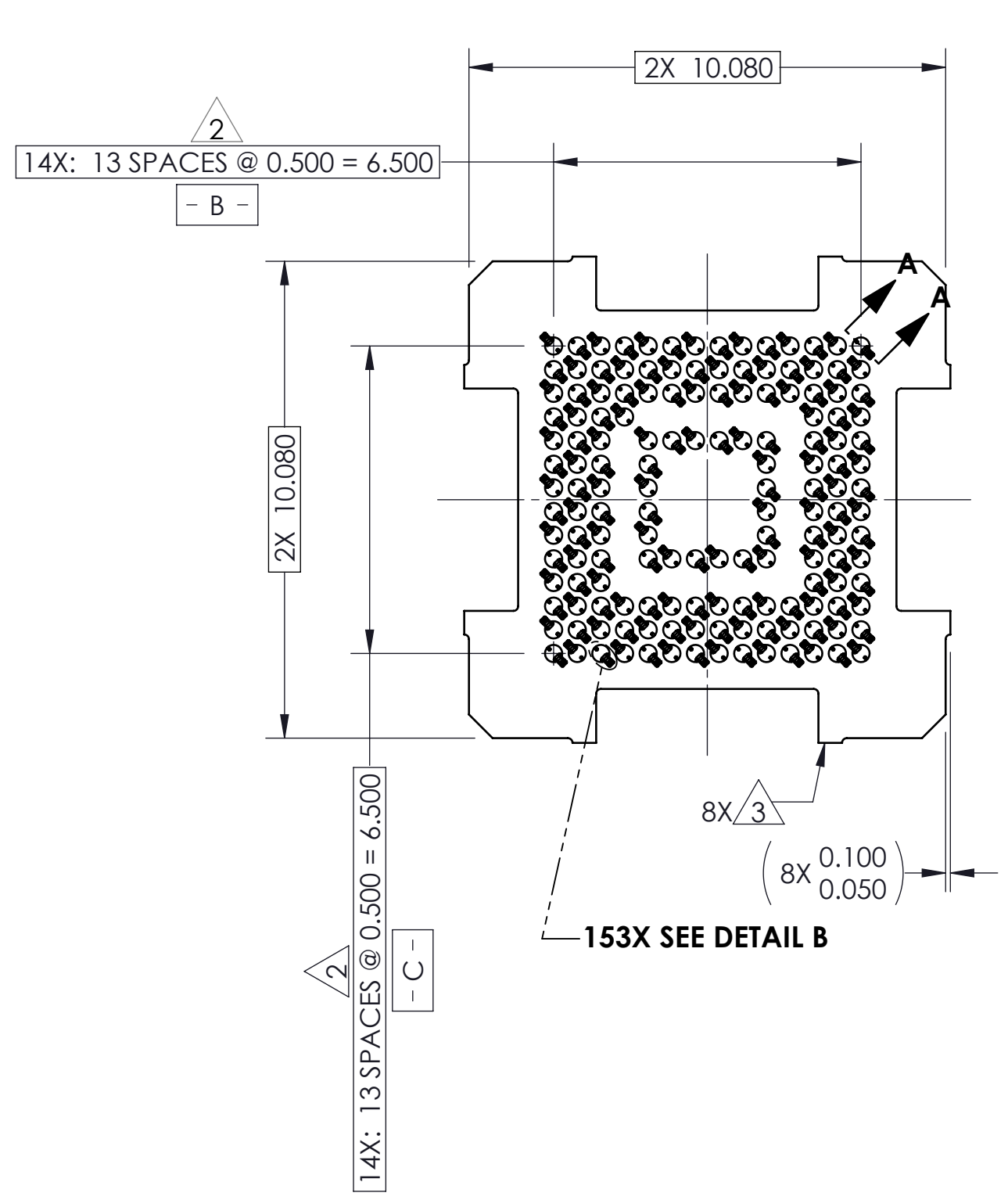
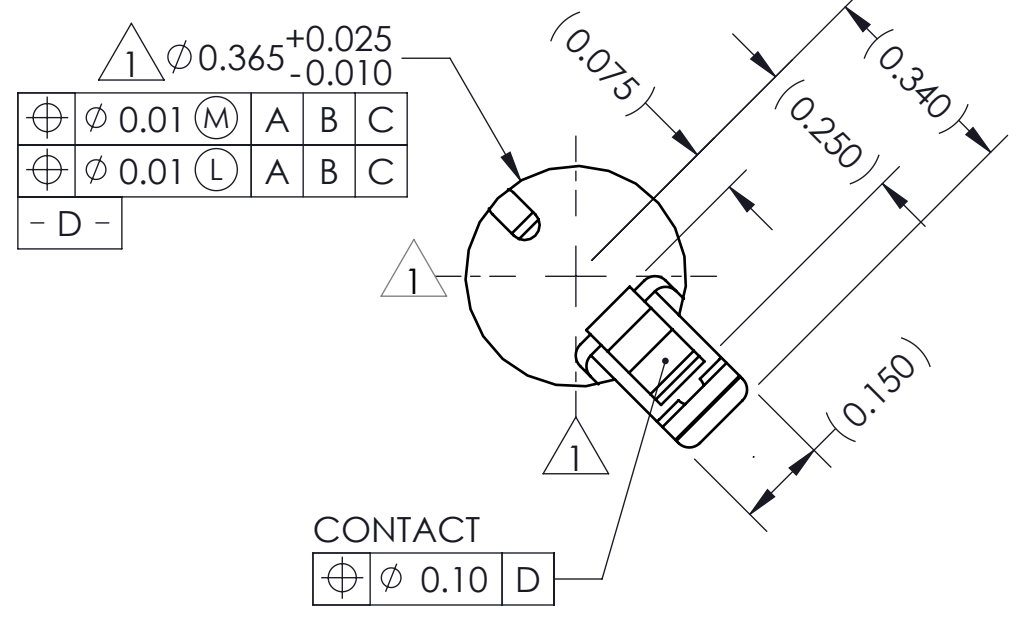


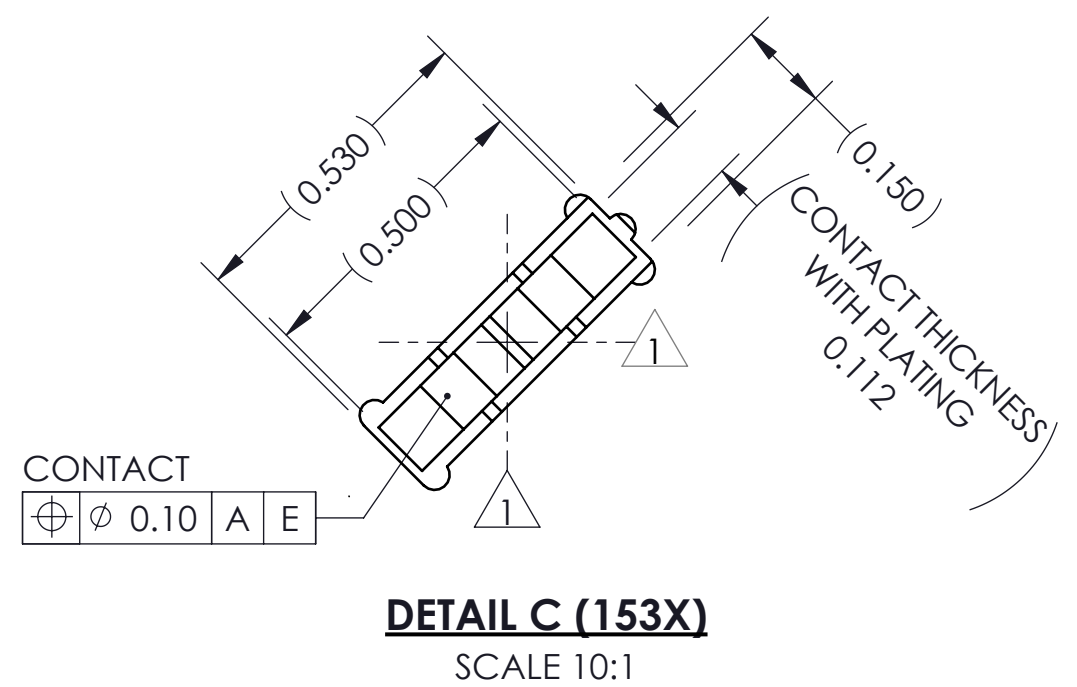
REV	ECO	BY	DESCRIPTION	APV	DATE
A	31419	AS	Initial Design	MP	11/11/13
B	FT	DJP	UPDATE TITLE BLOCK, TIE BAR TOL.	RS	3/2/21



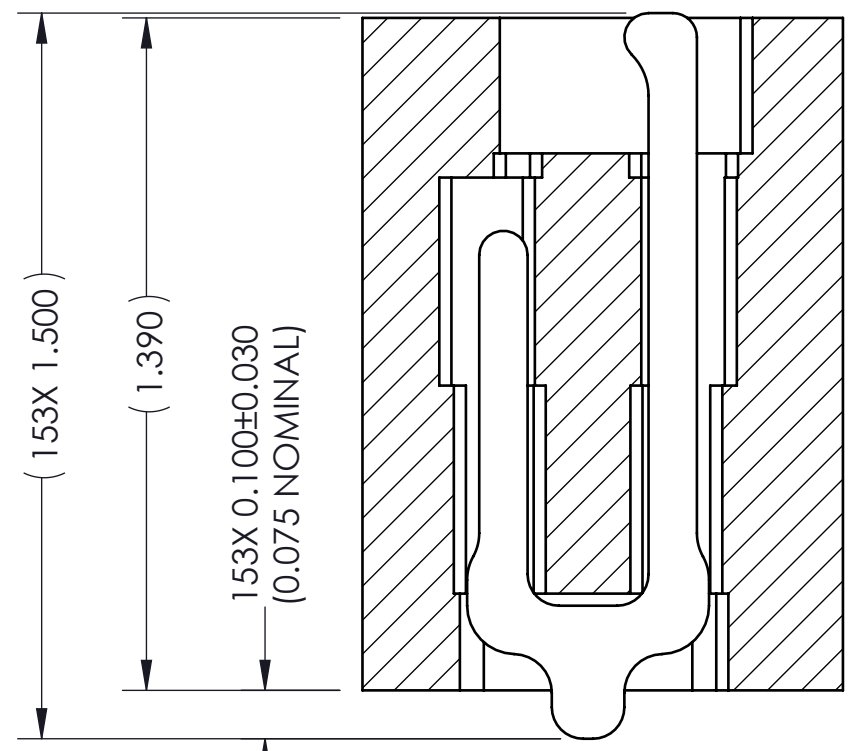
- Notes:
- 1 Locates center of contact/ slot.
 - 2. Datums - B - and - C - are determined by $\phi 0.365$ features on corner slots.
 - 3 Tooling marks permitted. Maximum 0.10 protrusion (shown).
 - 4 - E - Center of contact pattern.



DETAIL B (153X)
SCALE 10:1

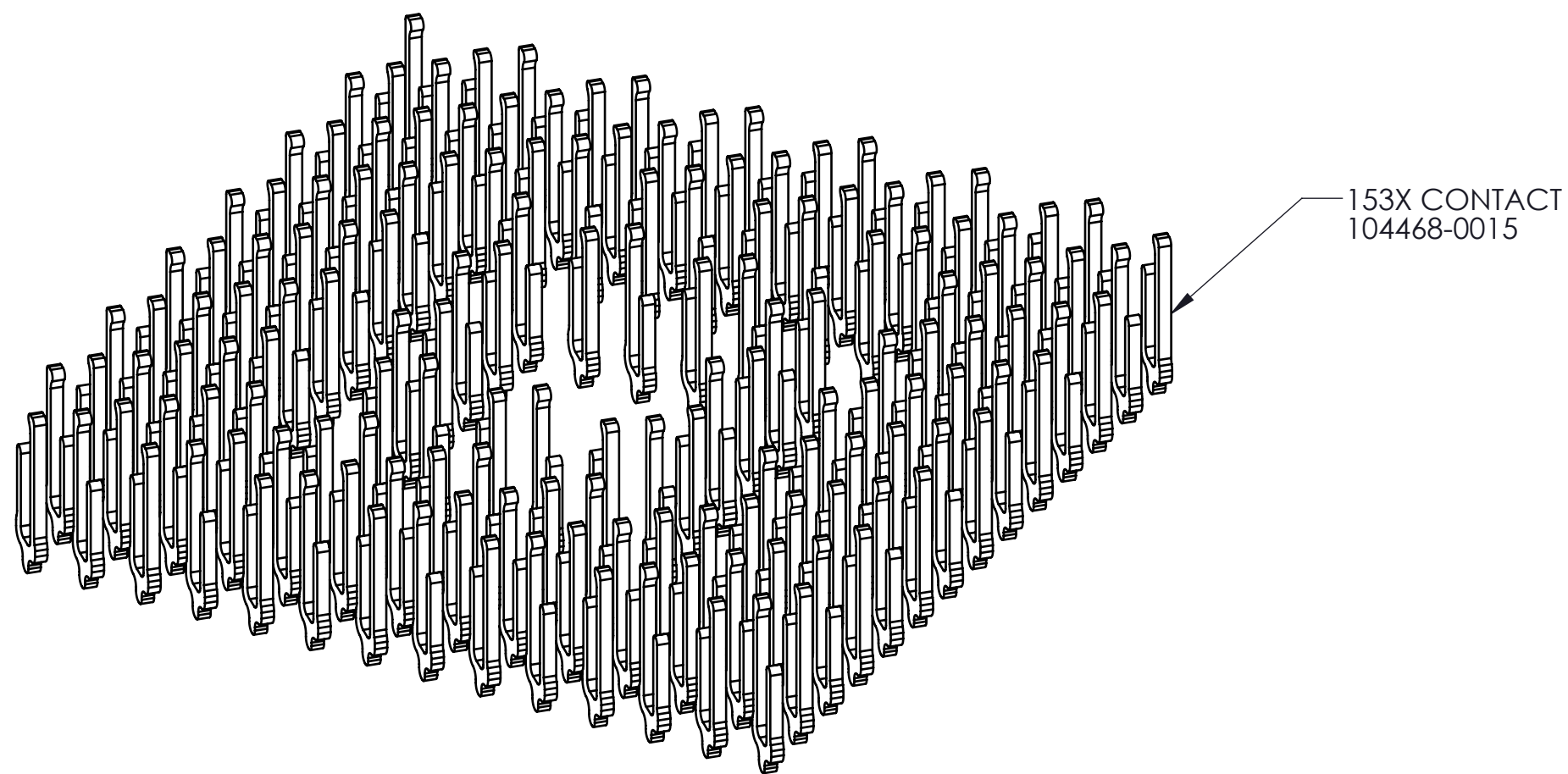
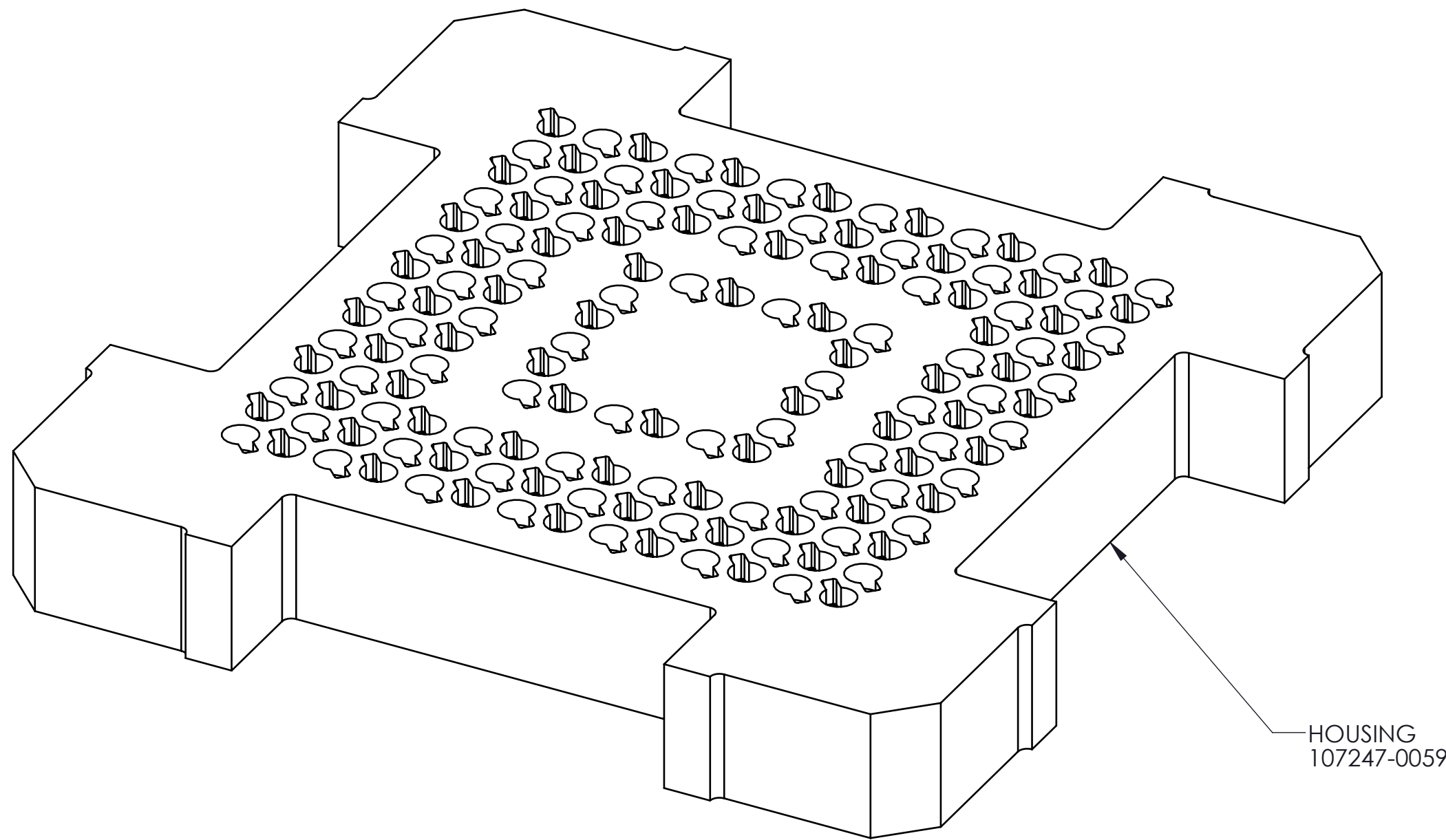



DETAIL C (153X)
SCALE 10:1



SECTION A-A
SCALE 8:1

<p>PROPRIETARY AND CONFIDENTIAL</p> <p>THE INFORMATION CONTAINED IN THIS DRAWING IS THE SOLE PROPERTY OF IRONWOOD ELECTRONICS, INC. ANY REPRODUCTION IN PART OR AS A WHOLE WITHOUT THE WRITTEN PERMISSION OF IRONWOOD ELECTRONICS, INC IS PROHIBITED.</p>	UNLESS OTHERWISE SPECIFIED:	NAME	DATE	IRONWOOD ELECTRONICS, INC. 1335 EAGANDALE COURT EAGAN, MINNESOTA 55121 952-229-8200	
	DIMENSIONS ARE IN MILLIMETERS	DRAWN	AS		11/28/2019
	TOLERANCES:	CHECKED	MP	11/11/13	TITLE: CS, 153G4010-0.50, W/O SOLDER BALLS
	ANGULAR: $\pm 1^\circ$	LEGEND:		DWG. NO.	
X.X ± 0.25	\triangle NOTE CALLOUT	107248-0059	B	SCALE: 10:1 SIZE: C SHEET 1 OF 2	
X.XX ± 0.10	\square REVISION CHANGE				
X.XXX ± 0.050	\circ ITEM NUMBER				
DO NOT SCALE DRAWING					



PROPRIETARY AND CONFIDENTIAL				
THE INFORMATION CONTAINED IN THIS DRAWING IS THE SOLE PROPERTY OF IRONWOOD ELECTRONICS, INC. ANY REPRODUCTION IN PART OR AS A WHOLE WITHOUT THE WRITTEN PERMISSION OF IRONWOOD ELECTRONICS, INC IS PROHIBITED.				
UNLESS OTHERWISE SPECIFIED:	NAME	DATE	IRONWOOD ELECTRONICS, INC. 1335 EAGANDALE COURT EAGAN, MINNESOTA 55121 952-229-8200	
DIMENSIONS ARE IN MILLIMETERS	DRAWN	AS		11/28/2019
TOLERANCES:	CHECKED	MP	11/11/13	
ANGULAR: ± 1°			TITLE:	
X.X ±0.25			CS, 153G4010-0.50, W/O SOLDER BALLS	
X.XX ±0.10			DWG. NO.	REV
X.XXX ±0.050			107248-0059	B
LEGEND:	SCALE: 5:1	SIZE: C	SHEET 2 OF 2	
△ NOTE CALLOUT				
◊ REVISION CHANGE				
○ ITEM NUMBER				