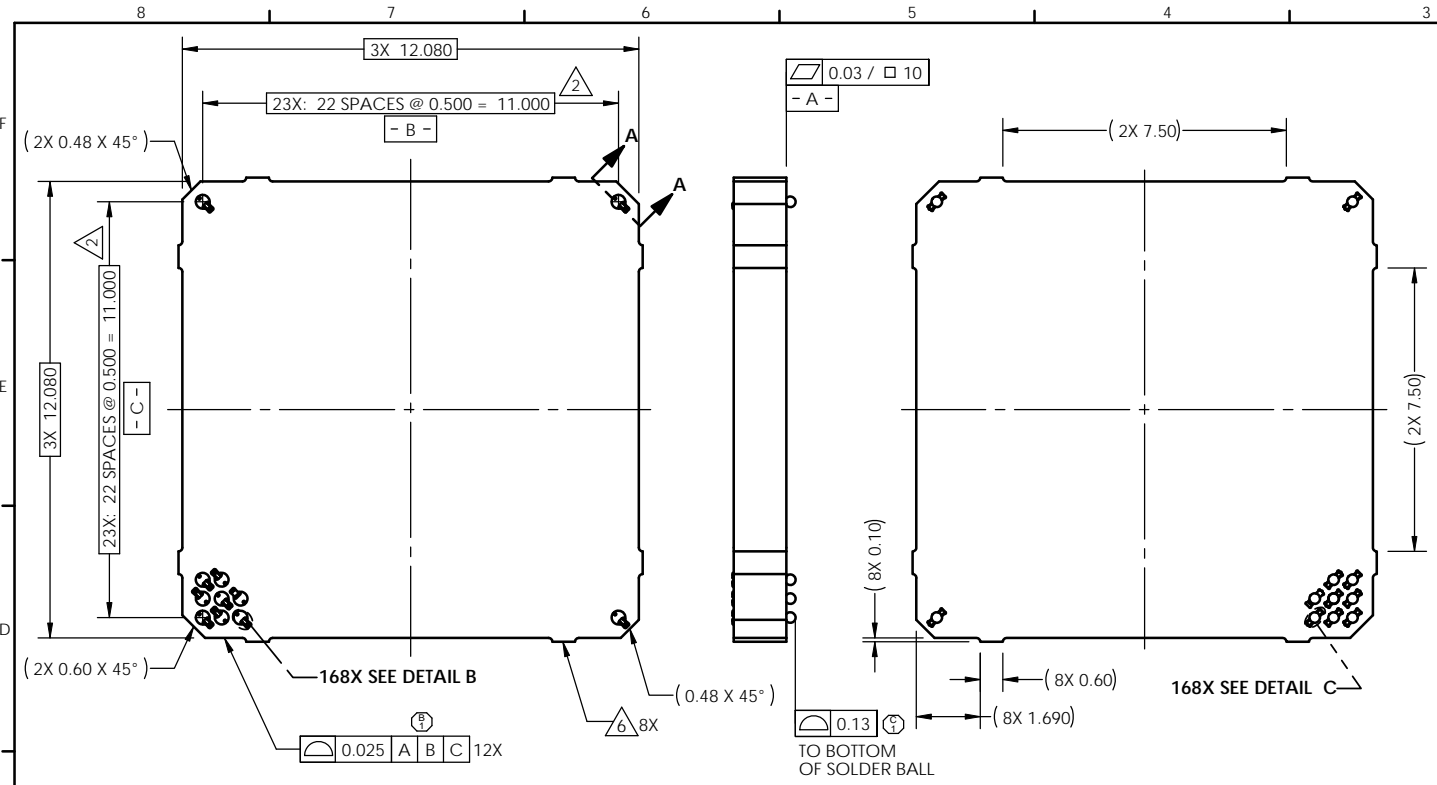
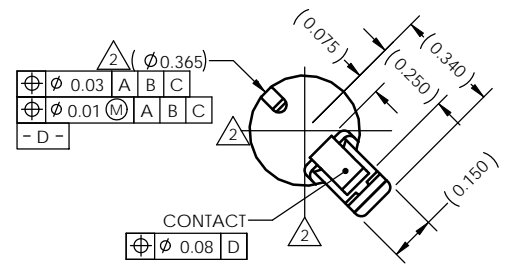


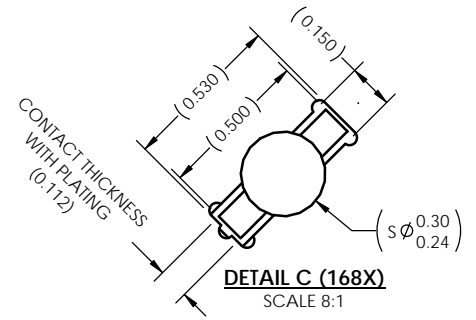
REV	ECO	BY	DESCRIPTION	APV	DATE
A	--	AH	Initial Design	MC	11/04/09
B	--	AH	1) Added datums	MC	11/18/09
C	--	AS	Added tooling marks to housing and added note 6	MC	11/30/09
D	30944	JJN	1) Profile 0.13 Was 0.08	KDW	11/09/11



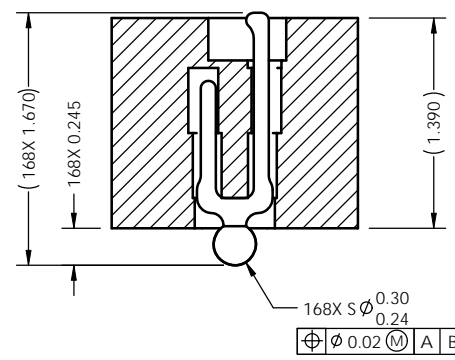
- Notes:
- Reference Cascade Microtech specification 103862-0001 for solder attachment.
 - Dimension locates center of contact/ slot.
 - Reference Cascade Microtech specification 103863-0001 for application notes.
 - Footprint part number is 104311-0150.
 - Datums B and C are determined by $\phi 0.365$ features on corner slots.
 - Tooling marks permitted. Maximum 0.10 protrusion (shown).



DETAIL B (168X)
SCALE 8:1



DETAIL C (168X)
SCALE 8:1



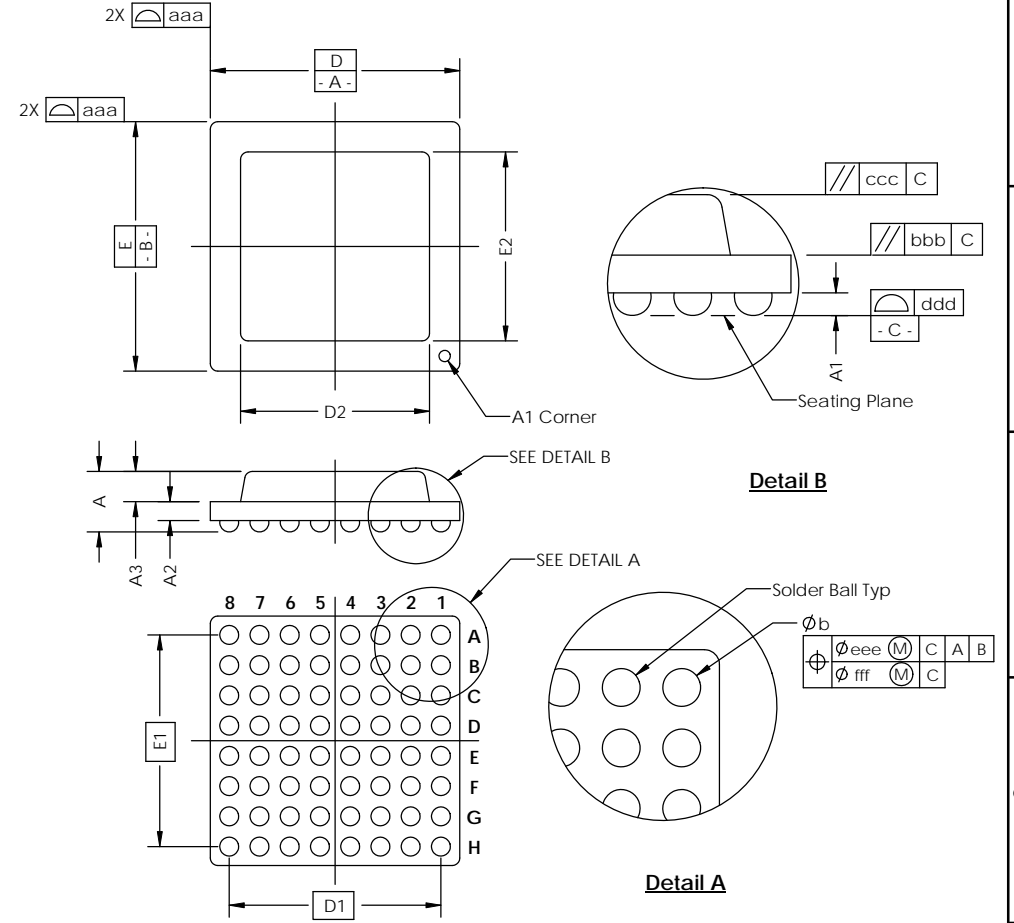
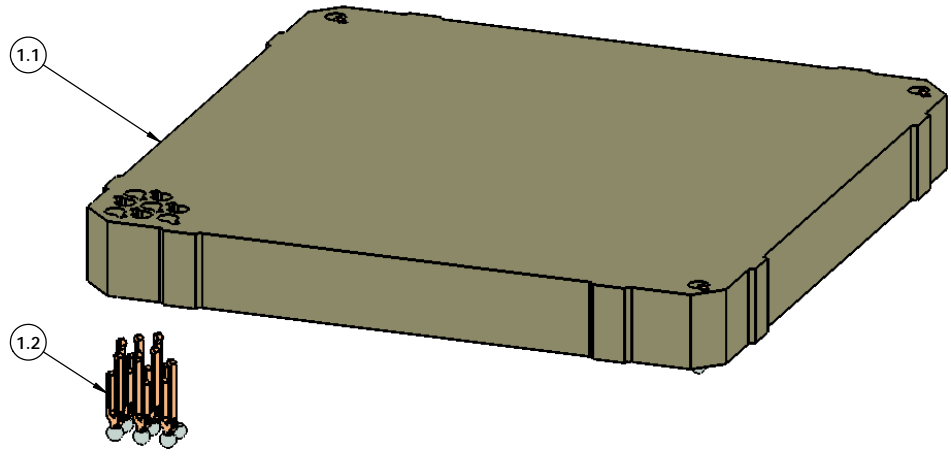
SECTION A-A
SCALE 4:1

Parts List			
Item	Qty	Part Number	Description
-	-	107250-0001	SCKT, 168G40 12-0.50
-	-	103864-0002	PRESS, DEVICE INSERT, GRYP 12X12 (SOLD SEPARATELY)
-	-	105900-0004	EXTRACTION TOOL, 4 X 53 (SOLD SEPARATELY)
1	1	107249-0001	CS, 168G40 12-0.50 W/SOLDER BALLS
1.1	1	107247-0001	HSG, 168G40 12-0.50
1.2	168	104468-0015	CONTACT, G40, $\phi 0.30$, TIN, 0.1016

UNLESS OTHERWISE SPECIFIED DIMENSIONS ARE IN MILLIMETERS DIM'S APPLY AFTER PLATING TOLERANCES UNLESS OTHERWISE NOTED:		THE INFORMATION CONTAINED IN THIS DRAWING IS THE SOLE PROPERTY OF CASCADE MICROTECH, INC. ANY REPRODUCTION IN PART OR WHOLE WITHOUT THE WRITTEN PERMISSION OF CASCADE MICROTECH, INC. IS PROHIBITED.	
ANGLES: ±1°		CAD GENERATED DRAWING DO NOT MANUALLY UPDATE	
DRAWING APPROVALS		7115 NORTHLAND TERRACE SUITE 400 BROOKLYN PARK, MN 55428 (763) 509-0066	
DESIGN: A. Hawkins	DATE: 11/04/09	SCKT, 168G4012-0.50 W/ SOLDER BALLS	
APP'D: M. Cavegn	DATE: 11/04/09		
THIRD ANGLE PROJECTION		SCALE: C	SHEET: D
LEGEND:		SEE BOM	
(A) NOTE CALLOUT	(R) REVISION CHANGE	1 of 2	
(X) ITEM NUMBER			

SOCKET FOR DEVICES THAT ARE WITHIN THESE SPECIFICATIONS					
Lead Count	N	168	Package Size	D	12.00
Columns	ND	23		E	12.00
Rows	NE	23	Ball Spacing	D1	11.000
Pitch	e	0.50		E1	11.000
Ball Size	b	0.30±0.05	Encapsulant/ Top Size	D2	n/a
Total Thickness	A	n/a		E2	n/a
Ball Height	A1	0.225 MIN	Pattern Style	Perimeter*	
Substrate Thickness	A2	n/a	Perimeter Rows	2	
Top Thickness	A3		Center Array	n/a	
Form Tolerances					
Edge	aaa	0.10	Bottom	ddd	0.08
Substrate	bbb	0.10	Position	eee	0.15
top	ccc	0.10	Position	fff	0.05

All dimensions are in millimeters.
* See footprint for pattern details.



Generic Representation with Full Grid Array

<small>THE INFORMATION CONTAINED IN THIS DRAWING IS THE SOLE PROPERTY OF CASCADE MICROTECH, INC. ANY REPRODUCTION IN PART OR WHOLE WITHOUT THE WRITTEN PERMISSION OF CASCADE MICROTECH, INC. IS PROHIBITED.</small>			
<small>UNLESS OTHERWISE SPECIFIED - DIMENSIONS ARE IN MILLIMETERS - DIMS APPLY AFTER PLATING TOLERANCES UNLESS OTHERWISE NOTED:</small>	<small>DECIMALS X.X ±0.25 X.XX ±0.10 X.XXX ±0.050</small>	7115 NORTHLAND TERRACE SUITE 400 BROOKLYN PARK, MN 55428 (763) 509-0066	
SCKT, 168G4012-0.50 W/SOLDER BALLS		<small>REV</small> D	<small>DATE</small> 107250-0001
<small>LEGEND:</small> NOTE CALLOUT REVISION CHANGE ITEM NUMBER	<small>SCALE</small> See Page 1	<small>MATERIAL</small> 	<small>SHEET</small> 2 of 2