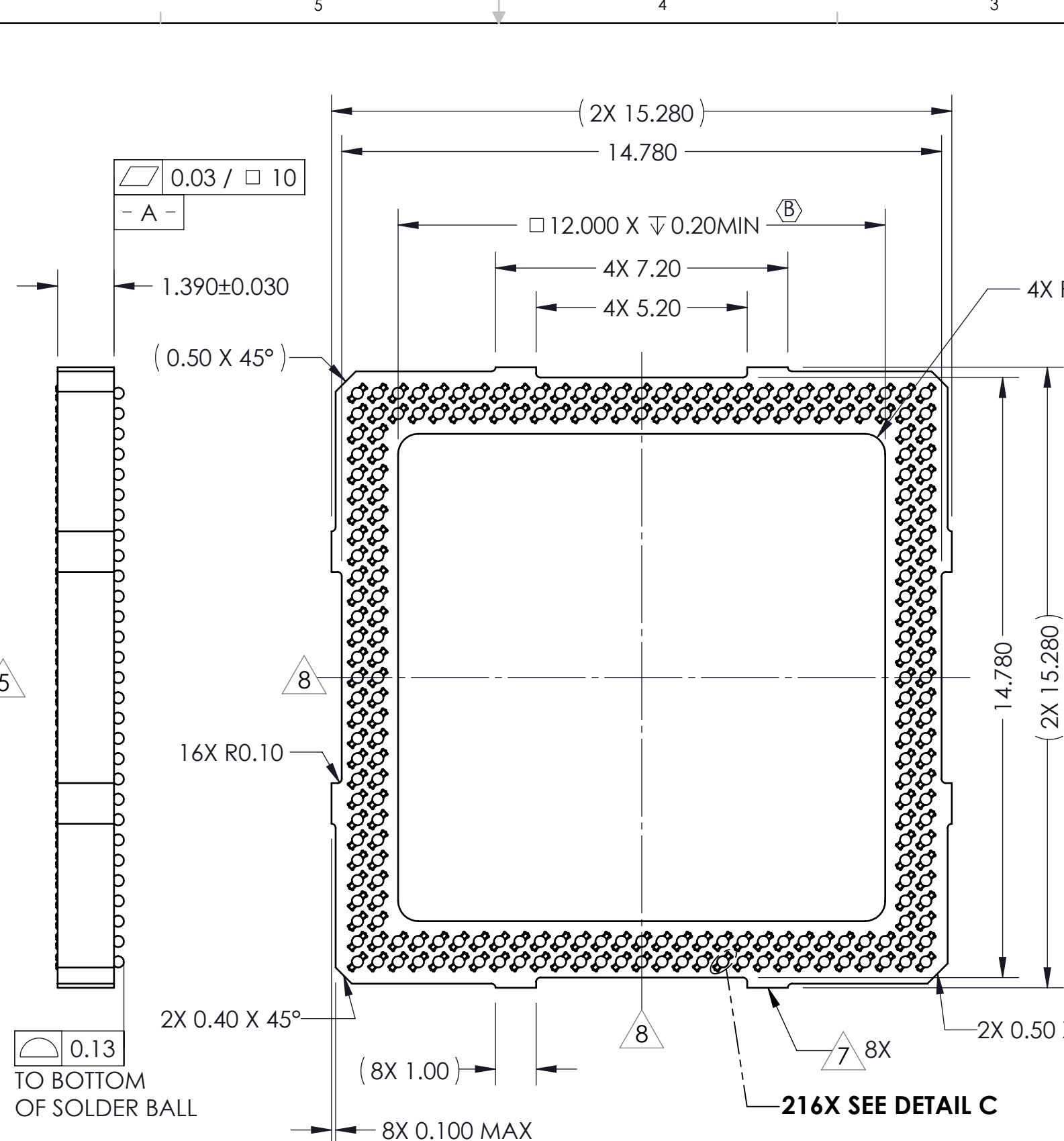
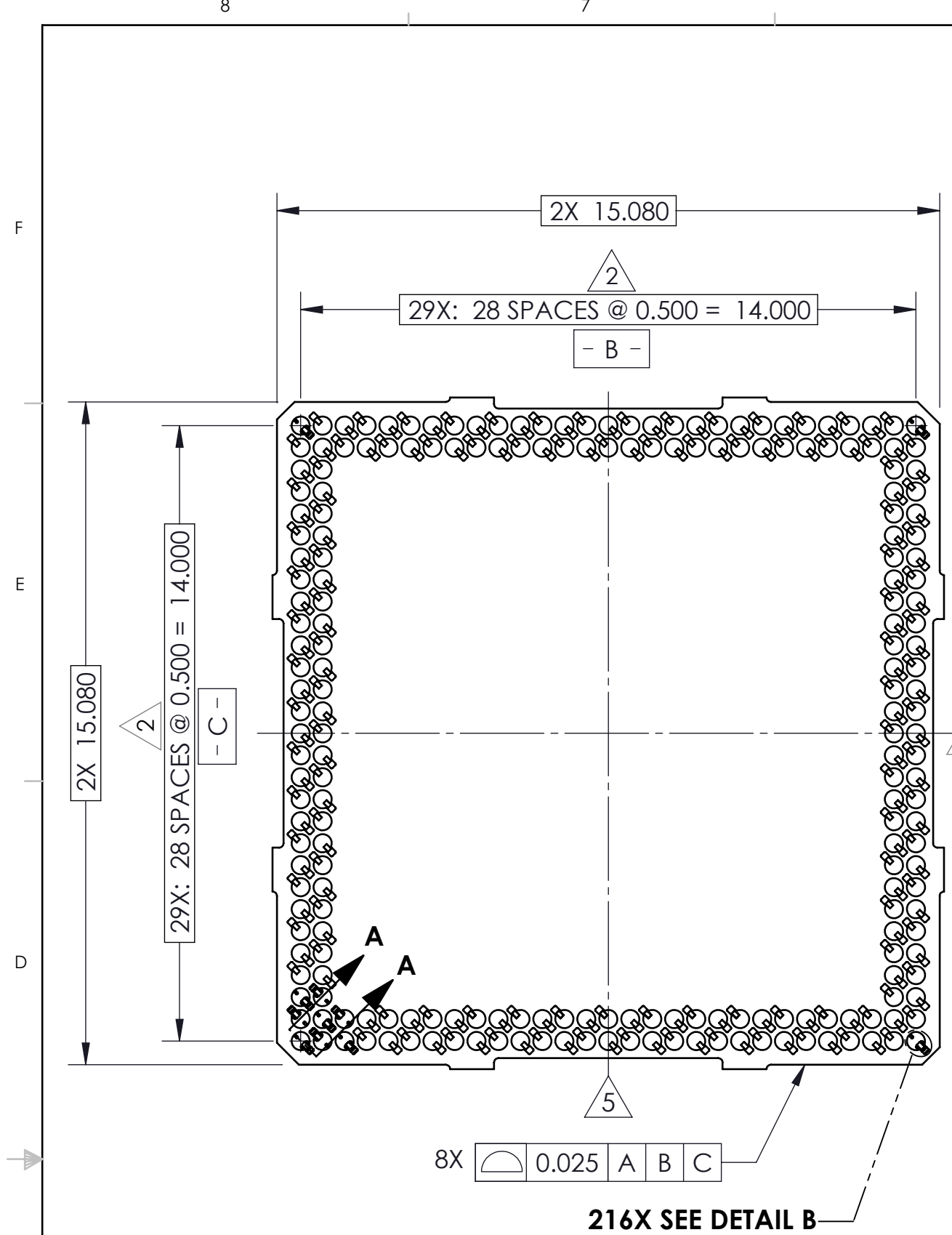
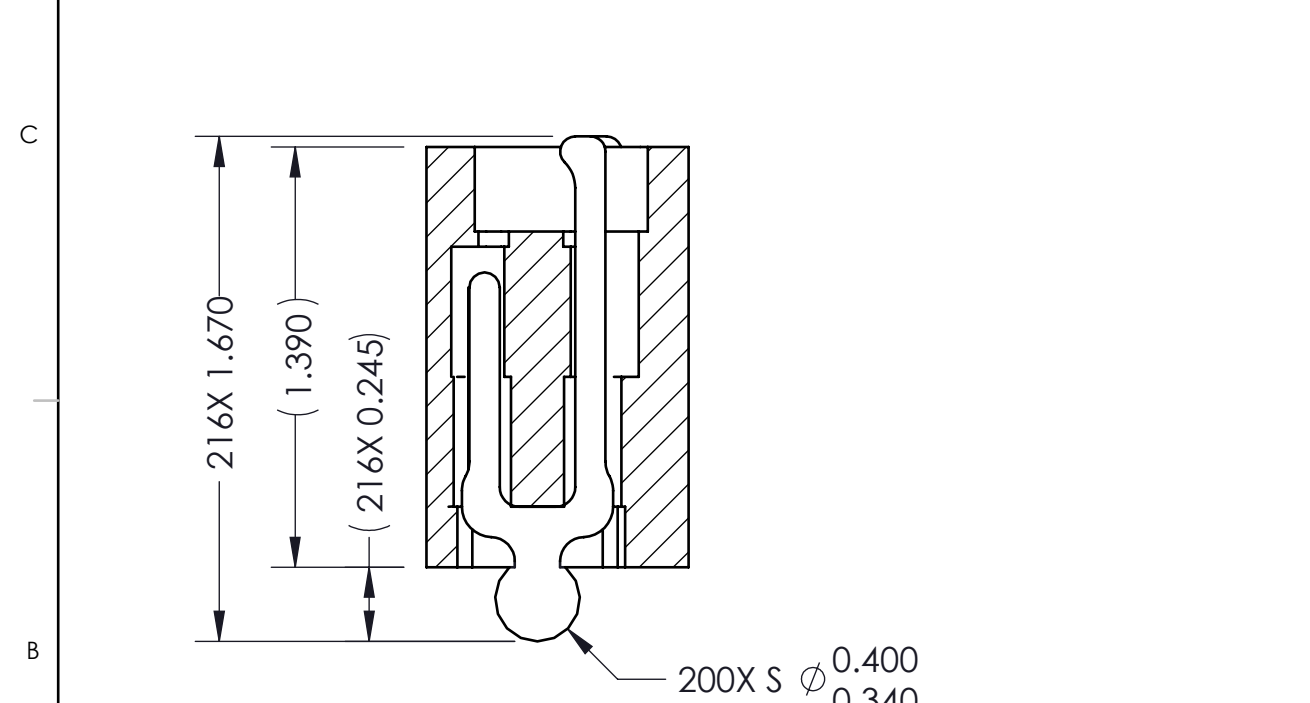


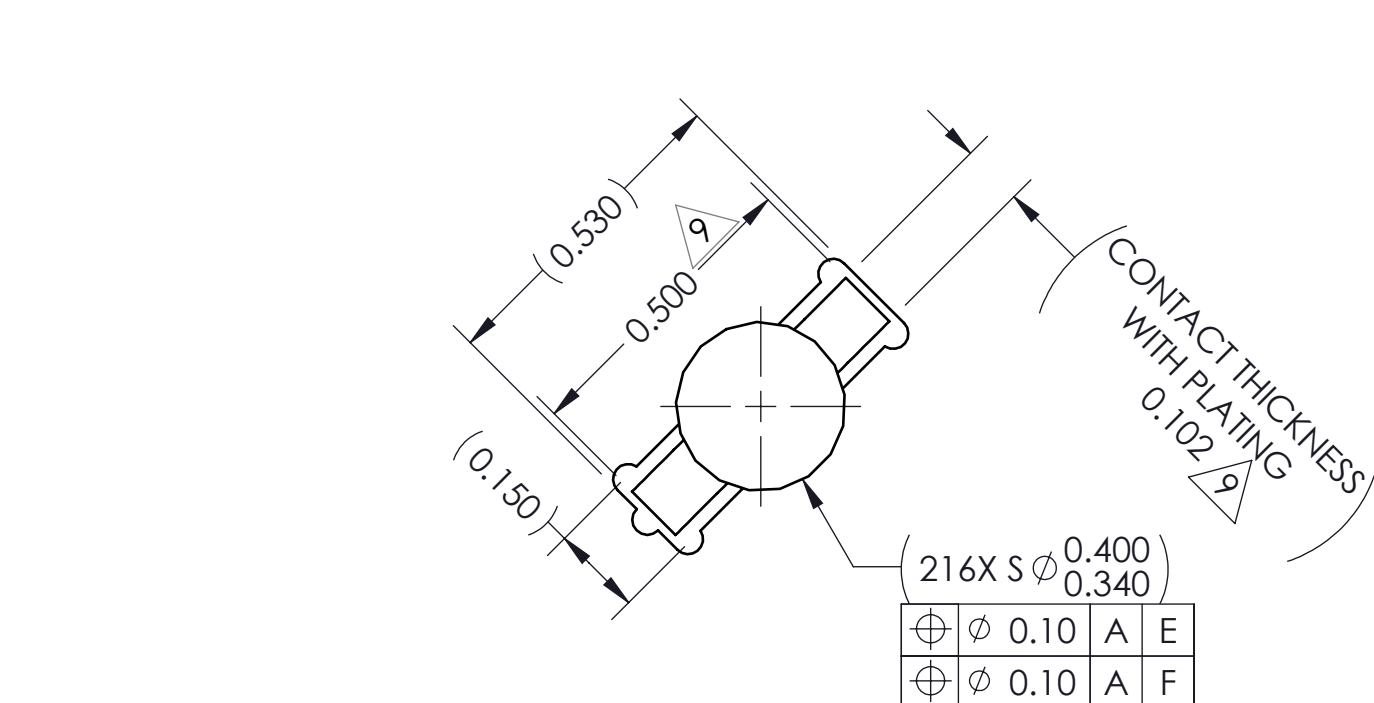
REV	ECO	BY	DESCRIPTION	APV	DATE
A	31240	AS	Initial Design	MP	01/16/13
B	31612	RS	Added Pocket	NSJ	03/04/15



- Notes:
- Reference HSIO specification 700001-0001 for solder attachment.
  - Locates center of part/pattern.
  - Reference HSIO specification 700001-0002 for application notes.
  - Footprint part number is 104311-0319.
  - Locates center of part/pattern.
  - Datums and are determined by  $\phi 0.415$  openings on corner slots.
  - Tooling marks permitted. Maximum 0.10 protrusion (shown).
  - E - Center of ball pattern.
  - F - Center of contact.

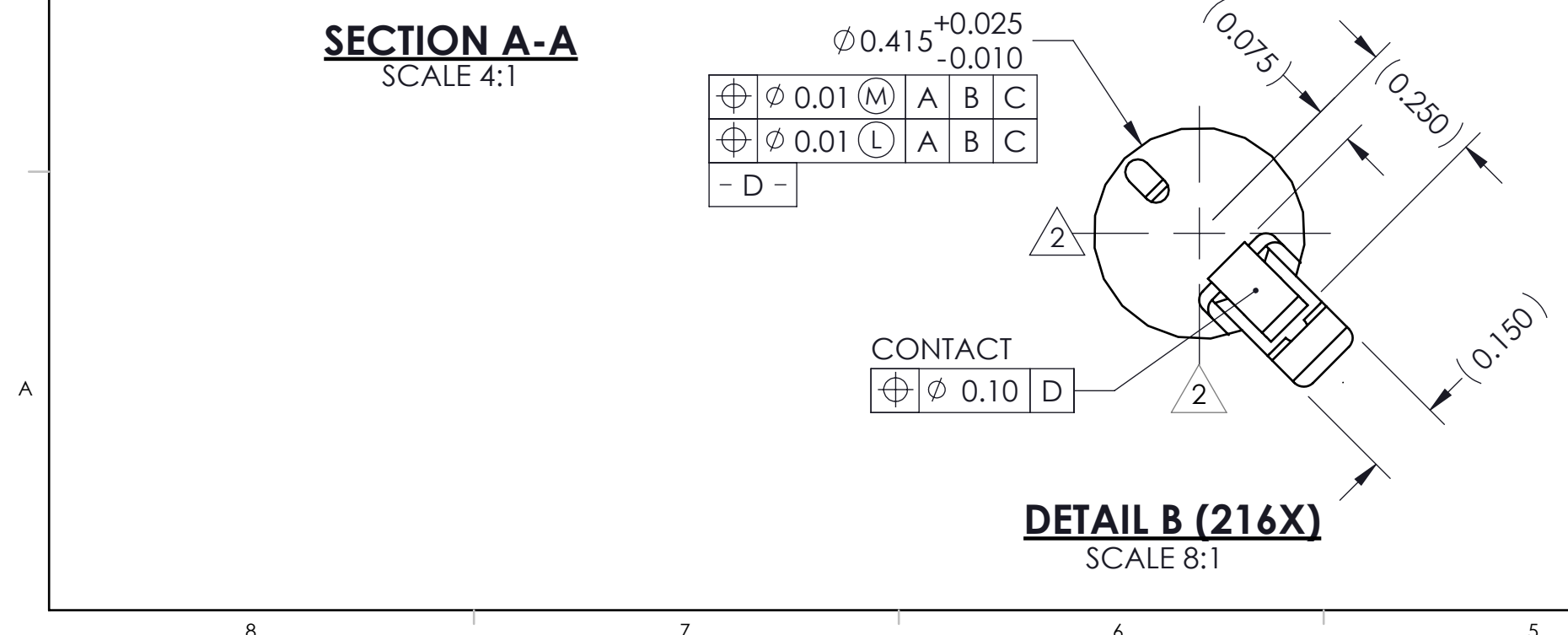


**SECTION A-A**  
SCALE 4:1



**DETAIL C (216X)**  
SCALE 8:1

Parts List			
Item No.	Qty.	Part Number	Description
-	-	107268-0010	SCKT, 216G4015-0.50
-	-	103864-0005	PRESS, DEVICE, INSERT, GRYP, 15X15 (SOLD SEPERATELY)
-	-	105900-0004	EXTRACTION TOOL, 4X53 (SOLD SEPERATELY)
1	1	107269-0010	SCKT, 216G4015-0.50 W/O SOLDER BALLS
1.1	1	107271-0010	HSG, 216G4015-0.50
1.2	216	104468-0025	CONTACT, G40, $\phi 0.35$



**DETAIL B (216X)**  
SCALE 8:1

**HSIO technologies**  
PROPRIETARY AND CONFIDENTIAL

THE INFORMATION CONTAINED IN THIS DRAWING IS THE SOLE PROPERTY OF HSIO TECHNOLOGIES, LLC. ANY REPRODUCTION IN PART OR AS A WHOLE WITHOUT THE WRITTEN PERMISSION OF HSIO TECHNOLOGIES, LLC IS PROHIBITED.

UNLESS OTHERWISE SPECIFIED:  
DIMENSIONS ARE IN MILLIMETERS  
TOLERANCES:  
ANGULAR:  $\pm 1^\circ$   
X.X  $\pm 0.25$   
X.XX  $\pm 0.10$   
X.XXX  $\pm 0.050$

INTERPRET GEOMETRIC TOLERANCING PER:  
MATERIAL  
SEE BOM  
FINISH

DO NOT SCALE DRAWING

NAME	DATE
DRAWN AS	01/15/13
CHECKED MP	01/15/13

LEGEND:  
 NOTE CALLOUT  
 REVISION CHANGE  
 ITEM NUMBER

**HSIO TECHNOLOGIES, LLC.**  
13300 67th AVENUE NORTH  
MAPLE GROVE, MINNESOTA 55311  
763-447-6260

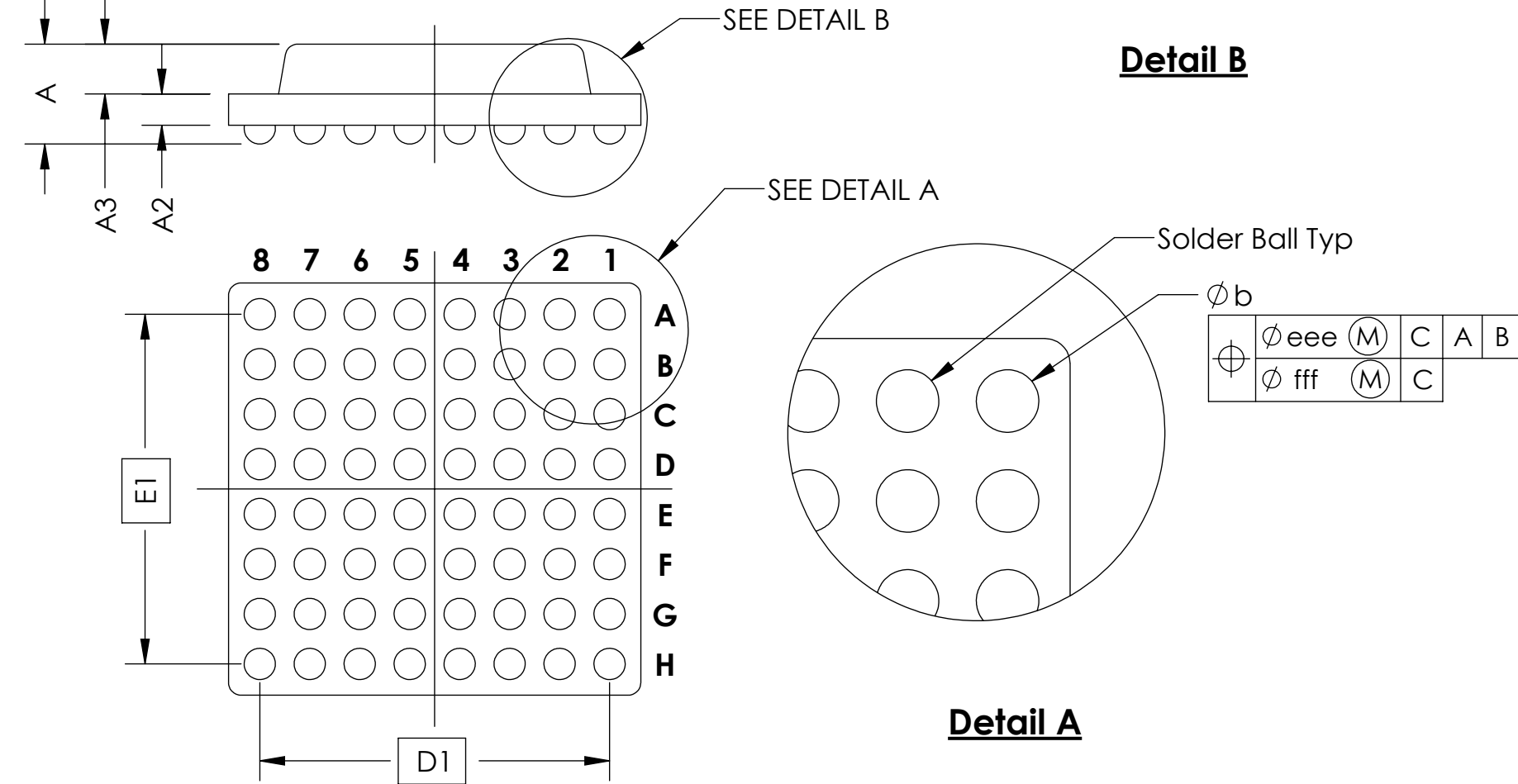
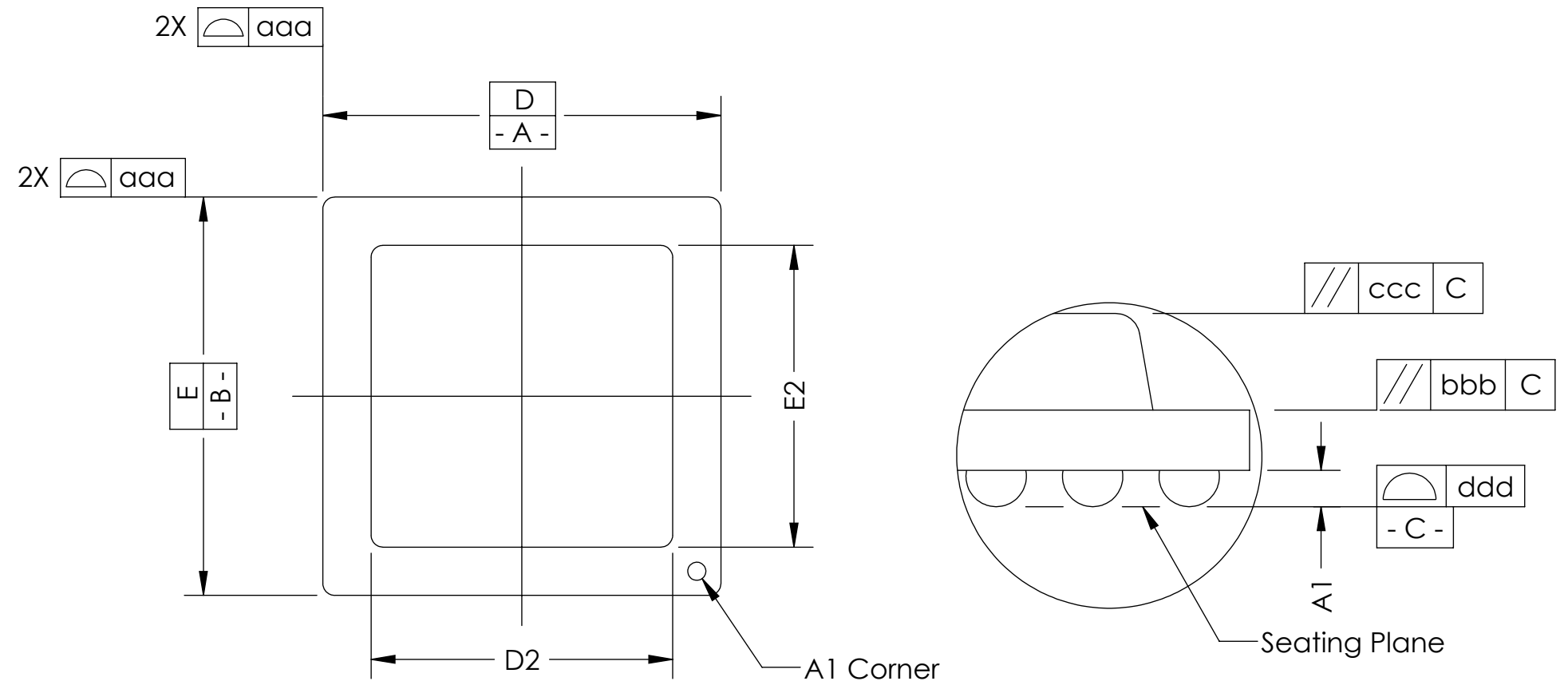
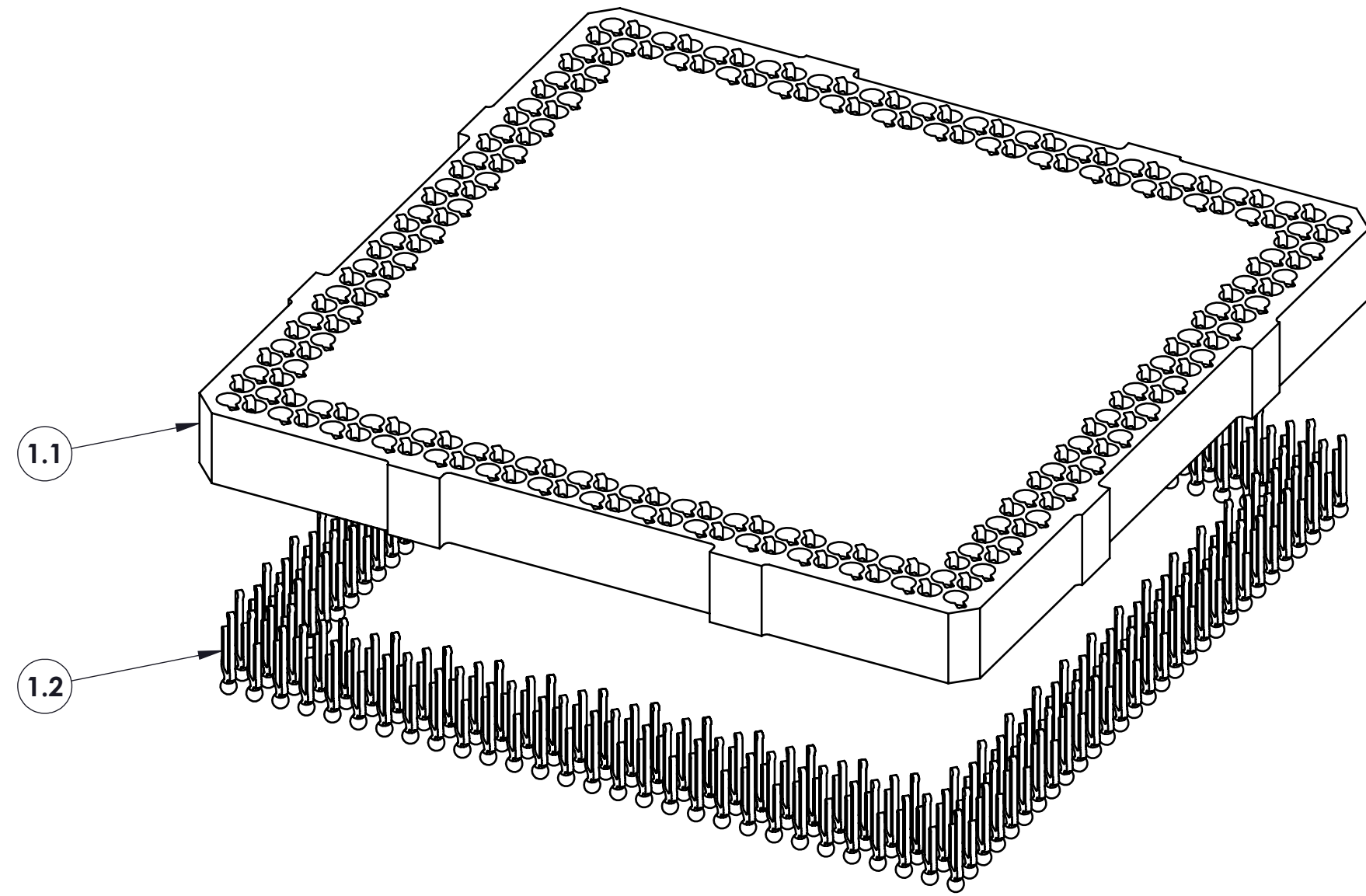
TITLE:  
SCKT, 216G4015-0.50,  
SAC305

DWG. NO. **107268-0010** REV **B**

SCALE: 10:1 SIZE: C SHEET 1 OF 2

SOCKET FOR DEVICES THAT ARE WITHIN THESE SPECIFICATIONS					
Lead Count	<b>N</b>	216	Package Size	<b>D</b>	15.00
Columns	<b>ND</b>	29		<b>E</b>	15.00
Rows	<b>NE</b>	29	Ball Spacing	<b>D1</b>	14.000
Pitch	<b>e</b>	0.50		<b>E1</b>	14.000
Ball Size	<b>b</b>	0.35±0.05	Encapsulant/ Top Size	<b>D2</b>	n/a
Total Thickness	<b>A</b>	n/a		<b>E2</b>	n/a
Ball Height	<b>A1</b>	0.250 MIN	Pattern Style	Perimeter*	
Substrate Thickness	<b>A2</b>	n/a	Perimeter Rows	2	
Top Thickness	<b>A3</b>		Center Array	N/A	
Form Tolerances					
Edge	<b>aaa</b>	0.10	Bottom	<b>ddd</b>	0.08
Substrate	<b>bbb</b>	0.10	Position	<b>eee</b>	0.15
top	<b>ccc</b>	0.10	Position	<b>fff</b>	0.05

All dimensions are in millimeters.  
\* See footprint for pattern details.



**Generic Representation with Full Grid Array**

**PROPRIETARY AND CONFIDENTIAL**

THE INFORMATION CONTAINED IN THIS DRAWING IS THE SOLE PROPERTY OF HSIO TECHNOLOGIES, LLC. ANY REPRODUCTION IN PART OR AS A WHOLE WITHOUT THE WRITTEN PERMISSION OF HSIO TECHNOLOGIES, LLC IS PROHIBITED.

UNLESS OTHERWISE SPECIFIED: DIMENSIONS ARE IN MILLIMETERS TOLERANCES: ANGULAR: ± 1° X.X ±0.25 X.XX ±0.10 X.XXX ±0.050	DRAWN	AS	DATE	01/15/13	HSIO TECHNOLOGIES, LLC. 13300 67th AVENUE NORTH MAPLE GROVE, MINNESOTA 55311 763-447-6260	
	CHECKED	MP	DATE	01/15/13		
LEGEND: △ NOTE CALLOUT ◻ REVISION CHANGE ○ ITEM NUMBER						TITLE: SCKT, 216G4015-0.50, SAC305
					DWG. NO. <b>107268-0010</b>	REV <b>B</b>
					SCALE: 10:1	SIZE: C
					SHEET 2 OF 2	