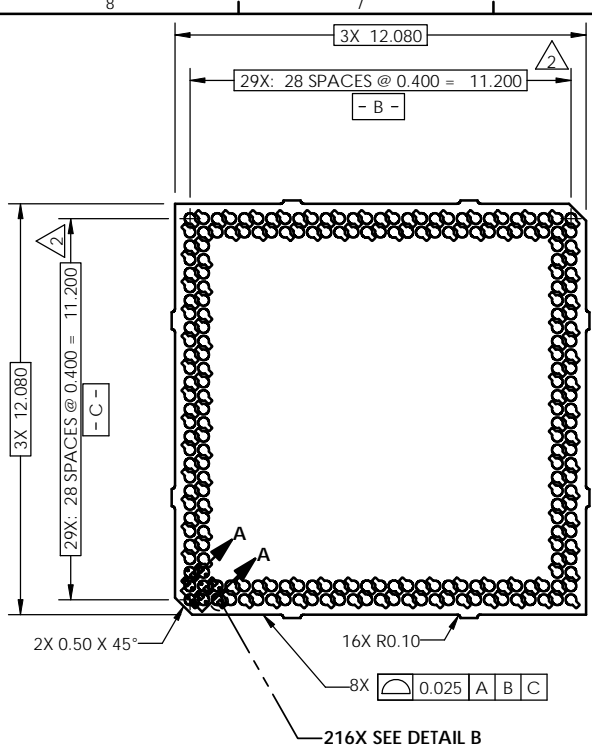
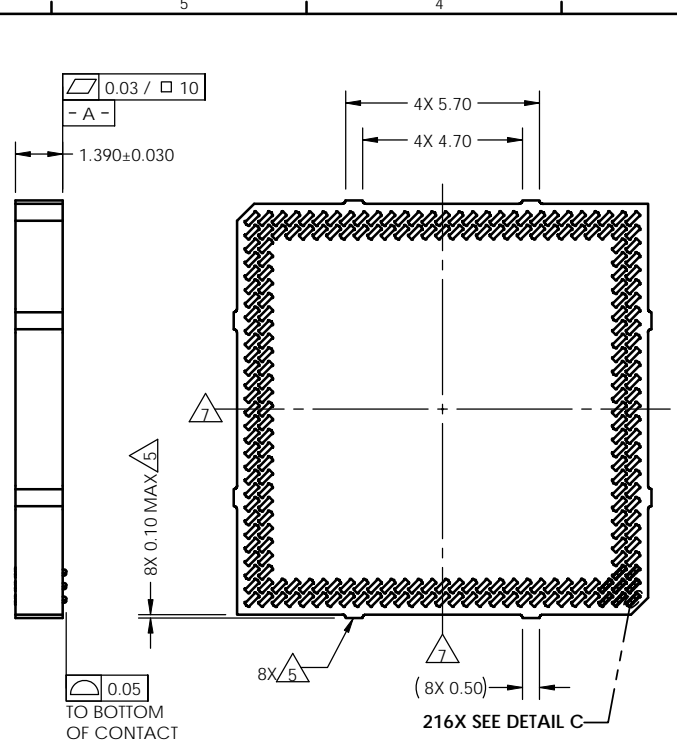


REV	ECO	BY	DESCRIPTION	APV	DATE
A	30821	JN	Initial Design	KW	06/29/11



SOCKET TOP (DUT) VIEW

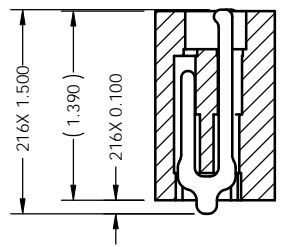


SOCKET BOTTOM (PWB) VIEW

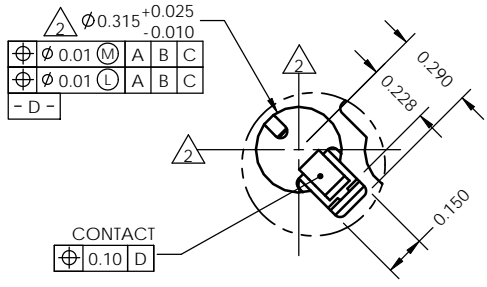
Notes:

- Footprint part number is 104311-0270.
- Locates center of slot/contact.
- Reference Cascade Microtech specification 103862-0004 for solder attachment.
- Reference Cascade Microtech specification 103863-0001 for application notes.
- Tooling marks permitted. Maximum 0.10 protrusion (shown).
- E - Center of contact pattern.
- Datums - B - and - C - are determined by $\phi 0.315$ openings at corner slots.
- Most contacts not shown to reduce file size.

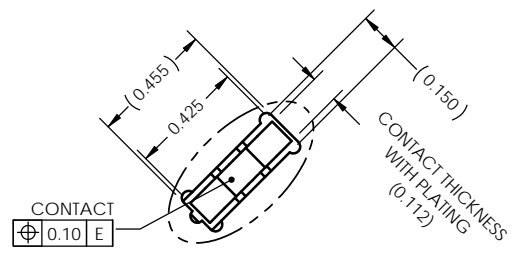
Parts List	
Part Number	Description
107620-0004	SCKT, 216G4012-0.40
103684-0002	PRESS, DEVICE INSERT, GRYP 12X12 (SOLD SEPARATELY)
104553-0186	STEN, FLEX, 216G8012-0.40
105900-0004	EXTRACTION TOOL, 4X53 (SOLD SEPARATELY)
106083-0020	FRAME, ALIGN, GRY12.08



SECTION A-A
SCALE 4:1



DETAIL B (216X)
SCALE 8:1

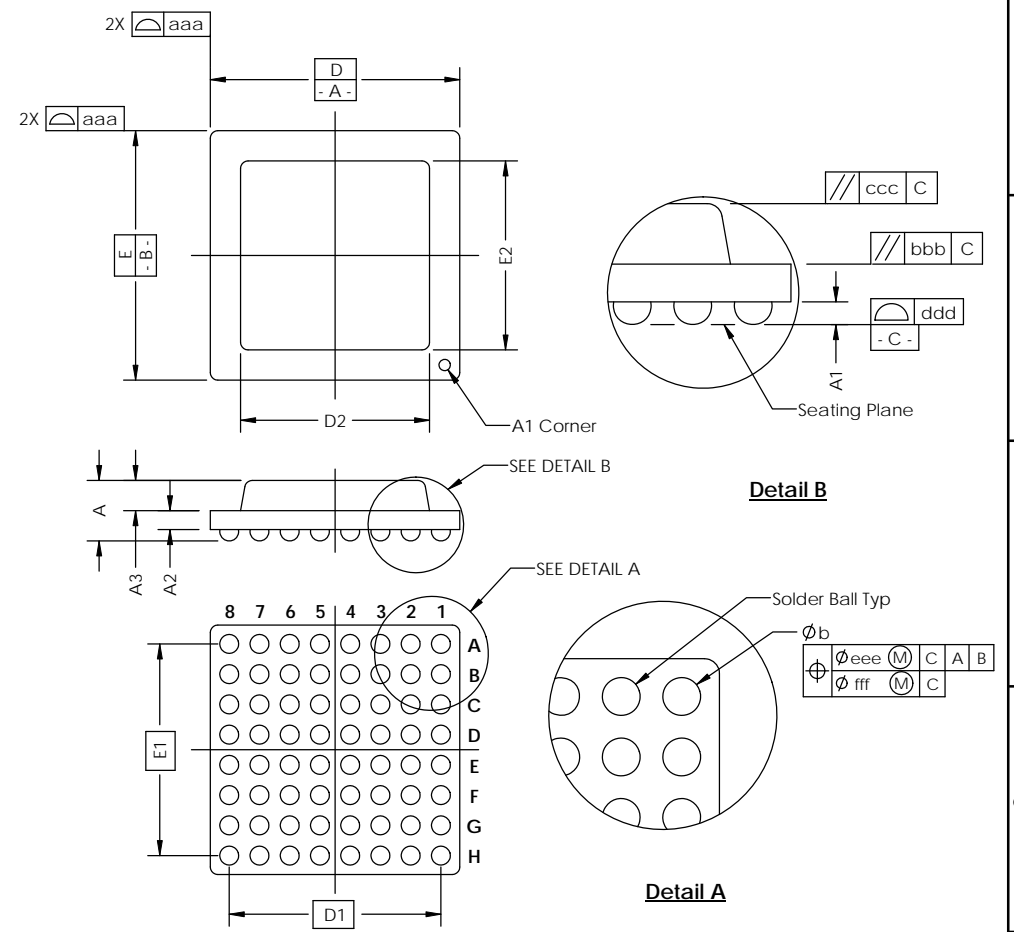
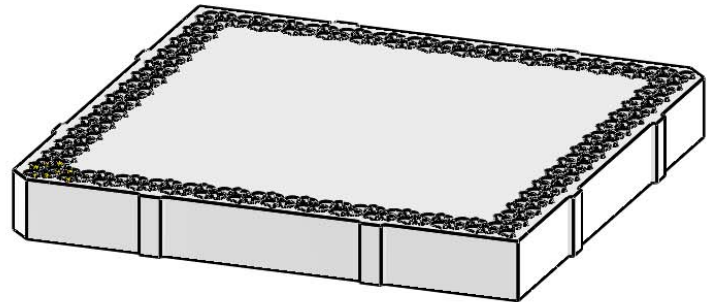


DETAIL C (272X)
SCALE 8:1

UNLESS OTHERWISE SPECIFIED DIMENSIONS ARE IN MILLIMETERS DIM'S APPLY AFTER PLATING TOLERANCES UNLESS OTHERWISE NOTED:		THE INFORMATION CONTAINED IN THIS DRAWING IS THE SOLE PROPERTY OF CASCADE MICROTECH, INC. ANY REPRODUCTION IN PART OR WHOLE WITHOUT THE WRITTEN PERMISSION OF CASCADE MICROTECH, INC. IS PROHIBITED.	
DRAWING APPROVALS		7115 NORTHLAND TERRACE SUITE 400 BROOKLYN PARK, MN 55428 (763) 509-0066	
NAME J. Nied	DATE 06/29/11	SCKT, 216G4012-0.40	
APPROV. K. Wilson	DATE 06/29/11		
LEGEND:	THIRD ANGLE PROJECTION	SCALE C	QUANTITIES SOLIDWORKS
(X) NOTE CALLOUT	(A) REVISION CHANGE	SEE BOM	DRWG NO. 107620-0004
(X) DIM NUMBER			SHEET A

SOCKET FOR DEVICES THAT ARE WITHIN THESE SPECIFICATIONS					
Lead Count	N	216	Package Size	D	12.00
Columns	ND	29		E	12.00
Rows	NE	29	Ball Spacing	D1	11.200
Pitch	e	0.40		E1	11.200
Ball Size	b	0.25±0.05	Encapsulant/ Top Size	D2	n/a
Total Thickness	A	n/a		E2	n/a
Ball Height	A1	0.175 MIN	Pattern Style	PERIMETER*	
Substrate Thickness	A2	n/a	Perimeter Rows	2	
Top Thickness	A3		Center Array	n/a	
Form Tolerances					
Edge	aaa	0.10	Bottom	ddd	0.08
Substrate	bbb	0.10	Position	eee	0.15
top	ccc	0.10	Position	fff	0.05

All dimensions are in millimeters.
* See footprint for pattern details.



Generic Representation with Full Grid Array

<small>THE INFORMATION CONTAINED IN THIS DRAWING IS THE SOLE PROPERTY OF CASCADE MICROTECH, INC. ANY REPRODUCTION IN PART OR WHOLE WITHOUT THE WRITTEN PERMISSION OF CASCADE MICROTECH, INC. IS PROHIBITED.</small>			
<small>UNLESS OTHERWISE SPECIFIED - DIMENSIONS ARE IN MILLIMETERS - DIMS APPLY AFTER PLATING - TOLERANCES UNLESS OTHERWISE NOTED: DECIMALS: X.X ±0.25 X.XX ±0.10 X.XXX ±0.050</small>		7115 NORTHLAND TERRACE SUITE 400 BROOKLYN PARK, MN 55428 (763) 509-0066	
SKCT, 216G4012-0.40			
LEGEND: NOTE CALLOUT REVISION CHANGE ITEM NUMBER	<small>DATE FORNAT</small> C SOLIDWORKS	<small>DRAWING NO.</small> 107620-0004	<small>REV.</small> A
<small>SCALE</small> See Page 1		<small>SHEET</small> 2 of 2	