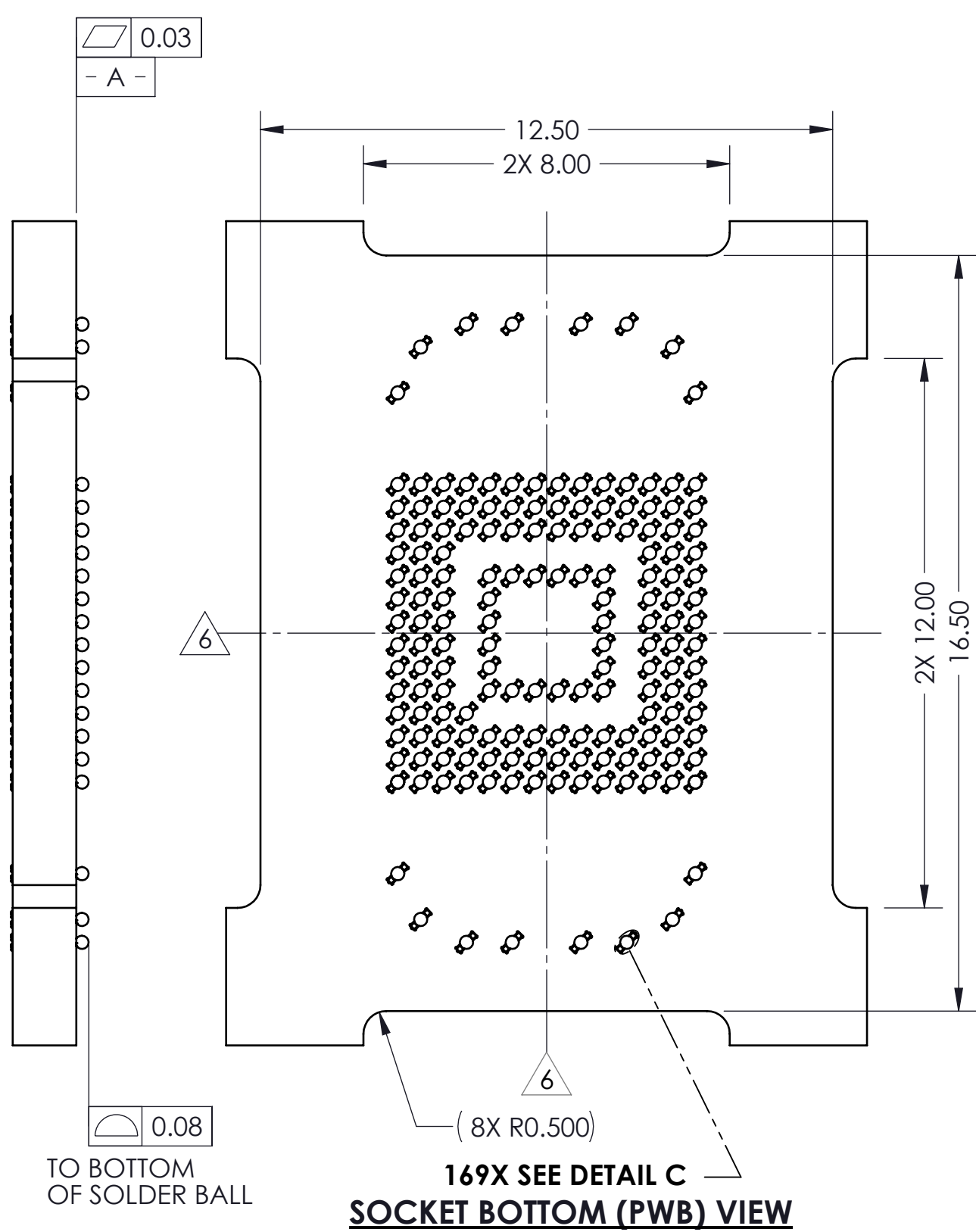
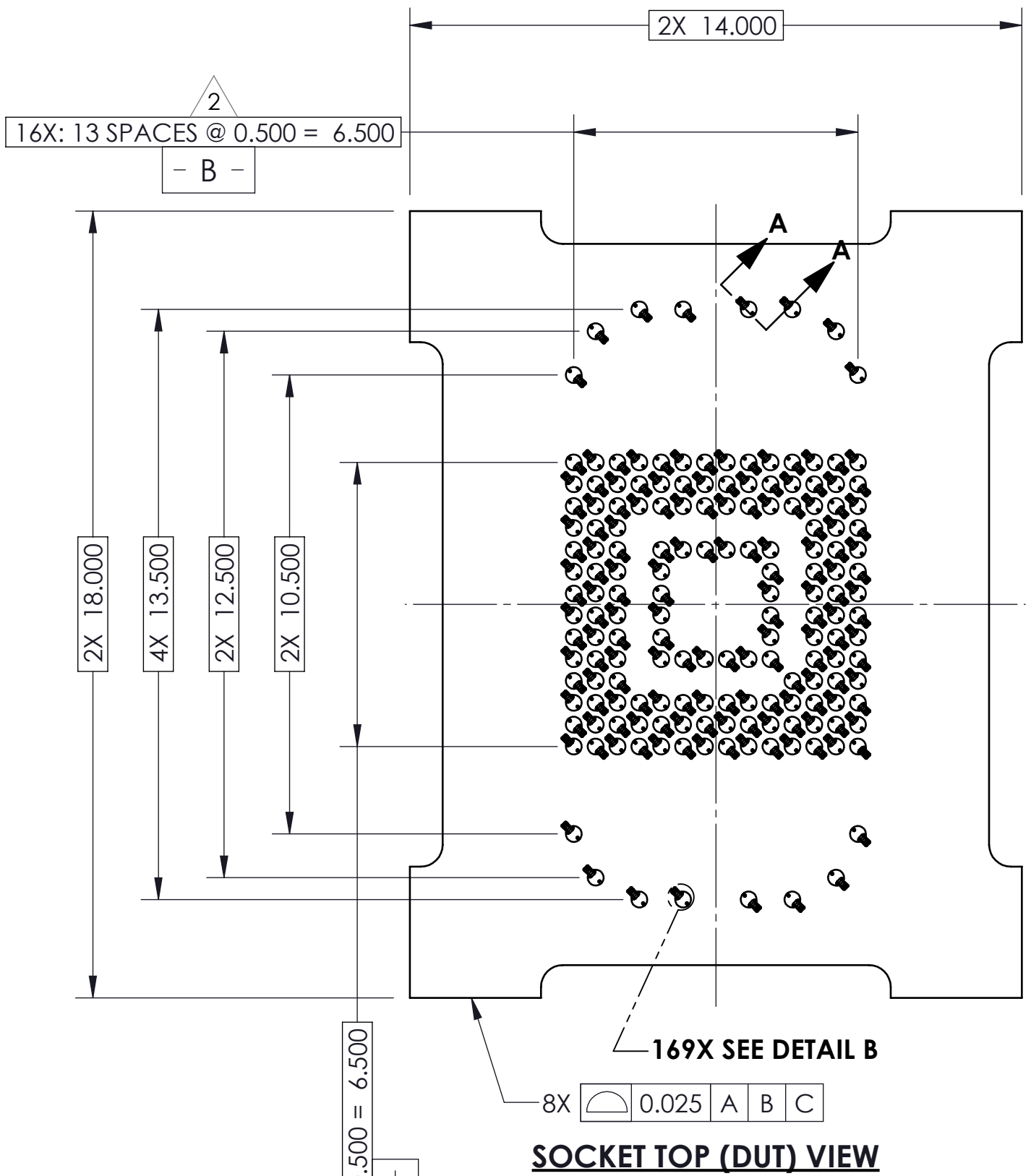
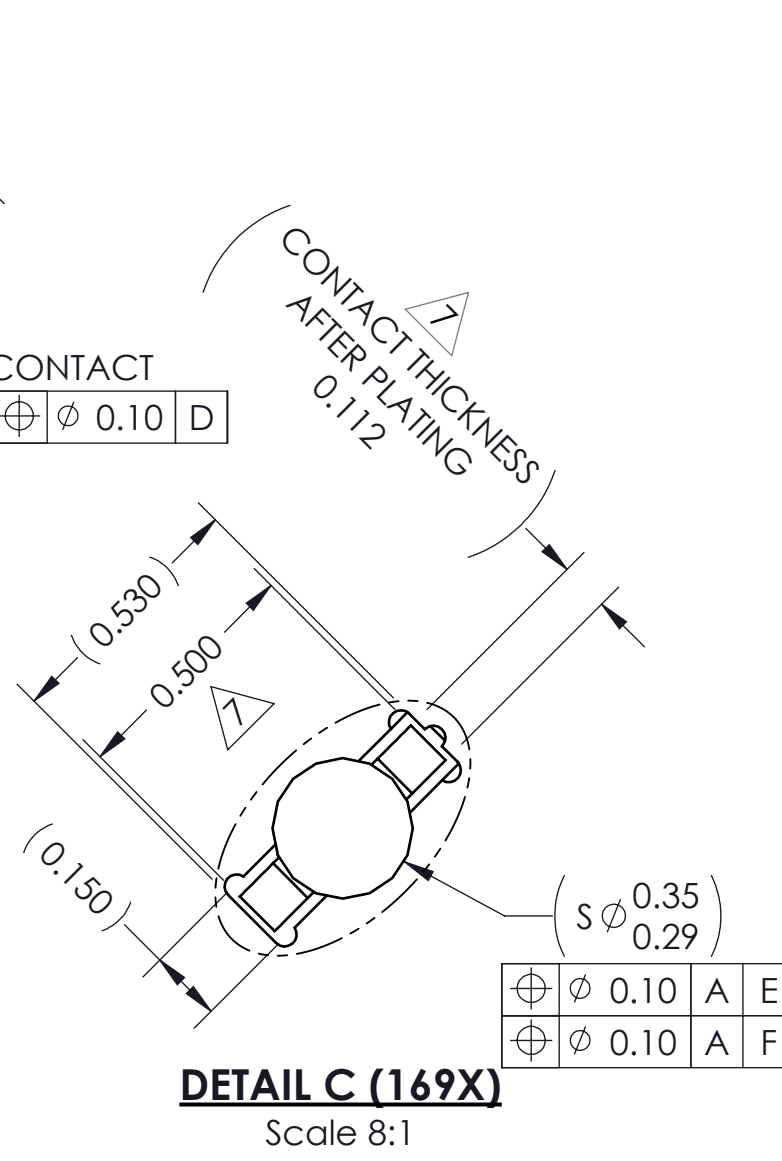
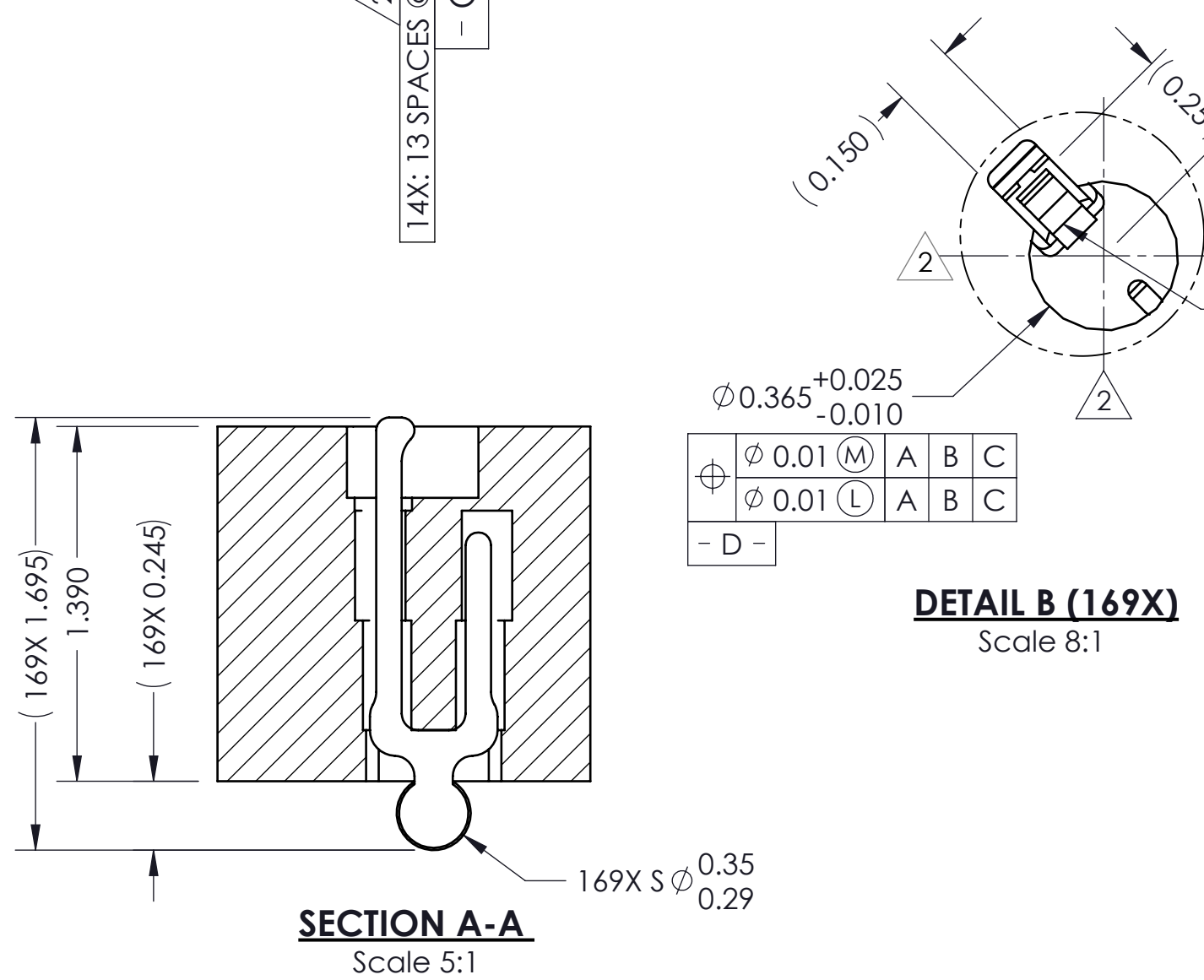


REV	ECO	BY	DESCRIPTION	APV	DATE
A	31776	PAR	INITIAL DESIGN	NSJ	05/10/16



- NOTES:
- FOOTPRINT PART NUMBER IS 104311-0222.
 - DIMENSION LOCATES CENTER OF CONTACT/SLOT.
 - PRESS SIZE IS 14.0 X 18.0.
 - REFERENCE CASCADE MICROTECH SPEC 103862-0004 FOR SOLDER ATTACHMENT.
 - REFERENCE CASCADE MICROTECH SPEC 103863-0001 FOR APPLICATION NOTES.
 - CENTER OF BALL PATTERN.
 - CENTER OF CONTACT.
 - DATUMS B AND C ARE DETERMINED BY $\phi 0.365$ OPENINGS ON CORNER SLOTS.



PARTS LIST			
ITEM	QTY	PART NUMBER	DESCRIPTION
-	-	108387-0066	SCKT, 169G40 14X18-0.50
-	-	103864-0116	PRESS, DEV INS, 14X18 (SOLD SEPARATELY)
-	-	105900-0004	EXTRACTION TOOL, 4X53 (SOLD SEPARATELY)
-	-	104553-0175	STEN FLEX, 169G40 14X18-0.50 (SOLD SEPARATELY)
1	1	107249-0012	CS, 169G40 14X18-0.50
1.1	1	107247-0012	HSG, 169G40 14X18-0.50
1.2	169	104468-0015	CONTACT, G40, \phi 0.30, TIN, 0.1016

HSIO technologies
PROPRIETARY AND CONFIDENTIAL

THE INFORMATION CONTAINED IN THIS DRAWING IS THE SOLE PROPERTY OF HSIO TECHNOLOGIES, LLC. ANY REPRODUCTION IN PART OR AS A WHOLE WITHOUT THE WRITTEN PERMISSION OF HSIO TECHNOLOGIES, LLC IS PROHIBITED.

UNLESS OTHERWISE SPECIFIED:
DIMENSIONS ARE IN MILLIMETERS
TOLERANCES:
ANGULAR: $\pm 1^\circ$
X.X ± 0.25
X.XX ± 0.10
X.XXX ± 0.050

INTERPRET GEOMETRIC TOLERANCING PER:
MATERIAL: SEE BOM
FINISH:

DO NOT SCALE DRAWING

DRAWN	PAR	05/10/16
CHECKED	NSJ	05/10/16

LEGEND:
 NOTE CALLOUT
 REVISION CHANGE
 ITEM NUMBER

HSIO TECHNOLOGIES, LLC.
13400 68th AVENUE NORTH
MAPLE GROVE, MINNESOTA 55311
763-447-6260

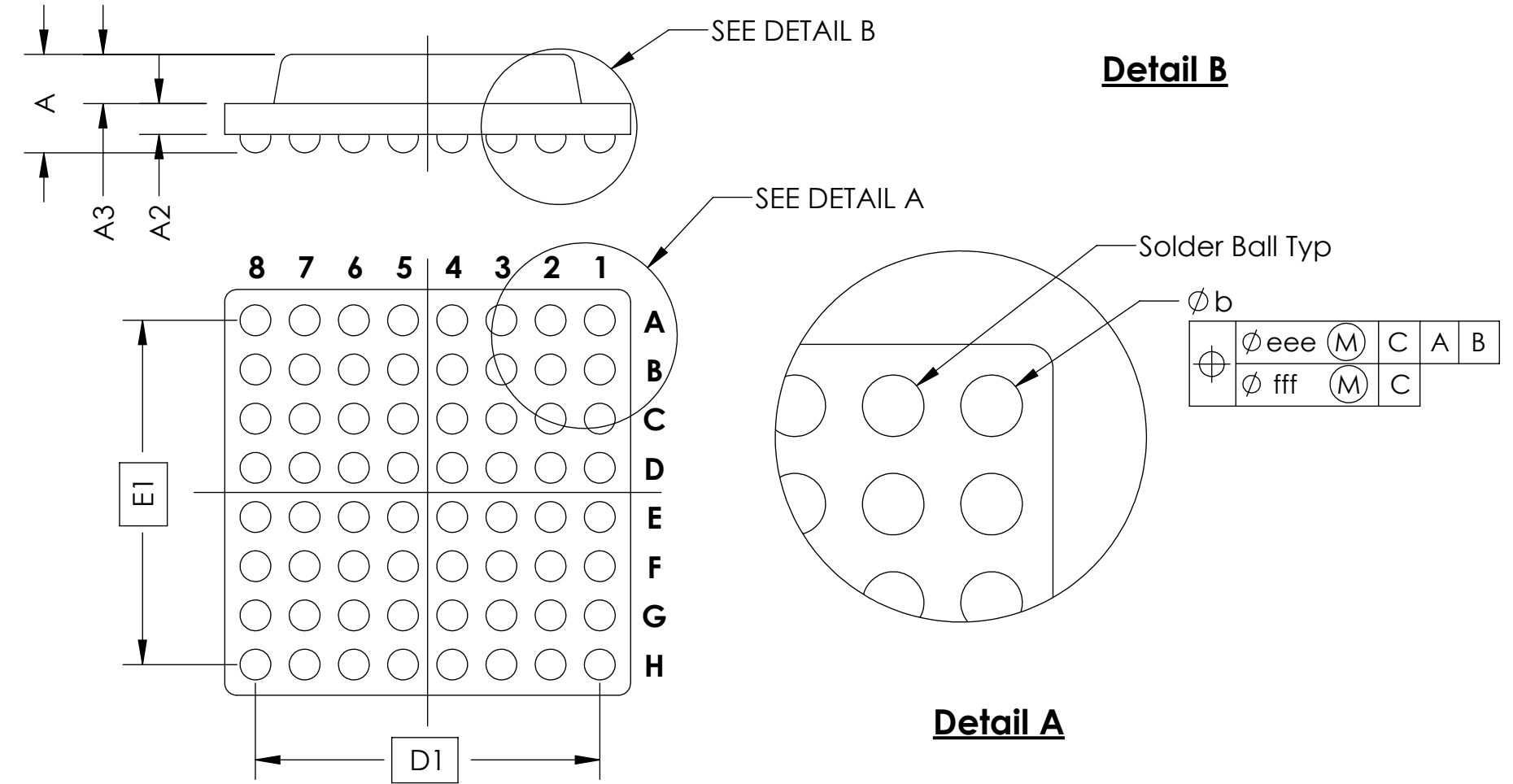
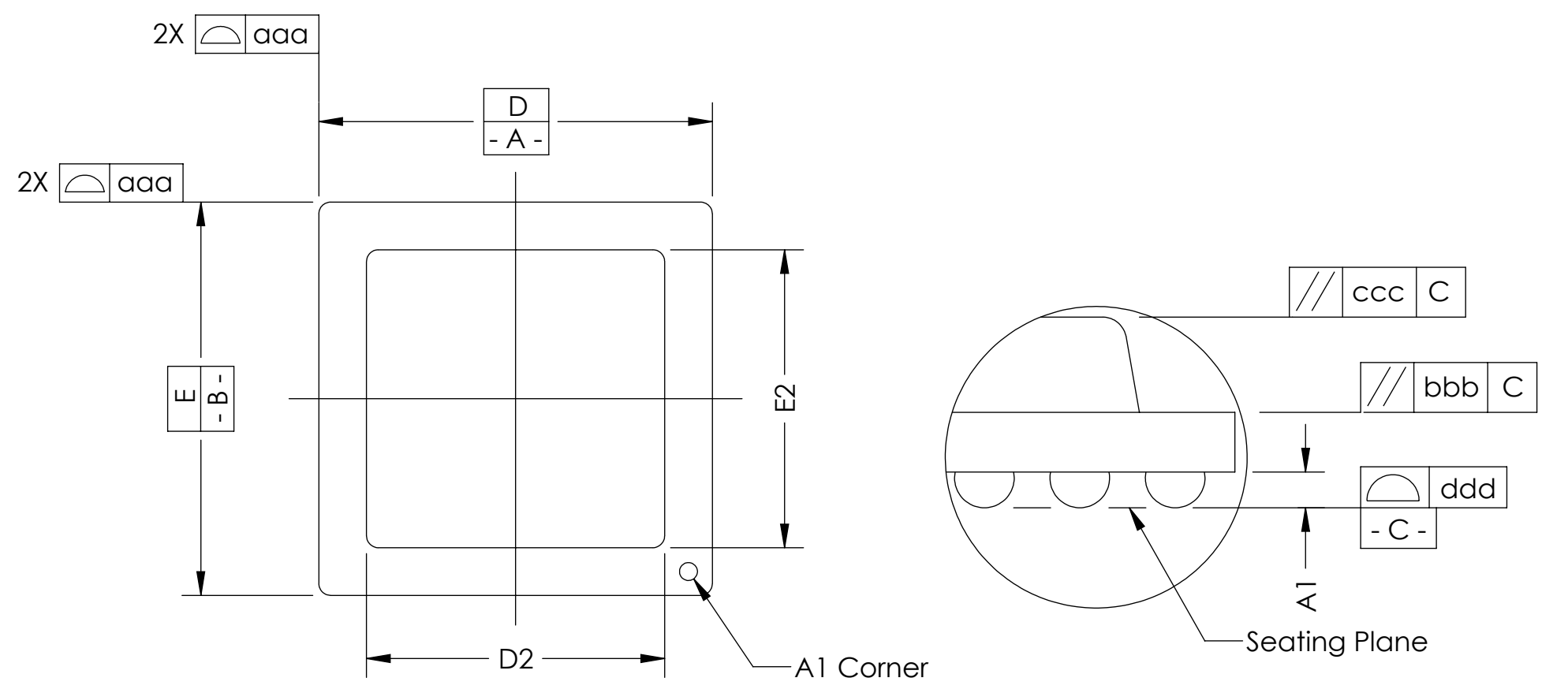
TITLE:
SCKT, 169G40 14 X 18-0.50,
EUT

DWG. NO. **108387-0066** REV **A**

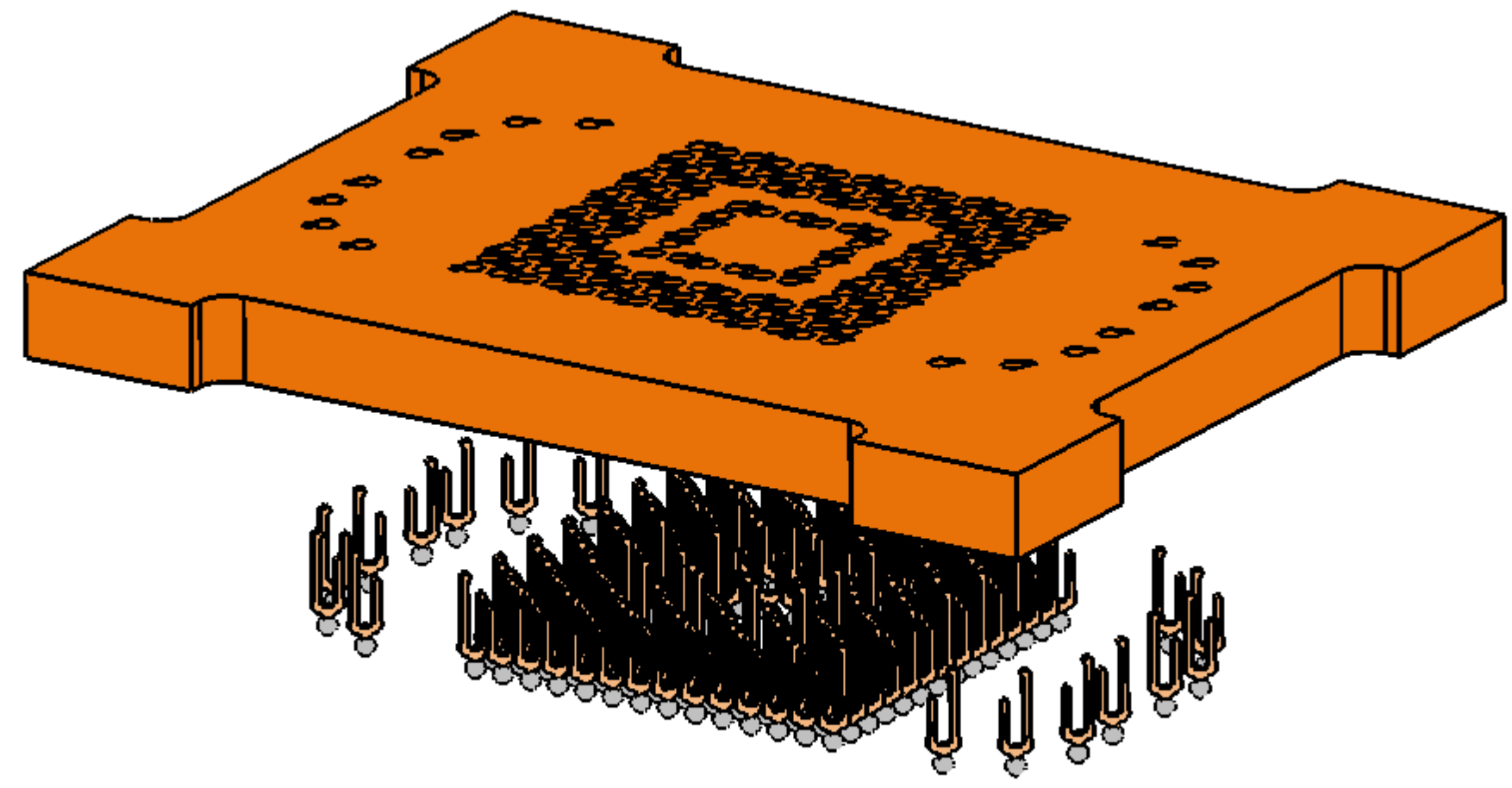
SCALE: 10:1 | SIZE: C | SHEET 1 OF 2

SOCKET FOR DEVICES WITHIN THESE SPECIFICATIONS				
Lead Count	N	169	Package Size	D 14.00
Columns	ND	14		E 18.00
Rows	NE	17	Ball Spacing	D1 6.500*
Pitch	e	0.50		E1 13.500*
Ball Size	b	0.30±0.05	Encapsulant/ Top Size	D2 n/a
Total Thickness	A	N/A	Pattern Style	Irregular*
Ball Height	A1	0.225 min		
Substrate Thickness	A2	N/A	Perimeter Rows	n/a
Top Thickness	A3		Center Array	n/a
Form Tolerances				
Edge	aaa	0.20	Bottom	ddd 0.15
Substrate	bbb	0.20	Position	eee 0.20
top	ccc	0.20	Position	fff 0.08

* SEE FOOTPRINT FOR PATTERN DETAILS.
ALL DIMENSIONS ARE IN MILLIMETERS.



Generic Representation with Full Grid Array



PROPRIETARY AND CONFIDENTIAL

THE INFORMATION CONTAINED IN THIS DRAWING IS THE SOLE PROPERTY OF HSIO TECHNOLOGIES, LLC. ANY REPRODUCTION IN PART OR AS A WHOLE WITHOUT THE WRITTEN PERMISSION OF HSIO TECHNOLOGIES, LLC IS PROHIBITED.

UNLESS OTHERWISE SPECIFIED: DIMENSIONS ARE IN MILLIMETERS TOLERANCES: ANGULAR: ± 1° X.X ±0.25 X.XX ±0.10 X.XXX ±0.050	DRAWN	NAME	DATE	HSIO TECHNOLOGIES, LLC. 13400 68th AVENUE NORTH MAPLE GROVE, MINNESOTA 55311 763-447-6260
	CHECKED	PAR	05/10/16	
LEGEND: △ NOTE CALLOUT ◻ REVISION CHANGE ○ ITEM NUMBER				TITLE: SCKT, 169G40 14X18-0.50, EUT
				DWG. NO. 108387-0066
SCALE: 10:1				SIZE: C
SHEET 2 OF 2				REV A