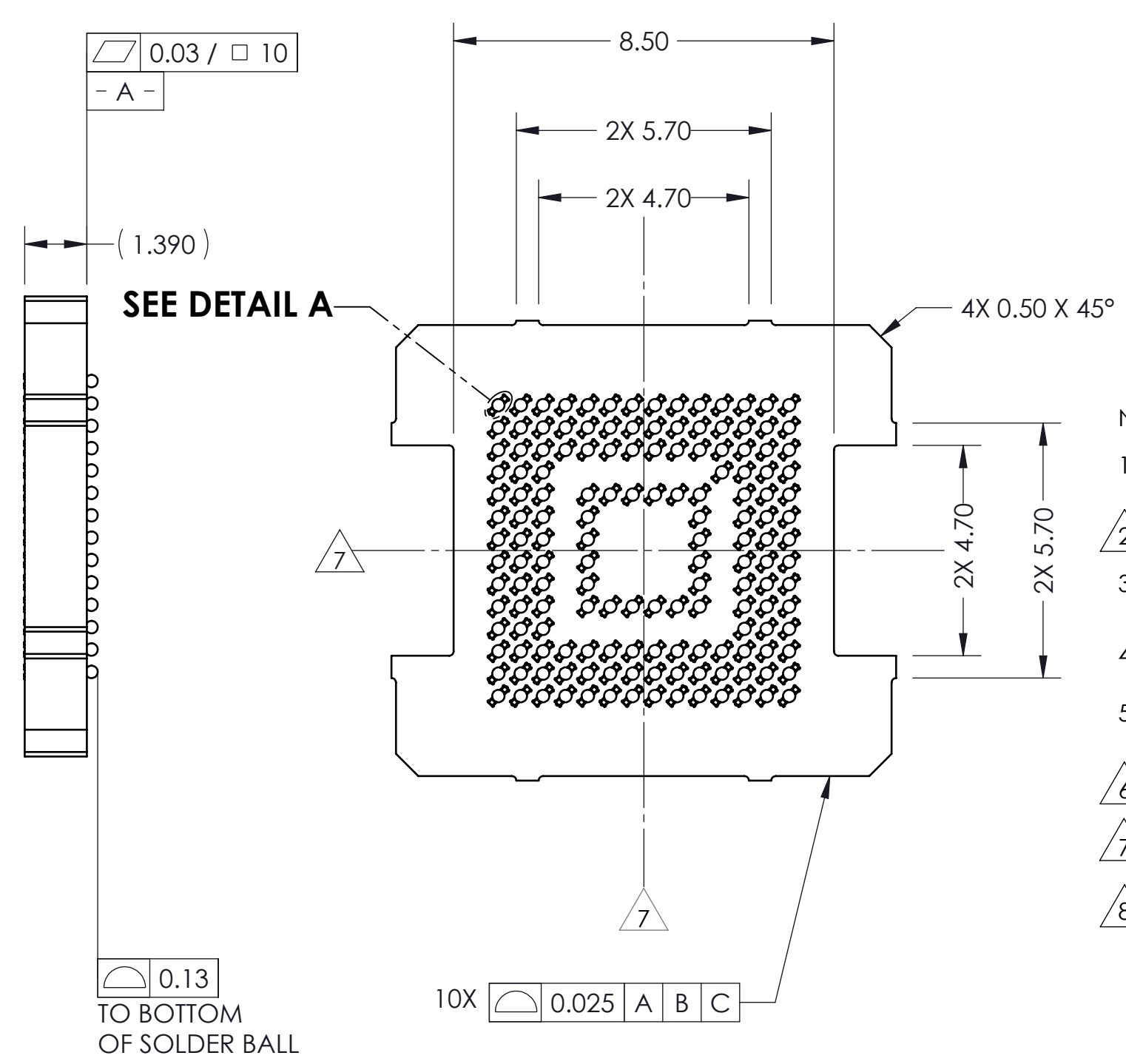
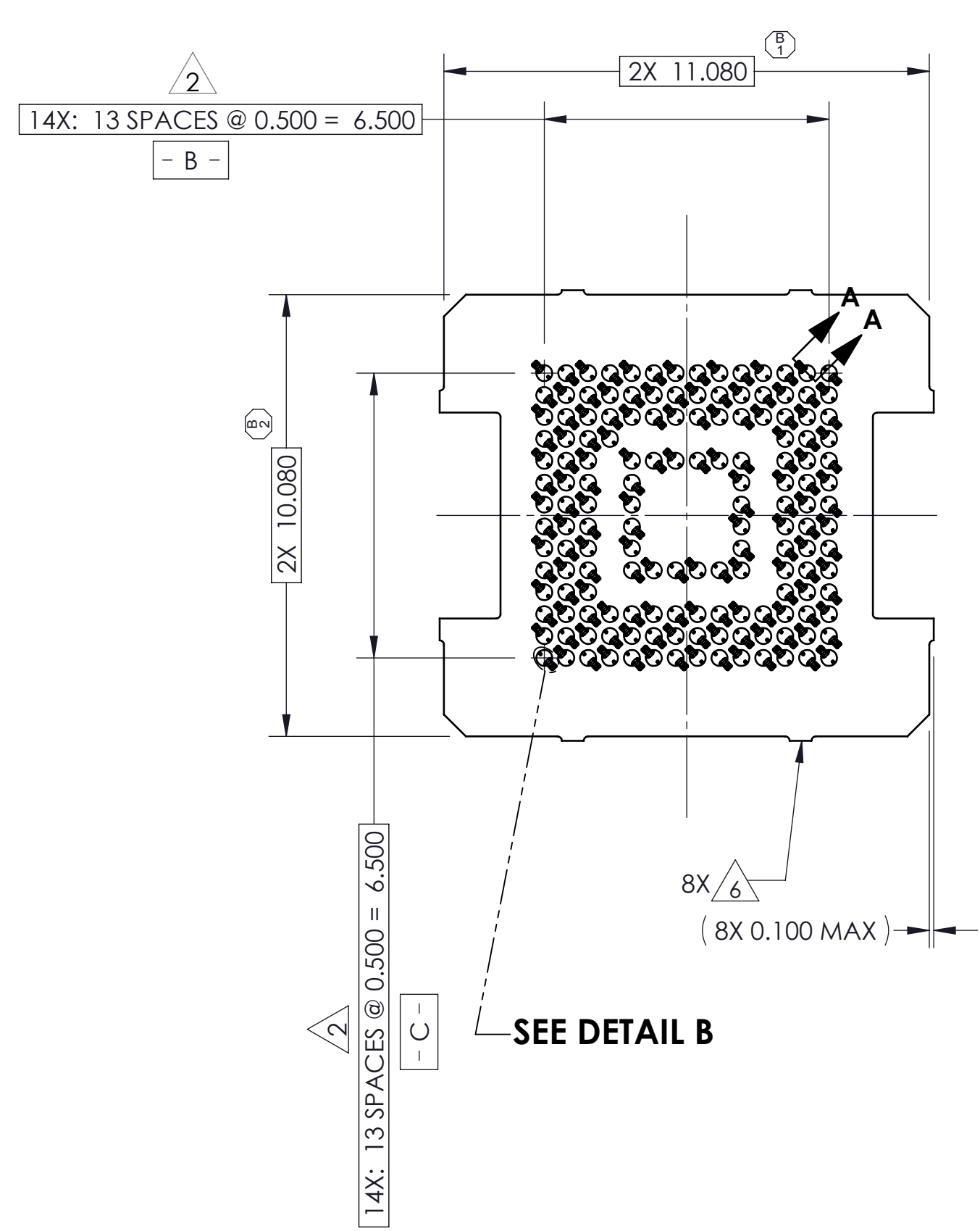
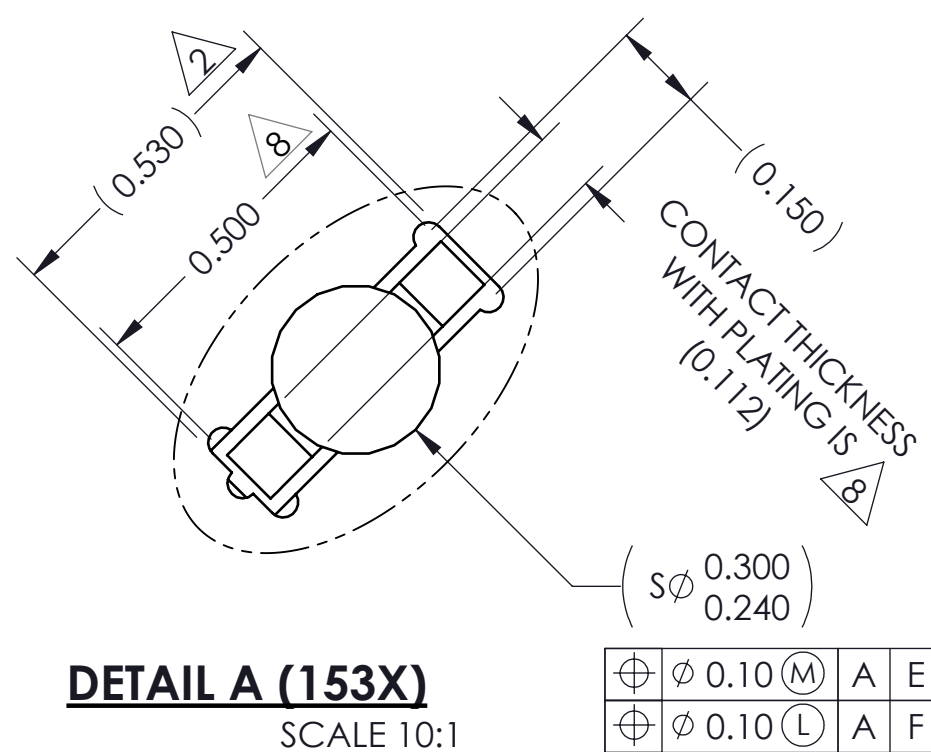
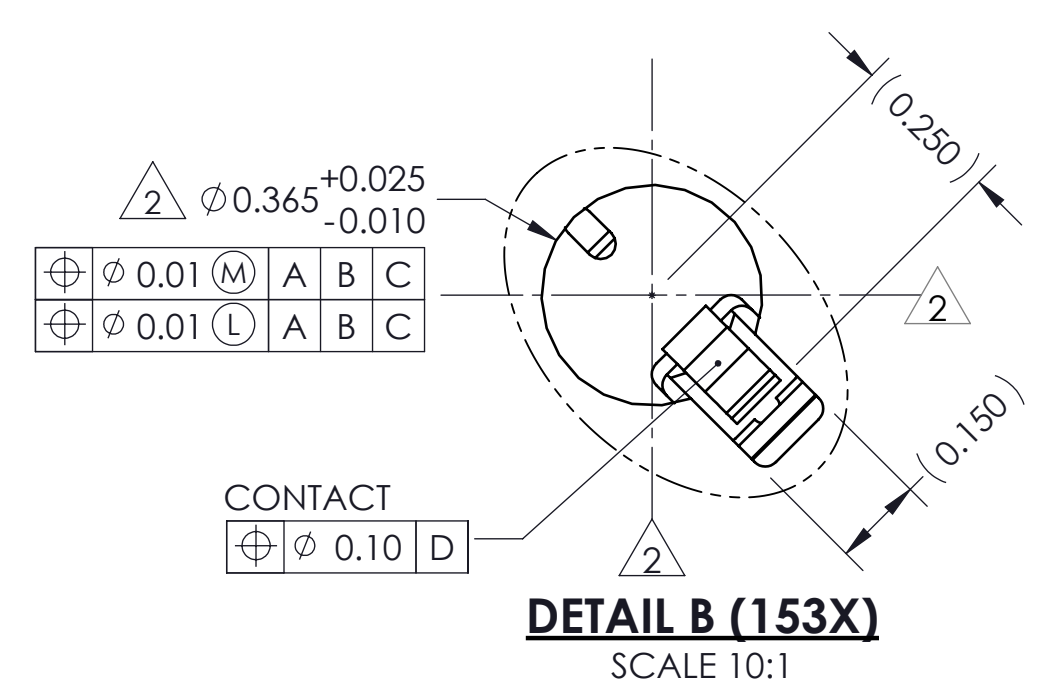
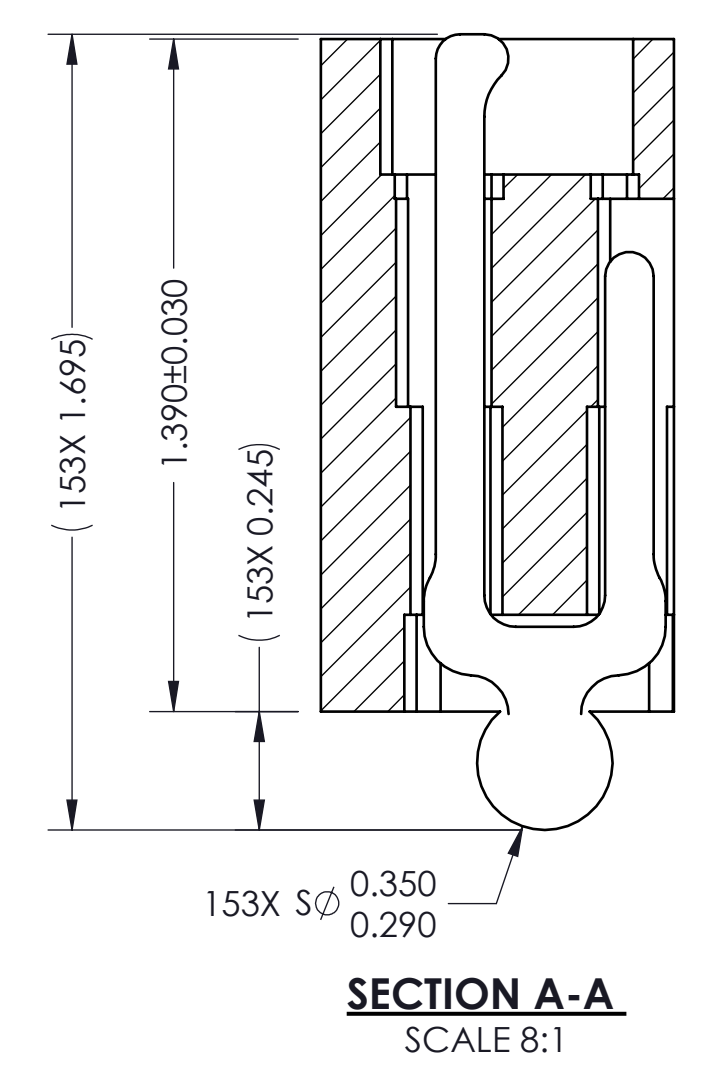


REV	ECO	BY	DESCRIPTION	APV	DATE
A	31599	RS	Initial Design	NSJ	02/10/15



- Notes:
- Reference HSIO Technologies specification 103862-0004 for solder attachment.
 - Dimension locates center of contact/ slot.
 - Reference HSIO Technologies specification 103863-0001 for application notes.
 - Footprint part number is 104311-0352.
 - Datums - B - and - C - are determined by $\phi 0.365$ features on corner slots.
 - Tooling marks permitted. Maximum 0.10 protrusion (shown).
 - E - Center of ball pattern.
 - F - Center of contact.



Parts List	
Part Number	Description
107248-0045	CS, 153G4010X11-0.50
103864-0054	PRESS, DEVICE INSERT, GRYP 10 X 11 (SOLD SEPARATELY)
105900-0004	EXTRACTION TOOL, 4 X 53 (SOLD SEPARATELY)
104553-0275	STEN FLEX, 153G4010X11-0.50 (SOLD SEPARATELY)

HSIO technologies
PROPRIETARY AND CONFIDENTIAL

THE INFORMATION CONTAINED IN THIS DRAWING IS THE SOLE PROPERTY OF HSIO TECHNOLOGIES, LLC. ANY REPRODUCTION IN PART OR AS A WHOLE WITHOUT THE WRITTEN PERMISSION OF HSIO TECHNOLOGIES, LLC IS PROHIBITED.

UNLESS OTHERWISE SPECIFIED:
DIMENSIONS ARE IN MILLIMETERS
TOLERANCES:
ANGULAR: ± 1°
X.X ± 0.25
X.XX ± 0.10
X.XXX ± 0.050

INTERPRET GEOMETRIC TOLERANCING PER:
MATERIAL: SEE BOM
FINISH:
DO NOT SCALE DRAWING

NAME	DATE
RS	02/10/15
CHECKED	NSJ
02/10/15	

LEGEND:
 △ NOTE CALLOUT
 □ REVISION CHANGE
 ○ ITEM NUMBER

HSIO TECHNOLOGIES, LLC.
13300 67th AVENUE NORTH
MAPLE GROVE, MINNESOTA 55311
763-447-6260

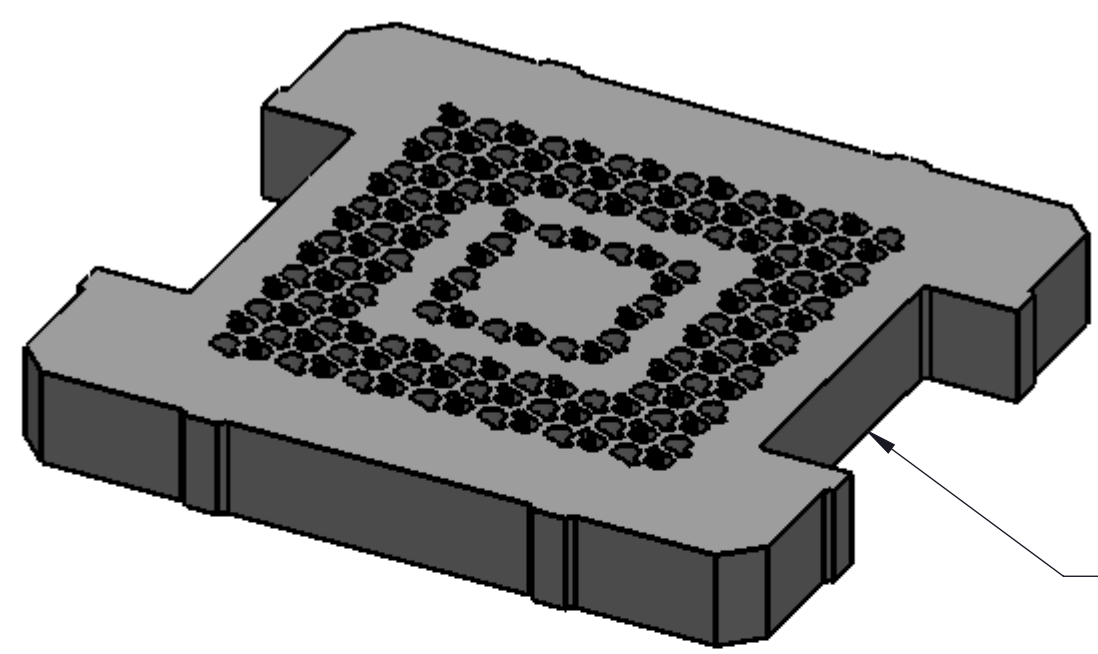
TITLE:
SCKT, 153G4010X11-0.50, EUT

DWG. NO. **108387-0068** REV **A**

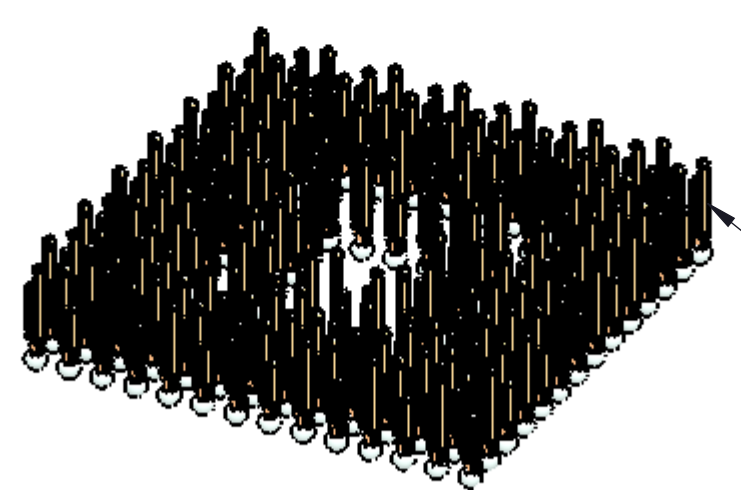
SCALE: 10:1 SIZE: C SHEET 1 OF 2

SOCKET FOR DEVICES THAT ARE WITHIN THESE SPECIFICATIONS					
Lead Count	N	153	Package Size	D	10.00
Columns	ND	14		E	11.00
Rows	NE	14	Ball Spacing	D1	6.500
Pitch	e	0.50		E1	6.500
Ball Size	b	0.30±0.05	Encapsulant/ Top Size	D2	n/a
Total Thickness	A	n/a		E2	n/a
Ball Height	A1	0.225 min.	Pattern Style	IRREGULAR*	
Substrate Thickness	A2	n/a	Perimeter Rows	3	
Top Thickness	A3		Center Array	n/a	
Form Tolerances					
Edge	aaa	0.10	Bottom	ddd	0.08
Substrate	bbb	0.10	Position	eee	0.15
top	ccc	0.10	Position	fff	0.05

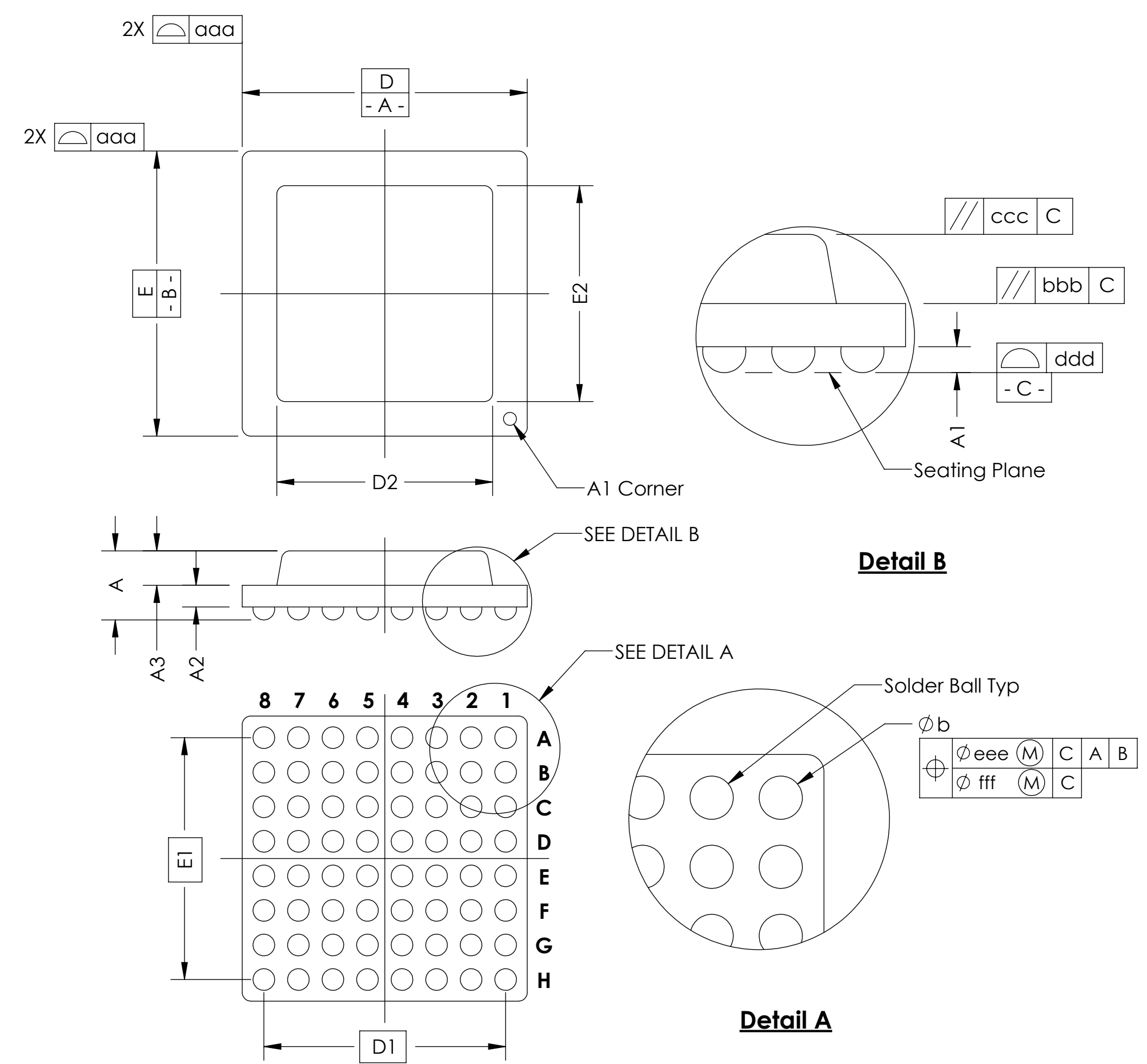
All dimensions are in millimeters.
* See footprint for pattern details.



HOUSING
107247-0045



153X CONTACT
104468-0015



Generic Representation with Full Grid Array

PROPRIETARY AND CONFIDENTIAL
THE INFORMATION CONTAINED IN THIS DRAWING IS THE SOLE PROPERTY OF HSIO TECHNOLOGIES, LLC. ANY REPRODUCTION IN PART OR AS A WHOLE WITHOUT THE WRITTEN PERMISSION OF HSIO TECHNOLOGIES, LLC IS PROHIBITED.

UNLESS OTHERWISE SPECIFIED:	NAME	DATE	HSIO TECHNOLOGIES, LLC. 13300 67th AVENUE NORTH MAPLE GROVE, MINNESOTA 55311 763-447-6260	
DIMENSIONS ARE IN MILLIMETERS	DRAWN	RS		02/10/15
TOLERANCES: ANGULAR: ± 1° X.X ±0.25 X.XX ±0.10 X.XXX ±0.050	CHECKED	NSJ		02/10/15

LEGEND:
 △ NOTE CALLOUT
 ◻ REVISION CHANGE
 ○ ITEM NUMBER

HSIO technologies

TITLE: SCKT, 153G4010X11-0.50, EUT	
DWG. NO. 108387-0068	REV A
SCALE: 5:1	SIZE: C SHEET 2 OF 2