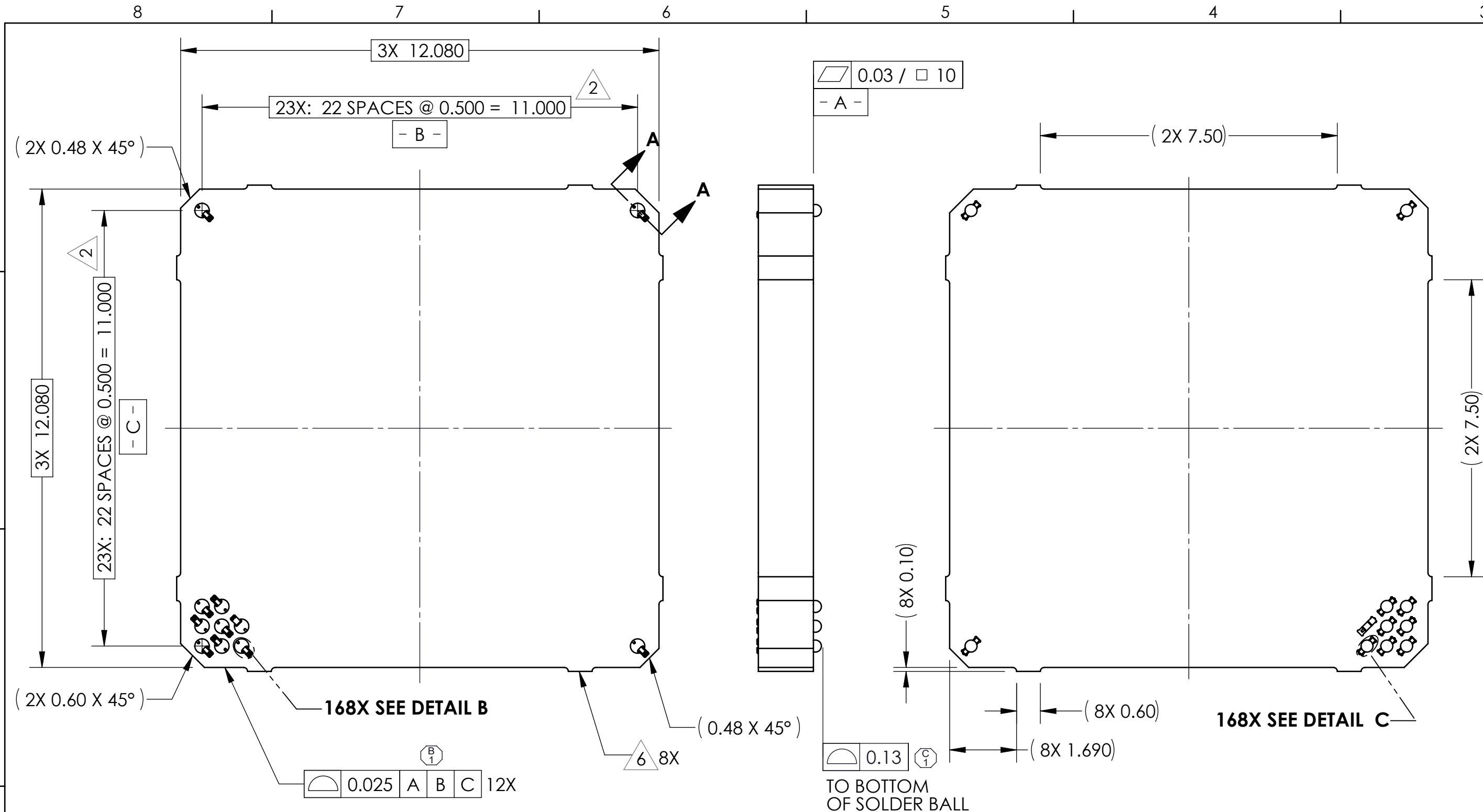
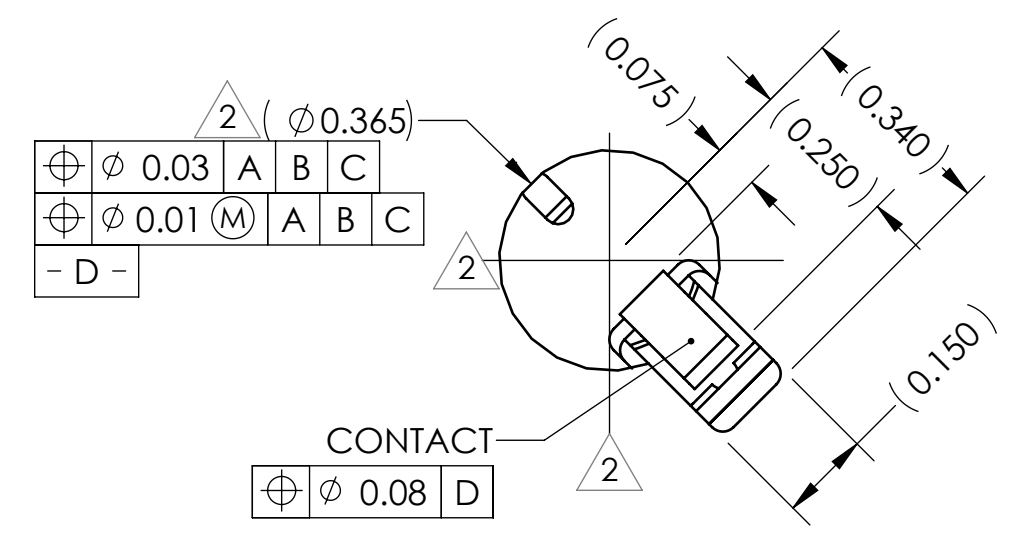


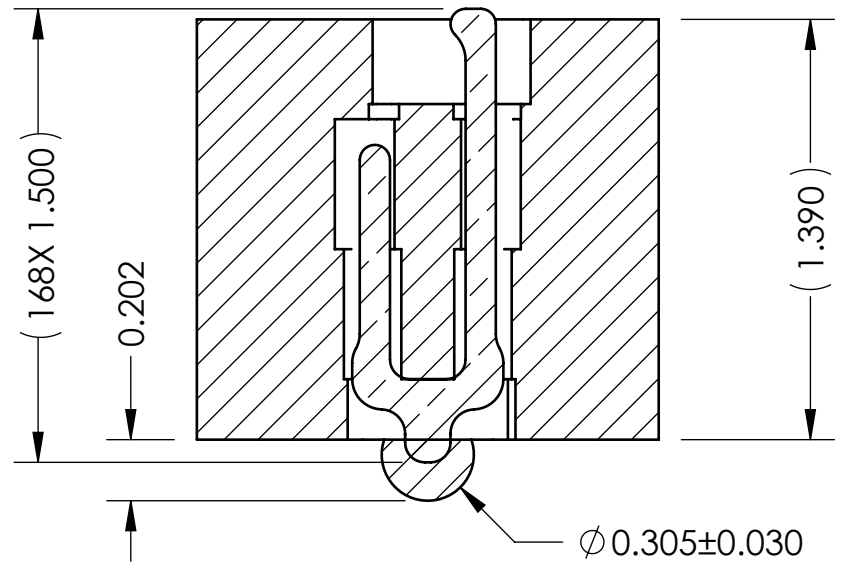
REV	ECO	BY	DESCRIPTION	APV	DATE
A	7138	DP	INITIAL DESIGN	RS	11/04/09



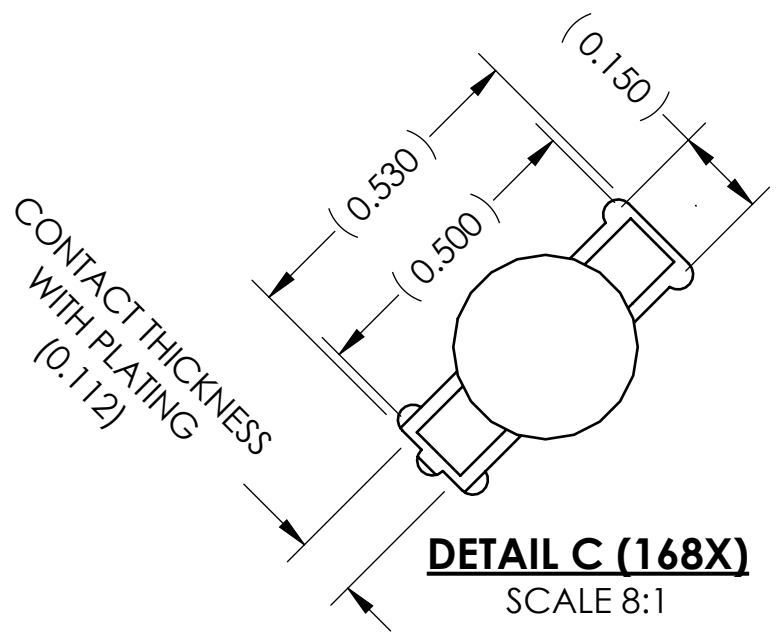
- NOTES:
- REFERENCE IRONWOOD ELECTRONICS SPECIFICATION 103862-0001 FOR SOLDER ATTACHMENT.
 - DIMENSION LOCATES CENTER OF CONTACT/ SLOT.
 - REFERENCE IRONWOOD ELECTRONICS SPECIFICATION 103863-0001 FOR APPLICATION NOTES.
 - FOOTPRINT PART NUMBER IS 104311-0150.
 - DATUMS B AND C ARE DETERMINED BY $\varnothing 0.365$ FEATURES ON CORNER SLOTS.
 - TOOLING MARKS PERMITTED. MAXIMUM 0.10 PROTRUSION (SHOWN).



DETAIL B (168X)
SCALE 8:1



SECTION A-A
SCALE 4:1



DETAIL C (168X)
SCALE 8:1

Parts List			
Item	Qty	Part Number	Description
-	-	107250-0001	SCKT, 168G40 12-0.50
-	-	103864-0002	PRESS, DEVICE INSERT, GRYP 12X12 (SOLD SEPARATELY)
-	-	105900-0004	EXTRACTION TOOL, 4 X 53 (SOLD SEPARATELY)
1	1	107249-0001	CS, 168G40 12-0.50 W/SOLDER BALLS
1.1	1	107247-0001	HSG, 168G40 12-0.50
1.2	168	104468-0015	CONTACT, G40, $\varnothing 0.30$, TIN, 0.1016

UNLESS OTHERWISE SPECIFIED - DIMENSIONS ARE IN MILLIMETERS - DIMS APPLY AFTER PLATING - TOLERANCES UNLESS OTHERWISE NOTED:

ANGLES ±1° DECIMALS
X.X ±0.25
X.XX ±0.10
X.XXX ±0.050

THE INFORMATION CONTAINED IN THIS DRAWING IS THE SOLE PROPERTY OF IRONWOOD ELECTRONICS, INC. ANY REPRODUCTION IN PART OR WHOLE WITHOUT THE WRITTEN PERMISSION OF IRONWOOD ELECTRONICS, INC. IS PROHIBITED.

CAD GENERATED DRAWING DO NOT MANUALLY UPDATE

1335 EAGANDALE CT.
EAGAN, MN 55121
(952) 229-8200

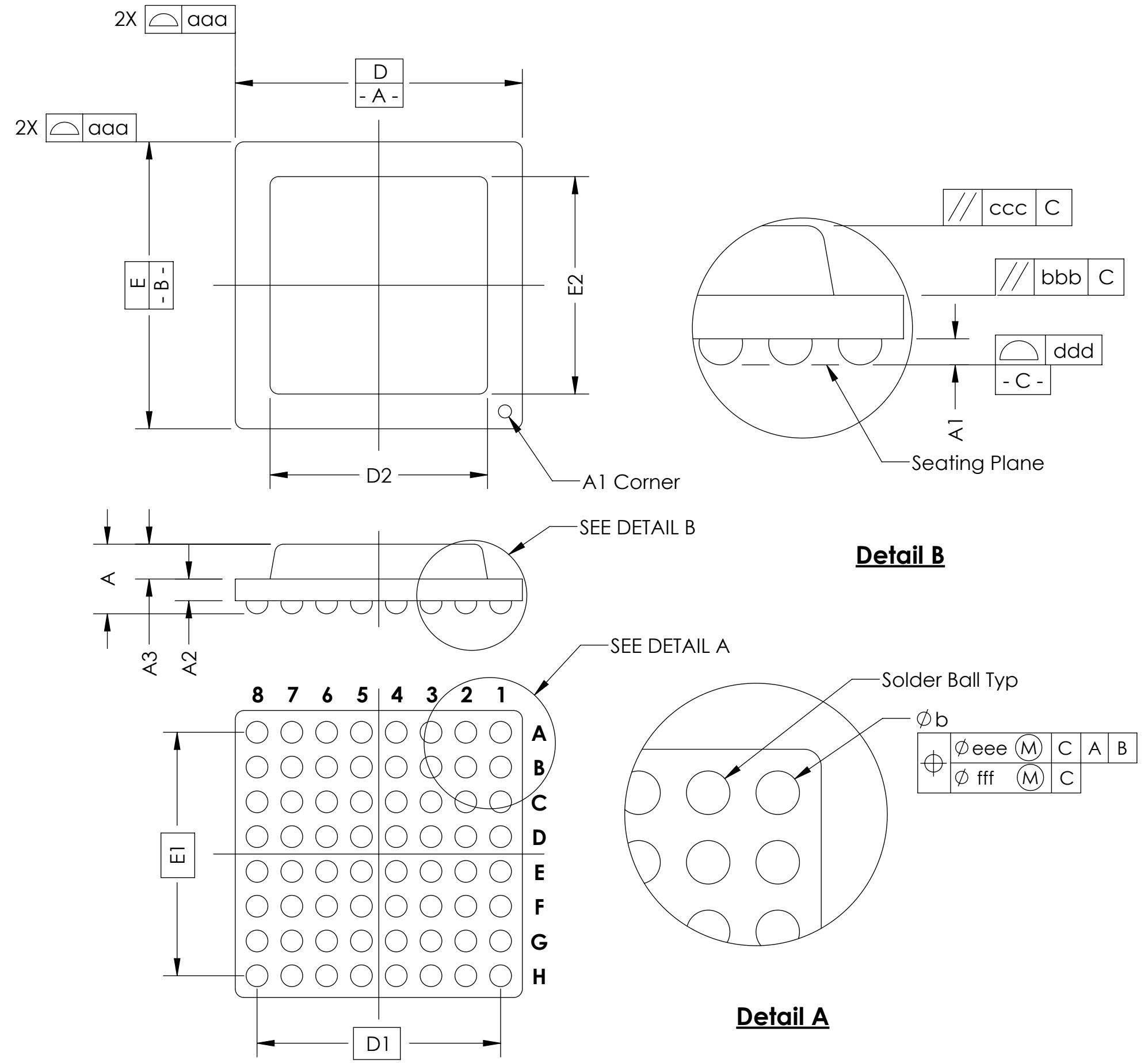
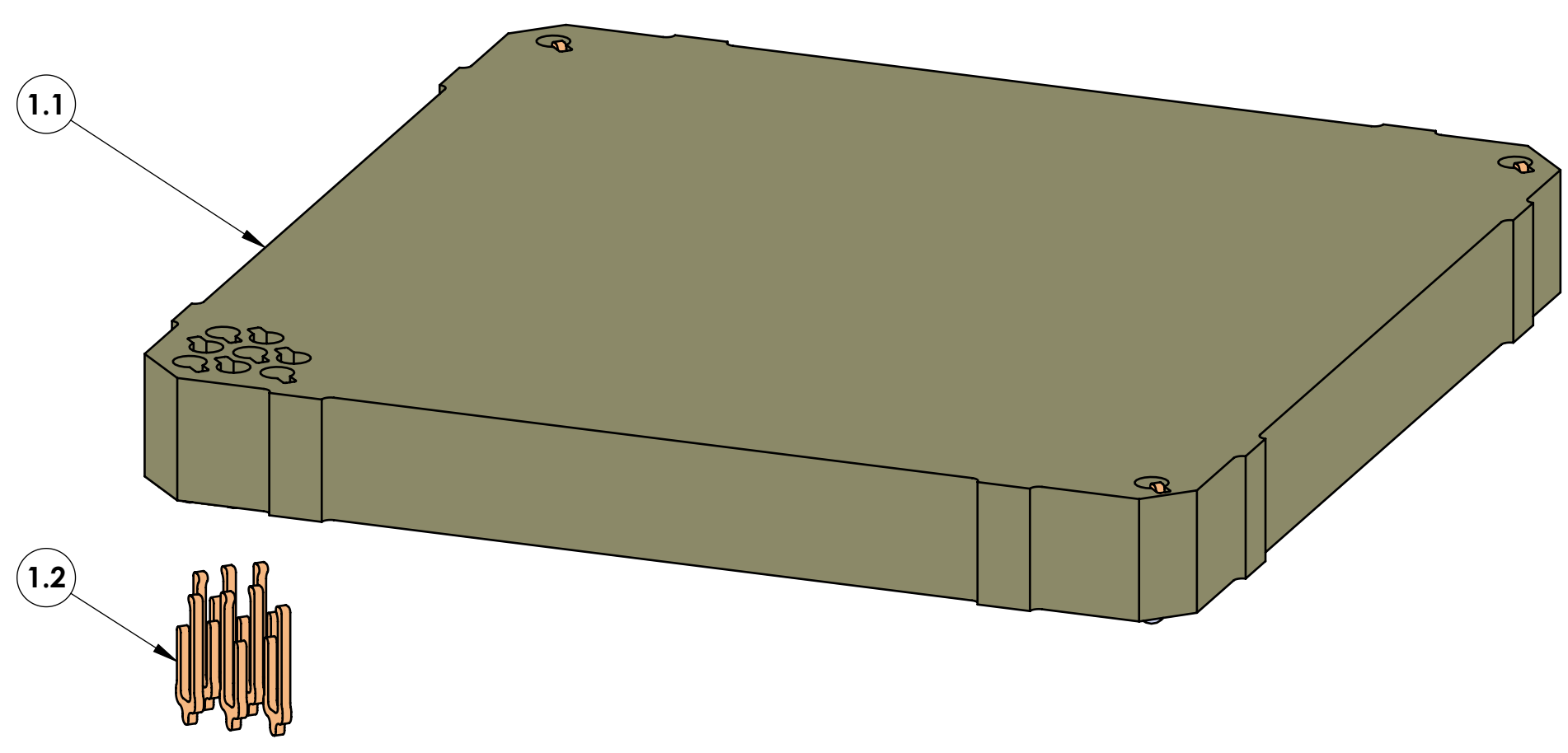
SCKT, 168G40 12.0X12.0-0.50, EUT

DRAWN: DJP	DATE: 8/23/22		A
APPVD: RS	DATE: 8/23/22		
THIRD ANGLE PROJECTION		SCALE: C	CAD FORMAT: SOLIDWORKS
		DRAWING NO.: 108387-0072	SHEET: 1 of 2
		MATERIAL: SEE BOM	

LEGEND:
△ NOTE CALLOUT
ⓐ REVISION CHANGE
Ⓧ ITEM NUMBER

SOCKET FOR DEVICES THAT ARE WITHIN THESE SPECIFICATIONS					
Lead Count	N	168	Package Size	D	12.00
Columns	ND	23		E	12.00
Rows	NE	23	Ball Spacing	D1	11.000
Pitch	e	0.50		E1	11.000
Ball Size	b	0.30±0.05	Encapsulant/ Top Size	D2	n/a
Total Thickness	A	n/a		E2	n/a
Ball Height	A1	0.225 MIN	Pattern Style	Perimeter*	
Substrate Thickness	A2	n/a	Perimeter Rows	2	
Top Thickness	A3		Center Array	n/a	
Form Tolerances					
Edge	aaa	0.10	Bottom	ddd	0.08
Substrate	bbb	0.10	Position	eee	0.15
top	ccc	0.10	Position	fff	0.05

All dimensions are in millimeters.
* See footprint for pattern details.



Generic Representation with Full Grid Array

<small>THE INFORMATION CONTAINED IN THIS DRAWING IS THE SOLE PROPERTY OF IRONWOOD ELECTRONICS, INC. ANY REPRODUCTION IN PART OR WHOLE WITHOUT THE WRITTEN PERMISSION OF IRONWOOD ELECTRONICS, INC. IS PROHIBITED.</small>			
<small>UNLESS OTHERWISE SPECIFIED - DIMENSIONS ARE IN MILLIMETERS - DIM'S APPLY AFTER PLATING TOLERANCES UNLESS OTHERWISE NOTED: DECIMALS ANGLES X.X ±0.25 ±1° X.XX ±0.10 X.XXX ±0.050</small>		1335 EAGANDALE CT. EAGAN, MN 55121 (952) 229-8200	
SCKT, 168G40 12.0X12.0-0.50, EUT			
<small>LEGEND: X NOTE CALLOUT A REVISION CHANGE X ITEM NUMBER</small>	<small>SIZE C</small> <small>CAD FORMAT SOLIDWORKS</small> <small>SCALE</small>	<small>DRAWING NO. 108387-0072</small> <small>MATERIAL</small>	<small>REV. A</small> <small>See Page 1</small> <small>SHEET 2 of 2</small>