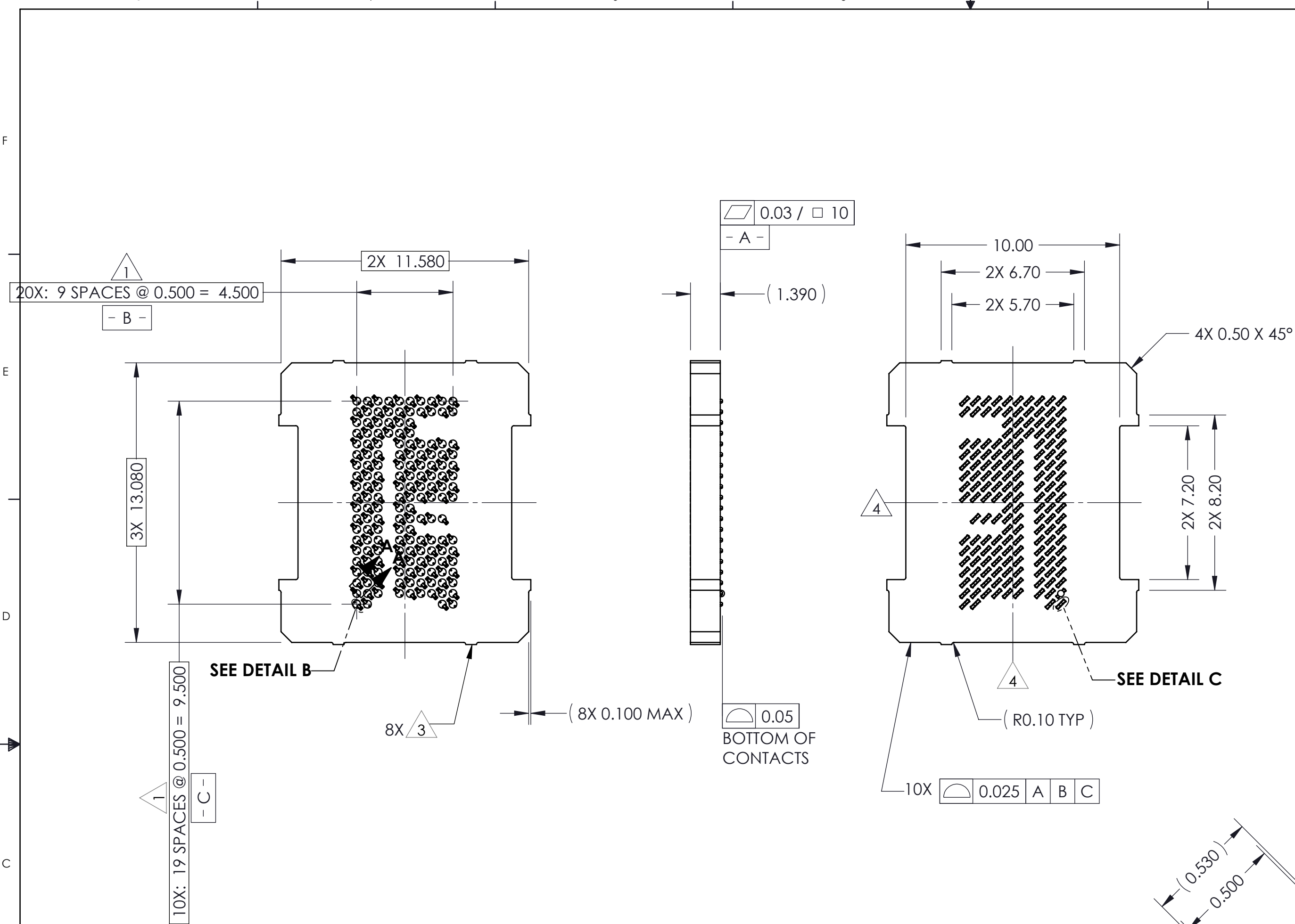
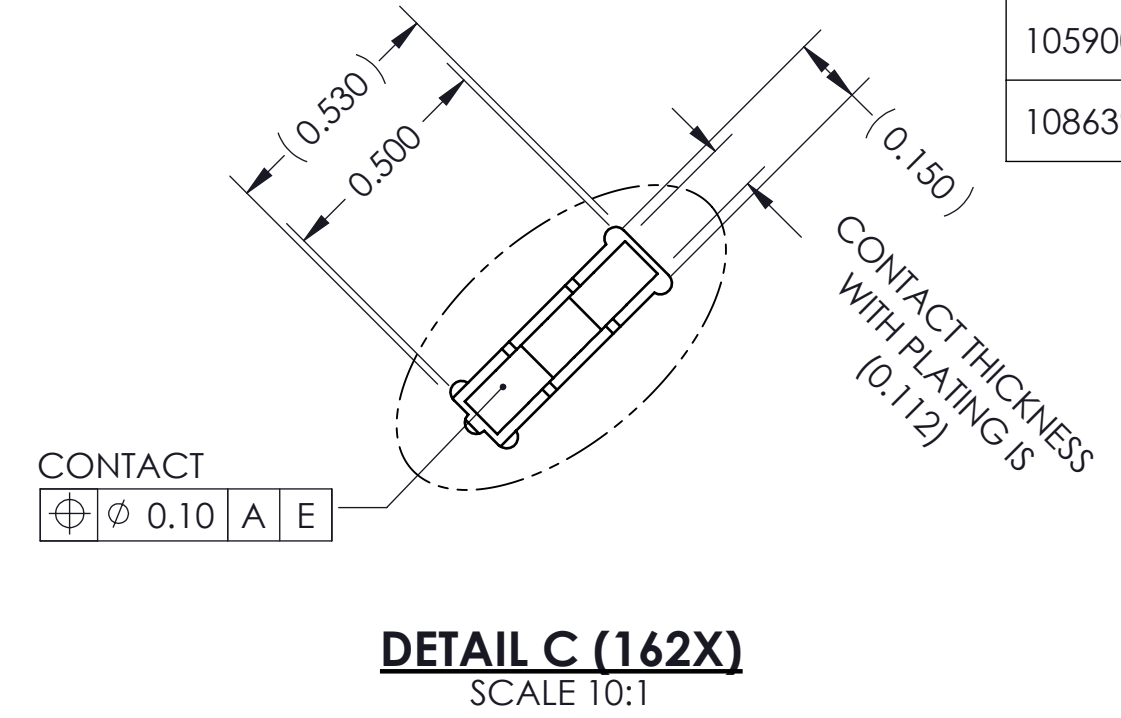
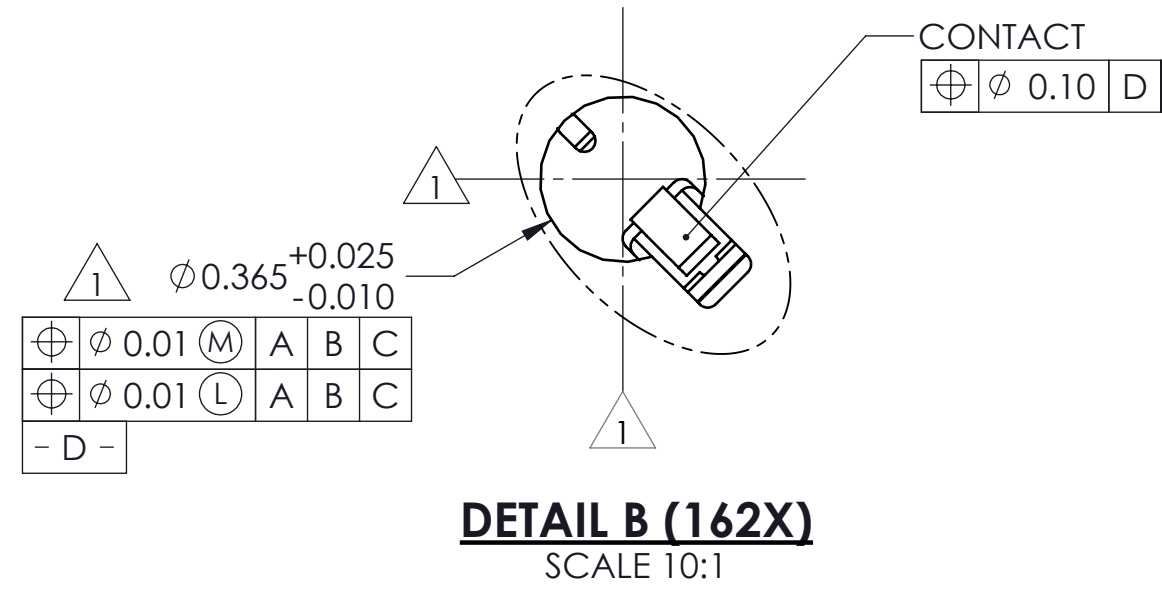
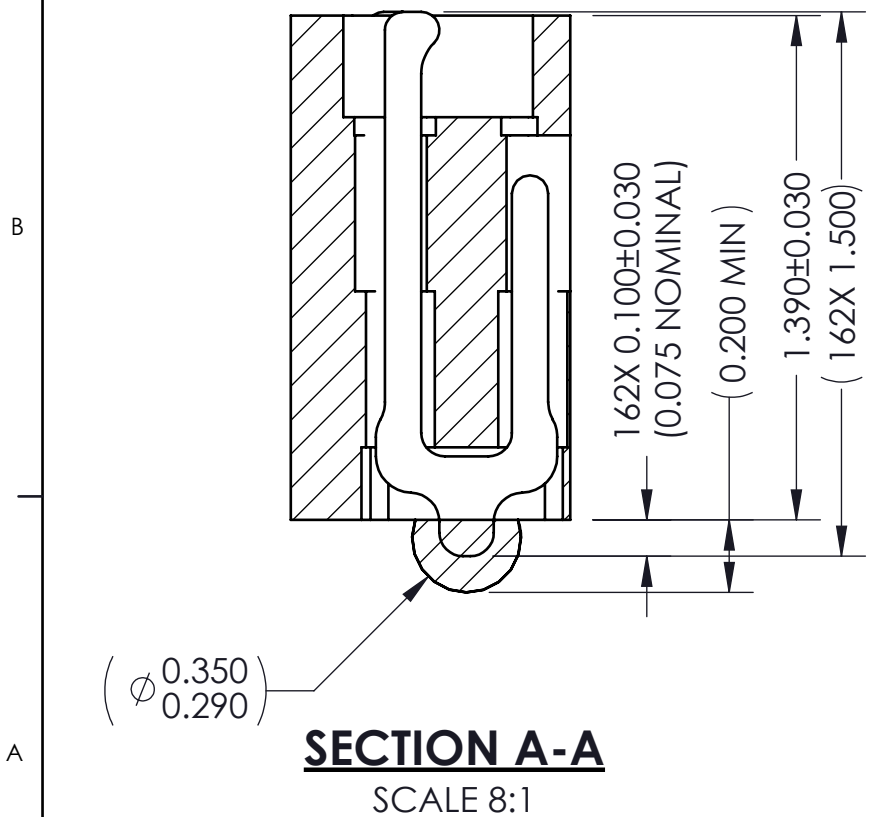


REV	ECO	BY	DESCRIPTION	APV	DATE
A	31630	RS	Initial Design	NSJ	04/08/15



- Notes:
1. Dimension locates center of contact slot.
 2. Datums - B - and - C - are determined by $\phi 0.365$ openings in corner slots.
 3. Toolin marks permitted. Maximum 0.10 protrusion (shown).
 4. - E - Center of contact pattern.

PART NUMBER	DESCRIPTION
103864-0128	PRESS DEVICE INSERT, 11.5X13.0 (SOLD SEPARATELY)
105900-0004	EXTRACTION TOOL, 4 X 53 (SOLD SEPARATELY)
108639-0003	ALIGNMENT, FRAME, G40 11.5X13.0 (SOLD SEPARATELY)



<p>HSIO technologies</p> <p>PROPRIETARY AND CONFIDENTIAL</p> <p>THE INFORMATION CONTAINED IN THIS DRAWING IS THE SOLE PROPERTY OF HSIO TECHNOLOGIES, LLC. ANY REPRODUCTION IN PART OR AS A WHOLE WITHOUT THE WRITTEN PERMISSION OF HSIO TECHNOLOGIES, LLC IS PROHIBITED.</p>	UNLESS OTHERWISE SPECIFIED:	NAME	DATE	HSIO TECHNOLOGIES, LLC. 13300 67th AVENUE NORTH MAPLE GROVE, MINNESOTA 55311 763-447-6260	
	DIMENSIONS ARE IN MILLIMETERS	DRAWN	RS		04/08/15
	TOLERANCES:	CHECKED	NSJ	04/08/15	TITLE: SCKT, 162G40 11.5X13-0.50, EUTECTIC
	ANGULAR: $\pm 1^\circ$	LEGEND:		DWG. NO. 108387-0080	
X.X ± 0.25	\triangle NOTE CALLOUT	REV	A		
X.XX ± 0.10	\square REVISION CHANGE	SCALE: 5:1	SIZE: C	SHEET 1 OF 2	
X.XXX ± 0.050	\circ ITEM NUMBER				
DO NOT SCALE DRAWING					

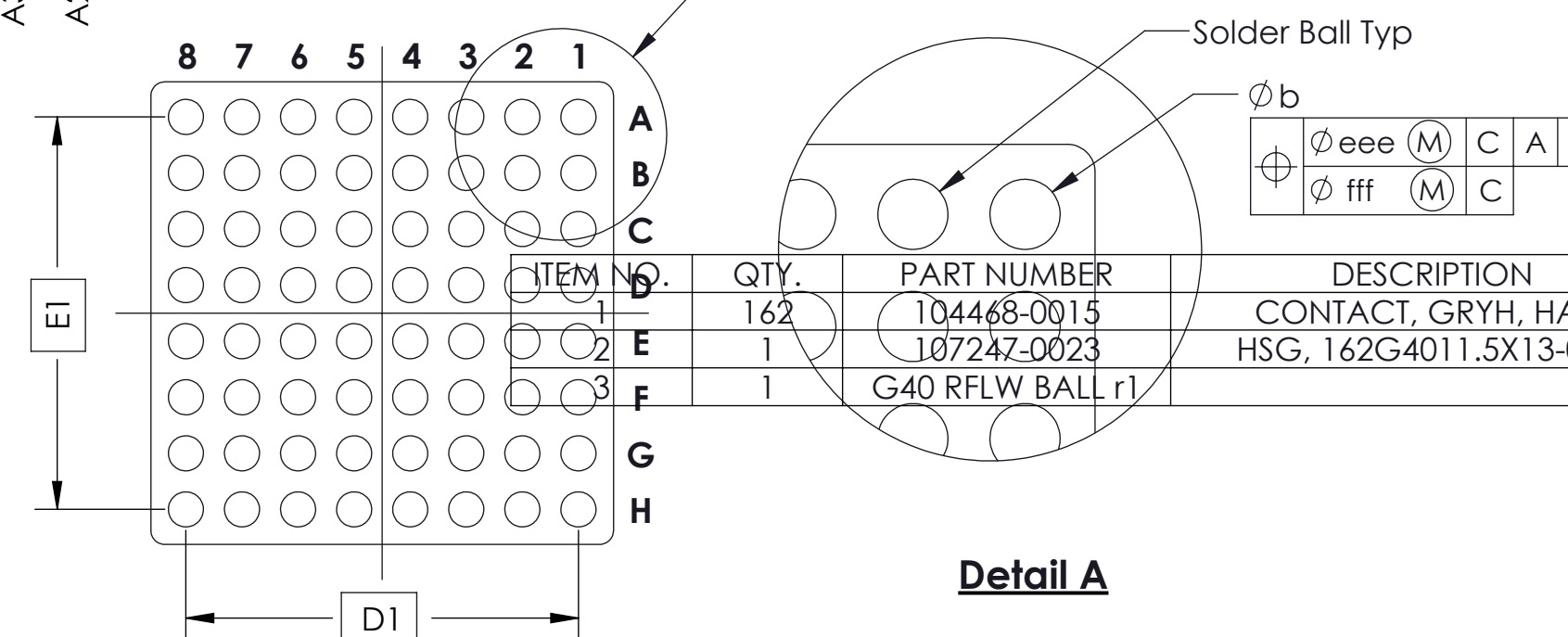
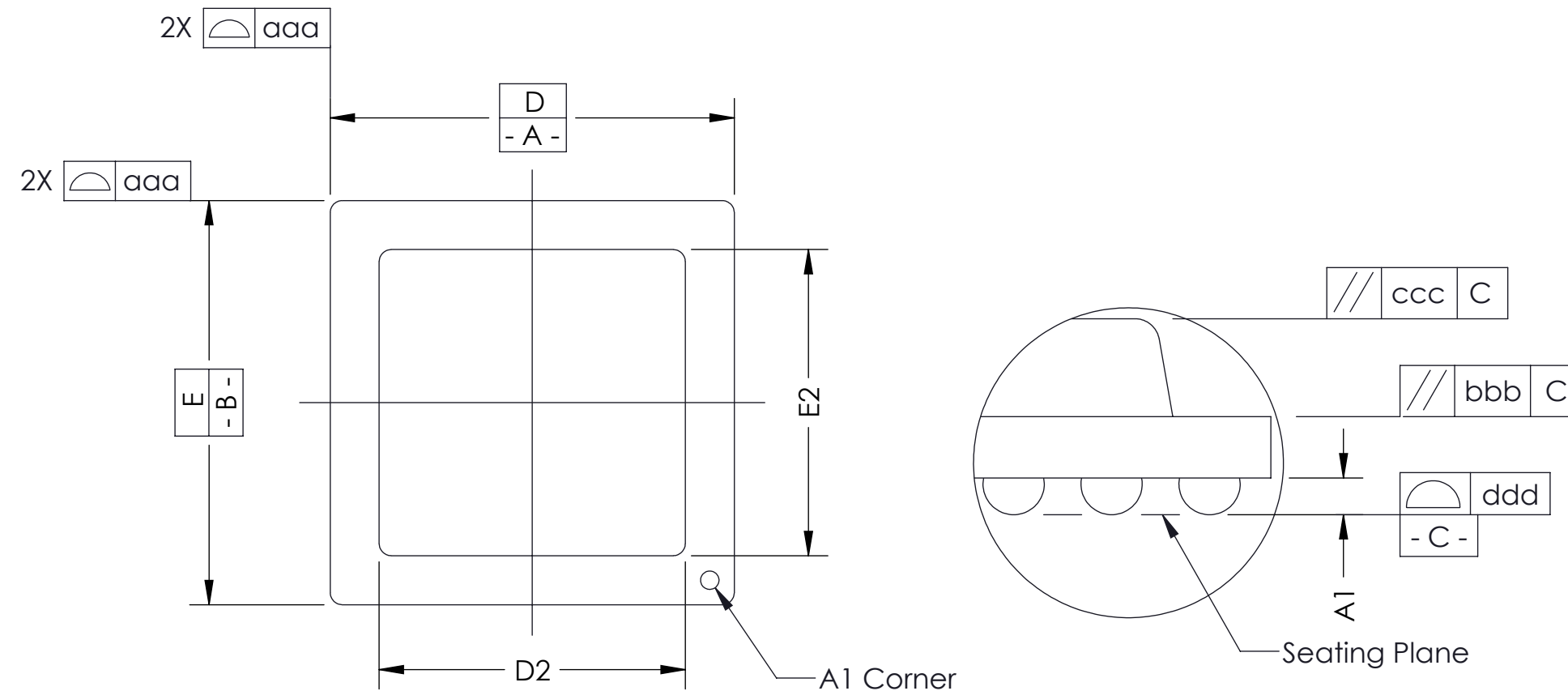
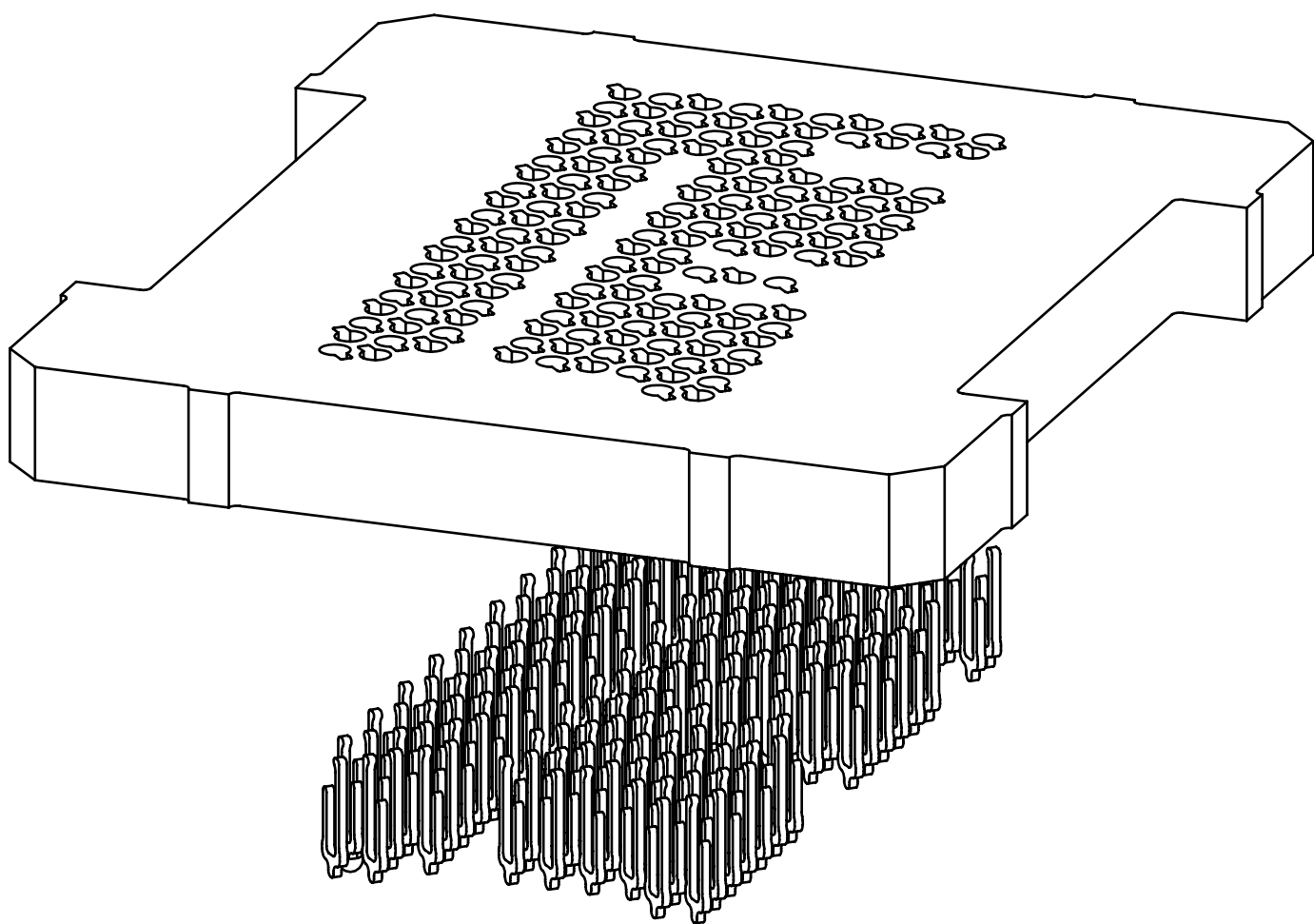
SOCKET FOR DEVICES THAT ARE WITHIN THESE SPECIFICATIONS

Lead Count	N	162	Package Size	D	11.50
Columns	ND	10		E	13.00
Rows	NE	20	Ball Spacing	D1	4.500
Pitch	e	0.500		E1	9.500
Ball Size	b	0.30±0.05	Encapsulant/ Top Size	D2	N/A
Total Thickness	A	N/A		E2	N/A
Ball Height	A1	0.200 MIN	Pattern Style	IRREGULAR	
Substrate Thickness	A2	N/A	Perimeter Rows	N/A	
Top Thickness	A3		Center Array	N/A	

Form Tolerances

Edge	aaa	0.20	Bottom	ddd	0.15
Substrate	bbb	0.20	Position	eee	0.20
Top	ccc	0.20	Position	fff	0.10

* See footprint for pattern details.
All dimensions are in millimeters.



Generic Representation with Full Grid Array

ITEM NO.	QTY.	PART NUMBER	DESCRIPTION
1	162	104468-0015	CONTACT, GRYH, HALF
2	1	107247-0023	HSG, 162G4011.5X13-0.50
3	1	G40 RFLW BALL r1	

<p>HSIO technologies PROPRIETARY AND CONFIDENTIAL</p> <p>THE INFORMATION CONTAINED IN THIS DRAWING IS THE SOLE PROPERTY OF HSIO TECHNOLOGIES, LLC. ANY REPRODUCTION IN PART OR AS A WHOLE WITHOUT THE WRITTEN PERMISSION OF HSIO TECHNOLOGIES, LLC IS PROHIBITED.</p>	UNLESS OTHERWISE SPECIFIED: DIMENSIONS ARE IN MILLIMETERS TOLERANCES: ANGULAR: ± 1° X.X ±0.25 X.XX ±0.10 X.XXX ±0.050	DRAWN RS 04/08/15	NAME RS	DATE 04/08/15	HSIO TECHNOLOGIES, LLC. 13300 67th AVENUE NORTH MAPLE GROVE, MINNESOTA 55311 763-447-6260	
	INTERPRET GEOMETRIC TOLERANCING PER:	CHECKED NSJ 04/08/15	LEGEND:	TITLE:		
	MATERIAL SEE BOM	DO NOT SCALE DRAWING	△ NOTE CALLOUT	○ REVISION CHANGE	○ ITEM NUMBER	SCKT, 162G40 11.5X13-0.50, EUTECTIC
	FINISH					DWG. NO. 108387-0080
					SCALE: 5:1 SIZE: C SHEET 2 OF 2	