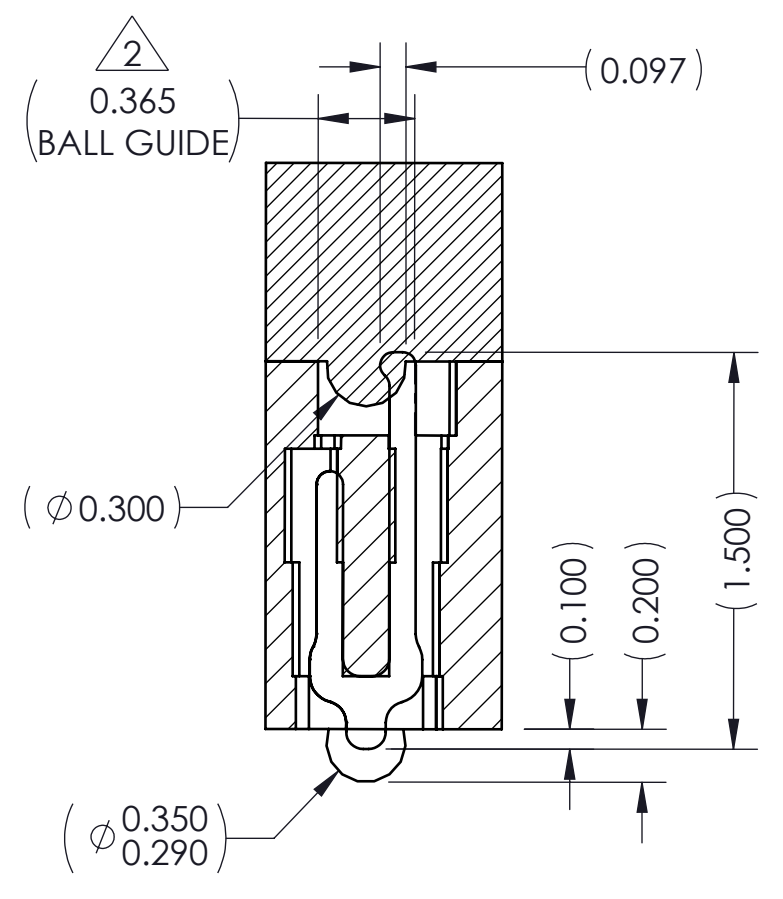
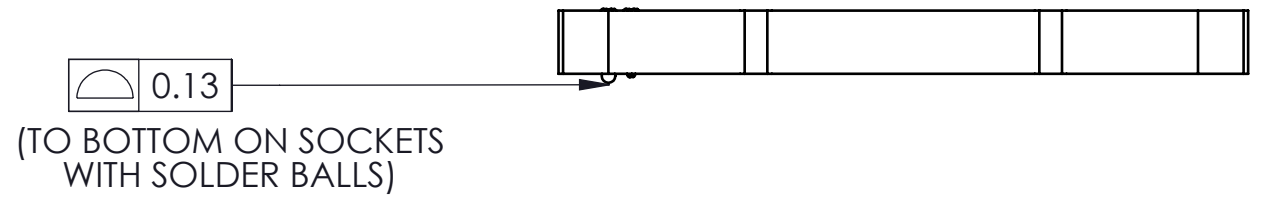
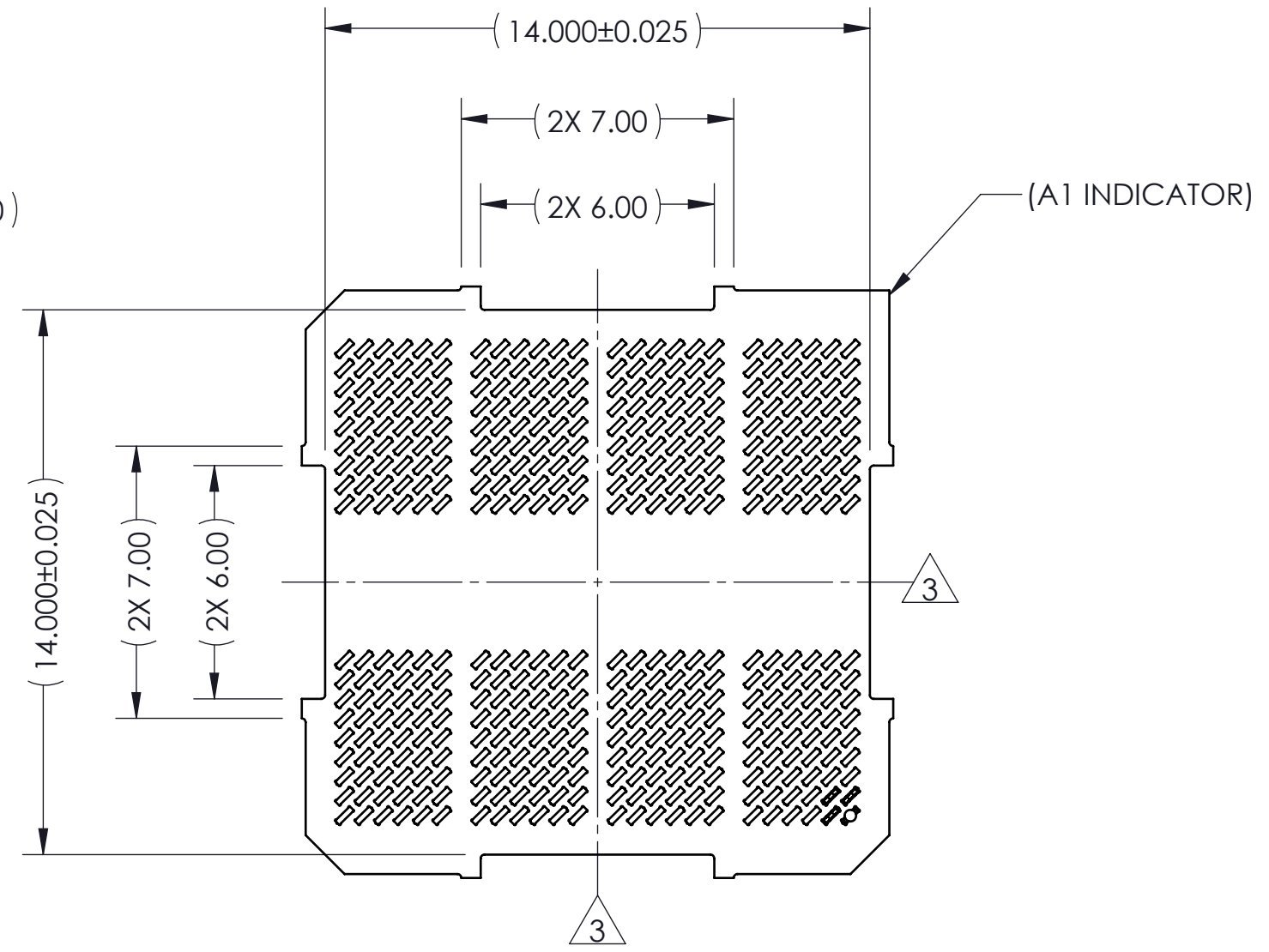
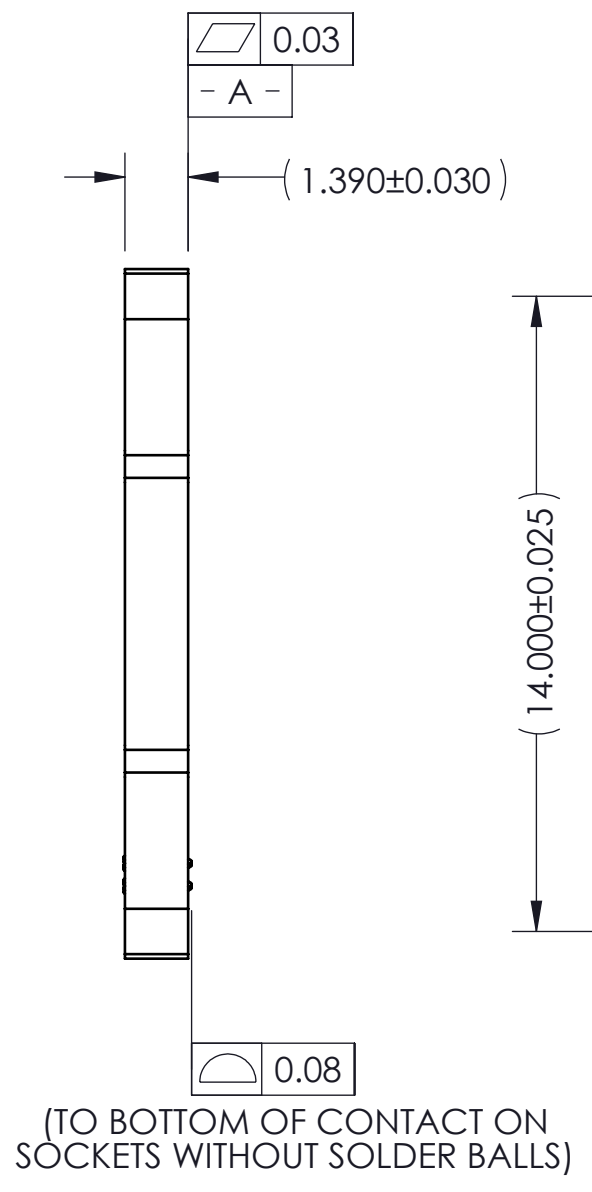
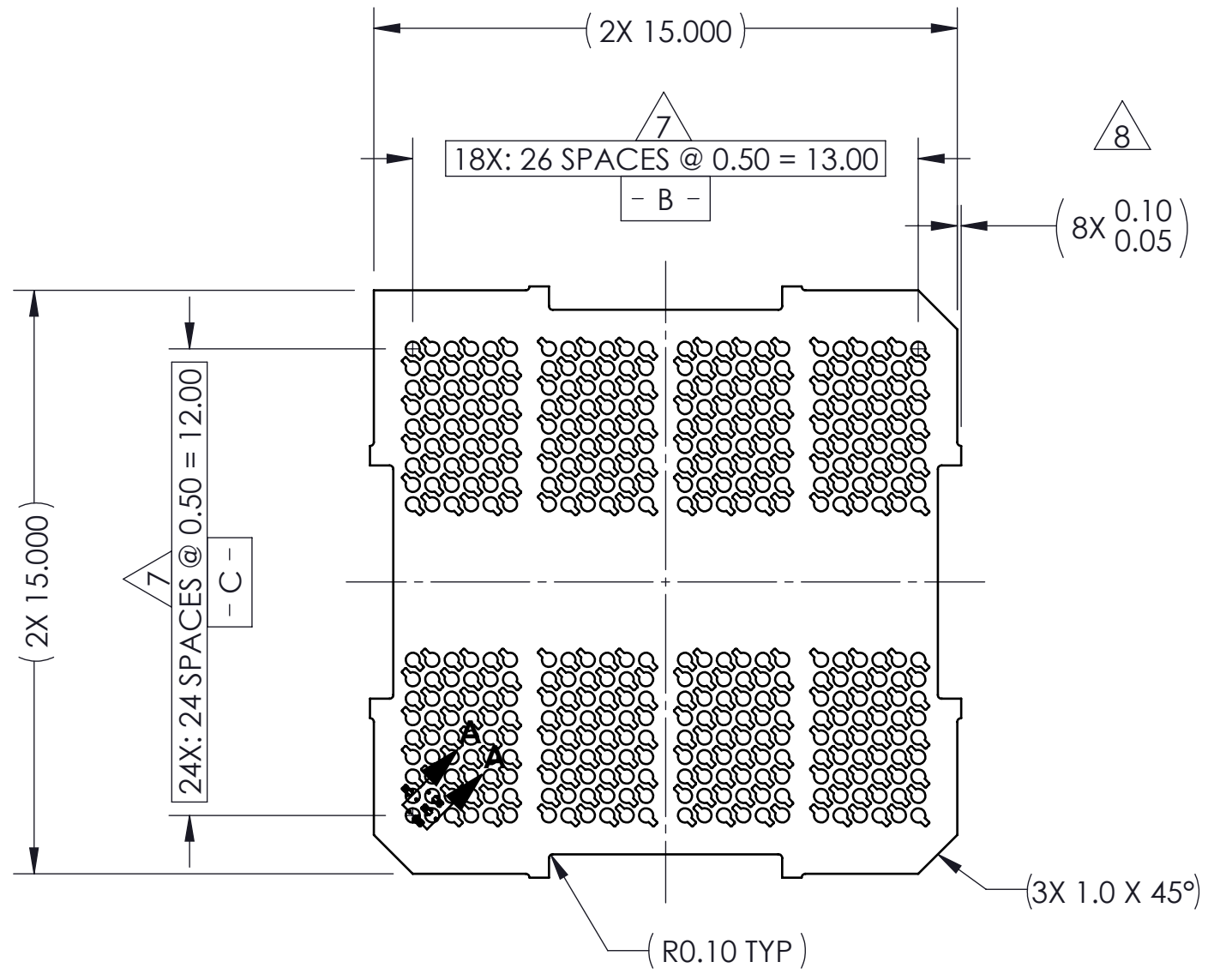


REV	ECO	BY	DESCRIPTION	APV	DATE
A	31784	PAR	INITIAL DESIGN	NSJ	06/02/16



**SECTION A-A**  
SCALE: 30:1

NOTES:

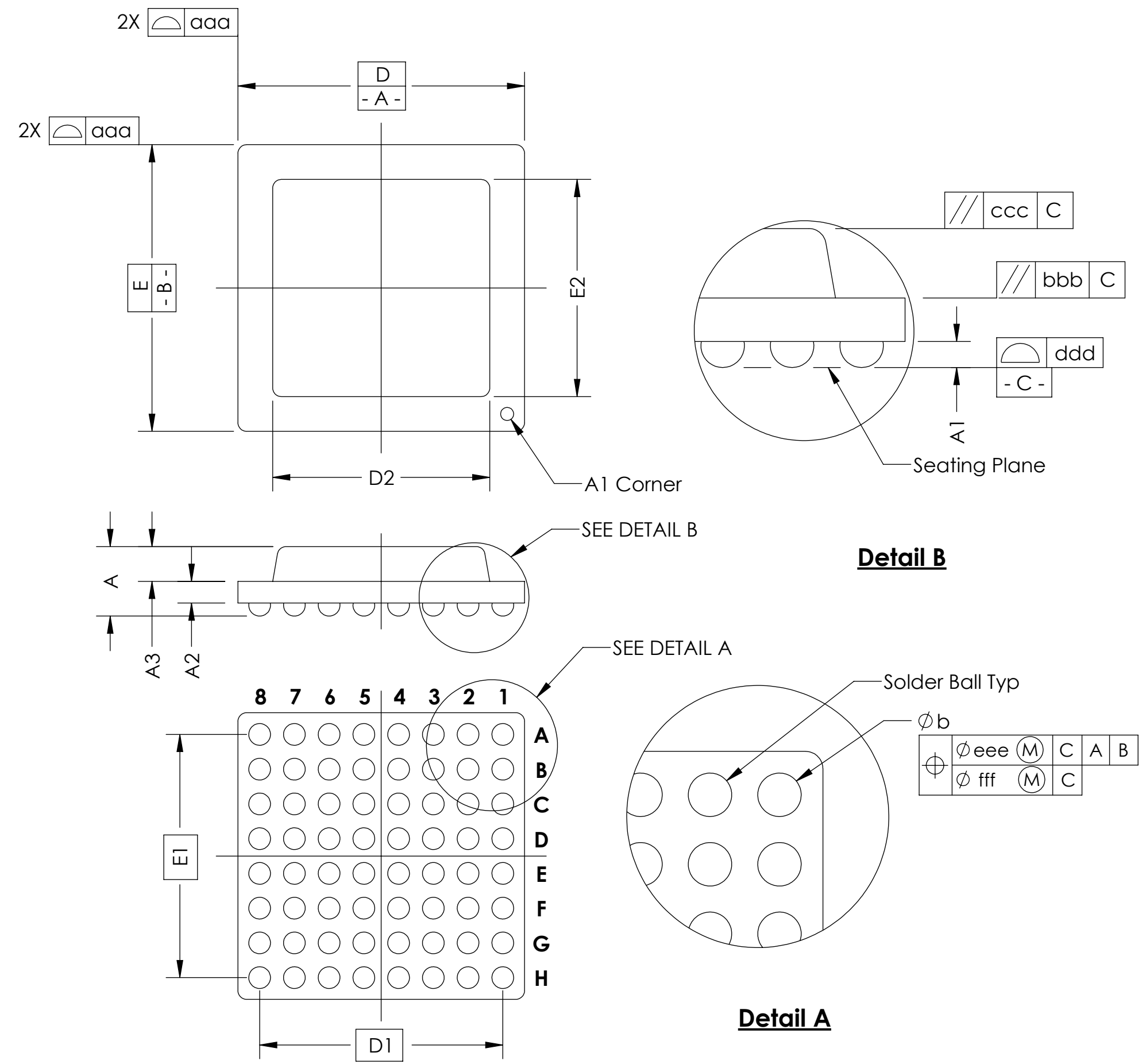
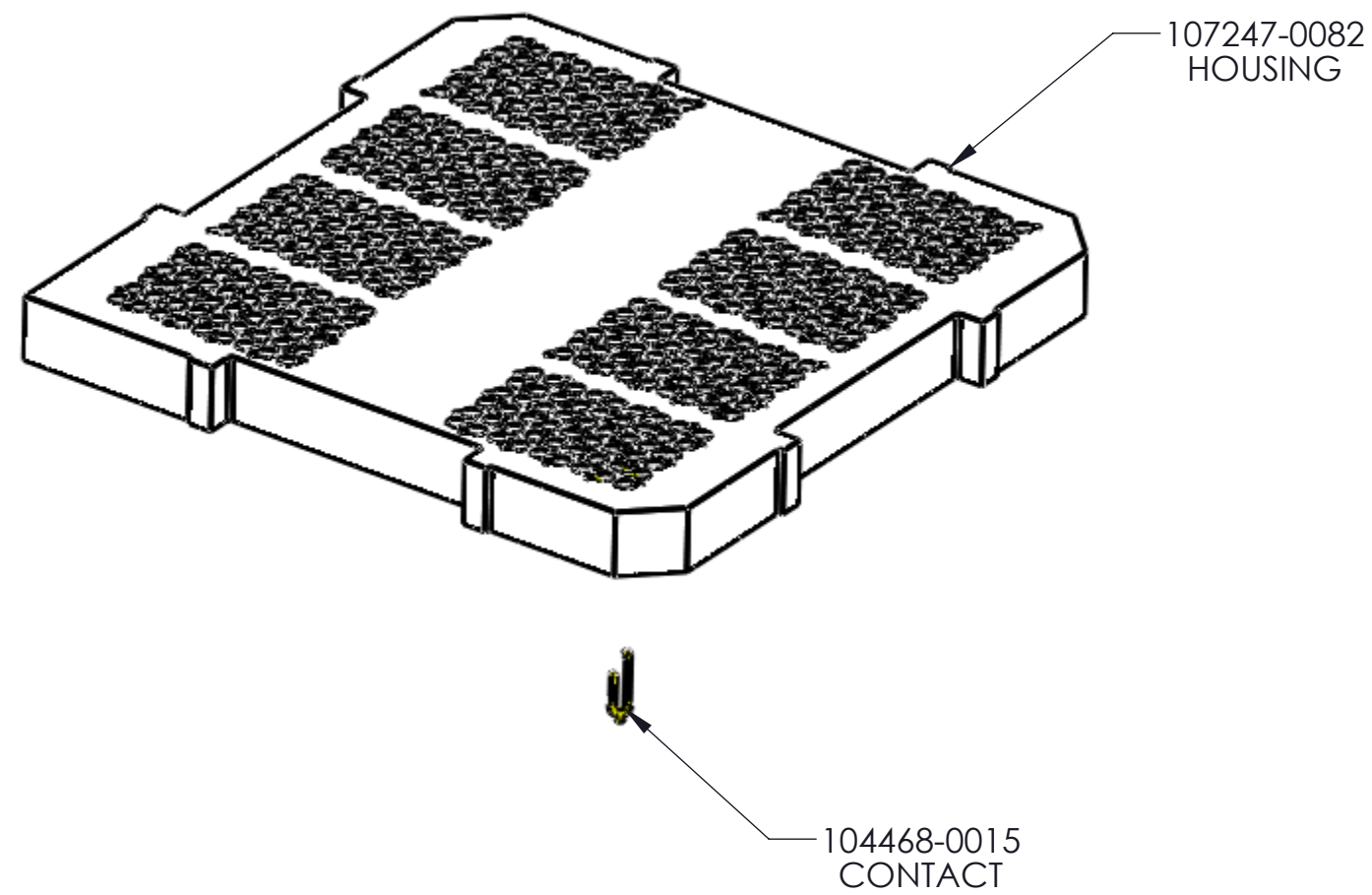
- UNLESS OTHERWISE NOTED, ALL FEATURES LOCATED  $\oplus 0.10$  A B C
- DATUM'S - B - AND - C - ARE DETERMINED BY  $\phi 0.365$  FEATURES ON CORNER SLOTS.
- CENTER OF CONTACT PATTERN.
- REFERENCE HSI0 TECHNOLOGIES SPECIFICATION 700001-0001 FOR SOLDER ATTACHMENT.
- REFERENCE HSI0 TECHNOLOGIES SPECIFICATION 700001-0002 FOR APPLICATION NOTES.
- DIMENSION LOCATES CENTER OF CONTACT/SLOT.
- TOOLING MARKS PERMITTED. MAXIMUM 0.100 PROTRUSION SHOWN.
- ALL CONTACTS/ SOLDER BALLS ARE NOT SHOWN TO MINIMIZE FILE SIZE.

PART NUMBER	DESCRIPTION
109072-0001	SCKT, 432G40 15.0-0.50 (EUTECTIC SOLDER BALL)
109072-0002	SCKT, 432G40 15.0-0.50 (SAC305 SOLDER BALL)
109072-0003	SCKT, 432G40 15.0-0.50 (WITHOUT SOLDER BALL)
103864-0005	PRESS DEVICE INSERT, 15 X 15 (SOLD SEPARATELY)
104553-0435	STENCIL, FLEX, 432G40 15.0-0.50 (SOLD SEPARATELY)
105900-0004	EXTRACTION TOOL, 4 X 53 (SOLD SEPARATELY)
108639-0005	ALIGNMENT, FRAME, G40 15.0 X 15.0 (SOLD SEPARATELY)


<p><b>HSIO technologies</b> PROPRIETARY AND CONFIDENTIAL</p> <p>THE INFORMATION CONTAINED IN THIS DRAWING IS THE SOLE PROPERTY OF HSI0 TECHNOLOGIES, LLC. ANY REPRODUCTION IN PART OR AS A WHOLE WITHOUT THE WRITTEN PERMISSION OF HSI0 TECHNOLOGIES, LLC IS PROHIBITED.</p>	UNLESS OTHERWISE SPECIFIED:	NAME	DATE	<b>HSI0 TECHNOLOGIES, LLC.</b> 13400 68th AVENUE NORTH MAPLE GROVE, MINNESOTA 55311 763-447-6260	
	DIMENSIONS ARE IN MILLIMETERS TOLERANCES: ANGULAR: ± 1° X.X ±0.25 X.XX ±0.10 X.XXX ±0.050	DRAWN	PAR		06/02/16
	INTERPRET GEOMETRIC TOLERANCING PER:	CHECKED	NSJ	06/02/16	TITLE:
	MATERIAL FINISH	SEE BOM		LEGEND:	SCKT, 432G40 15.0-0.50
DO NOT SCALE DRAWING			△ NOTE CALLOUT	DWG. NO.	
			⬡ REVISION CHANGE	109072-XXXX	
			○ ITEM NUMBER	REV	
				A	
				SCALE: 5:1	
				SIZE: C	
				SHEET 1 OF 2	

SOCKET FOR DEVICES THAT ARE WITHIN THESE SPECIFICATIONS					
Lead Count	<b>N</b>	432	Package Size	<b>D</b>	15.00
Columns	<b>ND</b>	24		<b>E</b>	15.00
Rows	<b>NE</b>	18	Ball Spacing	<b>D1</b>	13.000
Pitch	<b>e</b>	0.500		<b>E1</b>	12.000
Ball Size	<b>b</b>	0.30±0.05	Encapsulant/ Top Size	<b>D2</b>	N/A
Total Thickness	<b>A</b>	N/A		<b>E2</b>	N/A
Ball Height	<b>A1</b>	0.200 MIN	Pattern Style	IRREGULAR*	
Substrate Thickness	<b>A2</b>	N/A	Perimeter Rows	N/A	
Top Thickness	<b>A3</b>		Center Array	N/A	
Form Tolerances					
Edge	<b>aaa</b>	N/A	Bottom	<b>ddd</b>	N/A
Substrate	<b>bbb</b>	N/A	Position	<b>eee</b>	N/A
top	<b>ccc</b>	N/A	Position	<b>fff</b>	N/A

\*ALL DIMENSIONS ARE IN MILLIMETERS.



**Generic Representation with Full Grid Array**

 <b>PROPRIETARY AND CONFIDENTIAL</b> <small>THE INFORMATION CONTAINED IN THIS DRAWING IS THE SOLE PROPERTY OF HSIO TECHNOLOGIES, LLC. ANY REPRODUCTION IN PART OR AS A WHOLE WITHOUT THE WRITTEN PERMISSION OF HSIO TECHNOLOGIES, LLC IS PROHIBITED.</small>	UNLESS OTHERWISE SPECIFIED: DIMENSIONS ARE IN MILLIMETERS TOLERANCES: ANGULAR: ± 1° X.X ±0.25 X.XX ±0.10 X.XXX ±0.050	DRAWN PAR 06/02/16	NAME PAR 06/02/16	DATE 06/02/16	<b>HSIO TECHNOLOGIES, LLC.</b> <b>13400 68th AVENUE NORTH</b> <b>MAPLE GROVE, MINNESOTA 55311</b> <b>763-447-6260</b>	
	INTERPRET GEOMETRIC TOLERANCING PER:	CHECKED NSJ 06/02/16	LEGEND: △ NOTE CALLOUT ◻ REVISION CHANGE ○ ITEM NUMBER			TITLE: SCKT, 432G40 15.0-0.50
	MATERIAL SEE BOM	FINISH	DO NOT SCALE DRAWING		DWG. NO. <b>109072-XXXX</b>	REV <b>A</b>
					SCALE: 5:1	SIZE: C SHEET 2 OF 2