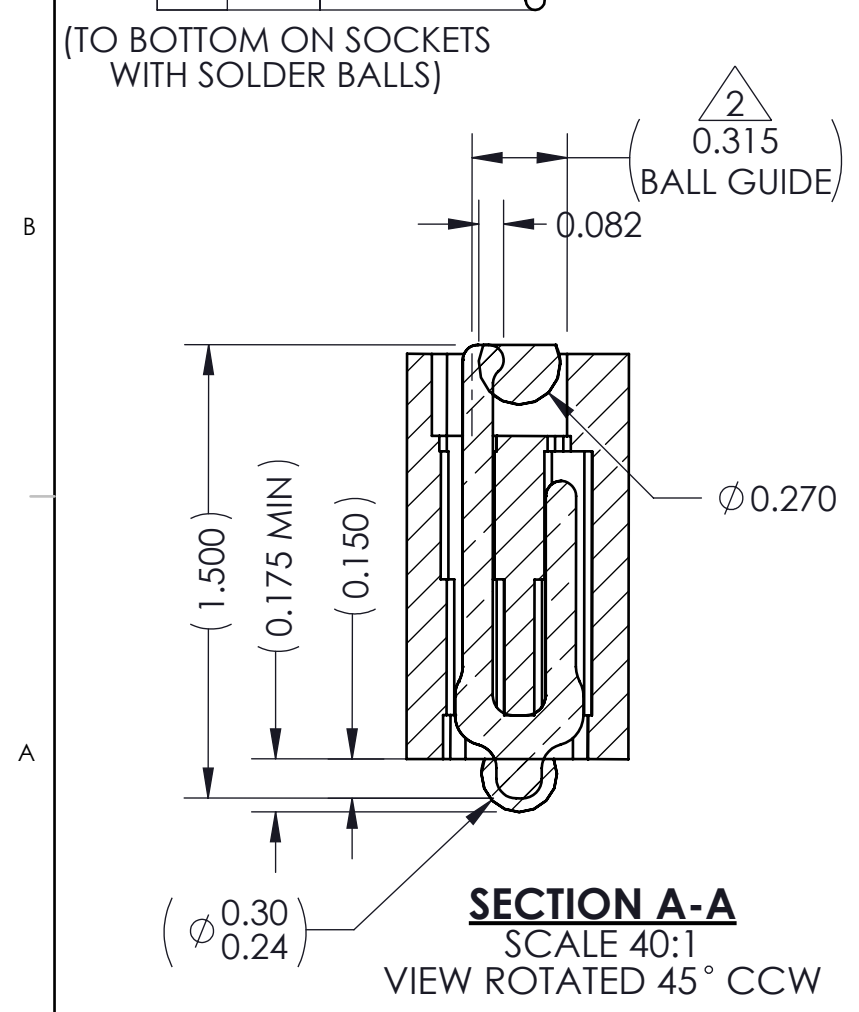
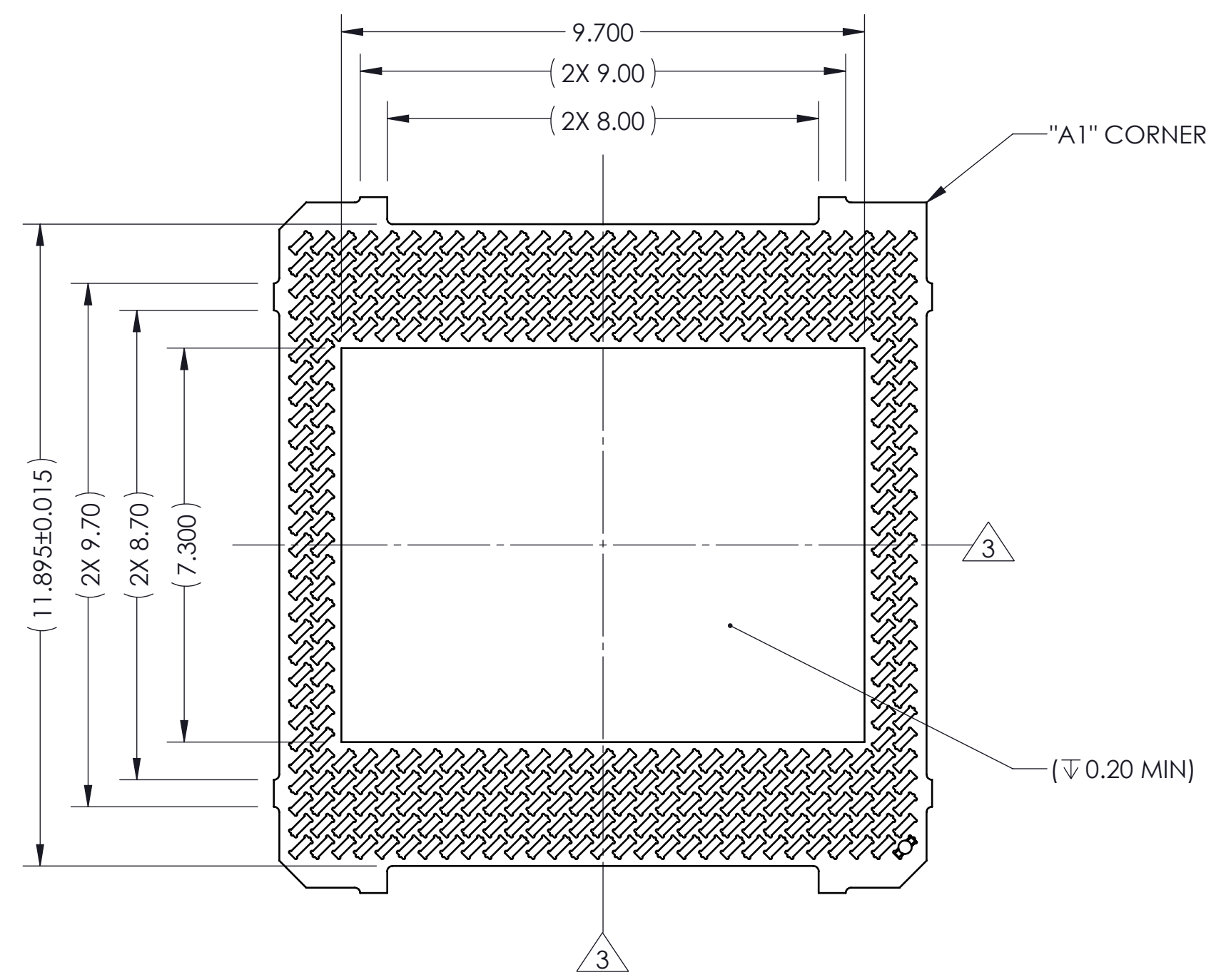
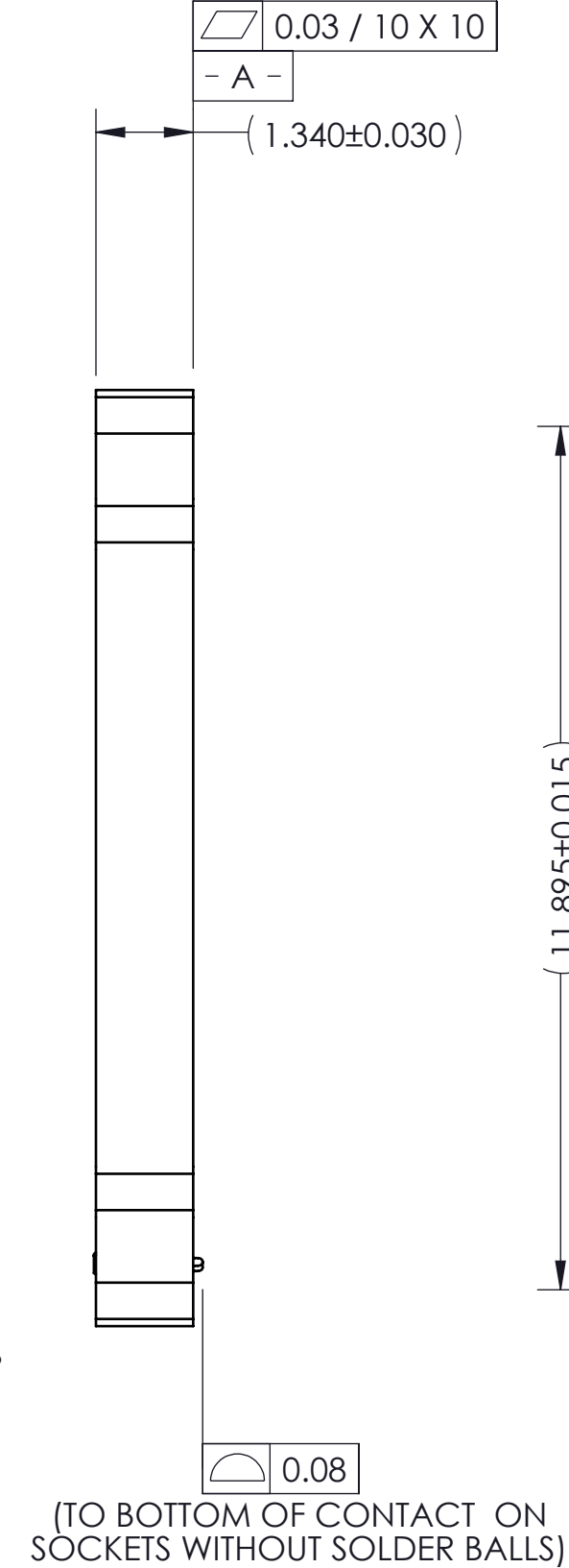
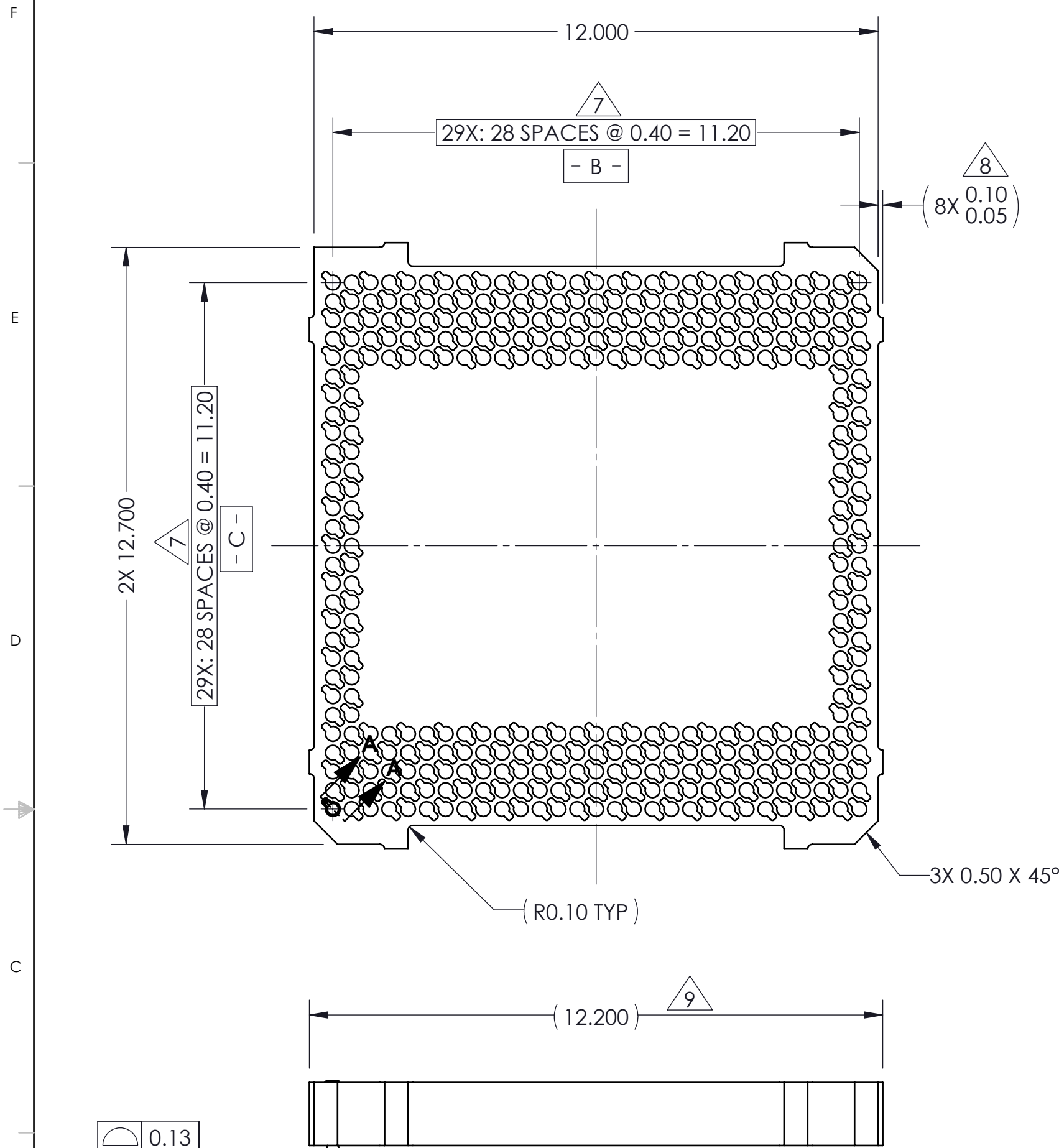


REV	ECO	BY	DESCRIPTION	APV	DATE
A	31805	RS	INITIAL DESIGN	NSJ	07/11/16



PART NUMBER	DESCRIPTION
109077-0001	SCKT, 366G40 12.0X12.7-0.40, P.O.P (EUTECTIC SOLDER BALL)
109077-0002	SCKT, 366G40 12.0X12.7-0.40, P.O.P (SAC305 SOLDER BALL)
109077-0003	SCKT, 366G40 12.0X12.7-0.40, P.O.P (WITHOUT SOLDER BALL)
103864-0002	PRESS DEVICE INSERT, 12.0 X 12.0 (SOLD SEPARATELY)
104553-0438	STENCIL, FLEX, 366G40 12.0X12.7-0.40 (SOLD SEPARATELY)
105900-0004	EXTRACTION TOOL, 4 X 53 (SOLD SEPARATELY)
108639-0079	ALIGNMENT, FRAME, GRY 12.0 X 12.7 (SOLD SEPARATELY)

- NOTES:
- UNLESS OTHERWISE NOTED, ALL FEATURES LOCATED  $\oplus 0.10$  A B C
  - DATUMS - B - AND - C - ARE DETERMINED BY  $\phi 0.315$  FEATURES ON CORNER SLOTS.
  - CENTER OF CONTACT PATTERN.
  - REFERENCE HSIO TECHNOLOGIES SPECIFICATION 700001-0001 FOR SOLDER ATTACHMENT.
  - REFERENCE HSIO TECHNOLOGIES SPECIFICATION 700001-0002 FOR APPLICATION NOTES.
  - DIMENSION LOCATES CENTER OF CONTACT/SLOT.
  - TOOLING MARKS PERMITTED. MAXIMUM 0.10 PROTRUSION SHOWN.
  - DIMENSION INCLUDES 0.10 PROTRUSION.
  - ALL CONTACTS/SOLDER BALLS ARE **NOT** SHOWN TO MINIMIZE FILE SIZE.

**HSIO** technologies  
PROPRIETARY AND CONFIDENTIAL

THE INFORMATION CONTAINED IN THIS DRAWING IS THE SOLE PROPERTY OF HSIO TECHNOLOGIES, LLC. ANY REPRODUCTION IN PART OR AS A WHOLE WITHOUT THE WRITTEN PERMISSION OF HSIO TECHNOLOGIES, LLC IS PROHIBITED.

UNLESS OTHERWISE SPECIFIED:  
DIMENSIONS ARE IN MILLIMETERS  
TOLERANCES:  
ANGULAR: ± 1°  
X.X ±0.25  
X.XX ±0.10  
X.XXX ±0.050

INTERPRET GEOMETRIC TOLERANCING PER:  
MATERIAL  
SEE PAGE 1  
FINISH

DO NOT SCALE DRAWING

DRAWN	RS	DATE	07/11/16
CHECKED	NSJ	DATE	07/11/16

LEGEND:  
 NOTE CALLOUT  
 REVISION CHANGE  
 ITEM NUMBER

**HSIO TECHNOLOGIES, LLC.**  
13400 68th AVENUE NORTH  
MAPLE GROVE, MINNESOTA 55311  
763-447-6260

TITLE:  
SCKT, 366G40  
12.0X12.7-0.40, P.O.P

DWG. NO.  
**109077-XXXX**

SCALE: 10:1 SIZE: C SHEET 1 OF 2

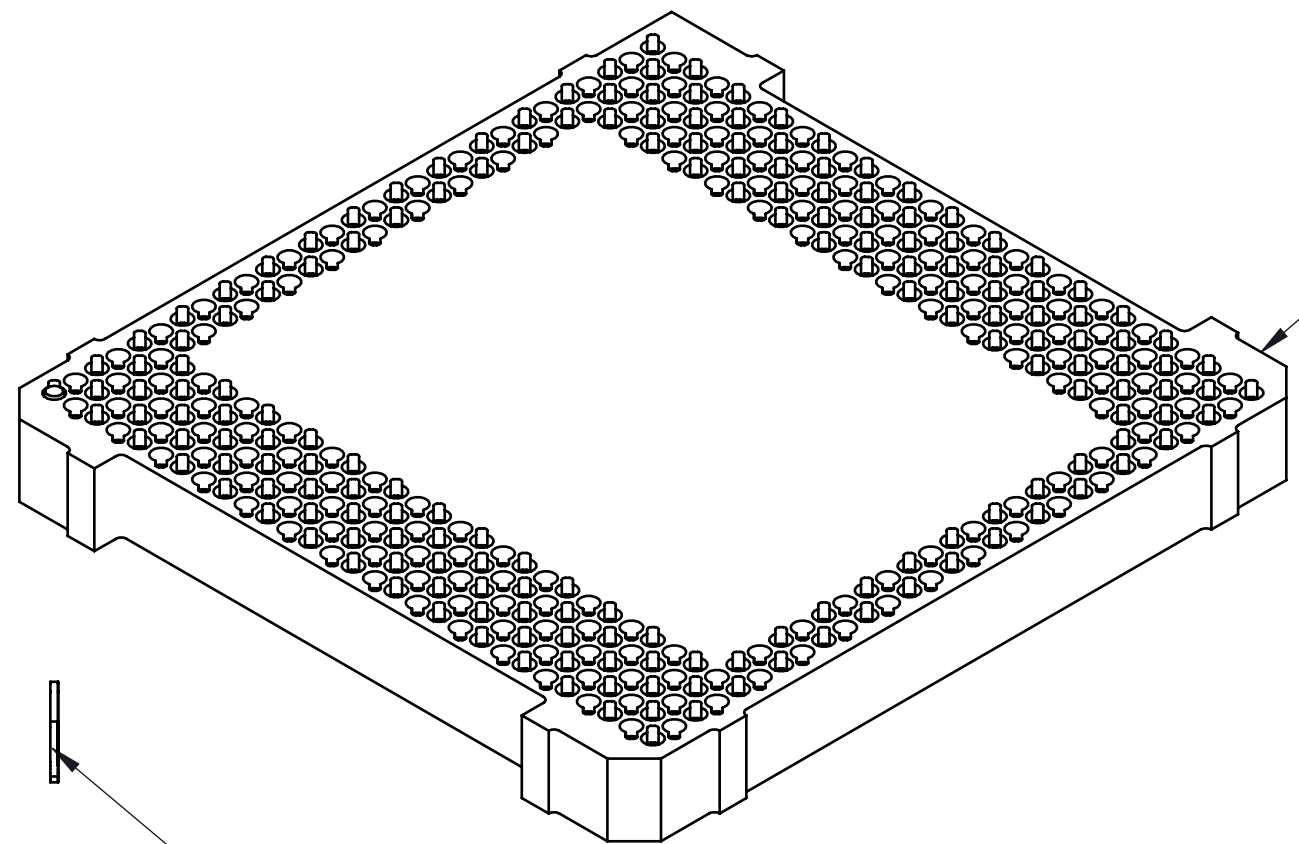
**SOCKET FOR DEVICES THAT ARE WITHIN THESE SPECIFICATIONS**

Ball Count	<b>N</b>	366	Package Size	<b>D</b>	12.00
Columns	<b>ND</b>	29		<b>E</b>	12.70
Rows	<b>NE</b>	29	Ball Spacing	<b>D1</b>	11.200
Pitch	<b>e</b>	0.400		<b>E1</b>	11.200
Ball Size	<b>b</b>	0.250±0.050	Encapsulant/ Top Size	<b>D2</b>	N/A
Total Thickness	<b>A</b>	N/A		<b>E2</b>	N/A
Ball Height	<b>A1</b>	0.175 MIN	Pattern Style	PERIMETER	
Substrate Thickness	<b>A2</b>	N/A	Perimeter Rows	N/A	
Top Thickness	<b>A3</b>		Center Array	N/A	

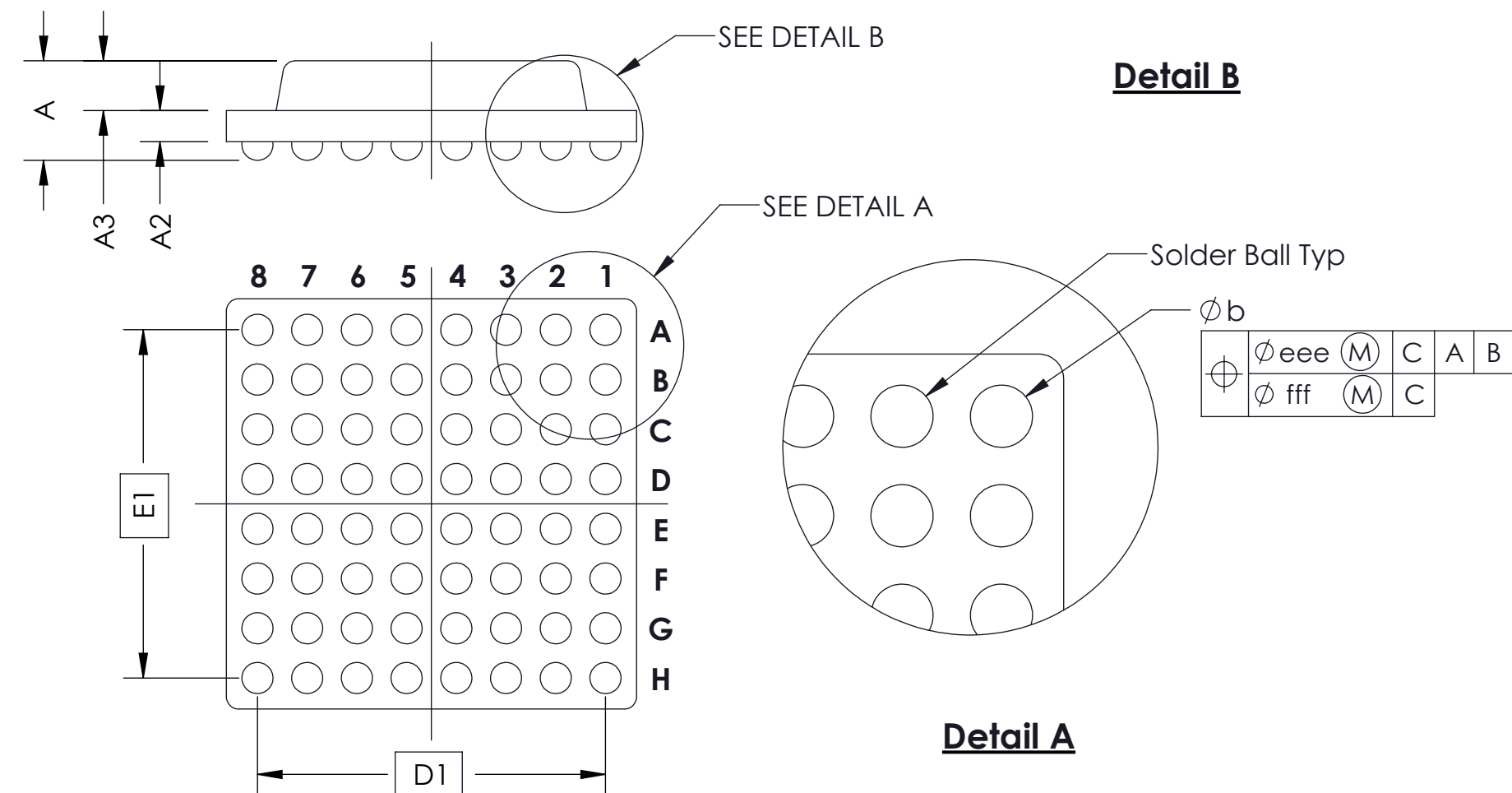
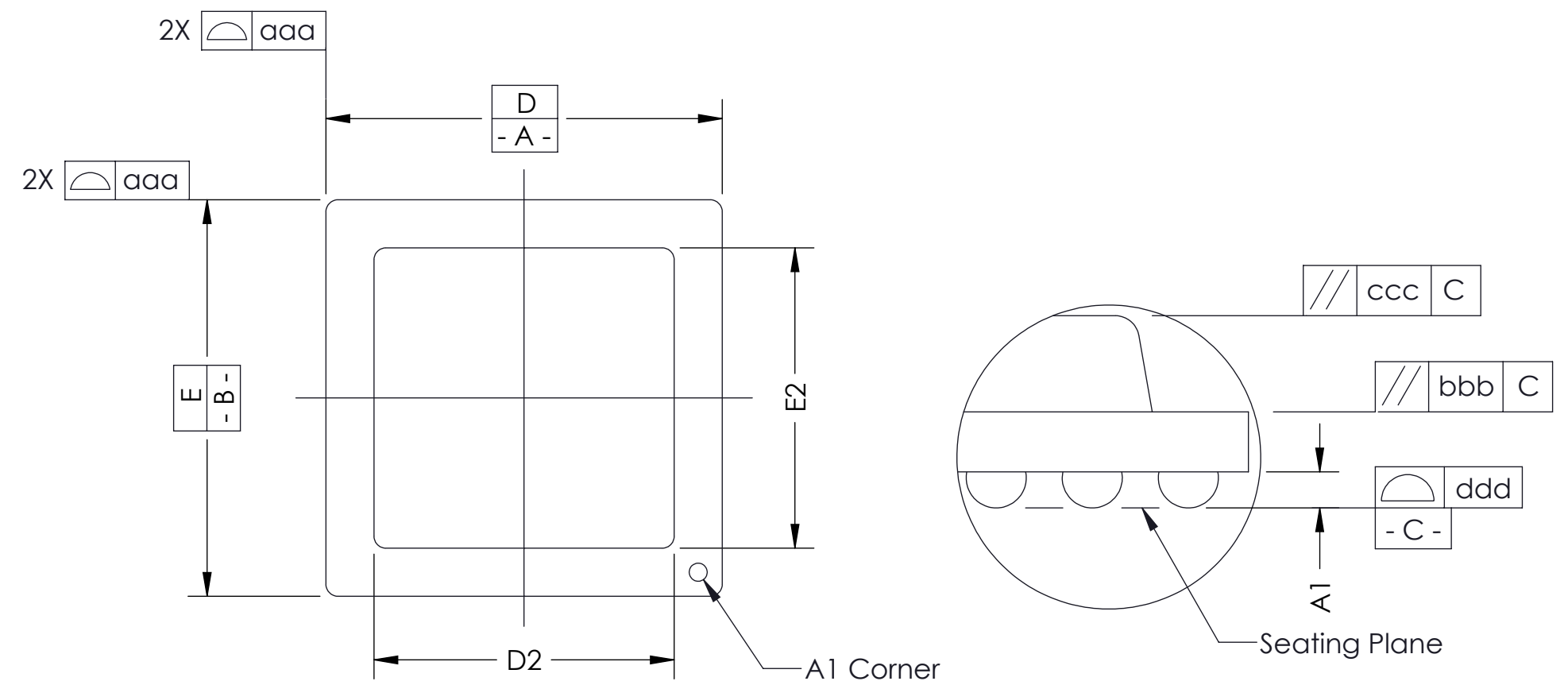
**Form Tolerances**

Edge	<b>aaa</b>	0.20	Bottom	<b>ddd</b>	0.15
Substrate	<b>bbb</b>	0.20	Position	<b>eee</b>	0.20
Top	<b>ccc</b>	0.20	Position	<b>fff</b>	0.10

\* ALL DIMENSIONS ARE IN MILLIMETERS.



**SCALE**  
10:1



**Generic Representation with Full Grid Array**

<p><b>HSIO technologies</b> PROPRIETARY AND CONFIDENTIAL</p> <p>THE INFORMATION CONTAINED IN THIS DRAWING IS THE SOLE PROPERTY OF HSIO TECHNOLOGIES, LLC. ANY REPRODUCTION IN PART OR AS A WHOLE WITHOUT THE WRITTEN PERMISSION OF HSIO TECHNOLOGIES, LLC IS PROHIBITED.</p>	UNLESS OTHERWISE SPECIFIED: DIMENSIONS ARE IN MILLIMETERS TOLERANCES: ANGULAR: ± 1° X.X ±0.25 X.XX ±0.10 X.XXX ±0.050	DRAWN RS 07/11/16	NAME RS	DATE 07/11/16	<p><b>HSIO TECHNOLOGIES, LLC.</b> 13400 68th AVENUE NORTH MAPLE GROVE, MINNESOTA 55311 763-447-6260</p>	
	INTERPRET GEOMETRIC TOLERANCING PER:	CHECKED NSJ 07/11/16	NAME NSJ	DATE 07/11/16		TITLE: SCKT, 366G40 12.0X12.7-0.40, P.O.P
	MATERIAL SEE PAGE 1	LEGEND: △ NOTE CALLOUT □ REVISION CHANGE ○ ITEM NUMBER	DO NOT SCALE DRAWING		DWG. NO. <b>109077-XXXX</b>	REV <b>A</b>
	FINISH				SCALE: 8:1	SIZE: C