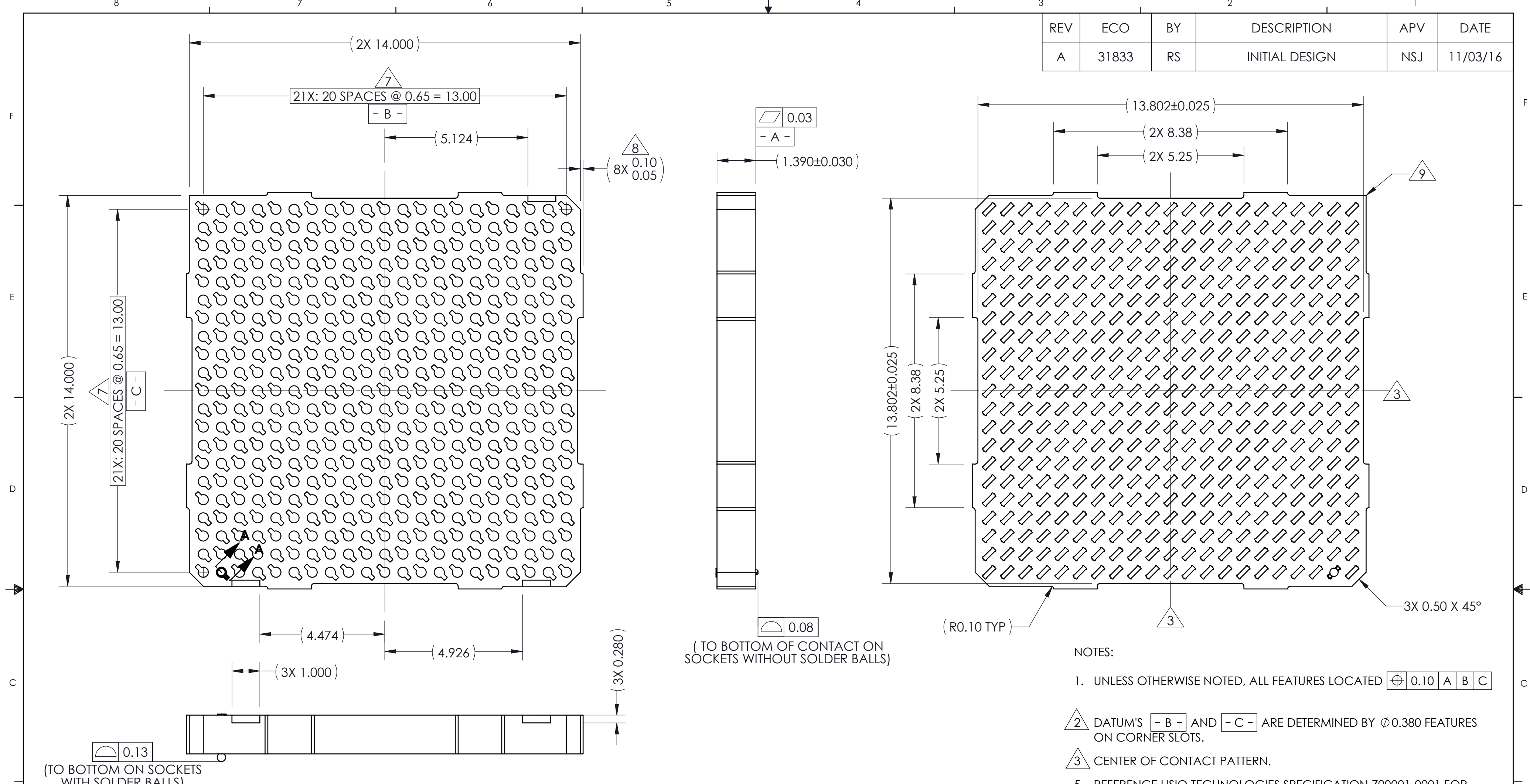
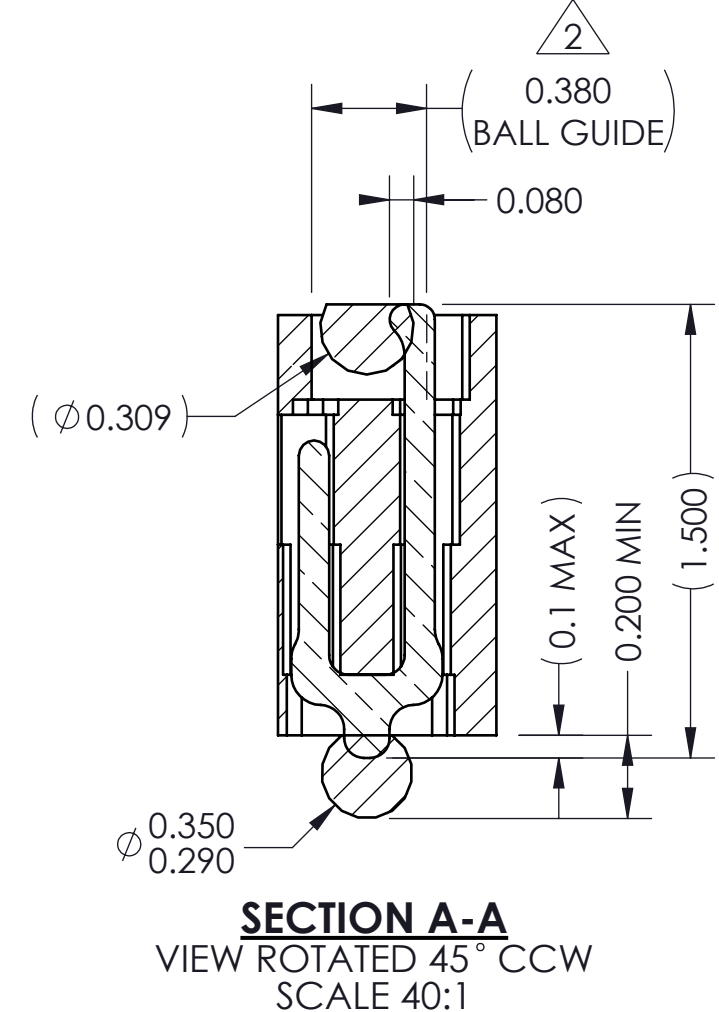


REV	ECO	BY	DESCRIPTION	APV	DATE
A	31833	RS	INITIAL DESIGN	NSJ	11/03/16



- NOTES:
- UNLESS OTHERWISE NOTED, ALL FEATURES LOCATED $\oplus 0.10$ A B C
 - DATUM'S - B - AND - C - ARE DETERMINED BY $\phi 0.380$ FEATURES ON CORNER SLOTS.
 - CENTER OF CONTACT PATTERN.
 - REFERENCE HSIO TECHNOLOGIES SPECIFICATION 700001-0001 FOR SOLDER ATTACHMENT.
 - REFERENCE HSIO TECHNOLOGIES SPECIFICATION 700001-0002 FOR APPLICATION NOTES.
 - DIMENSION LOCATES CENTER OF CONTACT/SLOT.
 - TOOLING MARKS PERMITTED. MAXIMUM 0.10 PROTRUSION SHOWN.
 - PIN "A1" INDICATOR.

PART NUMBER	DESCRIPTION
109086-0001	SCKT, 441G40 14.0-0.65 (EUTECTIC SOLDER BALL)
109086-0002	SCKT, 441G40 14.0-0.65 (SAC305 SOLDER BALL)
109086-0003	SCKT, 441G40 14.0-0.65 (WITHOUT SOLDER BALL)
103864-0004	PRESS DEVICE INSERT, 14.0 X 14.0 (SOLD SEPARATELY)
104553-0446	STENCIL, FLEX, 441G40 14.0-0.65 (SOLD SEPARATELY)
108639-0002	ALIGNMENT FRAME, GRY 14.0 X 14.0 (SOLD SEPARATELY)
105900-0004	EXTRACTION TOOL, 4 X 53 (SOLD SEPARATELY)



HSIO technologies
PROPRIETARY AND CONFIDENTIAL

THE INFORMATION CONTAINED IN THIS DRAWING IS THE SOLE PROPERTY OF HSIO TECHNOLOGIES, LLC. ANY REPRODUCTION IN PART OR AS A WHOLE WITHOUT THE WRITTEN PERMISSION OF HSIO TECHNOLOGIES, LLC IS PROHIBITED.

UNLESS OTHERWISE SPECIFIED:
DIMENSIONS ARE IN MILLIMETERS
TOLERANCES:
ANGULAR: $\pm 1^\circ$
X.X ± 0.25
X.XX ± 0.10
X.XXX ± 0.050

INTERPRET GEOMETRIC TOLERANCING PER:
MATERIAL: SEE BOM
FINISH:

DO NOT SCALE DRAWING

DRAWN	RS	11/03/16
CHECKED	NSJ	11/03/16

LEGEND:
 \triangle NOTE CALLOUT
 \square REVISION CHANGE
 \circ ITEM NUMBER

HSIO TECHNOLOGIES, LLC.
13400 68th AVENUE NORTH
MAPLE GROVE, MINNESOTA 55311
763-447-6260

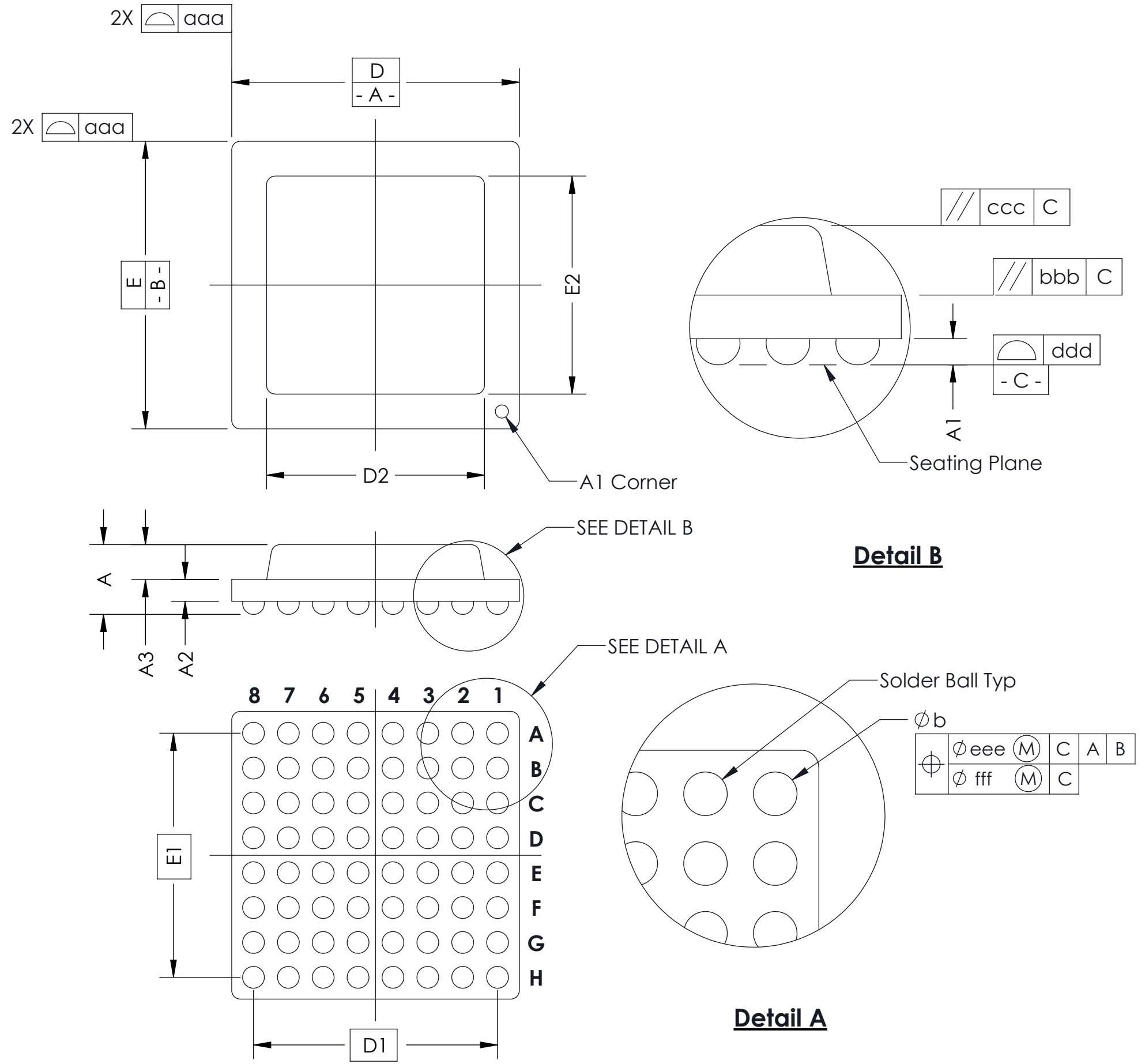
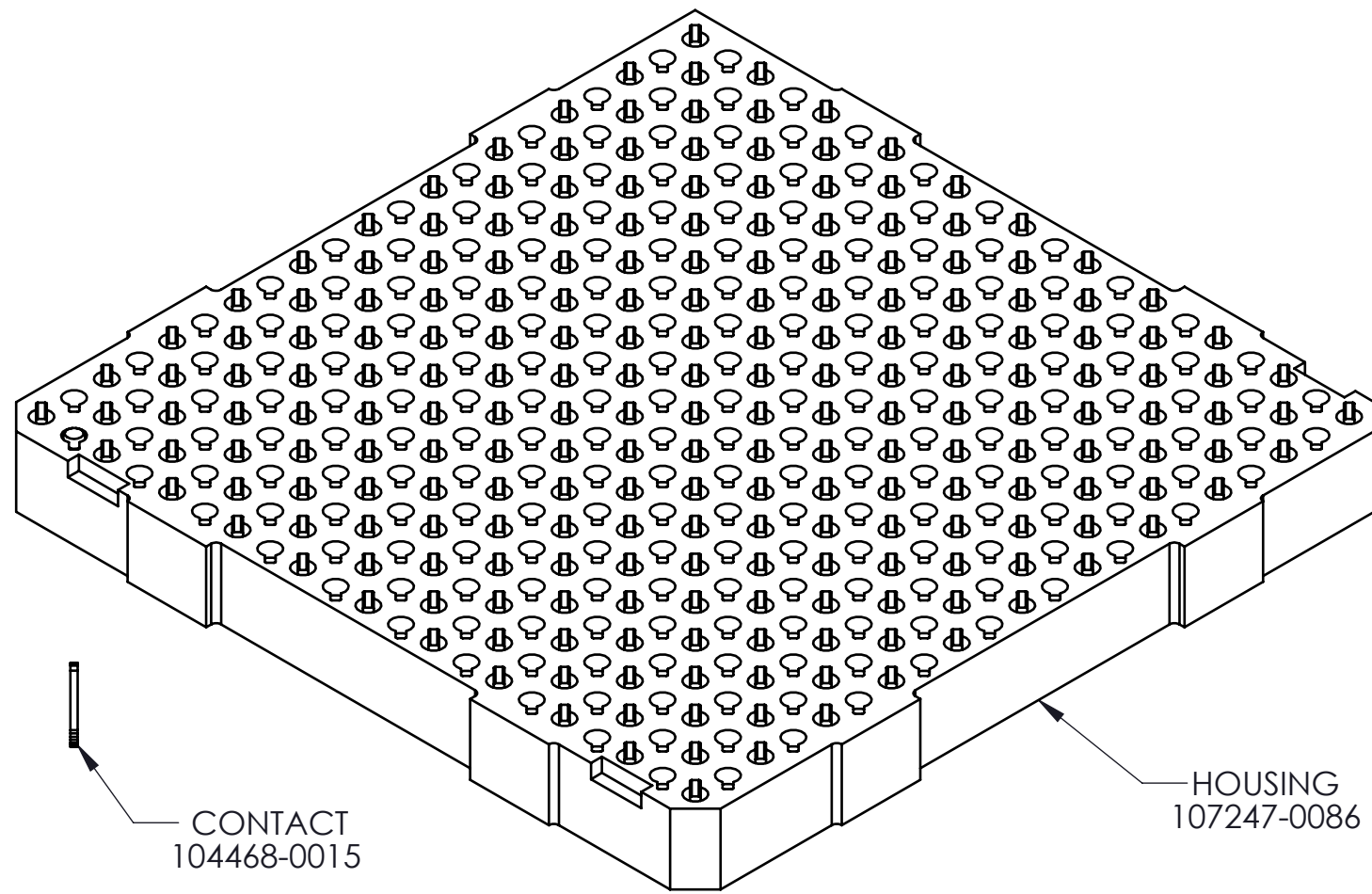
TITLE:
SCKT, 441G40 14.0-0.65

DWG. NO. **109086-XXXX** REV **A**

SCALE: 10:1 SIZE: C SHEET 1 OF 2

SOCKET FOR DEVICES THAT ARE WITHIN THESE SPECIFICATIONS					
Lead Count	N	441	Package Size	D	14.00
Columns	ND	21		E	14.00
Rows	NE	21	Ball Spacing	D1	13.000
Pitch	e	0.65		E1	13.000
Ball Size	b	0.30-0.37	Encapsulant/ Top Size	D2	N/A
Total Thickness	A	N/A		E2	N/A
Ball Height	A1	0.200 MIN	Pattern Style	FULL	
Substrate Thickness	A2	N/A	Perimeter Rows	N/A	
Top Thickness	A3		Center Array	N/A	
Form Tolerances					
Edge	aaa	N/A	Bottom	ddd	N/A
Substrate	bbb	N/A	Position	eee	N/A
top	ccc	N/A	Position	fff	N/A

ALL DIMENSIONS IN MILLIMETERS.



Generic Representation with Full Grid Array

<p>HSIO technologies PROPRIETARY AND CONFIDENTIAL</p> <p>THE INFORMATION CONTAINED IN THIS DRAWING IS THE SOLE PROPERTY OF HSIO TECHNOLOGIES, LLC. ANY REPRODUCTION IN PART OR AS A WHOLE WITHOUT THE WRITTEN PERMISSION OF HSIO TECHNOLOGIES, LLC IS PROHIBITED.</p>	UNLESS OTHERWISE SPECIFIED:	NAME	DATE	HSIO TECHNOLOGIES, LLC. 13400 68th AVENUE NORTH MAPLE GROVE, MINNESOTA 55311 763-447-6260	
	DIMENSIONS ARE IN MILLIMETERS	DRAWN	RS		11/03/16
	TOLERANCES:	CHECKED	NSJ	11/03/16	TITLE: SCKT, 441G40 14.0-0.65
	ANGULAR: $\pm 1^\circ$	LEGEND:			
X.X ± 0.25	INTERPRET GEOMETRIC TOLERANCING PER:	\triangle	NOTE CALLOUT	DWG. NO. 109086-XXXX	
X.XX ± 0.10	MATERIAL	\square	REVISION CHANGE		REV A
X.XXX ± 0.050	FINISH	\circ	ITEM NUMBER	SCALE: 10:1	
DO NOT SCALE DRAWING	SEE BOM			SIZE: C	
				SHEET 2 OF 2	