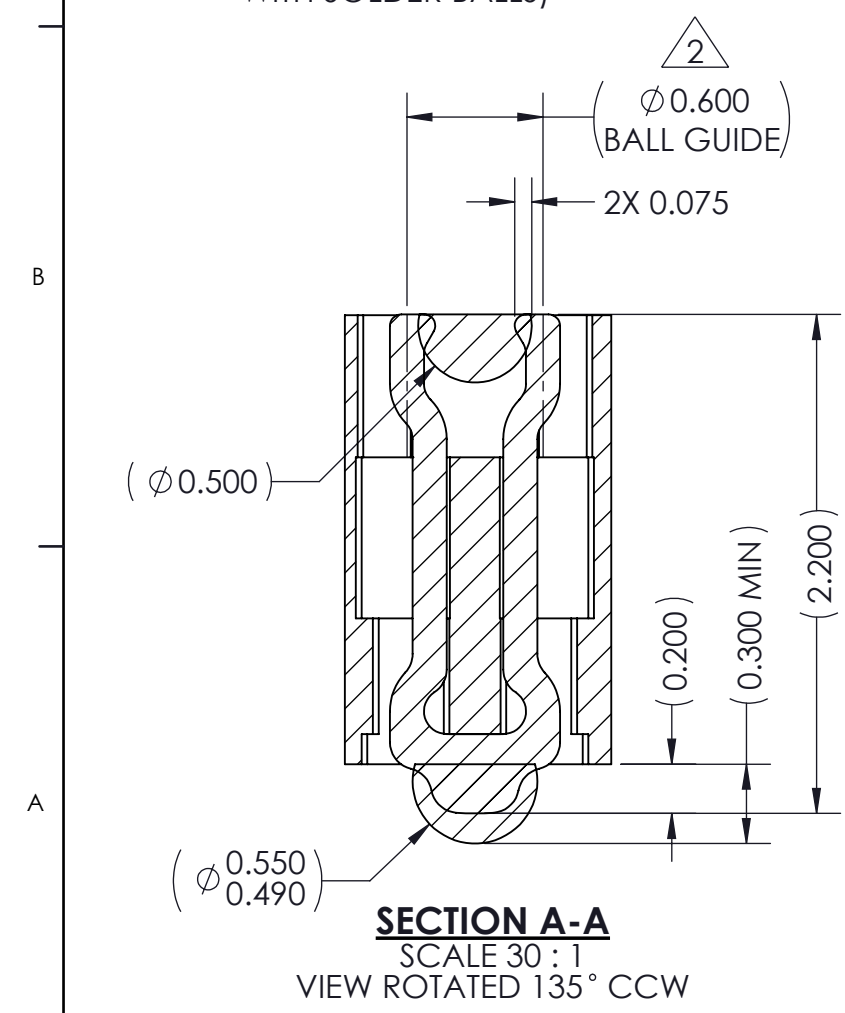
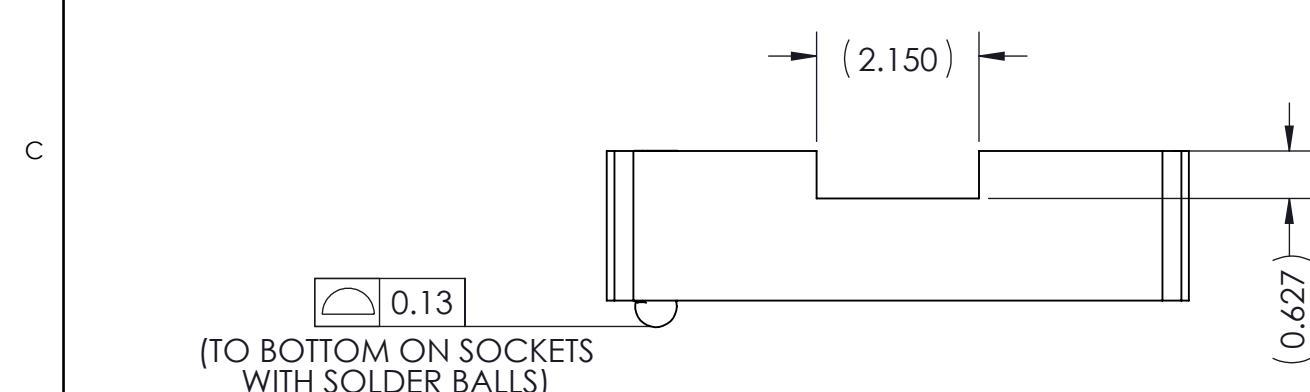
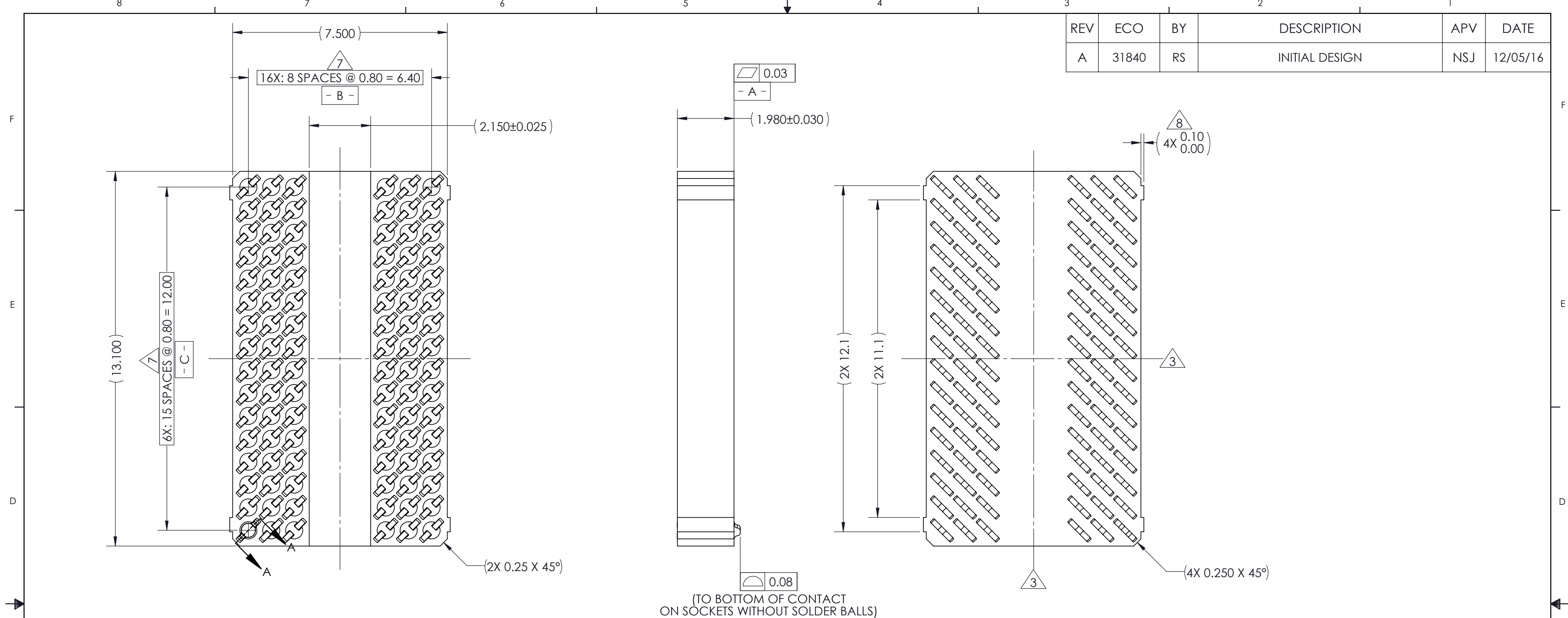


REV	ECO	BY	DESCRIPTION	APV	DATE
A	31840	RS	INITIAL DESIGN	NSJ	12/05/16



NOTES:

- UNLESS OTHERWISE NOTED, ALL FEATURES LOCATED  $\oplus 0.10$  A B C
- DATUM'S - B - AND - C - ARE DETERMINED BY  $\phi 0.600$  FEATURES ON CORNER SLOTS.
- CENTER OF CONTACT PATTERN.
- REFERENCE HSIO TECHNOLOGIES SPECIFICATION 70001-0001 FOR SOLDER ATTACHMENT.
- REFERENCE HSIO TECHNOLOGIES SPECIFICATION 70001-0002 FOR APPLICATION NOTES.
- DIMENSION LOCATES CENTER OF CONTACT/SLOT.
- TOOLING MARKS PERMITTED. MAXIMUM 0.10 PROTRUSION SHOWN.
- NOT ALL SOLDER BALLS SHOWN TO MINIMIZE FILE SIZE.

PART NUMBER	DESCRIPTION
111017-0001	SCKT, 96GRY 7.5X13.1-0.80 (EUTECTIC SOLDER BALL)
111017-0002	SCKT, 96GRY 7.5X13.1-0.80 (SAC305 SOLDER BALL)
111017-0003	SCKT, 96GRY 7.5X13.1-0.80 (WITHOUT SOLDER BALL)
103864-0060	PRESS DEVICE INSERT, 7.5 X 13.1 (SOLD SEPARATELY)
104553-0449	STENCIL, FLEX, 96GRY 7.5X13.1-0.80 (SOLD SEPARATELY)
105900-0004	EXTRACTION TOOL, 4 X 53 (SOLD SEPARATELY)

<p><b>HSIO technologies</b> PROPRIETARY AND CONFIDENTIAL</p> <p>THE INFORMATION CONTAINED IN THIS DRAWING IS THE SOLE PROPERTY OF HSIO TECHNOLOGIES, LLC. ANY REPRODUCTION IN PART OR AS A WHOLE WITHOUT THE WRITTEN PERMISSION OF HSIO TECHNOLOGIES, LLC IS PROHIBITED.</p>	UNLESS OTHERWISE SPECIFIED:	NAME	DATE	<b>HSIO TECHNOLOGIES, LLC.</b> 13400 68th AVENUE NORTH MAPLE GROVE, MINNESOTA 55311 763-447-6260	
	DIMENSIONS ARE IN MILLIMETERS	DRAWN	RS		12/05/16
	TOLERANCES: ANGULAR: $\pm 1^\circ$ X.X $\pm 0.25$ X.XX $\pm 0.10$ X.XXX $\pm 0.050$	CHECKED	NSJ	12/05/16	TITLE:
	INTERPRET GEOMETRIC TOLERANCING PER:	LEGEND:		SCKT, 96GRY 7.5X13.1-0.80	
MATERIAL	SEE B.O.M	$\triangle$ NOTE CALLOUT			
FINISH		$\square$ REVISION CHANGE			
DO NOT SCALE DRAWING		$\circ$ ITEM NUMBER	DWG. NO.	REV	
			111017-XXXX	A	
			SCALE: 10:1	SIZE: C	SHEET 1 OF 2

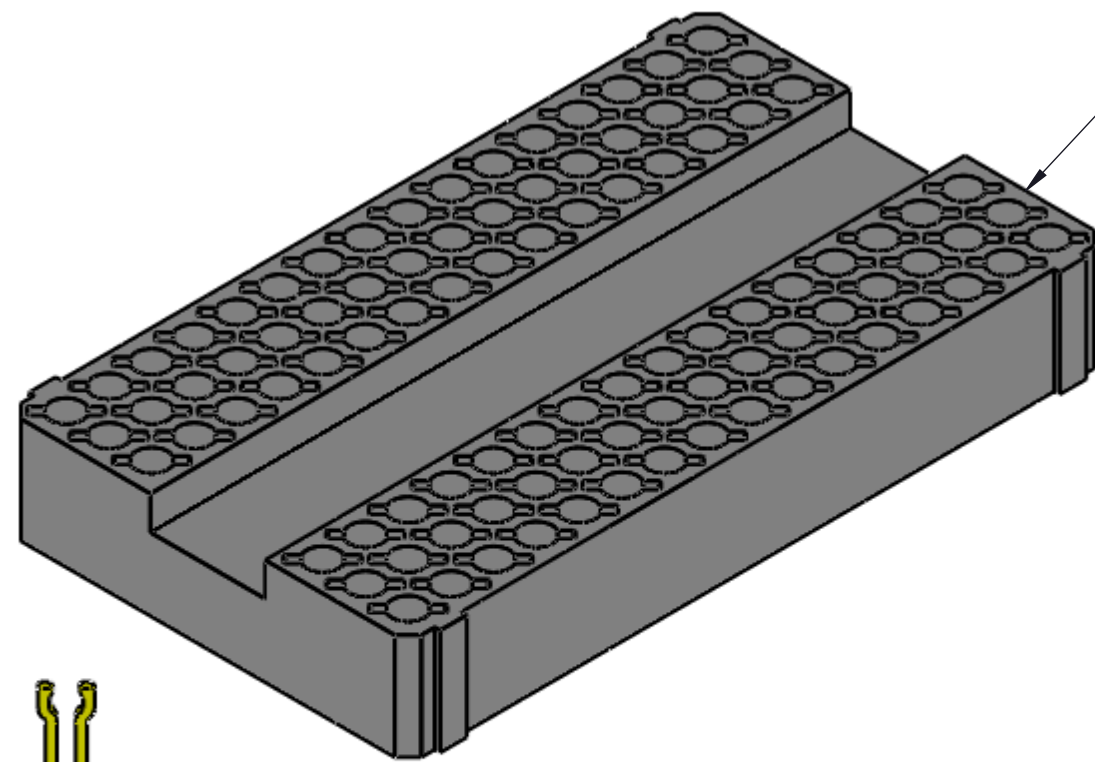
**SOCKET FOR DEVICES THAT ARE WITHIN THESE SPECIFICATIONS**

Lead Count	<b>N</b>	96	Package Size	<b>D</b>	7.50
Columns	<b>ND</b>	9		<b>E</b>	13.10
Rows	<b>NE</b>	16	Ball Spacing	<b>D1</b>	6.400
Pitch	<b>e</b>	0.800		<b>E1</b>	12.000
Ball Size	<b>b</b>	0.50±0.05	Encapsulant/ Top Size	<b>D2</b>	N/A
Total Thickness	<b>A</b>	N/A		<b>E2</b>	N/A
Ball Height	<b>A1</b>	0.30 MIN	Pattern Style	IRREGULAR	
Substrate Thickness	<b>A2</b>	N/A	Perimeter Rows	N/A	
Top Thickness	<b>A3</b>		Center Array	N/A	

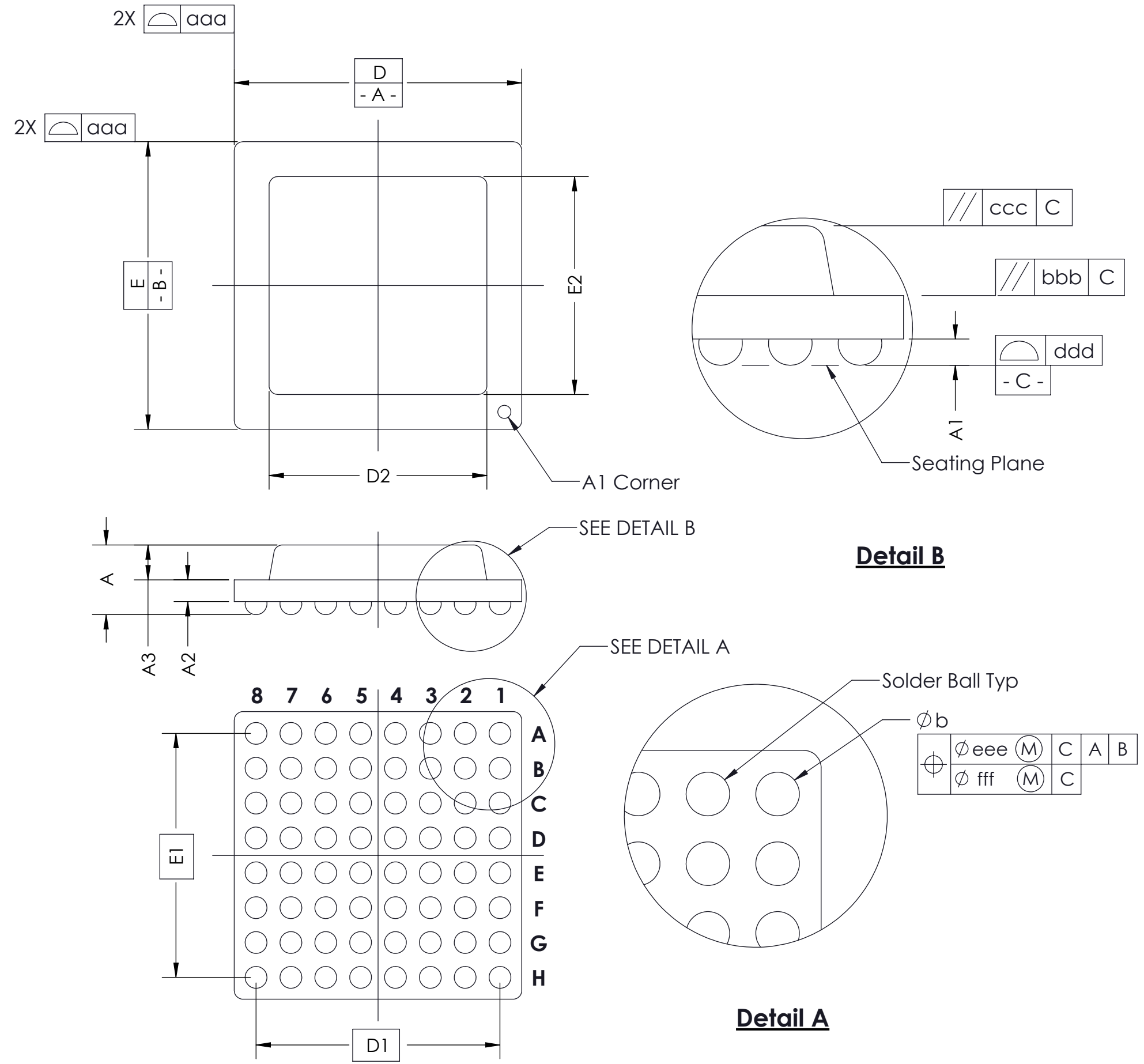
**Form Tolerances**

Edge	<b>aaa</b>	N/A	Bottom	<b>ddd</b>	N/A
Substrate	<b>bbb</b>	N/A	Position	<b>eee</b>	N/A
Top	<b>ccc</b>	N/A	Position	<b>fff</b>	N/A

\* ALL DIMENSIONS ARE IN MILLIMETERS.



HOUSING  
106660-0042



**Generic Representation with Full Grid Array**

<p><b>HSIO technologies</b> PROPRIETARY AND CONFIDENTIAL</p> <p>THE INFORMATION CONTAINED IN THIS DRAWING IS THE SOLE PROPERTY OF HSIO TECHNOLOGIES, LLC. ANY REPRODUCTION IN PART OR AS A WHOLE WITHOUT THE WRITTEN PERMISSION OF HSIO TECHNOLOGIES, LLC IS PROHIBITED.</p>	UNLESS OTHERWISE SPECIFIED:	NAME	DATE	<b>HSIO TECHNOLOGIES, LLC.</b> 13400 68th AVENUE NORTH MAPLE GROVE, MINNESOTA 55311 763-447-6260	
	DIMENSIONS ARE IN MILLIMETERS	DRAWN	RS		12/05/16
	TOLERANCES:	CHECKED	NSJ	12/05/16	TITLE: SCKT, 96GRY 7.5X13.1-0.80
	ANGULAR: ± 1° X.X ±0.25 X.XX ±0.10 X.XXX ±0.050	LEGEND:			
INTERPRET GEOMETRIC TOLERANCING PER:	△ NOTE CALLOUT			DWG. NO.	REV
MATERIAL	◇ REVISION CHANGE			111017-XXXX	A
FINISH	○ ITEM NUMBER			SCALE: 10:1	SIZE: C
DO NOT SCALE DRAWING				SHEET 2 OF 2	