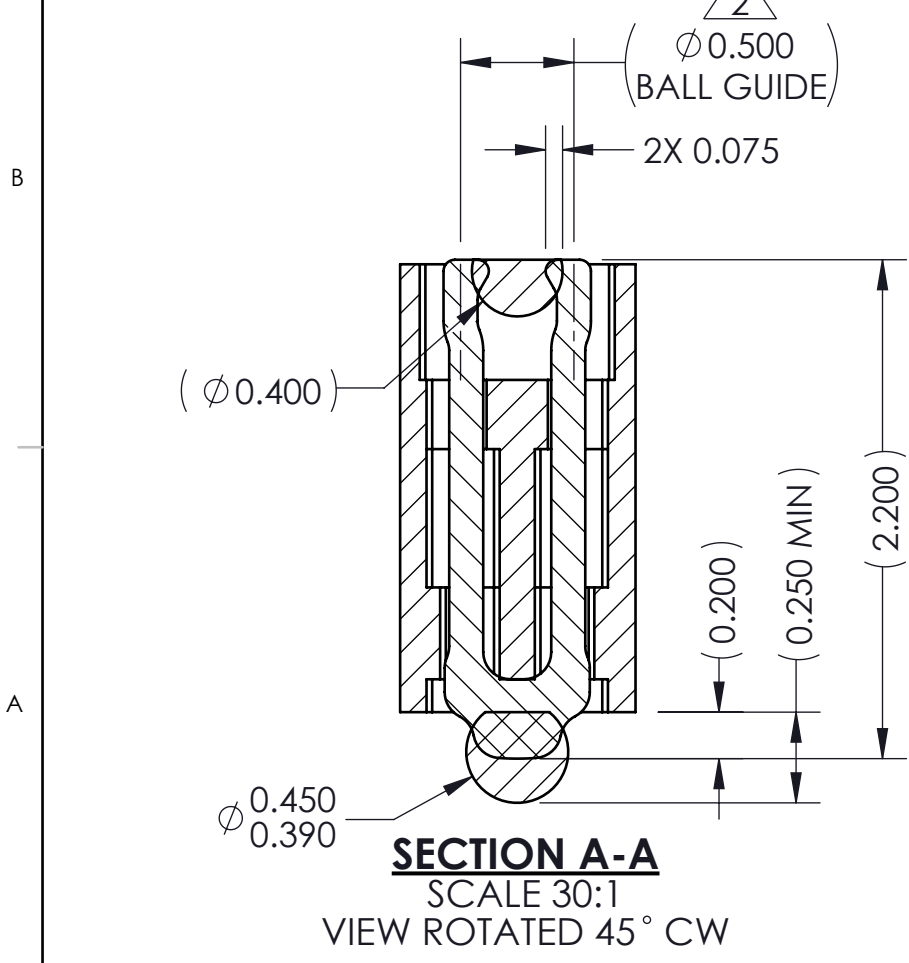
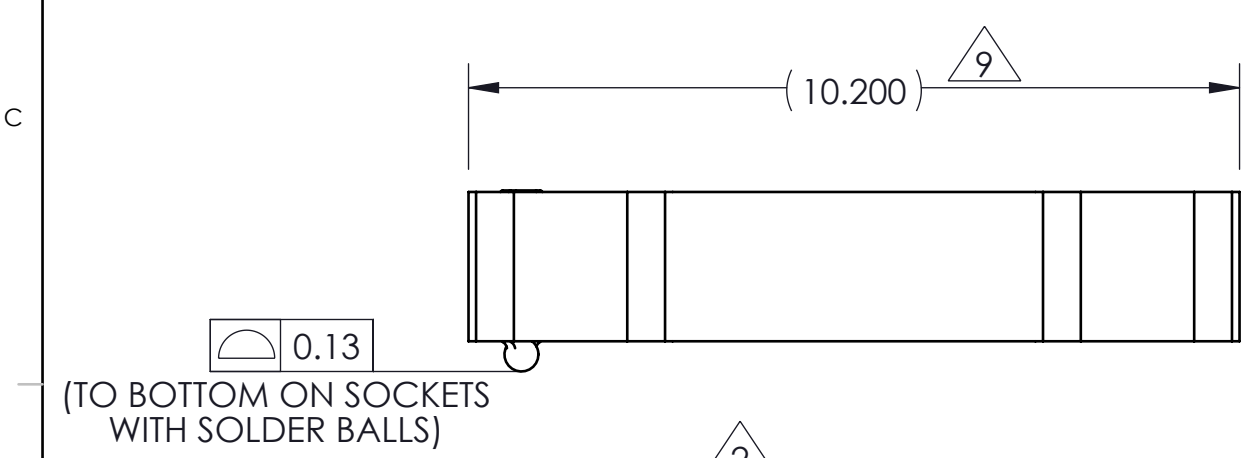
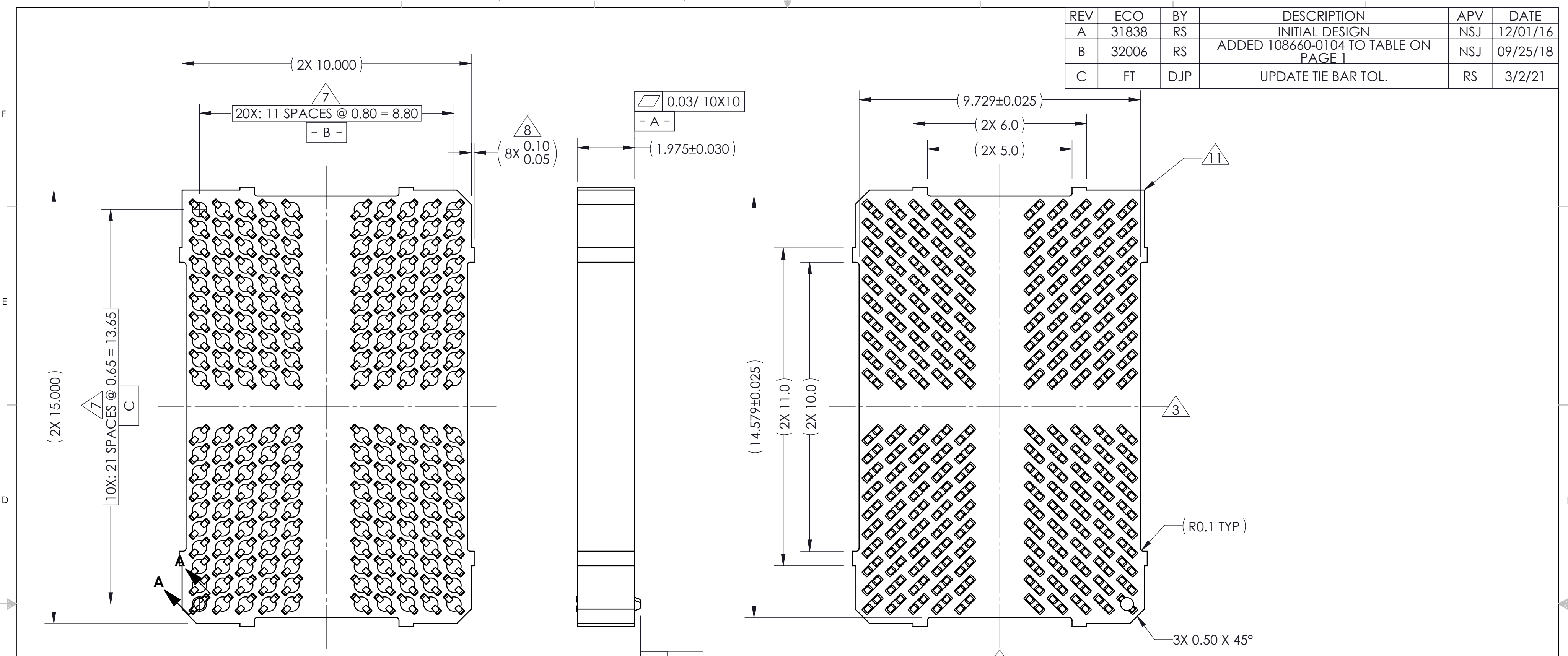


| REV | ECO | BY | DESCRIPTION | APV | DATE |
|-----|-------|-----|--------------------------------------|-----|----------|
| A | 31838 | RS | INITIAL DESIGN | NSJ | 12/01/16 |
| B | 32006 | RS | ADDED 108660-0104 TO TABLE ON PAGE 1 | NSJ | 09/25/18 |
| C | FT | DJP | UPDATE TIE BAR TOL. | RS | 3/2/21 |



(TO BOTTOM OF CONTACT ON SOCKETS WITHOUT SOLDER BALLS)

NOTES:

- UNLESS OTHERWISE NOTED, ALL FEATURES LOCATED $\oplus 0.10$ A B C
- DATUM'S - B - AND - C - ARE DETERMINED BY $\phi 0.500$ FEATURES ON CORNER SLOTS.
- CENTER OF CONTACT/SOLDER BALL PATTERN.
- REFERENCE IRONWOOD ELECTRONICS, INC. SPECIFICATION 700001-0001 FOR SOLDER ATTACHMENT.
- REFERENCE IRONWOOD ELECTRONICS, INC. SPECIFICATION 700001-0002 FOR APPLICATION NOTES.
- DIMENSION LOCATES CENTER OF CONTACT/SLOT.
- TOOLING MARKS PERMITTED. MAXIMUM 0.10 PROTRUSION SHOWN.
- DIMENSION INCLUDES 0.10 PROTRUSION.
- ALL CONTACTS/SOLDER BALLS ARE NOT SHOWN TO MINIMIZE FILE SIZE.
- "A1" CORNER.

| PART NUMBER | DESCRIPTION |
|-------------|---|
| 111020-0001 | SCKT, 200GRY 10X15-0.80X0.65 (EUTECTIC SOLDER BALL) |
| 111020-0002 | SCKT, 200GRY 10X15-0.80X0.65 (SAC305 SOLDER BALL) |
| 111020-0003 | SCKT, 200GRY 10X15-0.80X0.65 (WITHOUT SOLDER BALL) |
| 103864-0059 | PRESS DEVICE INSERT, 10.0 X 15.0 (SOLD SEPARATELY) |
| 104553-0380 | STENCIL, FLEX, 200GRY 10X15-0.80X0.65 (SOLD SEPARATELY) |
| 105900-0004 | EXTRACTION TOOL, 4 X 53 (SOLD SEPARATELY) |
| 108639-0089 | ALIGNMENT FRAME, GRY 10.0 X 14.5 (SOLD SEPARATELY) |
| 108639-0048 | ALIGNMENT FRAME, GRY 10.0 X 15.0 (SOLD SEPARATELY) |
| 108660-0104 | ALIGNMENT FRAME, 10X15-17.958X14.961 (SOLD SEPARATELY) |

PROPRIETARY AND CONFIDENTIAL
 THE INFORMATION CONTAINED IN THIS DRAWING IS THE SOLE PROPERTY OF IRONWOOD ELECTRONICS, INC. ANY REPRODUCTION IN PART OR AS A WHOLE WITHOUT THE WRITTEN PERMISSION OF IRONWOOD ELECTRONICS, INC IS PROHIBITED.

UNLESS OTHERWISE SPECIFIED:
 DIMENSIONS ARE IN MILLIMETERS
 TOLERANCES:
 ANGULAR: ± 1°
 X.X ± 0.25
 X.XX ± 0.10
 X.XXX ± 0.050

INTERPRET GEOMETRIC TOLERANCING PER:
 MATERIAL: SEE B.O.M
 FINISH

DO NOT SCALE DRAWING

| NAME | DATE |
|--------------|----------|
| DRAWN: RS | 12/01/16 |
| CHECKED: NSJ | 12/01/16 |

LEGEND:
 △ NOTE CALLOUT
 □ REVISION CHANGE
 ○ ITEM NUMBER

IRONWOOD ELECTRONICS, INC.
 1335 EAGANDALE COURT
 EAGAN, MINNESOTA 55121
 952-229-8200

TITLE:
 SCKT, 200GRY 10X15-0.80X0.65

DWG. NO. 111020-XXXX REV C

SCALE: 10:1 SIZE: C SHEET 1 OF 2

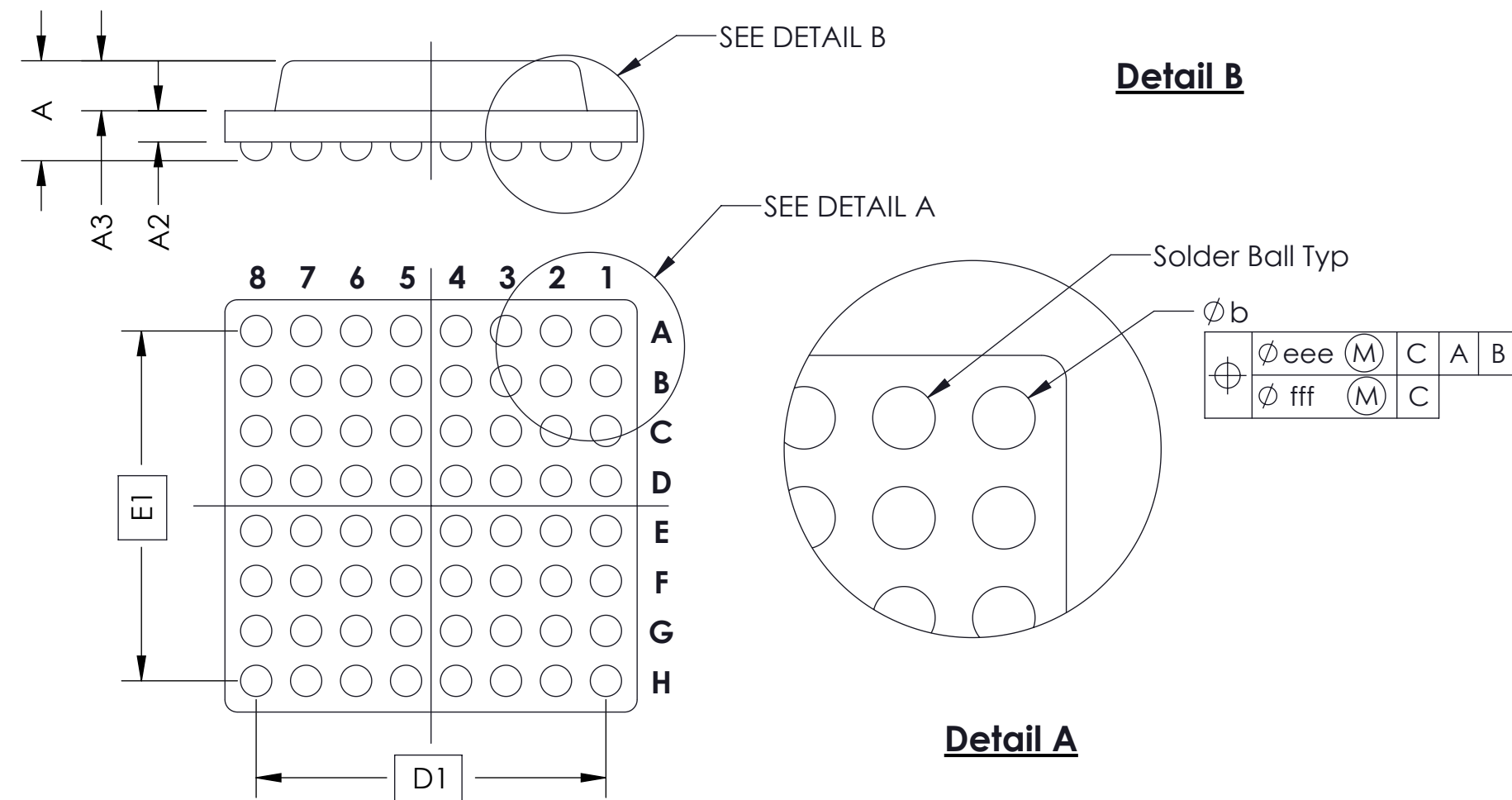
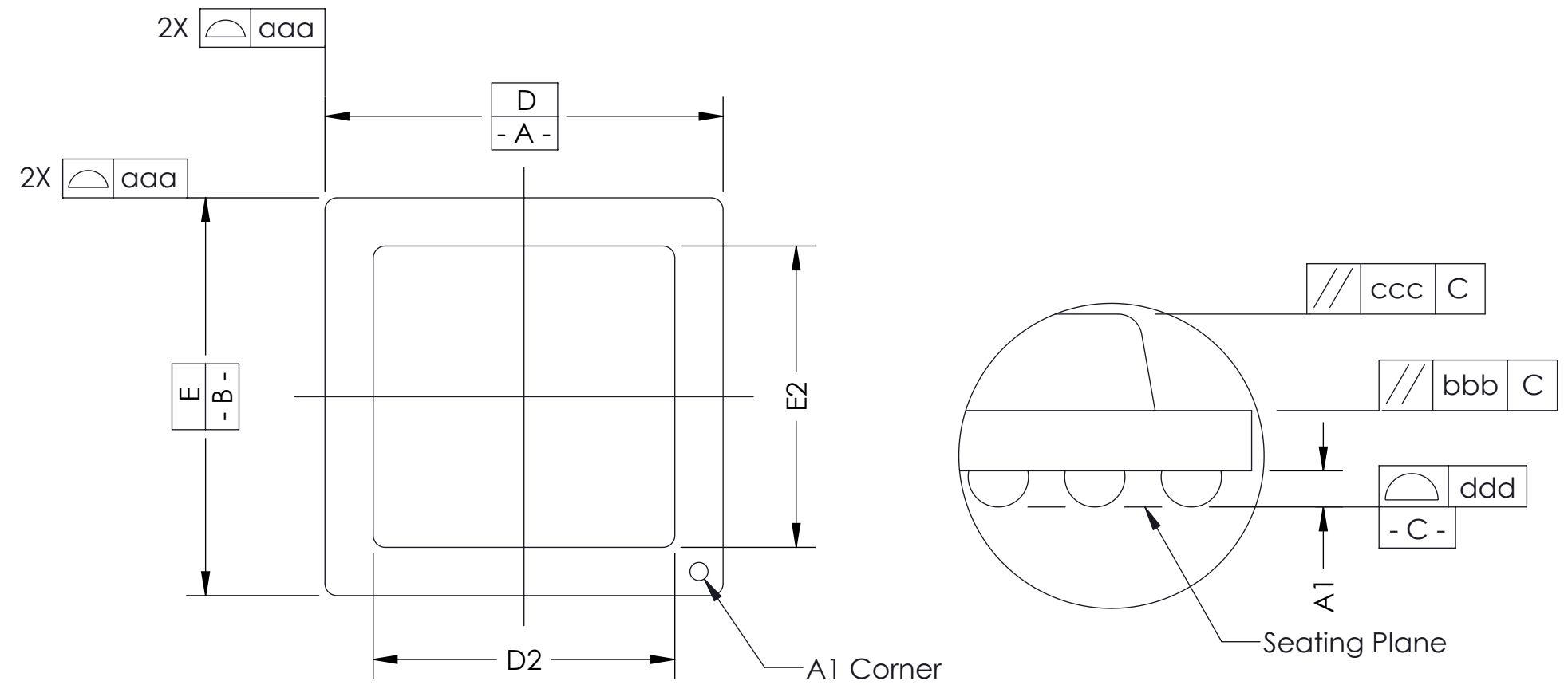
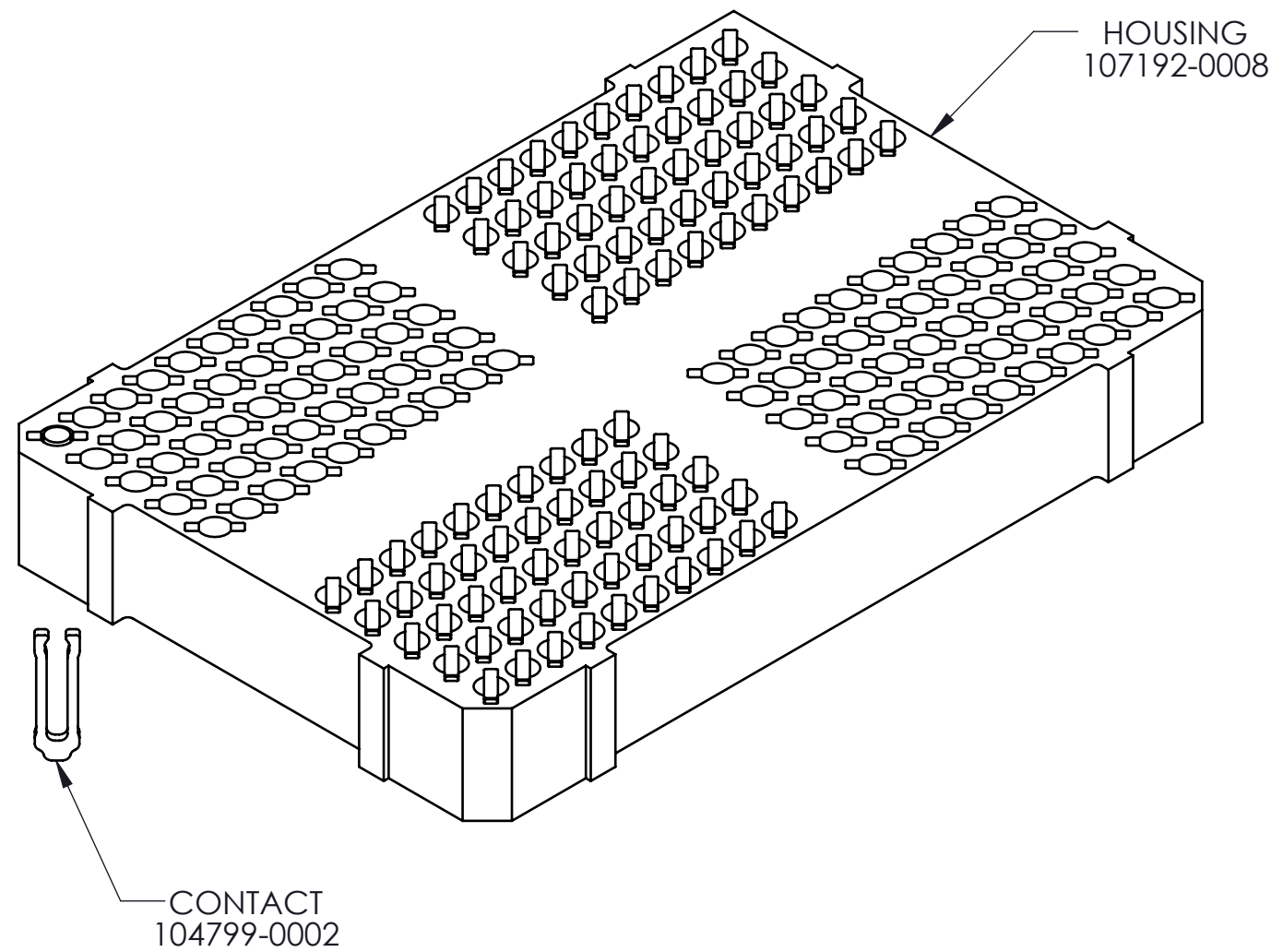
SOCKET FOR DEVICES THAT ARE WITHIN THESE SPECIFICATIONS

| | | | | | |
|---------------------|-----------|-----------|--------------------------|-----------|--------|
| Lead Count | N | 200 | Package Size | D | 10.00 |
| Columns | ND | 10 | | E | 15.00 |
| Rows | NE | 20 | Ball Spacing | D1 | 8.800 |
| Pitch | e | 0.80X0.65 | | E1 | 13.650 |
| Ball Size | b | 0.40±0.05 | Encapsulant/ Top Size | D2 | N/A |
| Total Thickness | A | N/A | | E2 | N/A |
| Ball Height | A1 | 0.250 MIN | Pattern Style | IRREGULAR | |
| Substrate Thickness | A2 | N/A | Perimeter Rows | N/A | |
| Top Thickness | A3 | | Center Array | N/A | |

Form Tolerances

| | | | | | |
|-----------|------------|------|----------|------------|------|
| Edge | aaa | 0.20 | Bottom | ddd | 0.15 |
| Substrate | bbb | 0.20 | Position | eee | 0.20 |
| Top | ccc | 0.20 | Position | fff | 0.10 |

* ALL DIMENSIONS ARE IN MILLIMETERS.



Generic Representation with Full Grid Array

| | | | | | | | | | | | |
|--|--|--|------------------------------------|------|----|----------|---------|-----|-----|----------|--|
| <p>PROPRIETARY AND CONFIDENTIAL</p> <p>THE INFORMATION CONTAINED IN THIS DRAWING IS THE SOLE PROPERTY OF IRONWOOD ELECTRONICS, INC. ANY REPRODUCTION IN PART OR AS A WHOLE WITHOUT THE WRITTEN PERMISSION OF IRONWOOD ELECTRONICS, INC IS PROHIBITED.</p> | <p>UNLESS OTHERWISE SPECIFIED:</p> <p>DIMENSIONS ARE IN MILLIMETERS</p> <p>TOLERANCES:</p> <p>ANGULAR: ± 1°</p> <p>X.X ±0.25</p> <p>X.XX ±0.10</p> <p>X.XXX ±0.050</p> | <table border="1"> <tr> <td>NAME</td> <td>DATE</td> </tr> <tr> <td>RS</td> <td>12/01/16</td> </tr> <tr> <td>CHECKED</td> <td>NSJ</td> </tr> <tr> <td>NSJ</td> <td>12/01/16</td> </tr> </table> | NAME | DATE | RS | 12/01/16 | CHECKED | NSJ | NSJ | 12/01/16 | <p>IRONWOOD ELECTRONICS, INC.</p> <p>1335 EAGANDALE COURT</p> <p>EAGAN, MINNESOTA 55121</p> <p>952-229-8200</p> |
| | NAME | DATE | | | | | | | | | |
| | RS | 12/01/16 | | | | | | | | | |
| | CHECKED | NSJ | | | | | | | | | |
| NSJ | 12/01/16 | | | | | | | | | | |
| <p>INTERPRET GEOMETRIC TOLERANCING PER:</p> <p>MATERIAL</p> <p>SEE B.O.M</p> <p>FINISH</p> | <p>LEGEND:</p> <p>△ NOTE CALLOUT</p> <p>◻ REVISION CHANGE</p> <p>○ ITEM NUMBER</p> | <p>TITLE:</p> <p>SCKT, 200GRY 10X15-0.80X0.65</p> | <p>DWG. NO.</p> <p>111020-XXXX</p> | | | | | | | | |
| <p>DO NOT SCALE DRAWING</p> | <p>SCALE: 10:1</p> | <p>SIZE: C</p> | <p>REV</p> <p>C</p> | | | | | | | | |
| | | <p>SHEET 2 OF 2</p> | | | | | | | | | |