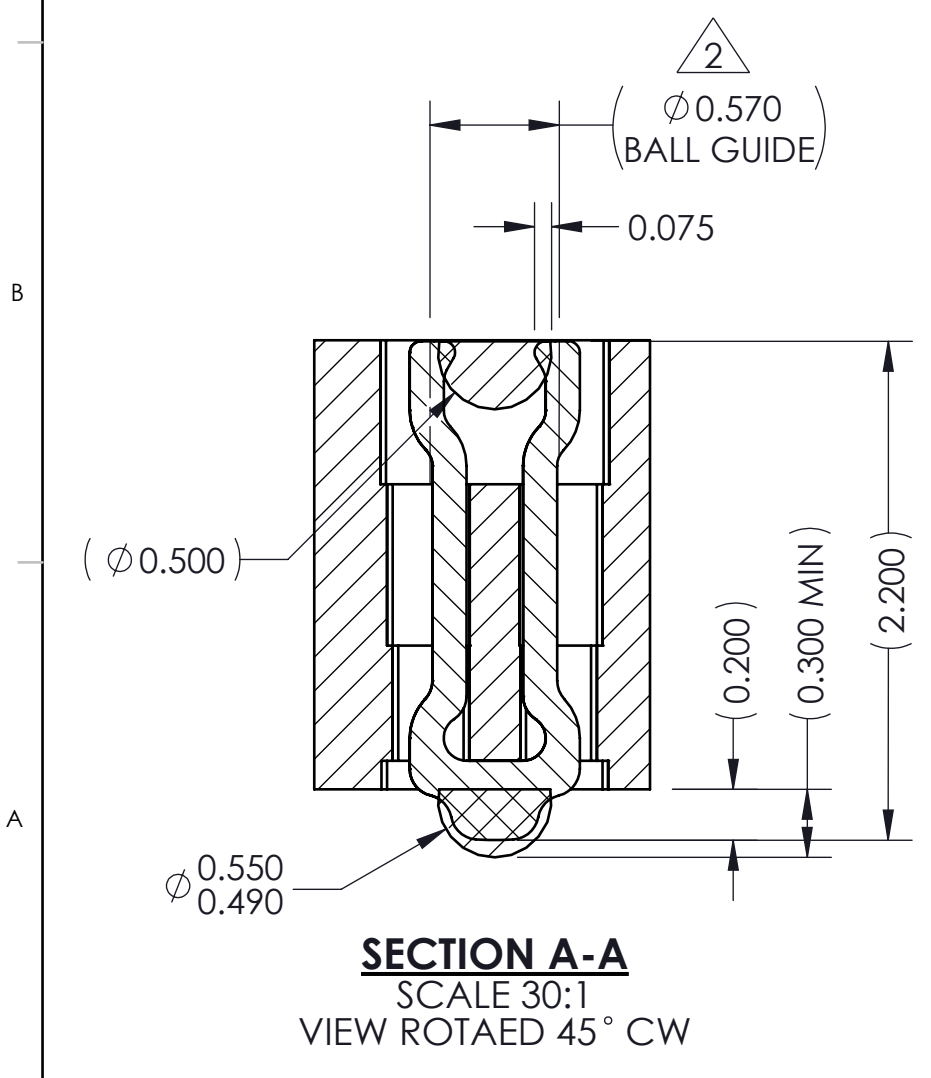
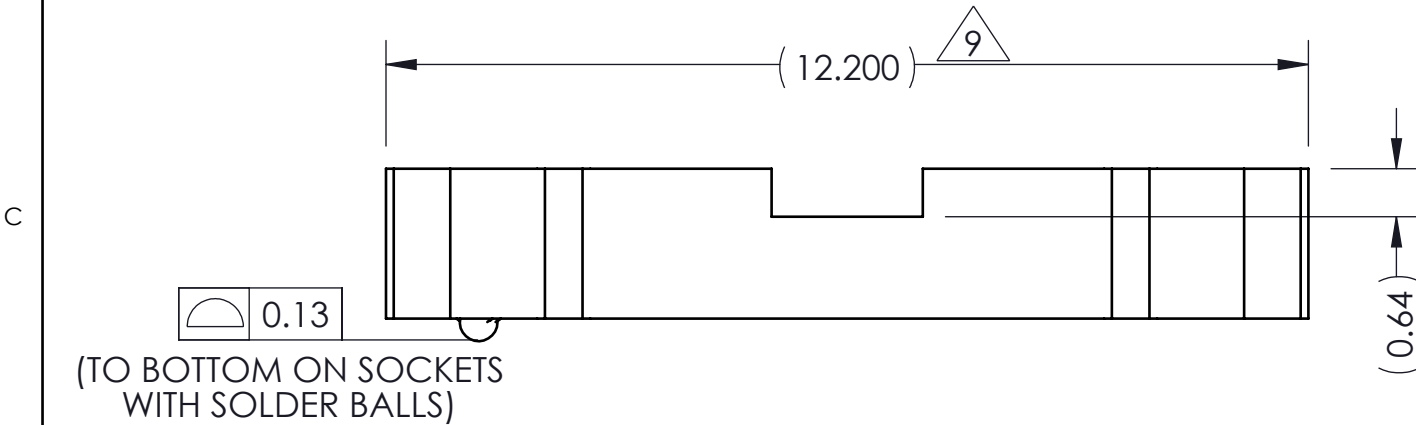
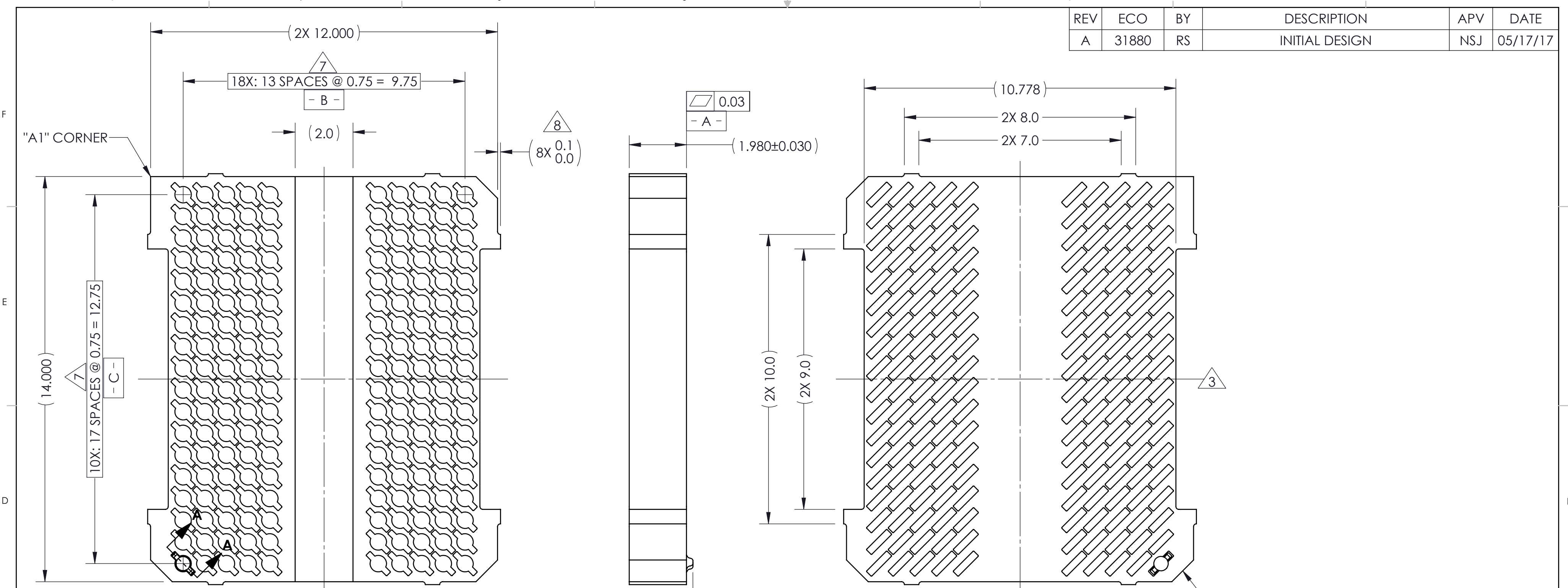


REV	ECO	BY	DESCRIPTION	APV	DATE
A	31880	RS	INITIAL DESIGN	NSJ	05/17/17



PART NUMBER	DESCRIPTION
111027-0001	SCKT, 180GRY 12.0X14.0-0.75 (EUTECTIC SOLDER BALL)
111027-0002	SCKT, 180GRY 12.0X14.0-0.75 (SAC305 SOLDER BALL)
111027-0003	SCKT, 180GRY 12.0X14.0-0.75 (WITHOUT SOLDER BALL)
103864-0066	PRESS DEVICE INSERT, 12.0 X 14.0 (SOLD SEPARATELY)
104553-0465	STENCIL, FLEX, 180GRY 12.0X14.0-0.75 (SOLD SEPARATELY)
105900-0004	EXTRACTION TOOL, 4 X 53 (SOLD SEPARATELY)

(TO BOTTOM OF CONTACT ON SOCKETS WITHOUT SOLDER BALLS)

- NOTES:
- UNLESS OTHERWISE NOTED, ALL FEATURES LOCATED  $\pm 0.10$  A B C
  - DATUM'S - B - AND - C - ARE DETERMINED BY  $\phi 0.570$  FEATURES ON CORNER SLOTS.
  - CENTER OF CONTACT/SOLDER BALL PATTERN.
  - REFERENCE HSIO TECHNOLOGIES SPECIFICATION 700001-0001 FOR SOLDER ATTACHMENT.
  - REFERENCE HSIO TECHNOLOGIES SPECIFICATION 700001-0002 FOR APPLICATION NOTES.
  - DIMENSION LOCATES CENTER OF CONTACT/SLOT.
  - TOOLING MARKS PERMITTED. MAXIMUM 0.10 PROTRUSION SHOWN.
  - DIMENSION INCLUDES 0.10 PROTRUSION.

<p><b>HSIO technologies</b> PROPRIETARY AND CONFIDENTIAL</p> <p>THE INFORMATION CONTAINED IN THIS DRAWING IS THE SOLE PROPERTY OF HSIO TECHNOLOGIES, LLC. ANY REPRODUCTION IN PART OR AS A WHOLE WITHOUT THE WRITTEN PERMISSION OF HSIO TECHNOLOGIES, LLC IS PROHIBITED.</p>	UNLESS OTHERWISE SPECIFIED: DIMENSIONS ARE IN MILLIMETERS TOLERANCES: ANGULAR: $\pm 1^\circ$ X.X $\pm 0.25$ X.XX $\pm 0.10$ X.XXX $\pm 0.050$	NAME DRAWN RS CHECKED NSJ	DATE 05/17/17 05/17/17	<p><b>HSIO TECHNOLOGIES, LLC.</b> 13400 68th AVENUE NORTH MAPLE GROVE, MINNESOTA 55311 763-447-6260</p> <p>TITLE: <b>SCKT, 180GRY 12.0X14.0-0.75</b></p> <p>DWG. NO. 111027-XXXX REV A</p> <p>SCALE: 10:1 SIZE: C SHEET 1 OF 2</p>
	INTERPRET GEOMETRIC TOLERANCING PER:	LEGEND: △ NOTE CALLOUT □ REVISION CHANGE ○ ITEM NUMBER		
	MATERIAL SEE B.O.M			
	FINISH DO NOT SCALE DRAWING			

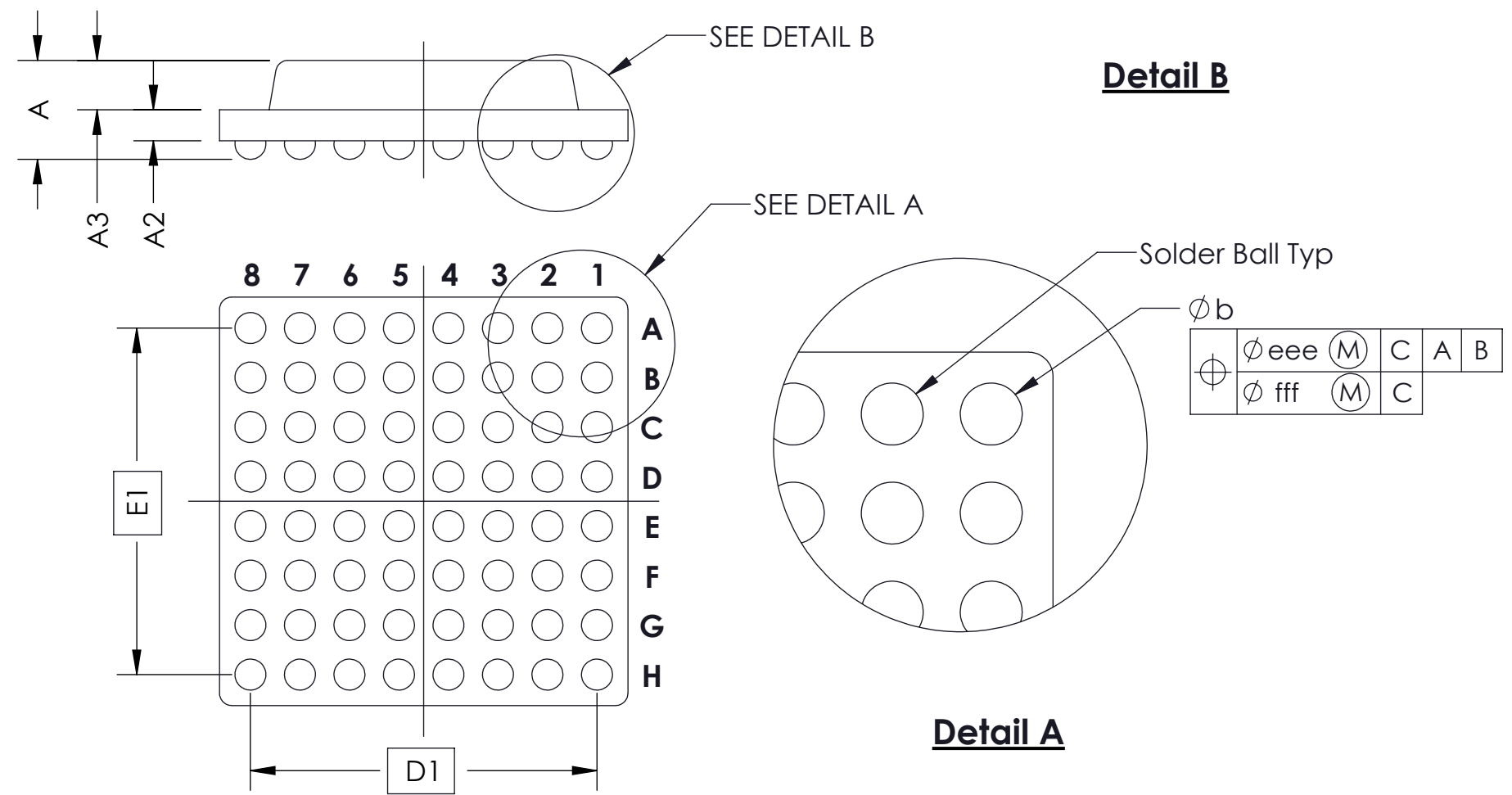
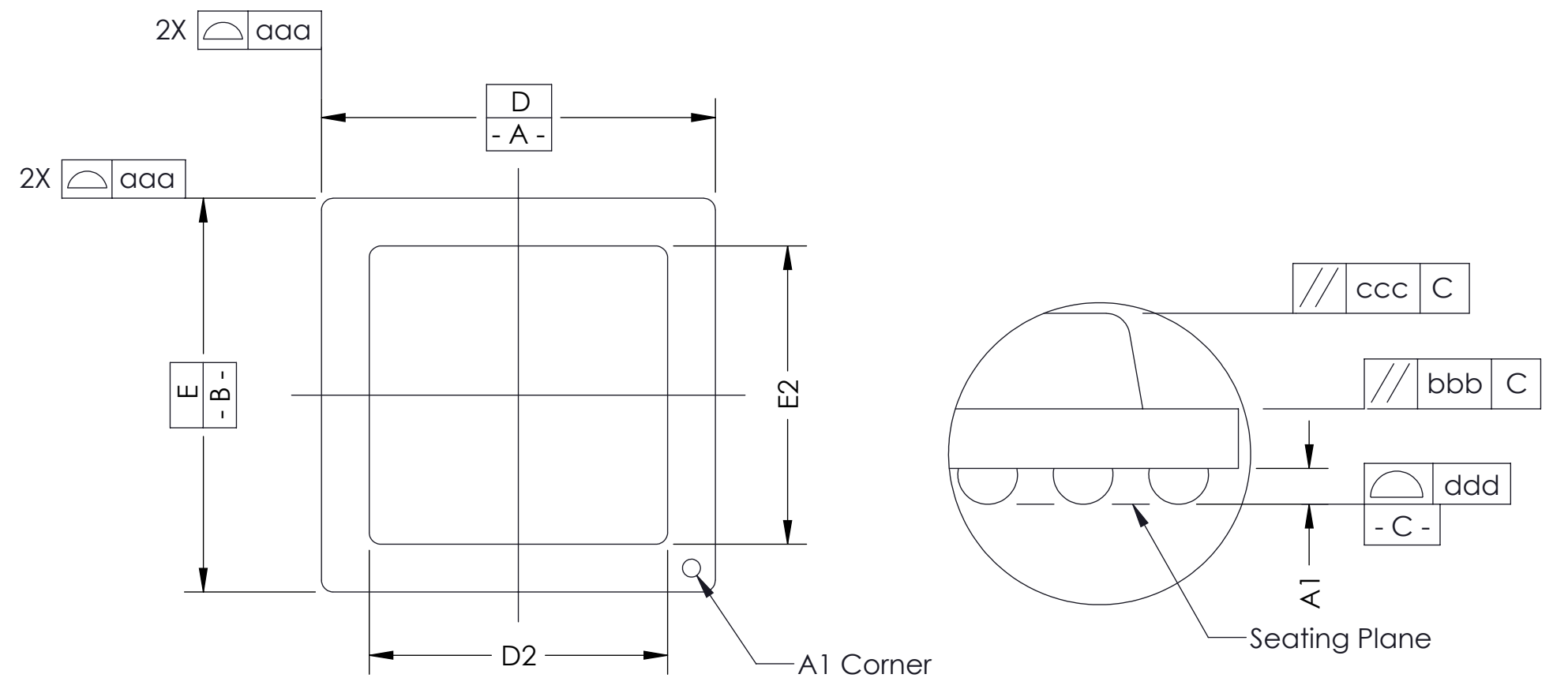
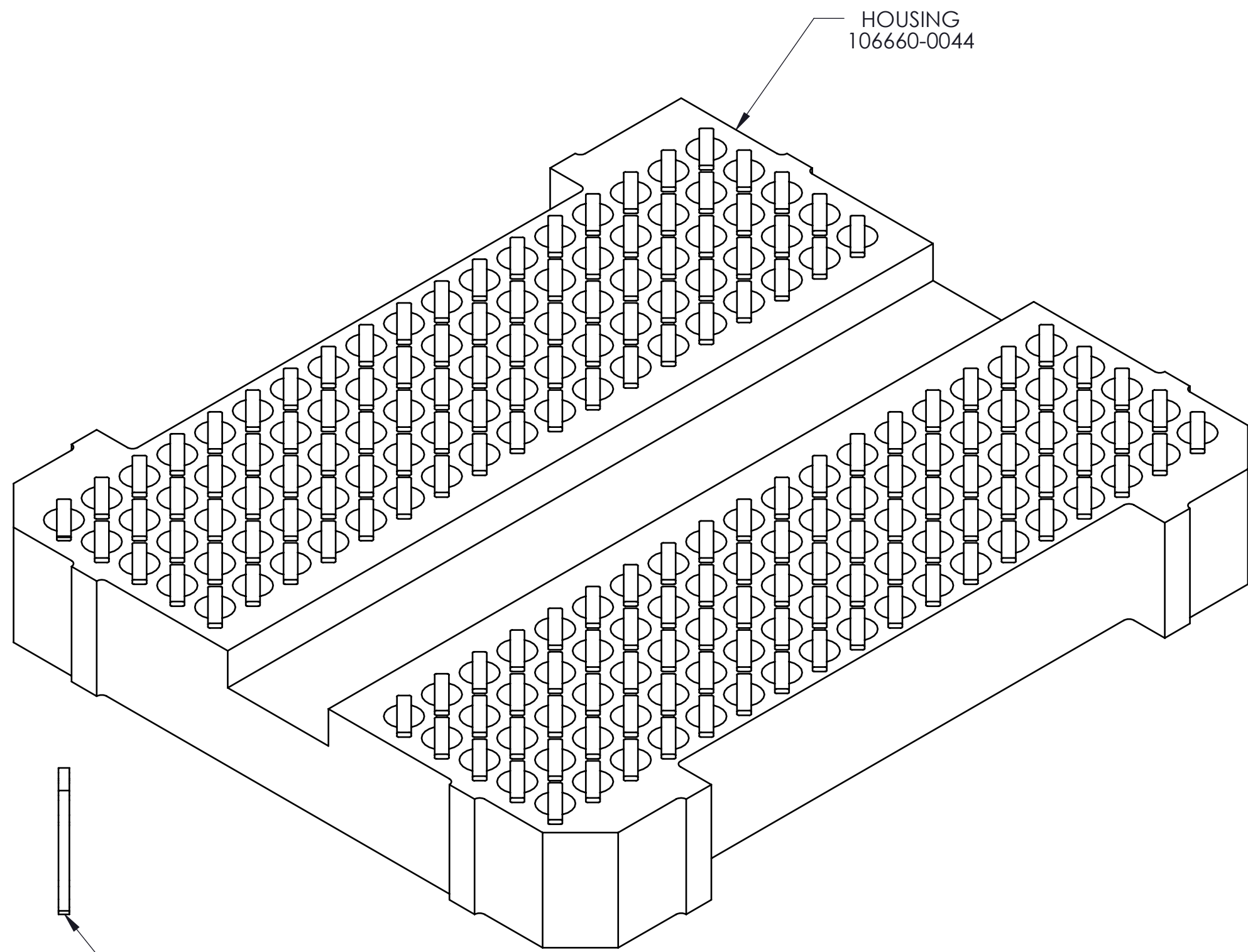
**SOCKET FOR DEVICES THAT ARE WITHIN THESE SPECIFICATIONS**

Lead Count	<b>N</b>	180	Package Size	<b>D</b>	12.00
Columns	<b>ND</b>	10		<b>E</b>	14.00
Rows	<b>NE</b>	18	Ball Spacing	<b>D1</b>	9.750
Pitch	<b>e</b>	0.75		<b>E1</b>	12.750
Ball Size	<b>b</b>	0.50±0.05	Encapsulant/ Top Size	<b>D2</b>	N/A
Total Thickness	<b>A</b>	N/A		<b>E2</b>	N/A
Ball Height	<b>A1</b>	0.300 MIN	Pattern Style	IRREGULAR	
Substrate Thickness	<b>A2</b>	N/A	Perimeter Rows	N/A	
Top Thickness	<b>A3</b>		Center Array	N/A	

**Form Tolerances**

Edge	<b>aaa</b>	0.20	Bottom	<b>ddd</b>	0.15
Substrate	<b>bbb</b>	0.20	Position	<b>eee</b>	0.20
Top	<b>ccc</b>	0.20	Position	<b>fff</b>	0.10

\* ALL DIMENSIONS ARE IN MILLIMETERS.



**Generic Representation with Full Grid Array**

<p><b>HSIO technologies</b> PROPRIETARY AND CONFIDENTIAL</p> <p>THE INFORMATION CONTAINED IN THIS DRAWING IS THE SOLE PROPERTY OF HSIO TECHNOLOGIES, LLC. ANY REPRODUCTION IN PART OR AS A WHOLE WITHOUT THE WRITTEN PERMISSION OF HSIO TECHNOLOGIES, LLC IS PROHIBITED.</p>	UNLESS OTHERWISE SPECIFIED: DIMENSIONS ARE IN MILLIMETERS TOLERANCES: ANGULAR: ± 1° X.X ±0.25 X.XX ±0.10 X.XXX ±0.050	<table border="1"> <tr> <th>NAME</th> <th>DATE</th> </tr> <tr> <td>DRAWN RS</td> <td>05/17/17</td> </tr> <tr> <td>CHECKED NSJ</td> <td>05/17/17</td> </tr> </table>	NAME	DATE	DRAWN RS	05/17/17	CHECKED NSJ	05/17/17	<p><b>HSIO TECHNOLOGIES, LLC.</b> 13400 68th AVENUE NORTH MAPLE GROVE, MINNESOTA 55311 763-447-6260</p>
	NAME	DATE							
	DRAWN RS	05/17/17							
	CHECKED NSJ	05/17/17							
INTERPRET GEOMETRIC TOLERANCING PER: MATERIAL FINISH	<p>LEGEND:</p> <ul style="list-style-type: none"> <li>△ NOTE CALLOUT</li> <li>◻ REVISION CHANGE</li> <li>○ ITEM NUMBER</li> </ul>	<p>TITLE: <b>SCKT, 180GRY 12.0X14.0-0.75</b></p>							
DO NOT SCALE DRAWING		<table border="1"> <tr> <td>DWG. NO.</td> <td>REV</td> </tr> <tr> <td><b>111027-XXXX</b></td> <td><b>A</b></td> </tr> </table>	DWG. NO.	REV	<b>111027-XXXX</b>	<b>A</b>			
DWG. NO.	REV								
<b>111027-XXXX</b>	<b>A</b>								
		<table border="1"> <tr> <td>SCALE: 10:1</td> <td>SIZE: C</td> <td>SHEET 2 OF 2</td> </tr> </table>	SCALE: 10:1	SIZE: C	SHEET 2 OF 2				
SCALE: 10:1	SIZE: C	SHEET 2 OF 2							