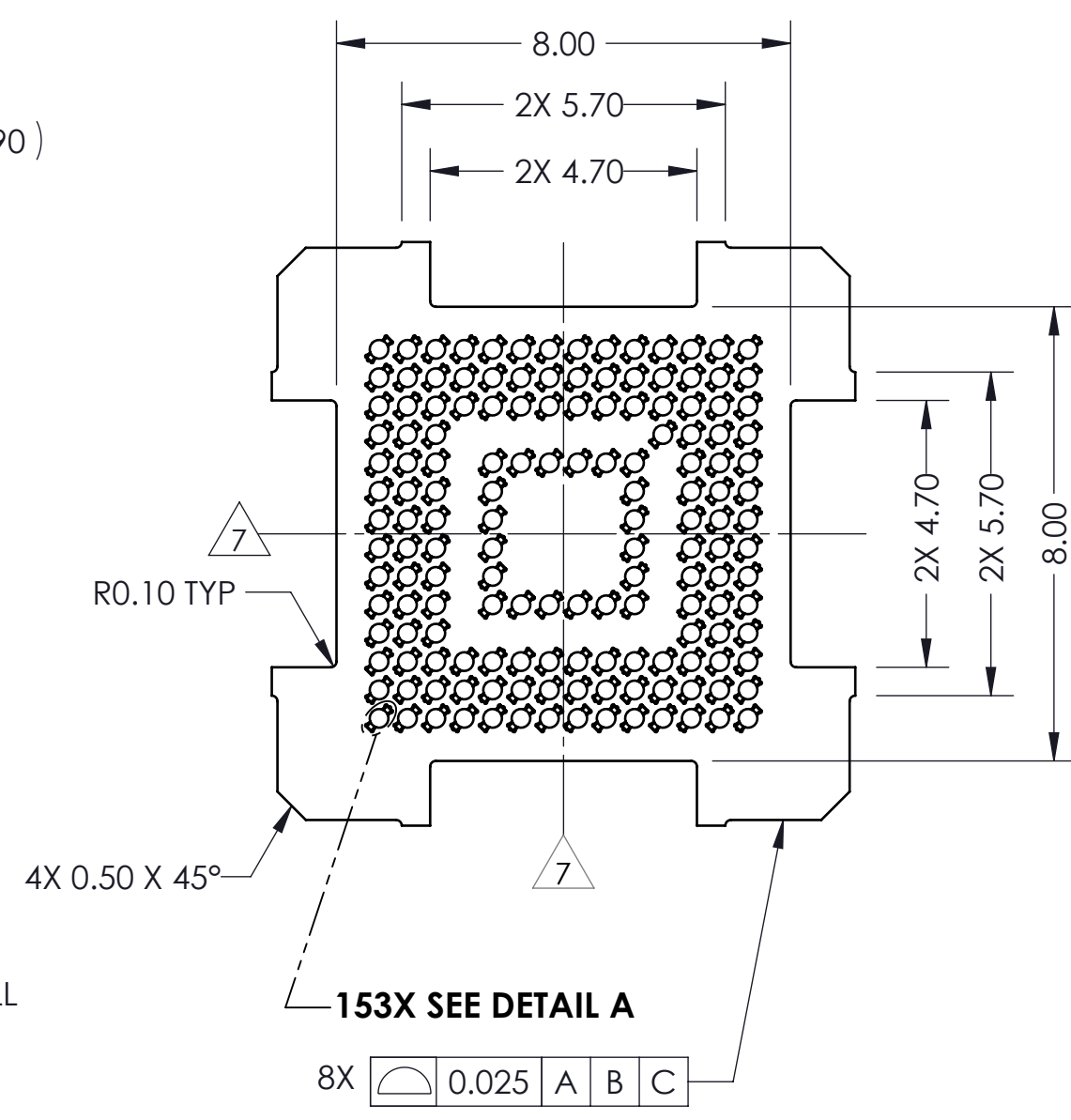
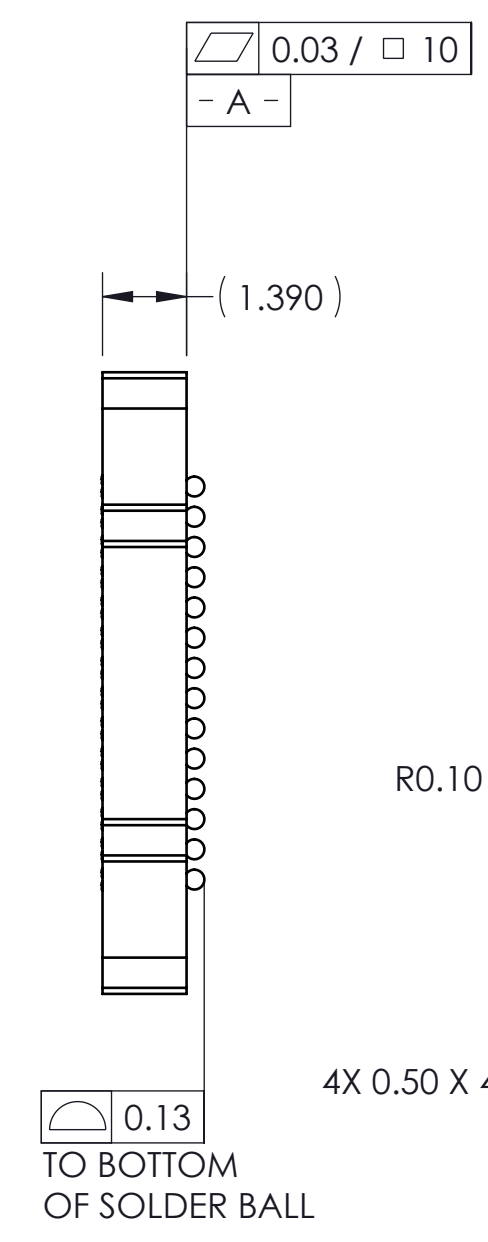
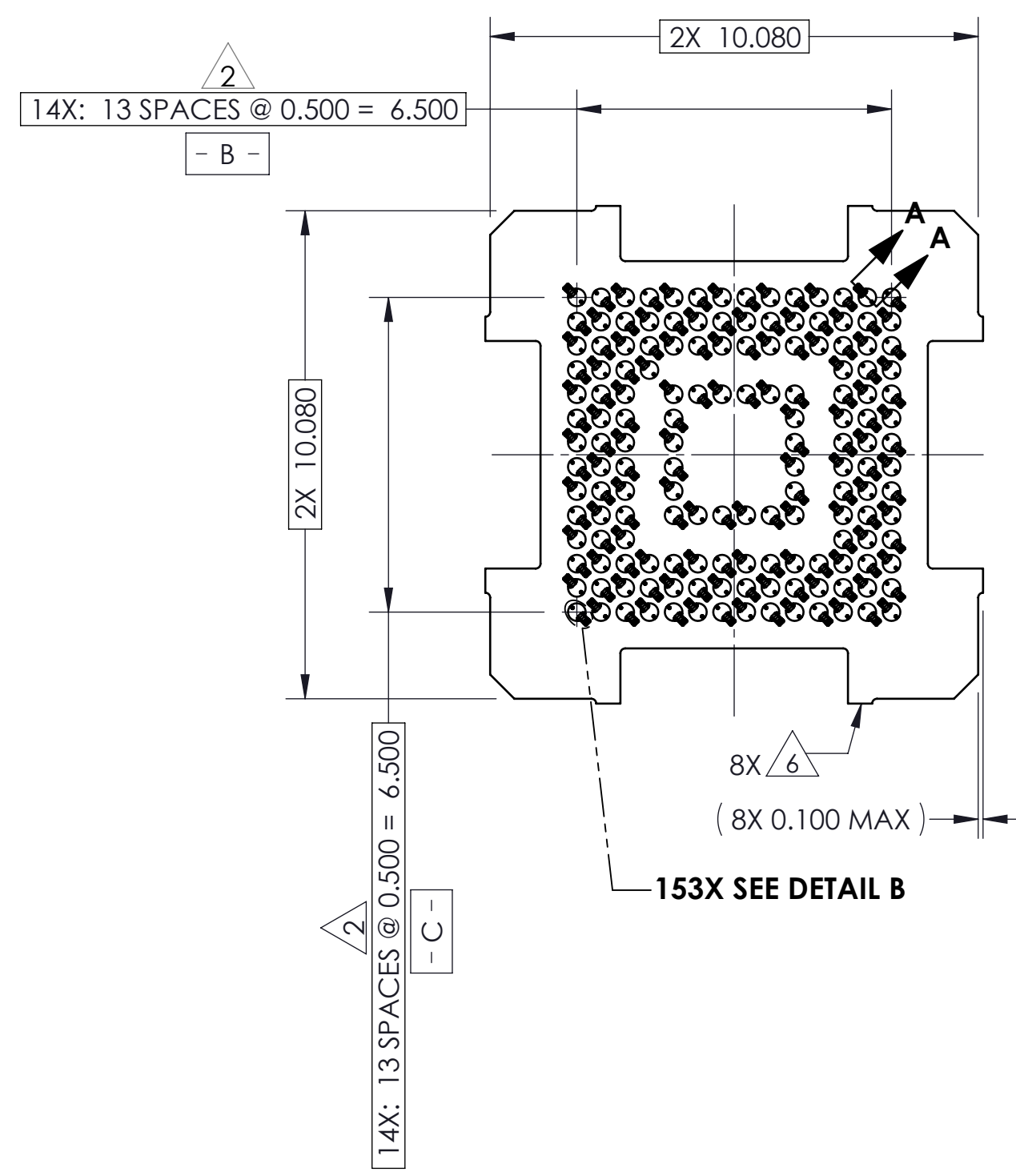
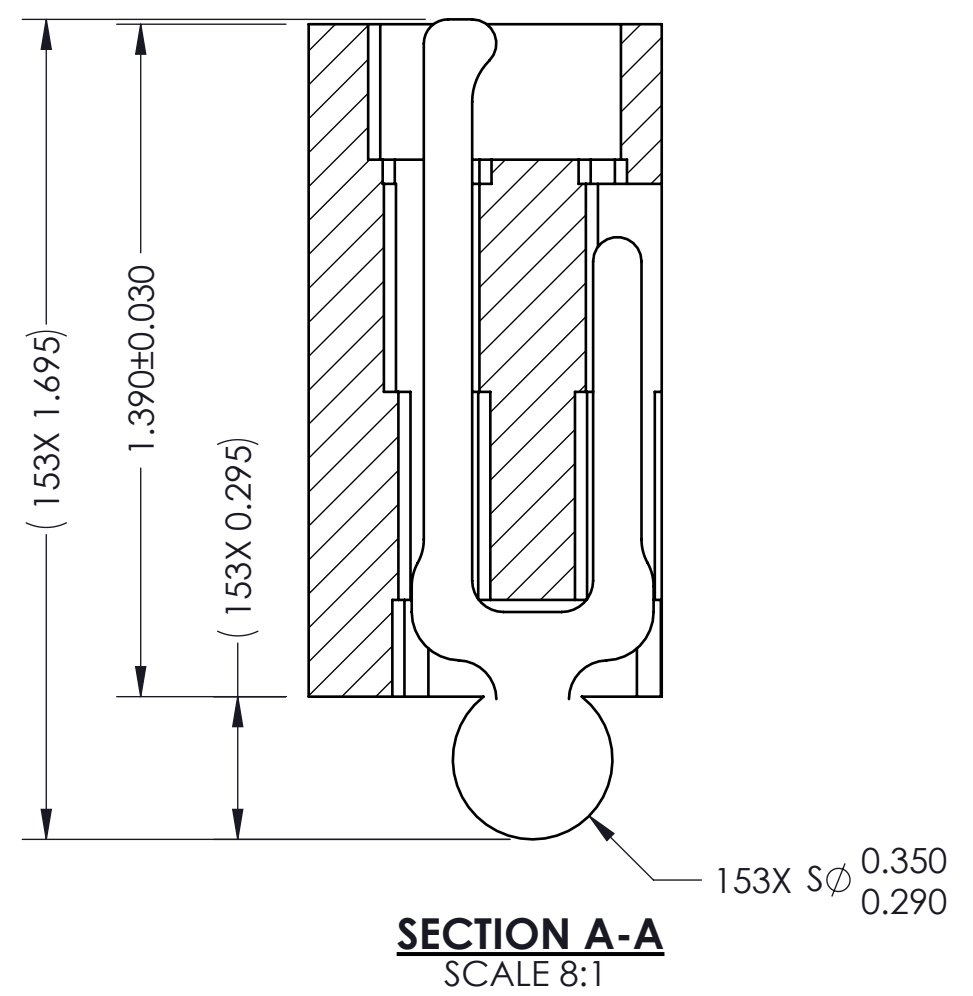
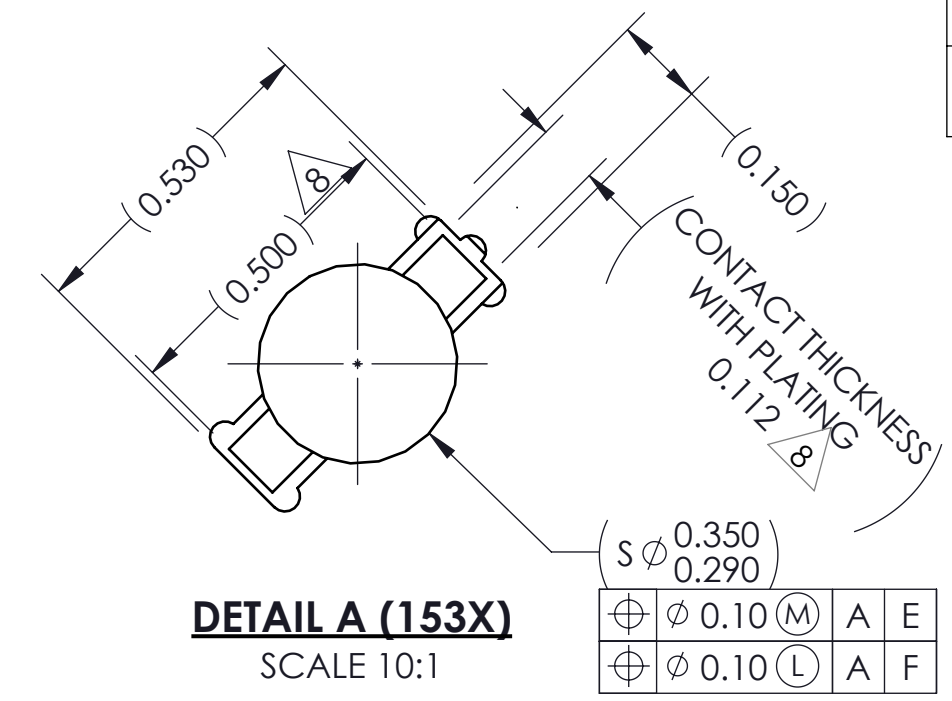
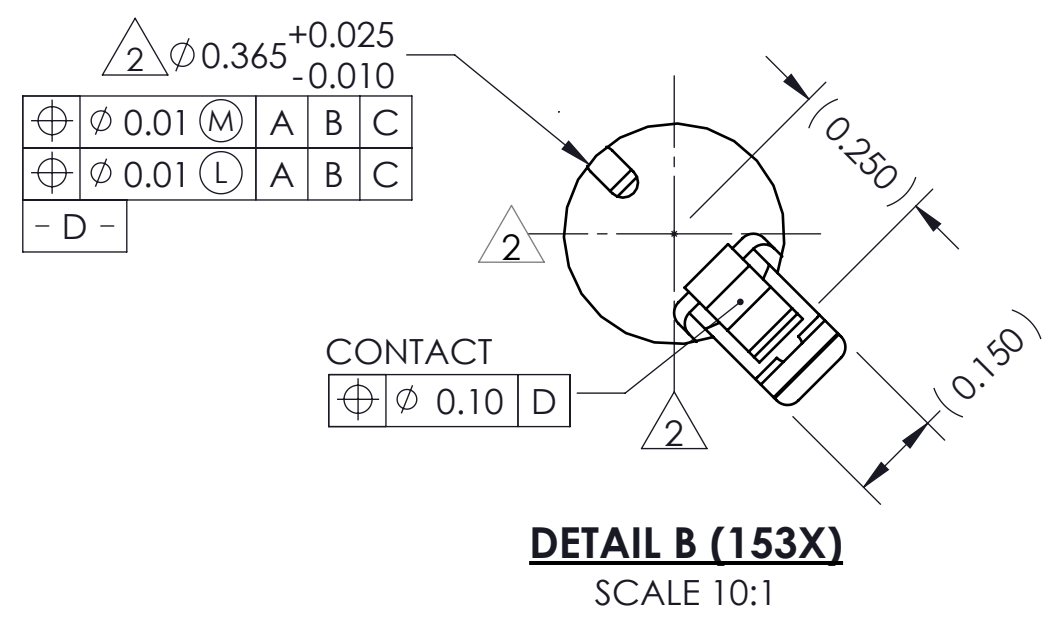


REV	ECO	BY	DESCRIPTION	APV	DATE
A	7351	DP	INITIAL DESIGN	RS	11/21/22



- NOTES:
- REFERENCE IRONWOOD ELECTRONICS SPECIFICATION 70001-0001 FOR SOLDER ATTACHMENT.
 - LOCATES CENTER OF CONTACT/ SLOT.
 - REFERENCE IRONWOOD ELECTRONICS SPECIFICATION 70001-0002 FOR APPLICATION NOTES.
 - FOOTPRINT PART NUMBER IS 104311-0405.
 - DATUMS - B - AND - C - ARE DETERMINED BY Ø0.365 FEATURES ON CORNER SLOTS.
 - TOOLING MARKS PERMITTED. MAXIMUM 0.10 PROTRUSION (SHOWN).
 - E - CENTER OF BALL PATTERN.
 - F - CENTER OF CONTACT.

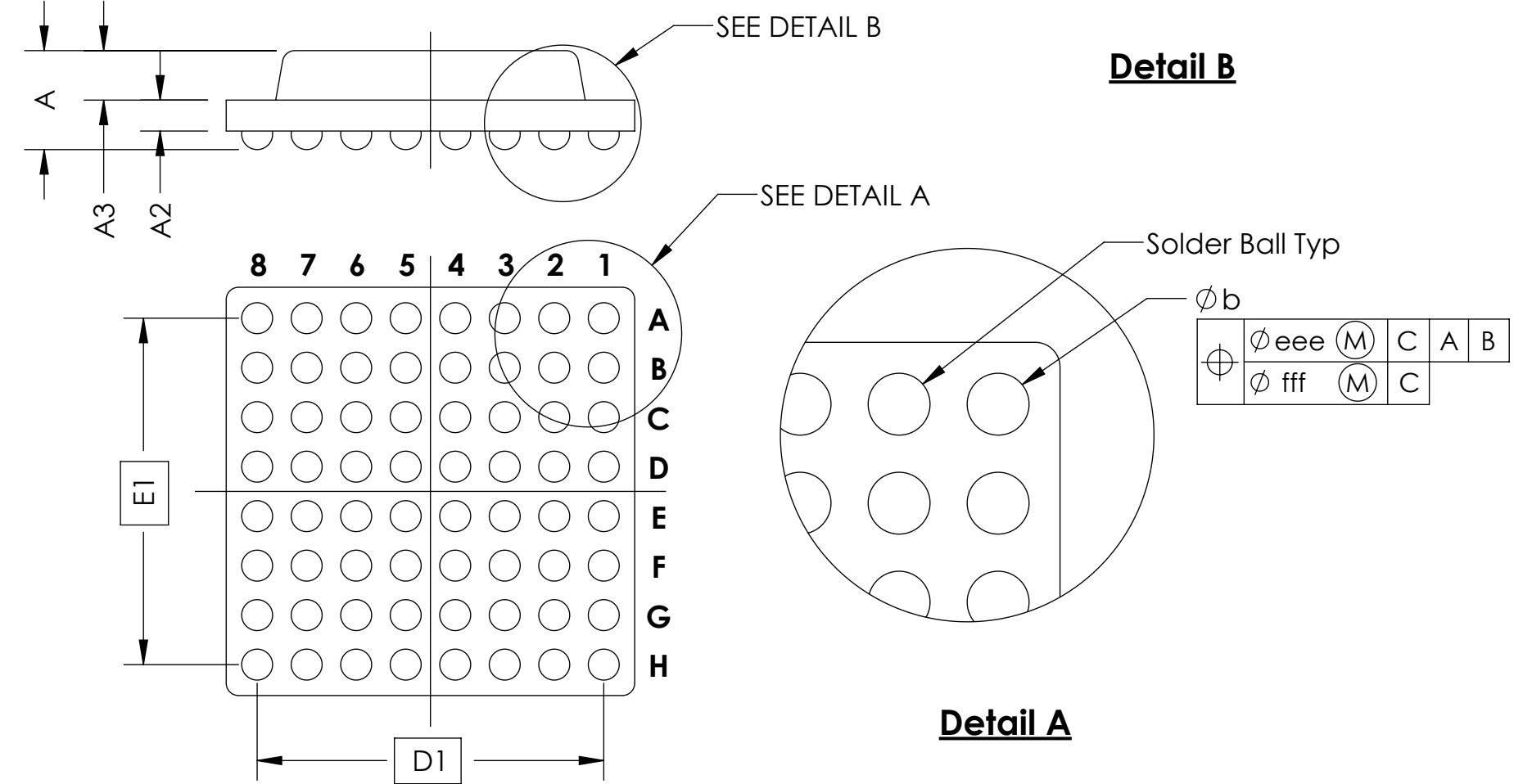
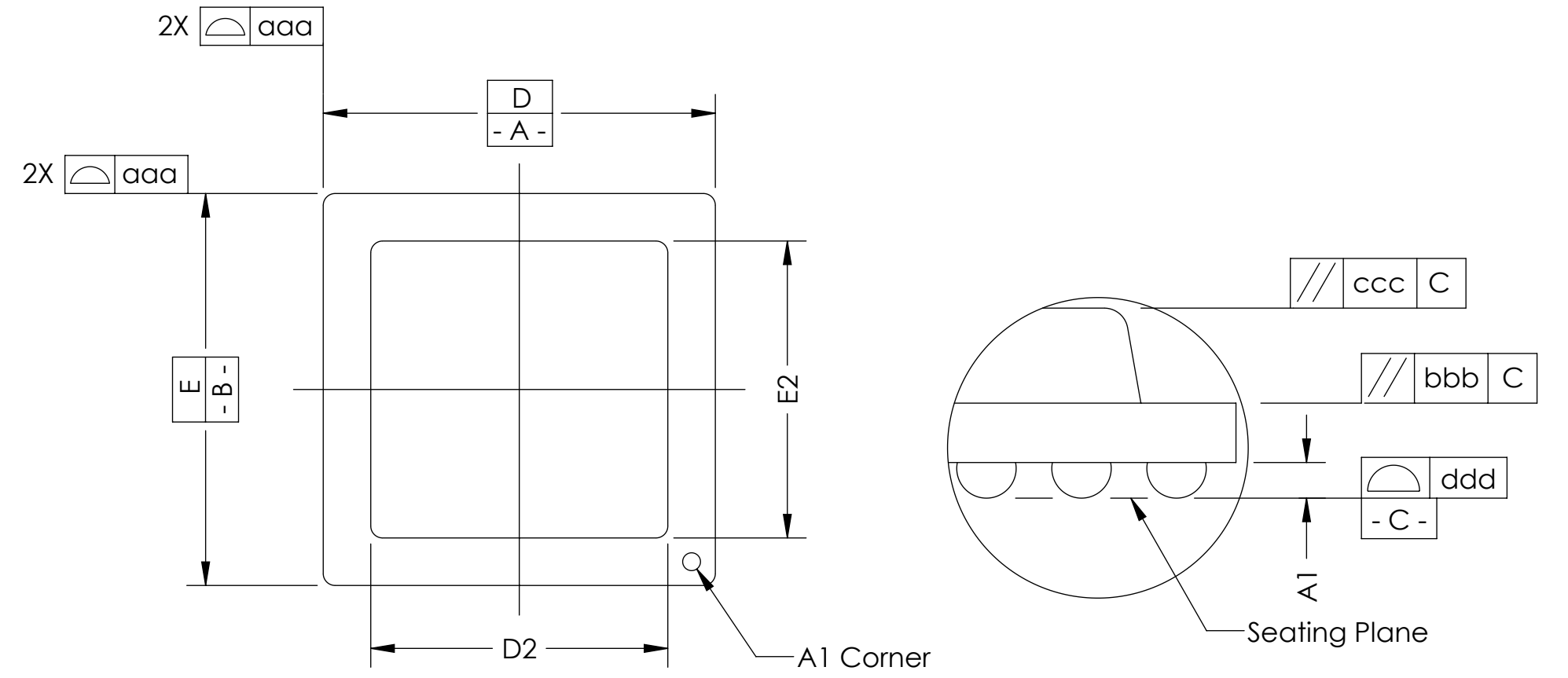
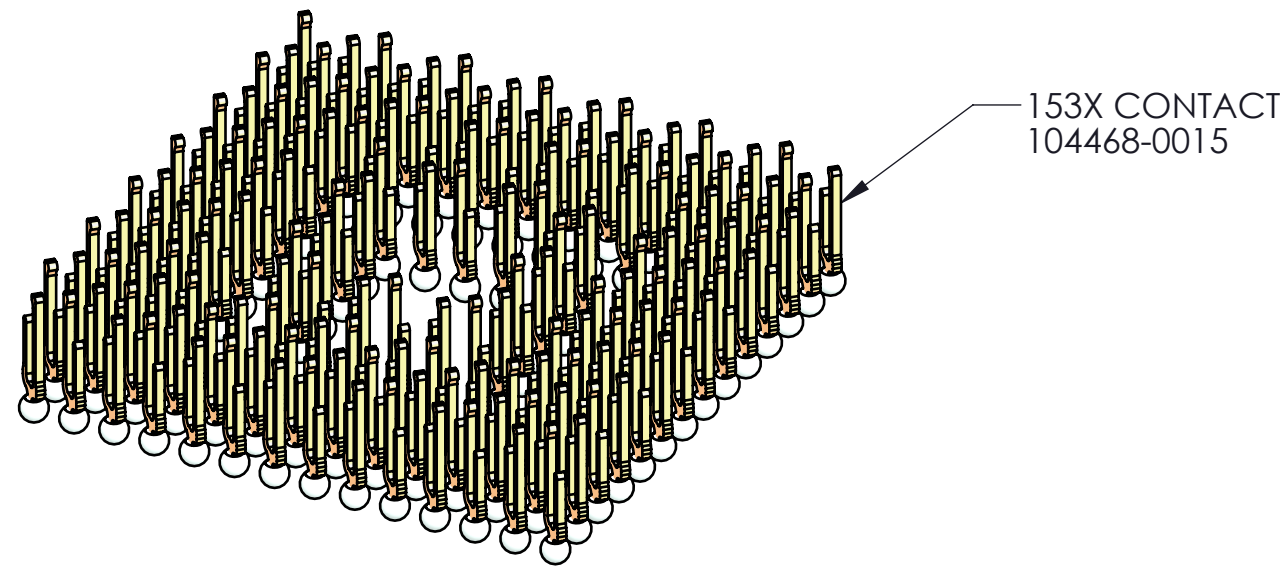
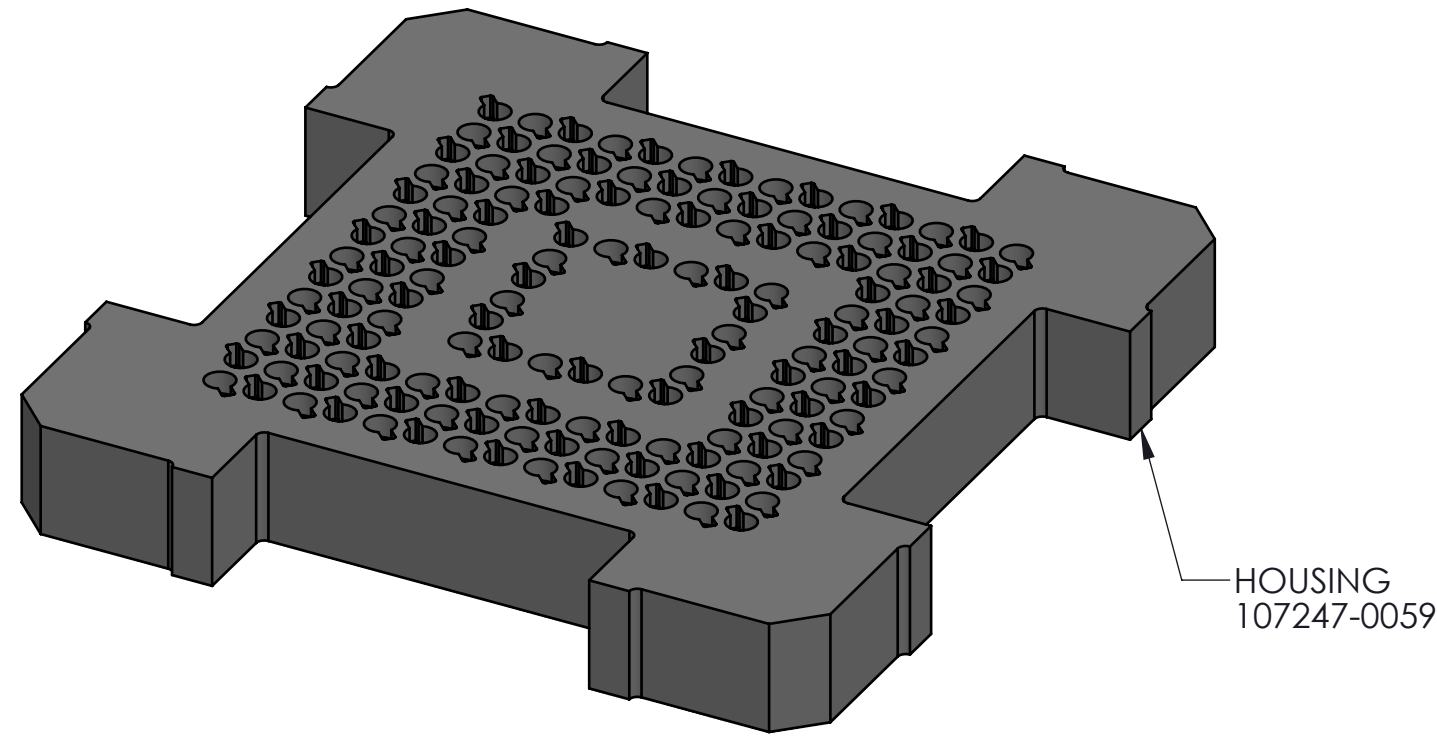
Parts List	
Part Number	Description
107248-0059	CS, 153G4010-0.50, W/O SOLDER BALLS (SOLD SEPARATELY)
103864-0033	PRESS, DEVICE INSERT, G40 10.0 X 10.0 (SOLD SEPARATELY)
108639-0086	ALIGN, FRAME, 10.0X10.0 (SOLD SEPARATELY)
105900-0004	EXTRACTION TOOL, 4 X 53 (SOLD SEPARATELY)



<p>PROPRIETARY AND CONFIDENTIAL</p> <p>THE INFORMATION CONTAINED IN THIS DRAWING IS THE SOLE PROPERTY OF IRONWOOD ELECTRONICS, INC. ANY REPRODUCTION IN PART OR AS A WHOLE WITHOUT THE WRITTEN PERMISSION OF IRONWOOD ELECTRONICS, INC IS PROHIBITED.</p>	UNLESS OTHERWISE SPECIFIED:	NAME	DATE	IRONWOOD ELECTRONICS, INC. 1335 EAGANDALE COURT EAGAN, MINNESOTA 55121 952-229-8200	
	DIMENSIONS ARE IN MILLIMETERS	DRAWN	DJP		11/21/2022
	TOLERANCES:	CHECKED	RS		11/21/2022
	ANGULAR: ± 1° X.X ±0.25 X.XX ±0.10 X.XXX ±0.050	LEGEND:			TITLE:
INTERPRET GEOMETRIC TOLERANCING PER:	△	NOTE CALLOUT	SCKT, 153G4010-0.50, W/ SAC305 SOLDER BALLS		
MATERIAL	◇	REVISION CHANGE	DWG. NO.		
SEE BOM	○	ITEM NUMBER	107250-0059		
FINISH			REV		
DO NOT SCALE DRAWING			A		
	SCALE: 10:1	SIZE: C	SHEET 1 OF 2		

SOCKET FOR DEVICES THAT ARE WITHIN THESE SPECIFICATIONS					
Lead Count	N	153	Package Size	D	10.00
Columns	ND	14		E	10.00
Rows	NE	14	Ball Spacing	D1	6.500
Pitch	e	0.50		E1	6.500
Ball Size	b	0.30±0.05	Encapsulant/ Top Size	D2	n/a
Total Thickness	A	n/a		E2	n/a
Ball Height	A1	0.225 min.	Pattern Style	IRREGULAR*	
Substrate Thickness	A2	n/a	Perimeter Rows	3	
Top Thickness	A3		Center Array	n/a	
Form Tolerances					
Edge	aaa	0.10	Bottom	ddd	0.08
Substrate	bbb	0.10	Position	eee	0.15
top	ccc	0.10	Position	fff	0.05

All dimensions are in millimeters.
* See footprint for pattern details.



Generic Representation with Full Grid Array

PROPRIETARY AND CONFIDENTIAL				
THE INFORMATION CONTAINED IN THIS DRAWING IS THE SOLE PROPERTY OF IRONWOOD ELECTRONICS, INC. ANY REPRODUCTION IN PART OR AS A WHOLE WITHOUT THE WRITTEN PERMISSION OF IRONWOOD ELECTRONICS, INC. IS PROHIBITED.				
UNLESS OTHERWISE SPECIFIED:	NAME	DATE	IRONWOOD ELECTRONICS, INC. 1335 EAGANDALE COURT EAGAN, MINNESOTA 55121 952-229-8200	
DIMENSIONS ARE IN MILLIMETERS	DRAWN	DJP		11/21/2022
TOLERANCES: ANGULAR: ± 1° X.X ±0.25 X.XX ±0.10 X.XXX ±0.050	CHECKED	RS		11/21/2022
LEGEND: △ NOTE CALLOUT ◇ REVISION CHANGE ○ ITEM NUMBER			TITLE: SCKT, 153G4010-0.50, W/ SAC305 SOLDER BALLS	
			DWG. NO. 107250-0059	REV A
	SCALE: 5:1	SIZE: C	SHEET 2 OF 2	