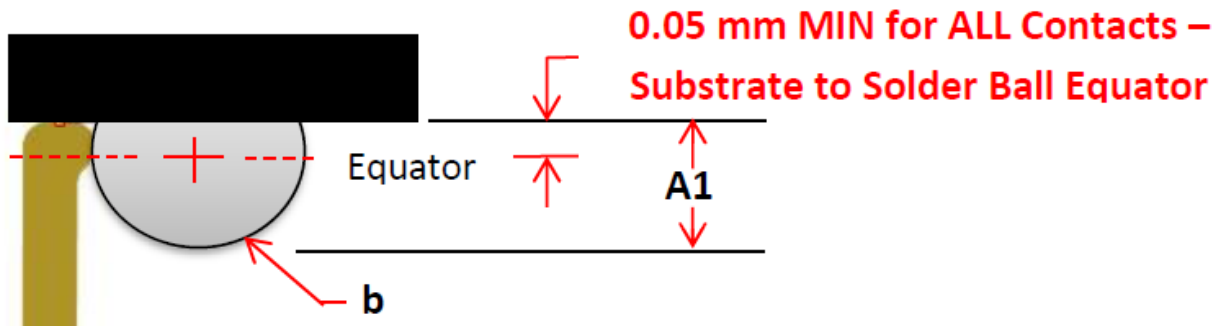
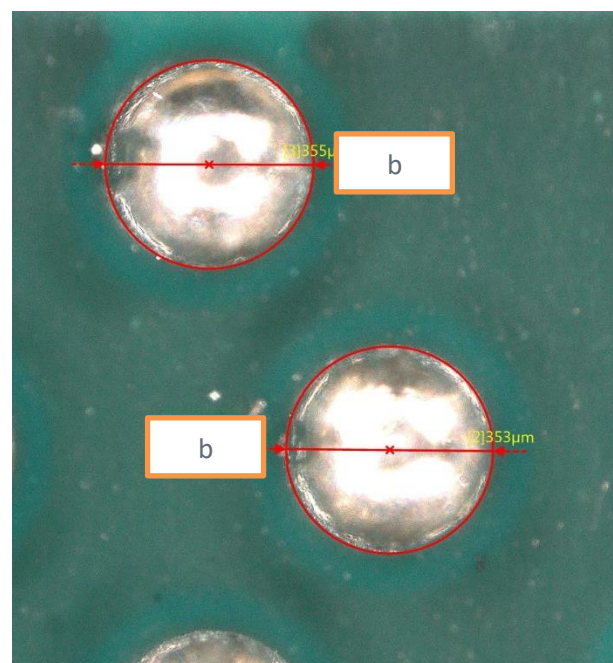
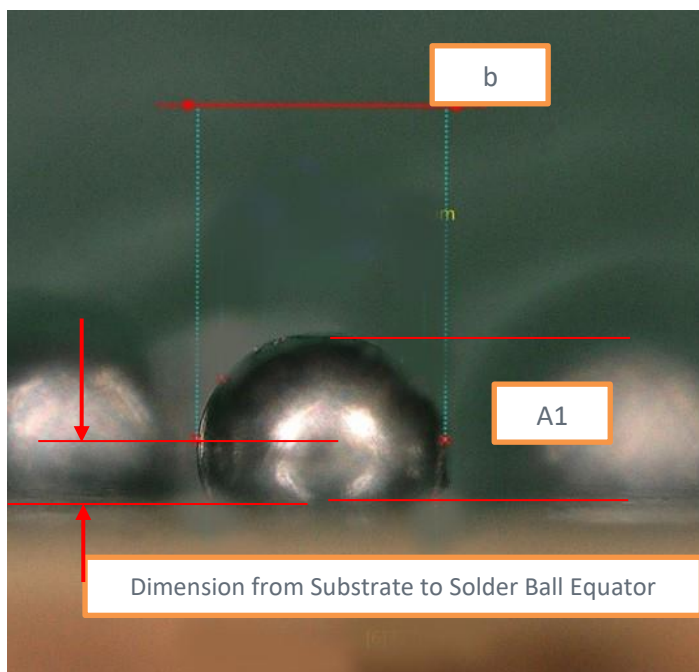


## Solder Ball Critical measurements for compatibility with Grypper Contacts



The 3 Critical measurements are:

- **Solder ball Diameter** -Typically “b” dimension on drawings –
  - this determines which contact is used in the design of Grypper sockets. Grypper contacts are design to work in 0.05 increments of solder ball diameters
- **The Hight of the Solder ball** - Typically the A1 dimension - along with the resulting dimension from the
- **Substrate to the Equator of the solder ball**
  - This is critical to ensure the contact tip will grab onto the solder ball and is past the equator of the solder ball
- Other non- critical measurements to check are overall D and E – size of the device, and pitch



Above Photos showing critical dimension / requirements for the Grypper contact to function correctly