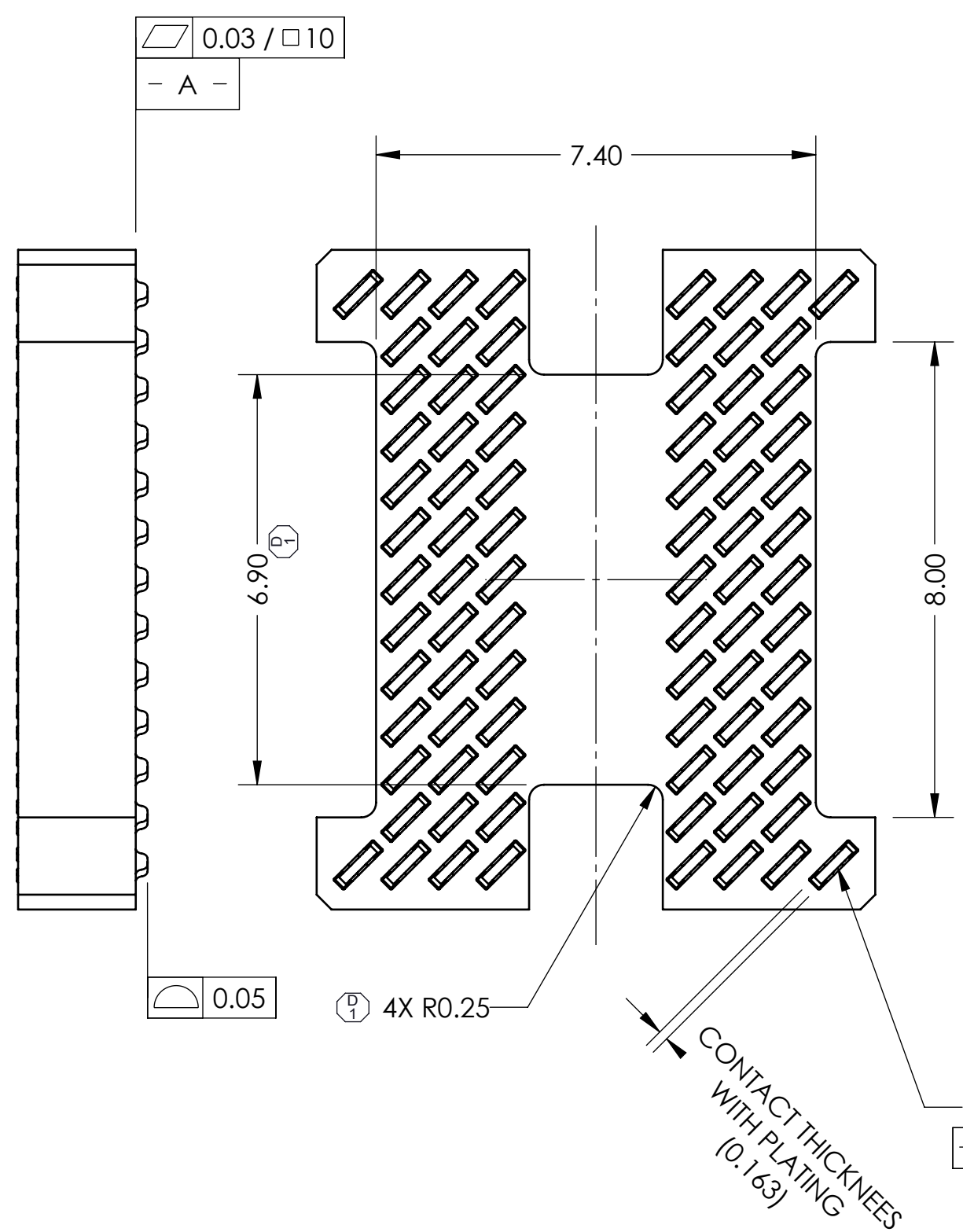
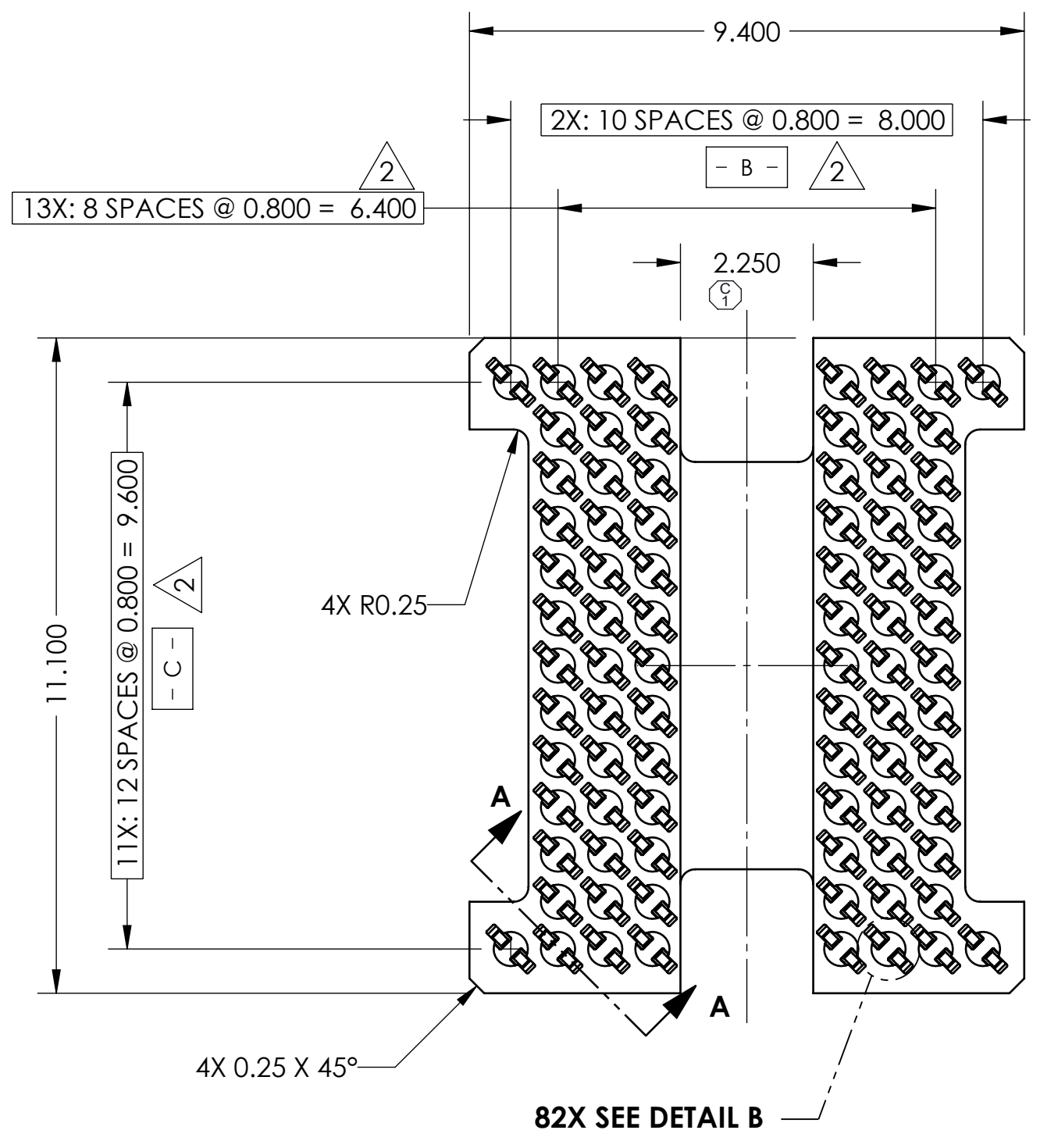
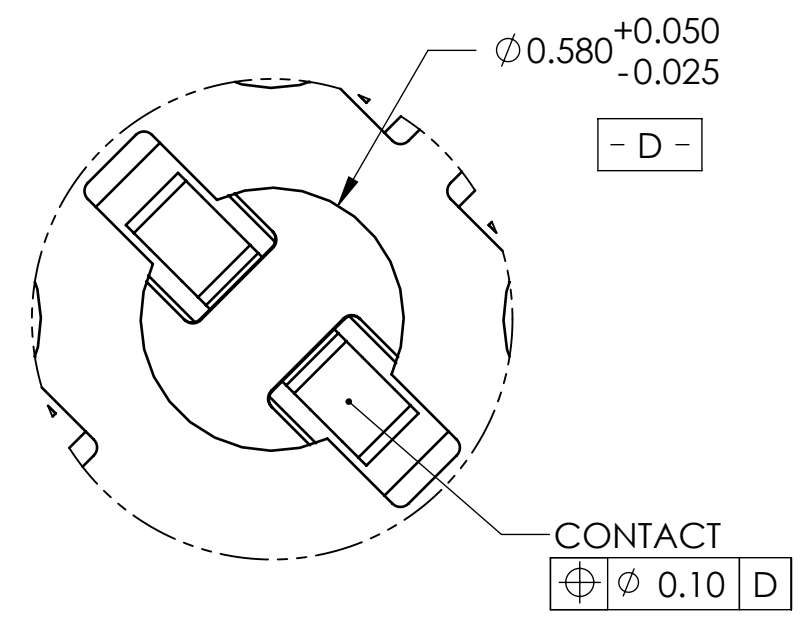
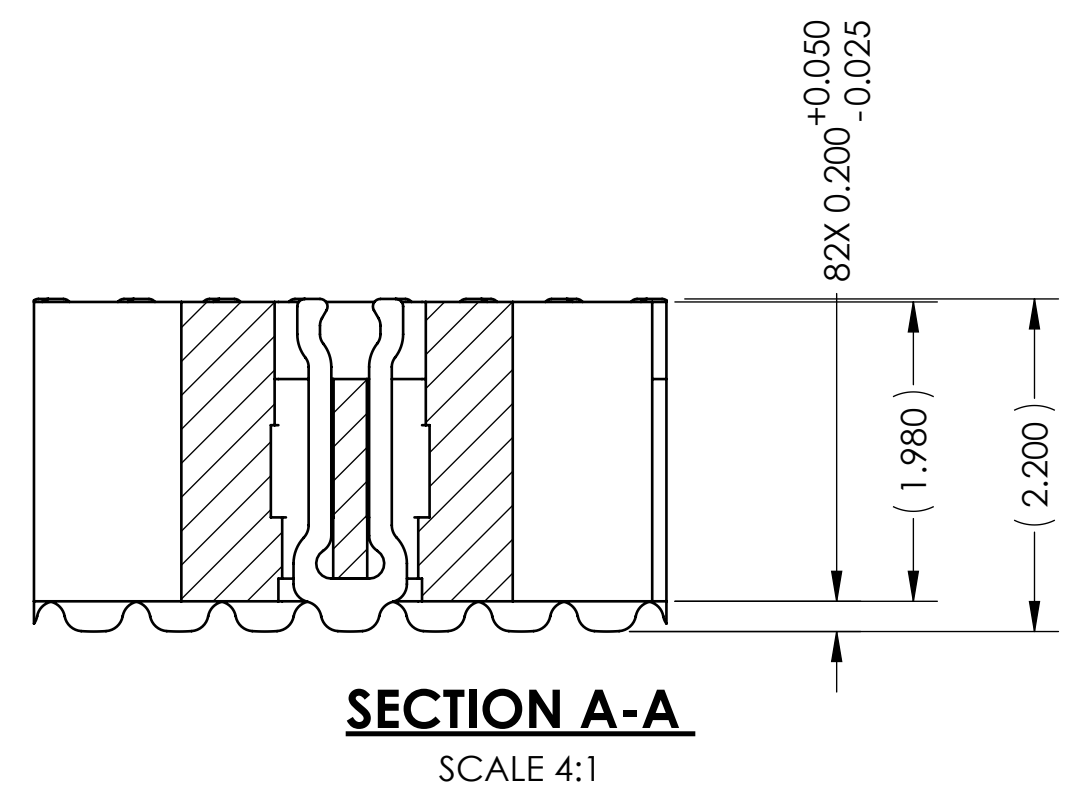
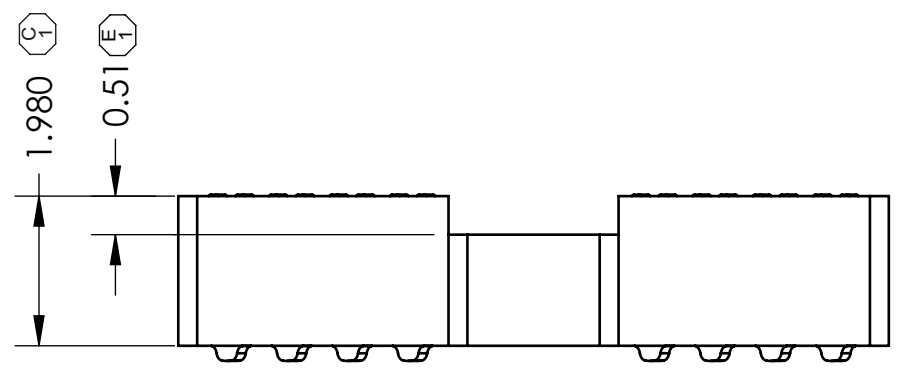


REV	ECO	BY	DESCRIPTION	APV	DATE
A		KP	Initial Design	MP	05/07/09
B		KP	Panelize part, and update T B	MP	08/25/09
C	30429	EJT	Added under mold relief opening	MP	06/21/10
D	30668	MP	Added end cut-outs	MP	01/11/11
E	30901	SK	1) Added dim	KW	09/20/11
F	30964	SK	1) Removed GD&T from A-A	KW	12/06/11



- Notes:
- Footprint part number is 104311-0143
 - Dimension locates center of contact.
 - Press size: 9.4 x 11.1.
 - Datum B and C determined by $\phi 0.580$ opening in corner slots.
 - Unless otherwise noted, all features located $\phi 0.10$ A B C



PARTS LIST	
Part Number	Description
105526-0056	SOCKET, 82GRY9.4X11.1-0.80
105528-0056	CS, 82GRY9.4X11.1-0.80
103864-0088	PRESS, DEV INS, 9.4X11.1 (SOLD SEP.)
104553-0129	STEN,FLEX, 82GRY9.4X11.1-0.80 (SOLD SEP.)

UNLESS OTHERWISE SPECIFIED - DIMENSIONS ARE IN MILLIMETERS - DIMS APPLY AFTER PLATING - TOLERANCES UNLESS OTHERWISE NOTED:

ANGLES: ±1° DECIMALS: X.X ±0.25, X.XX ±0.10, X.XXX ±0.050

LEGEND:
 (X) NOTE CALLOUT
 (1) REVISION CHANGE
 (X) ITEM NUMBER

THE INFORMATION CONTAINED IN THIS DRAWING IS THE SOLE PROPERTY OF IRONWOOD ELECTRONICS INC. ANY REPRODUCTION IN PART OR WHOLE WITHOUT THE WRITTEN PERMISSION OF IRONWOOD ELECTRONICS INC. IS PROHIBITED.

CAD GENERATED DRAWING DO NOT MANUALLY UPDATE

DRAWING APPROVALS

NAME	DATE
K. Pitney	11/28/2019
M. Peery	05/07/09

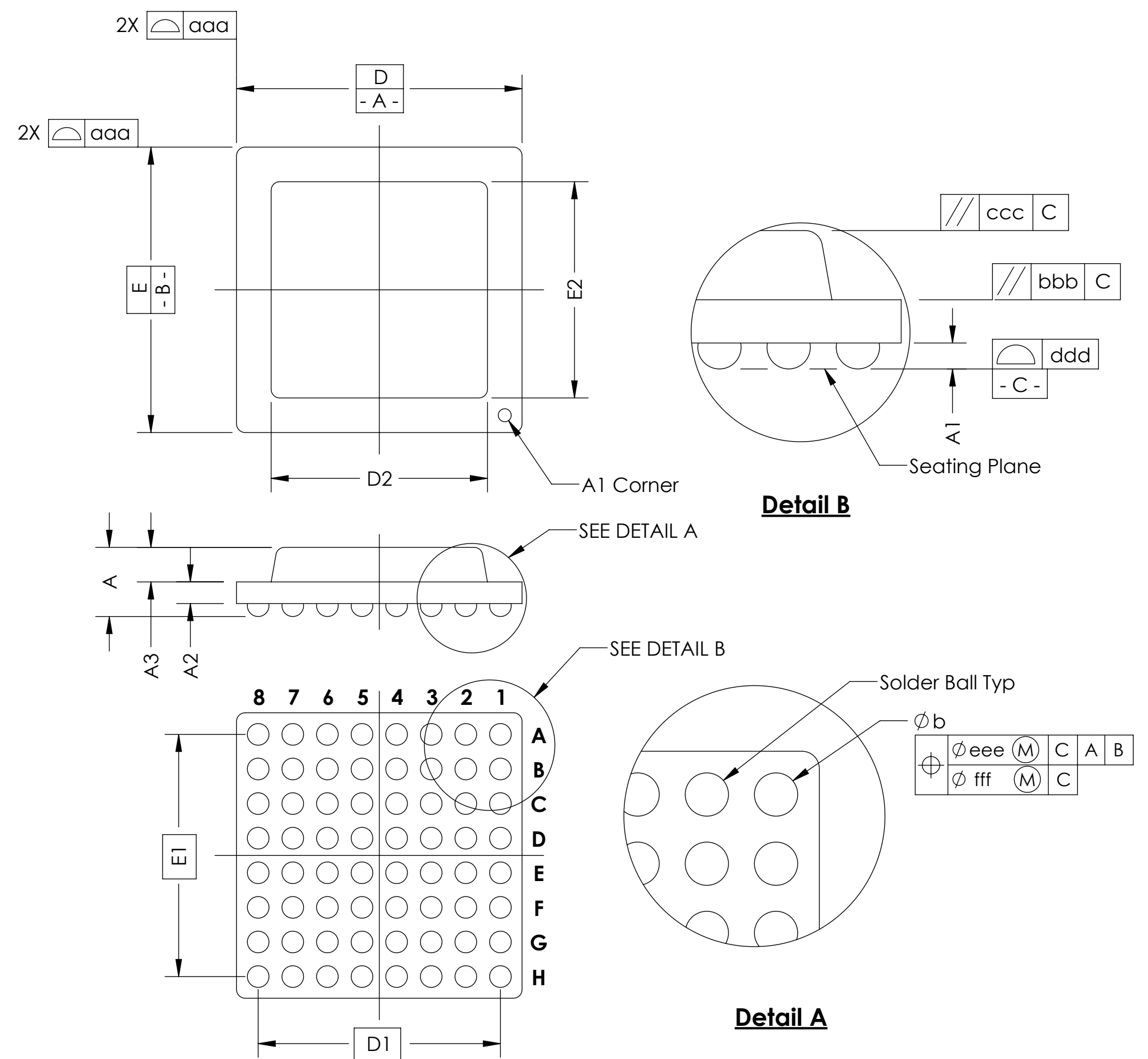
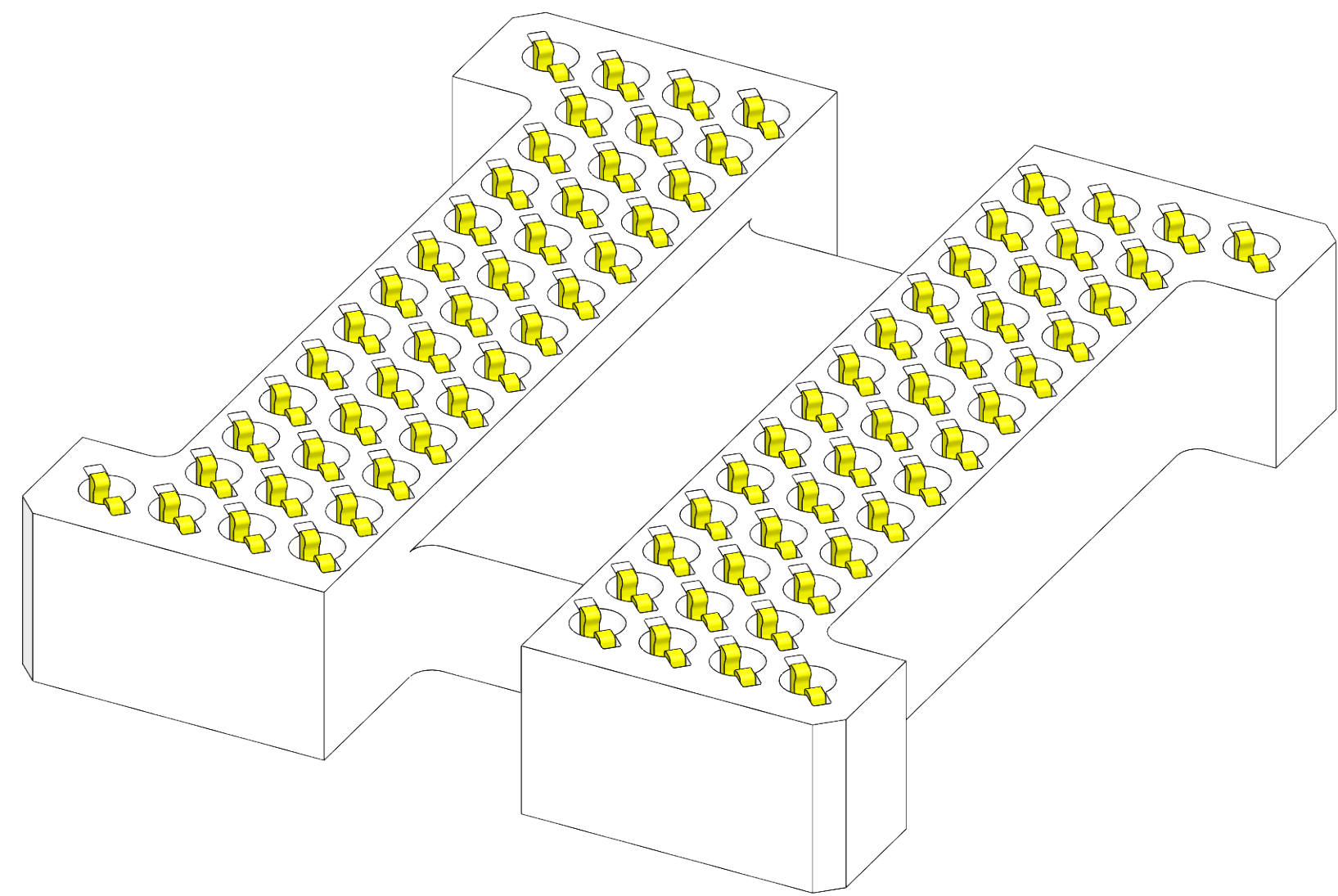
THIRD ANGLE PROJECTION

1335 EAGANDALE COURT
 EAGAN, MN 55121
 952-229-8200

SOCKET, 82GRY9.4X11.1-0.80

SIZE: C	CAD FORMAT: SOLIDWORKS	DRAWING NO.: 105526-0056	REV.: F
SCALE:	MATERIAL: SEE BOM	SHEET: 1 of 2	

SOCKET FOR DEVICES THAT ARE WITHIN THESE SPECIFICATIONS					
Lead Count	N	82	Package Size	D	9.40
Columns	ND	11	Ball Spacing	E	11.10
Rows	NE	13		D1	8.00
Pitch	e	0.80	Encapsulant/ Top Size	E1	9.60
Ball Size	b	0.45±0.05		D2	n/a
Total Thickness	A	N/A	Pattern Style	E2	n/a
Ball Height	A1	0.275 Min		Irregular*	
Substrate Thickness	A2	N/A	Perimeter Rows	n/a	
Top Thickness	A3		Center Array	n/a	
Form Tolerances					
Edge	aaa	0.20	Bottom	ddd	0.15
Substrate	bbb	0.20	Position	eee	0.20
Top	ccc	0.20	Position	fff	0.08
All dimensions are in millimeters. *See footprint specification for pattern details.					



Generic Representation with Full Grid Array

THE INFORMATION CONTAINED IN THIS DRAWING IS THE SOLE PROPERTY OF IRONWOOD ELECTRONICS INC. ANY REPRODUCTION IN PART OR WHOLE WITHOUT THE WRITTEN PERMISSION OF IRONWOOD ELECTRONICS INC. IS PROHIBITED.

UNLESS OTHERWISE SPECIFIED
- DIMENSIONS ARE IN MILLIMETERS
- DIMS APPLY AFTER PLATING
TOLERANCES UNLESS OTHERWISE NOTED: DECIMALS
ANGLES X.X ±0.25
±1° X.XX ±0.10
X.XXX ±0.050

LEGEND:
X NOTE CALLOUT
Ø1 REVISION CHANGE
X ITEM NUMBER

1335 EAGANDALE COURT
EAGAN, MN 55121
952-229-8200

SOCKET, 82GRY9.4X11.1-0.80

SIZE: C CAD FORMAT: SOLIDWORKS DRAWING NO.: **105526-0056** REV.: **F**

SCALE: See Page 1 MATERIAL: SHEET: 2 of 2